



1 Queenwood Mews, Broughton

Myddelton & Major





1 Queenwood Mews, Queenwood Road,
Broughton, Stockbridge, Hampshire, SO20 8BP

- Kitchen/ Breakfast Room
- Sitting Room with wood-burner
- Main Bedroom with Ensuite
- Two Further Bedrooms
- Family Bathroom
- Cloakroom
- Airing Cupboard
- Garage with Utility Area
- Off Road Parking
- Courtyard Garden

The Property

A linked mews house constructed of Michelmersh brick under a traditional slate roof, built in 2007 and situated within the centre of the village.

The property is well appointed throughout. A spacious hallway leads into the sitting room with wood-burner. French doors open into the kitchen/breakfast room which includes fitted units, granite worktops and integrated appliances. Doors open onto the paved terrace. There is a cloakroom and an understairs cupboard.

On the first floor is the main bedroom with a large ensuite with bath and shower overhead. Bedroom two is spacious and boasts natural light. Bedroom three also suits as a study. All of the bedrooms include floor to ceiling fitted wardrobes. The family bathroom is modern in design and includes a large walk in shower.

Outside

The front garden is laid to lawn with established borders. There is an open porch and direct access from the drive into the garage. The garage includes a utility area, an oil fired boiler with light and power. There is also access directly into the rear courtyard.

To the rear is an enclosed courtyard with steps leading to a raised area providing ample space to entertain during the warmer months. The raised borders are densely populated with shrubs and perennials creating a cottage garden.

A mews style house situated in the heart of Broughton enjoying local amenities and a vibrant community.

Tenure: Freehold Size: 1,407 ft² EPC Rating: D (67) Council Tax Band: D



Services - Mains Water & Drainage, Mains Electricity, Oil fired central heating.

Stockbridge 5 Miles • Salisbury 13 Miles • Winchester 14 Miles • Romsey 9 Miles





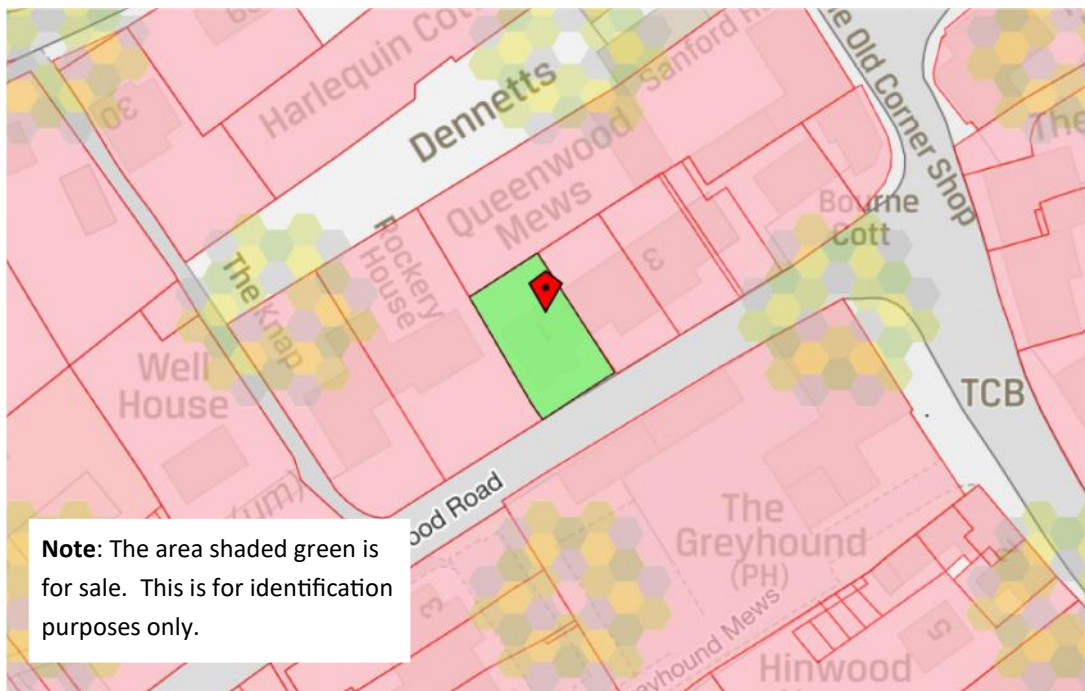
Location

1 Queenwood Mews is located in the heart of the popular village of Broughton. Broughton has an excellent community run village shop, Church, Doctors Surgery and Pub.

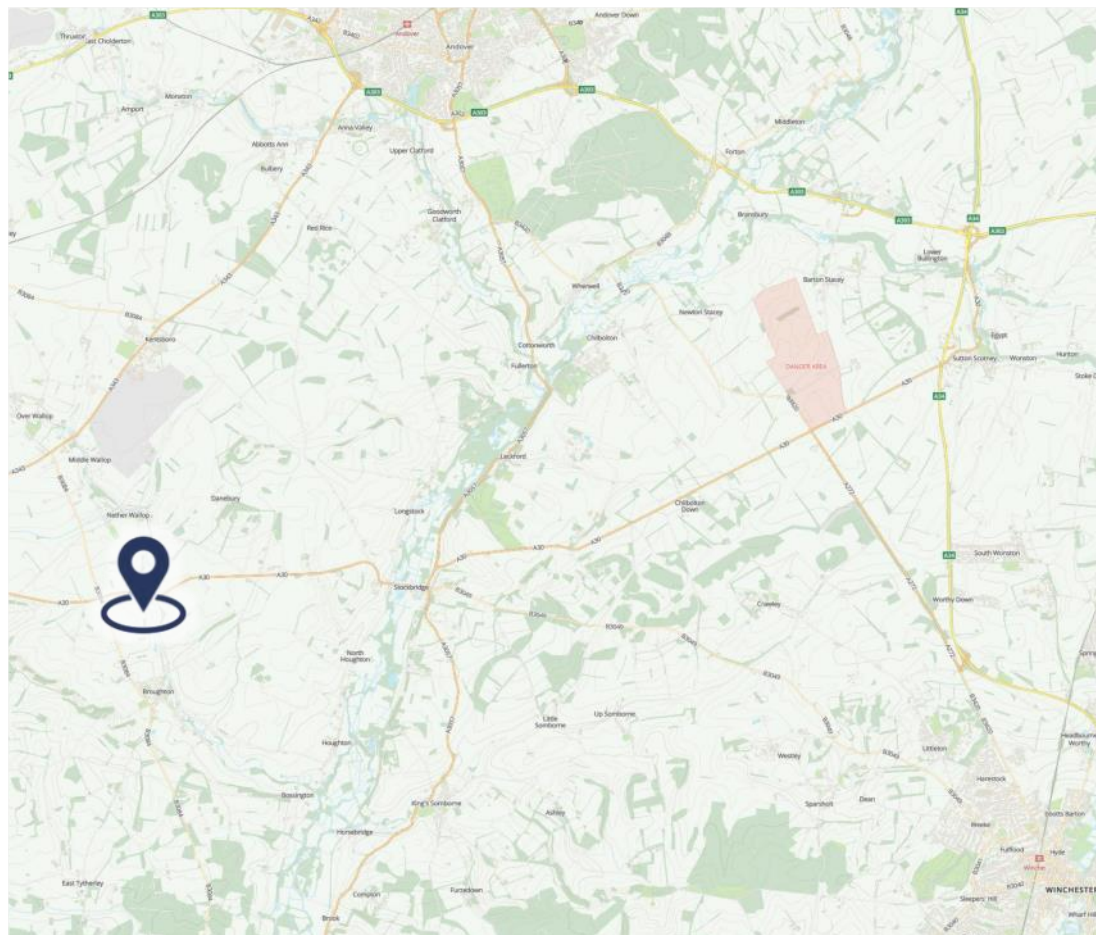
Stockbridge town is just 10 minutes drive away with independent boutiques, cafes, pubs and restaurants.

Andover is over 10 miles away, providing extensive shopping and leisure amenities.

Grateley Station is 10 minutes drive with trains to London Waterloo in 1 hour 20 minutes and Westbound. The Cathedral cities of Salisbury and Winchester are also just under 30 minutes drive from the property.



Note: The area shaded green is for sale. This is for identification purposes only.

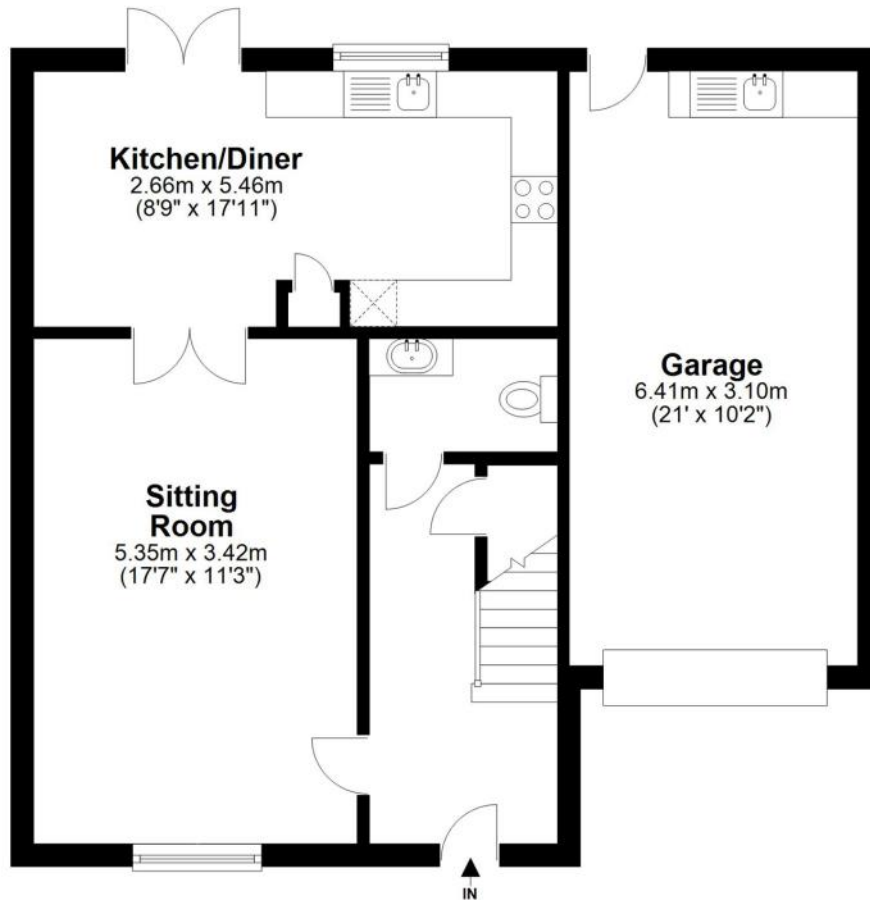




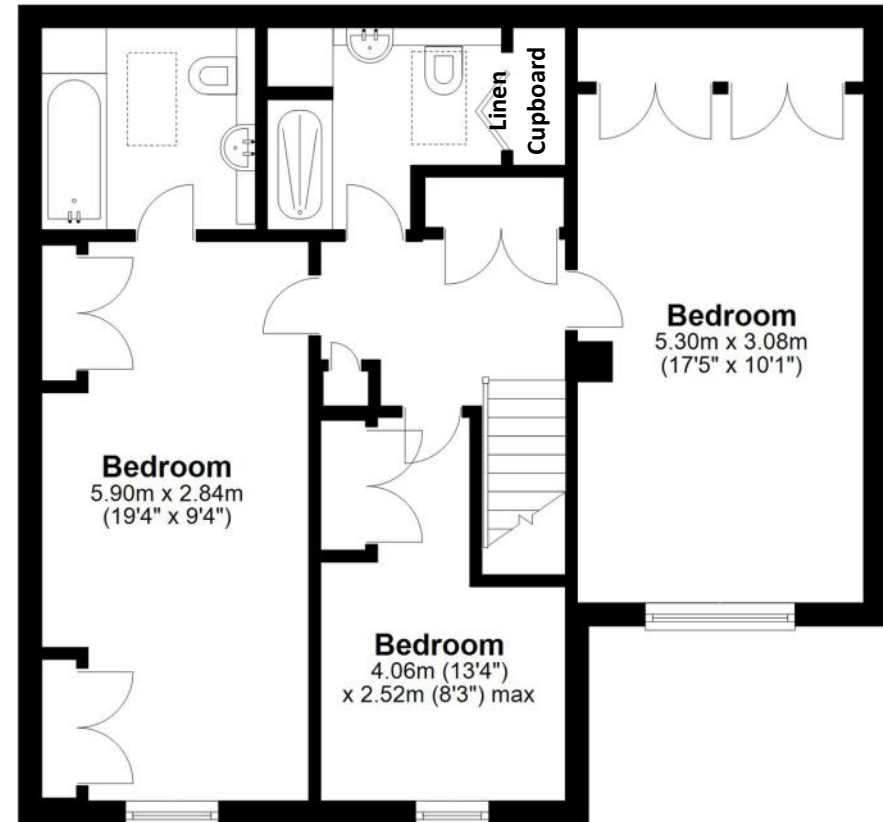
Floorplan - 1 Queenwood Mews, Broughton



Ground Floor



First Floor



Total area: approx. 130.8 sq. metres (1407.4 sq. feet)

FOR EXCLUSIVE USE BY MYDDELTON MAJOR ESTATE AGENTS
Plan for illustration only. Windows and doors are approximate. Whilst care is taken preparing this plan, please check details before making decisions reliant upon them. Measured and drawn to RICS guidelines
COPYRIGHT CLEARPLANZ



Disclaimer Notice

Myddelton & Major and their clients give notice that: i) they have no authority to make or give any representations or warranties in relation to the property, ii) these particulars do not form part of any offer or contract and must not be relied upon as statements or representations of fact, iii) any areas, measurements or distances are approximate. The text, photographs and plans are for guidance only and are not necessarily comprehensive. It should not be assumed that the property has all the necessary planning, Building Regulation or other consents, and, any services, equipment or facilities have not been tested by the agent, iv) the purchaser must satisfy themselves by inspection or otherwise.



The Old Police House, High Street, Stockbridge, Hampshire, SO20 6HE
01264 810 400 stockbridgeresidential@myddeltonmajor.co.uk
www.myddeltonmajor.co.uk

Myddelton & Major