

# RUNWAY



Aldgate East

# EAST

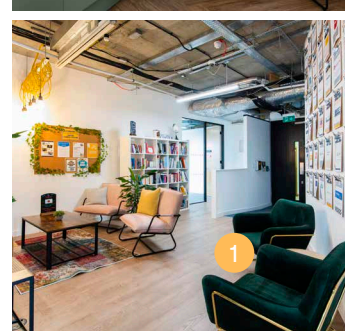
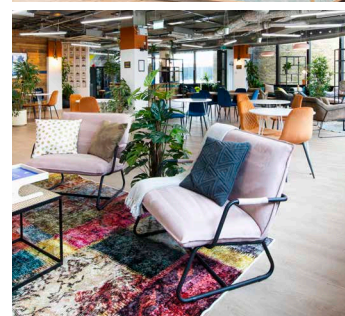
# HI THERE.

## Great teams deserve a happy home.

We create standout spaces for outstanding companies.

We change the way you work into a joyful experience. Leaders grow their companies at Runway East because their employees come to work happy. And happy teams work better.

Our community has grown with us, with thousands of members changing the world, scaling their businesses and raising over £1 billion. We're here to help you do good work, with good people. And to have fun.







# WHAT WE DO



## Happy teams

It's our mantra. From relaxing in our cafe spaces to bouncing off the energy of other like-minded entrepreneurs, we're the perfect place for ambitious founders and teams.



## Super-flexible

Not sure where your business will be in 3 years time? 12 month (or less) contracts priced by the desk make it easier to scale up your workspace. Perfect for an uncertain future.



## No hassle

We take care of the hassle so you don't have to. All our offices come fully furnished and serviced. Printer not working? Don't worry, that's our problem.



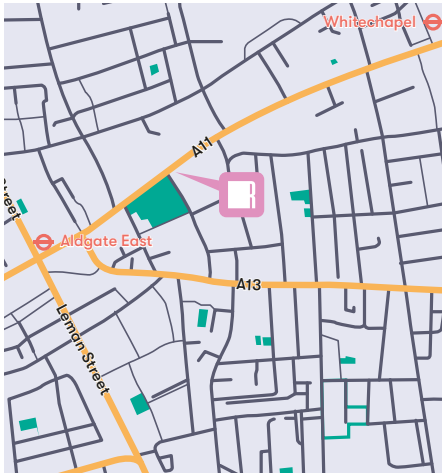
## Sustainable

From energy and waste to suppliers and construction, we're determined to play our part in making our buildings as planet-friendly as possible.





# WHERE WE ARE



A stone's throw from Brick Lane and Spitalfields Market, you'll have some of the best food and coolest bars on your doorstep.

And with the Elizabeth Line open, it's never been easier to get around.



# WHAT'S HERE



**On-site cafe and bar**  
Perfect for relaxing, networking and collaborating



**Courtyard**  
Enjoy over 5,000 sq ft of space to relax or have a casual meeting



**Easy transport**  
Just two minutes from Aldgate East station



**On-site showers**  
Ideal for commuters (and people that like showering)



**Bike storage**  
Have a bike? You'll love being able to put it somewhere



**Meeting rooms**  
Access communal meeting rooms and phone booths



**Great breakout space**  
Take advantage of relaxing and inspiring breakout space



**Fully furnished**  
Fully furnished with industry standard desks and ergonomic chairs



**Super-fast WiFi**  
Blazingly fast WiFi throughout with options for dedicated lines



**On-site community team**  
To take care of any hassles and to organise amazing events and fun



**Fully serviced**  
Including cleaning, printing and all other utilities



# MEMBERSHIPS

## All memberships include:

- Access to our member-only digital community
- A member digital toolkit with offers and discounts
- Social events
- Workshops, lunch & learns, and networking events



From  
**£390**  
pp per month

## Private Office

A lockable, private office

- 👥 Suitable for teams of up to 29
- 🛋 Fully serviced
- 🪑 Fully furnished with desks and chairs
- 🎁 All membership perks included
- 📄 Flexible agreements
- ⚙ Customisation available



Price dependant  
on requirements

## Private Office Plus

Enhanced customisation options

- 👥 Suitable for larger teams
- 🛋 Fully serviced
- 🪑 Fully furnished with desks and chairs
- 🎁 All membership perks included
- 📄 Flexible agreements
- ⚙ Advanced customisation options



From  
**£390**  
pp per month

## Dedicated Desk

A fixed desk in a shared office

- 👤 Individuals and small teams
- 🛋 Fully serviced
- 🪑 Fully furnished with desks and chairs
- 🎁 All membership perks included
- 📄 Flexible agreements

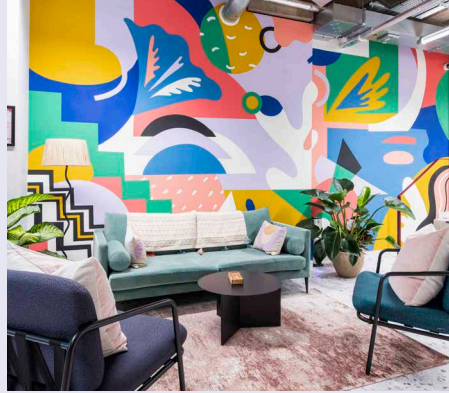


# HIGHLIGHTS



## NATURAL LIGHT

Enjoy the (rare British) sun on your face as you glance up and enjoy views of Altab Ali Park (formerly St Mary's Park) next door.



## SLEEK DESIGN

In the high-tech Hickman setting, our spaces are designed to make your life easier and your teams happy — plus they look really great.







# CUSTOMISE YOUR OFFICE

From simple logos to custom murals, we've seen – and done – it all. We want your office to feel like your home.

- Lockers
- Plants
- Tech
- Branding
- Fridges
- Painting
- Furniture
- Tea Points
- Meeting Rooms
- Call Booths

Talk to our membership team about customisation options for your space.



# WORD ON THE STREET

We've been trusted as a home to thousands of incredible members over the last 7 years.

500 startups



...and here's what they say:

"There's just something about the place that just feels right."

Duncan Cheatle  
CEO & Co-Founder  
Learn AMP



"It generally makes coming into work that little bit more fun."

SR2



"The staff are incredibly supportive, they're so friendly."

PerformanceIN



"We couldn't recommend Runway East more."

Michael Langguth  
Co-Founder and COO  
POQ



"Really pleased that we moved here. Highly recommended."

Kate Boulton  
General Manager  
Unbound



"We couldn't be happier with our choice."

Marcus Exall  
Director  
Monese



"The most social place I've ever worked."

Paul Wiseall  
Co-Founder  
Death.io



"Runway massively amplifies your company culture."

Tom Woollard  
CEO & Co-Founder  
Bunk



"Runway East is our spiritual (and actual) home."

Joe Cripps  
Managing Director  
Trail



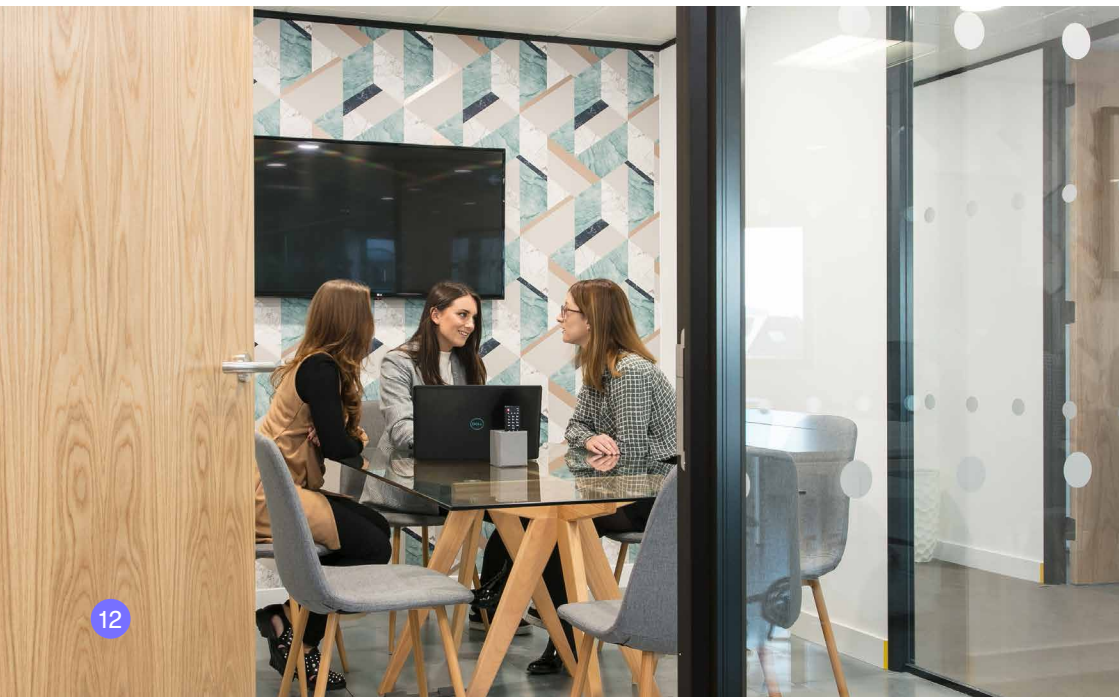
"It's completely revolutionised our business. It's given us the room to grow. It's all been such an incredible experience."

Tom  
Director  
Lumenate



"Runway East is the best place to scale a business."

Gareth Williams  
Founder  
YellowDog





# FAQS

## The Building

### Can Runway East accommodate technical requests like on-site servers?

Yes, Runway East can accommodate a wide variety of technical requests including secure on-site servers, though there may be additional fees.

### How many other people will be in the building?

There will be over 300 members in our spaces.

### Do you host events?

Yes, we host a wide variety of regular professional and social events.

### Am I allowed as many people as I want in my office?

Each office comes with a capacity restriction, sadly. But you're welcome to have as many guests in as you like.

## Your Membership

### How flexible are the length of the agreements and notice periods?

Standard pricing for private offices is based on 12-month minimum term. We offer lots of flexible options on longer terms, too.

### Are there any hidden fees we should be aware of?

All options come fully furnished with desks and chairs and fully serviced; all broadband, utilities, printing, tea, coffee, water etc are included in your price. The only additional fees would be if you requested that we customised your office with break out furniture, branding etc, or if you went over the very generous meeting room coins.

### What are the membership criteria?

Any business can join, but we do make sure that they're aligned with the casual and relaxed atmosphere of our sites. Very formal, quiet businesses may not find us best suited to their needs!

## The Area

### How easy will it be for my team to get to work?

We're a 2-minute walk from Aldgate East station and less than 10 minutes from Whitechapel — a handy stop on the new Elizabeth Line. So very easy we'd say!

### Where can I keep fit?

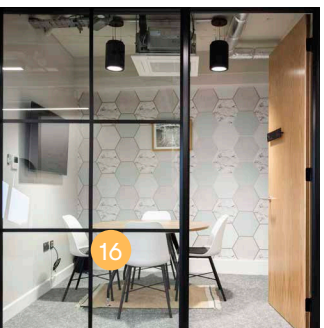
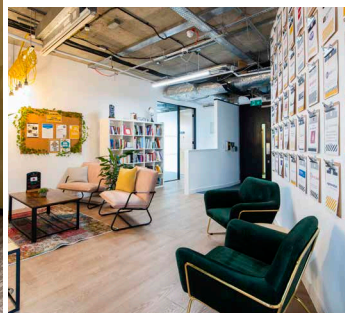
You can find PureGym and CrossFit within a 5-minute walk of the building.

### And how about places nearby for team outings?

You're half a mile from Spitalfields Market and Brick Lane — so let's be honest, you're spoilt for choice. But if you're looking for a fancy meal, Townsend is a great shout across the road to treat the team.

### Any recommendations for client meetings?

We have many meeting rooms on site in all sizes. But if it's a client lunch you're after, then Circle & Slice across the road offers some of the best sourdough pizza we've ever had.

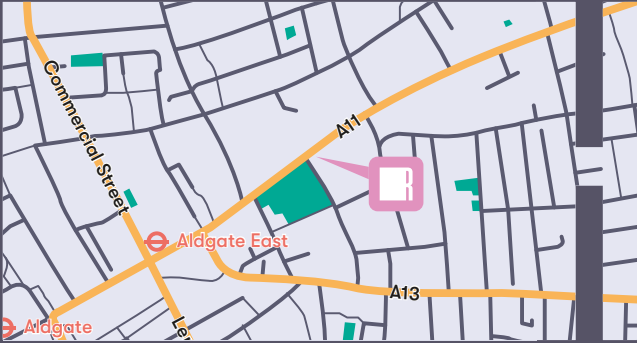


**THANKS  
FOR  
READING.**



# WE'RE

2 Whitechapel Rd  
London  
E1 1EW



# HERE

✉ [membership@runwayea.st](mailto:membership@runwayea.st)

☎ 020 3137 9953

📷 [runway\\_east](#)

📍 [runway-east](#)

**RUNWAY**  
**EAST**

[runwayea.st](http://runwayea.st)