

RUNWAY



London Bridge

EAST

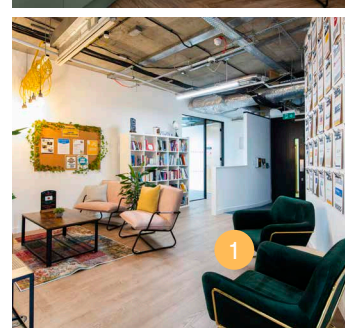
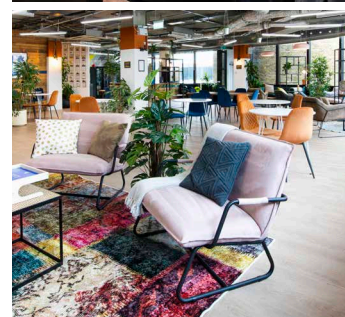
HI THERE.

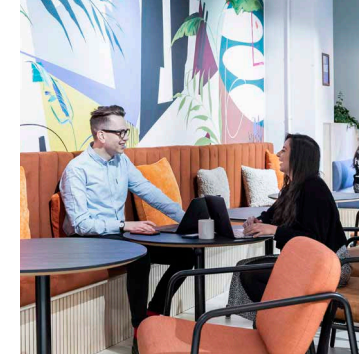
Great teams deserve a happy home.

We create standout spaces for outstanding companies.

We change the way you work into a joyful experience. Leaders grow their companies at Runway East because their employees come to work happy. And happy teams work better.

Our community has grown with us, with thousands of members changing the world, scaling their businesses and raising over £1 billion. We're here to help you do good work, with good people. And to have fun.





WHAT WE DO



Happy teams

It's our mantra. From relaxing in our cafe spaces to bouncing off the energy of other like-minded entrepreneurs, we're the perfect place for ambitious founders and teams.



Super-flexible

Not sure where your business will be in 3 years time? 12 month (or less) contracts priced by the desk make it easier to scale up your workspace. Perfect for an uncertain future.



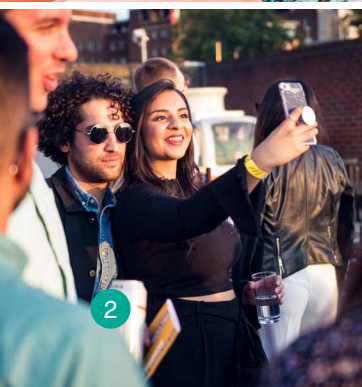
No hassle

We take care of the hassle so you don't have to. All our offices come fully furnished and serviced. Printer not working? Don't worry, that's our problem.



Sustainable

From energy and waste to suppliers and construction, we're determined to play our part in making our buildings as planet-friendly as possible.





WHERE WE ARE



With 24,000 square feet of beautiful workspace just minutes from London Bridge station, workspace doesn't get much better than this.

Designed by world-class designers and featuring a secret garden, this is a standout home for ambitious companies.



WHAT'S HERE



On-site cafe and bar
Perfect for relaxing, networking and collaboration



Secret garden
Soak up the rays in a cosy corner tucked away from the high street



Easy transport
Just two minutes from London Bridge station



On-site showers
Ideal for commuters (and people that like showering)



Bike storage
Have a bike? You'll love being able to put it somewhere



Fully furnished
Fully furnished with industry standard desks and ergonomic chairs



Fully serviced
Including cleaning, printing and all other utilities



Super-fast WiFi
Blazingly fast WiFi throughout with options for dedicated lines



Meeting rooms
Access communal meeting rooms of any size



On-site community team
To take care of any hassles and to organise amazing events and fun



24/7 access and security
Via a secure reception and security guards



Great breakout space
Take advantage of relaxing and inspiring breakout space

MEMBERSHIPS

We offer a range of plans for teams of virtually any size.



From
£610
pp per month

Private Office

A lockable, private office

- 👤 Suitable for teams of up to 29
- 🏠 Fully serviced
- 🪑 Fully furnished with desks and chairs
- 🎁 All membership perks included
- 📄 Flexible agreements
- ⚙️ Customisation available



Price dependant
on requirements

Private Office Plus

Enhanced customisation available

- 👤 Suitable for larger teams
- 🏠 Fully serviced
- 🪑 Fully furnished with desks and chairs
- 🎁 All membership perks included
- 📄 Flexible agreements
- ⚙️ Advanced customisation options



From
£510
pp per month

Dedicated Desk

A fixed desk in a shared office

- 👤 Individuals and small teams
- 🏠 Fully serviced
- 🪑 Fully furnished with desks and chairs
- 🎁 All membership perks included
- 📄 Flexible agreements

All memberships include:

- Access to our member-only digital community
- A member digital toolkit with offers and discounts
- Social events
- Workshops, lunch & learns, and networking events



HIGHLIGHTS



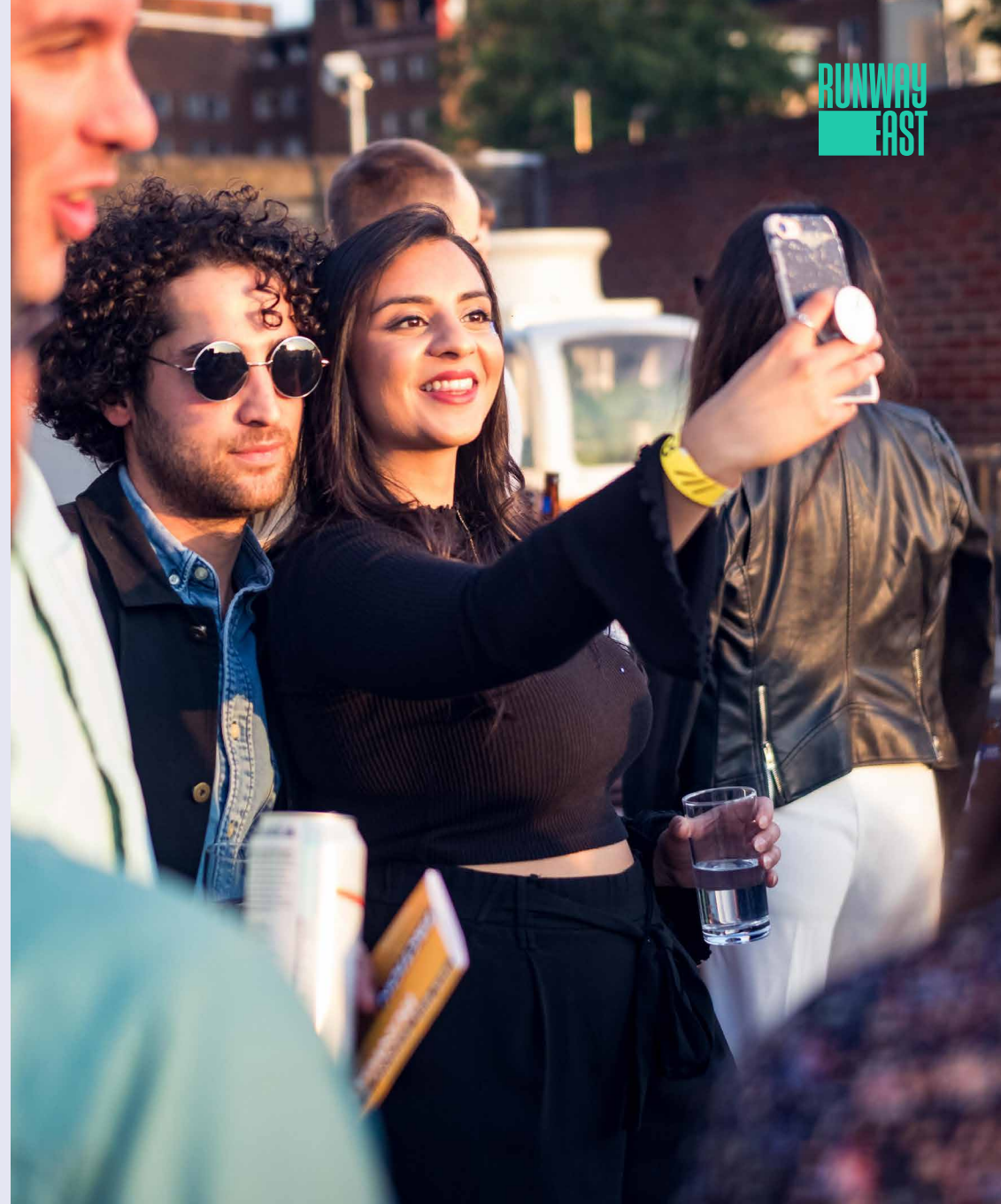
SECRET GARDEN

Soak up the vibes in a fun outside pop-up tucked away from the high street.



CAFE AND BAR

Coffee snob? People watcher? Neither? Settle in and relax at our bright and vibrant breakout space and café.



RUNWAY
EAST



CUSTOMISE YOUR OFFICE

From simple logos to custom murals, we've seen – and done – it all. We want your office to feel like your home.

- Lockers
- Plants
- Tech
- Branding
- Fridges
- Painting
- Furniture
- Tea Points
- Meeting Rooms
- Call Booths

Talk to our membership team about customisation options for your space.

WORD ON THE STREET



We've been trusted as a home to thousands of incredible members over the last 7 years.

500 startups



...and here's what they say:

"There's just something about the place that just feels right."

Duncan Cheatle
CEO & Co-Founder
Learn AMP



"It generally makes coming into work that little bit more fun."

SR2



"The staff are incredibly supportive, they're so friendly."

PerformanceIN



"We couldn't recommend Runway East more."

Michael Langguth
Co-Founder and COO
POQ



"Really pleased that we moved here. Highly recommended."

Kate Boulton
General Manager
Unbound



"We couldn't be happier with our choice."

Marcus Exall
Director
Monese



"The most social place I've ever worked."

Paul Wiseall
Co-Founder
Death.io



"Runway massively amplifies your company culture."

Tom Woollard
CEO & Co-Founder
Bunk



"Runway East is our spiritual (and actual) home."

Joe Cripps
Managing Director
Trail



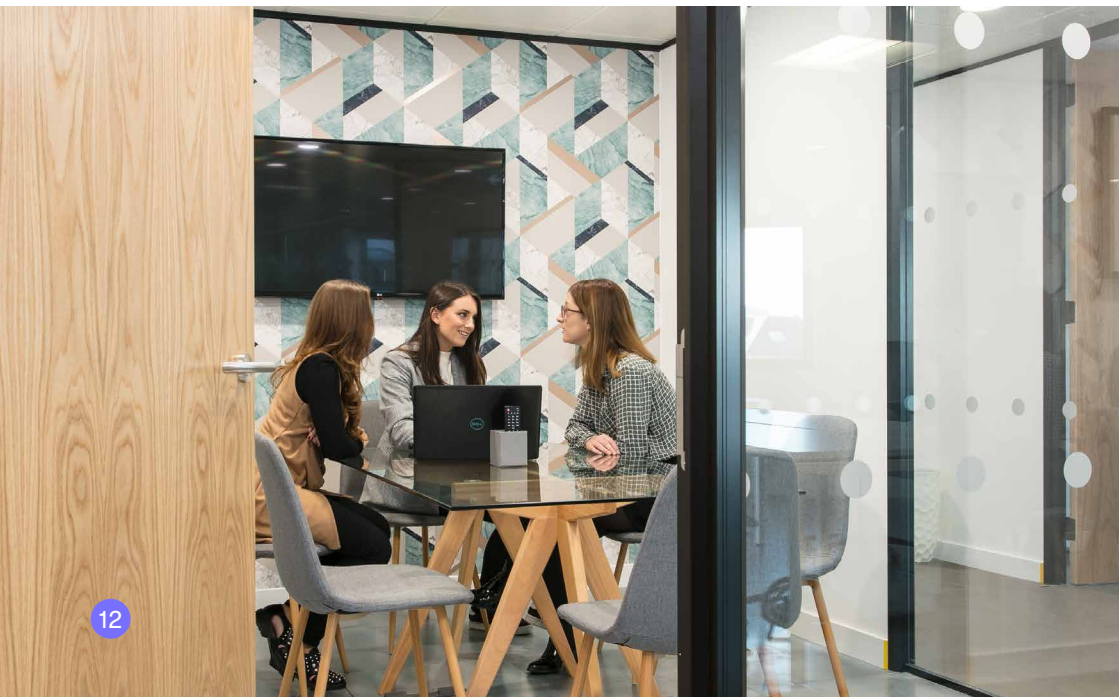
"It's completely revolutionised our business. It's given us the room to grow. It's all been such an incredible experience."

Tom
Director
Lumenate



"Runway East is the best place to scale a business."

Gareth Williams
Founder
YellowDog



FAQS

The Building

What are the opening hours?

The building is open 24 hours a day, 7 days a week.

Can Runway East accommodate technical requests like on-site servers?

Yes, Runway East can accommodate a wide variety of technical requests including secure on-site servers, though there may be additional fees.

How many other people will be in the building?

There are around 400 members across the whole building.

Do you host events?

Yes, we host a wide variety of regular professional and social events.

Am I allowed as many people as I want in my office?

Each office comes with a capacity restriction, sadly. But you're welcome to have as many guests in as you like.

Your Membership

How flexible are the length of the agreements and notice periods?

Standard pricing for private offices is based on 12-month minimum term. We offer lots of flexible options on longer terms, too.

Are there any hidden fees we should be aware of?

All options come fully furnished with desks and chairs and fully serviced; all broadband, utilities, printing, tea, coffee, water etc are included in your price. The only additional fees would be if you requested that we customised your office with break out furniture, branding etc, or if you went over the very generous meeting room coins.

What are the membership criteria?

Any business can join, but we do make sure that they're aligned with the casual and relaxed atmosphere of our sites. Very formal, quiet businesses may not find us best suited to their needs!

The Area

How easy will it be for my team to get to work?

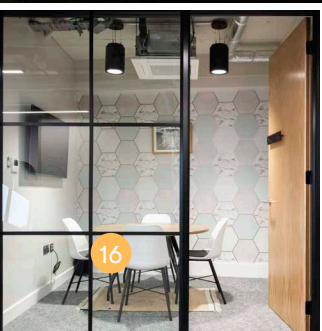
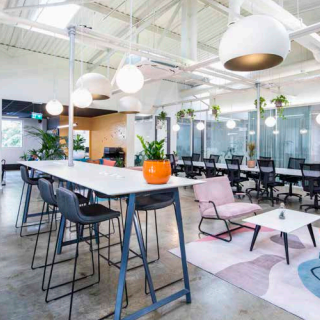
We're a 4-minute walk from London Bridge station, which means you can tube, bus, or get the national rail in. So very easy we'd say!

Where can I keep fit?

You can find Fitness First, Kings Sport, Yogashpire and Third Space all within a 5 minute walk.

And how about places nearby for team outings?

There's over 20 restaurants and pubs within a 10-minute walk. For a chilled lunch, Pizza Pilgrims is always a great shout, and if it's a small number of you then Padella is a must try. Flat Iron Square is a great hub for team gatherings too, with an outdoor terrace, street food vendors and regular events. And of course, Borough Market is round the corner.



**THANKS
FOR
READING.**

WE'RE

18 Crucifix Ln
London
SE1 3JW



HERE

✉ membership@runwayea.st

☎ 020 3137 9953

📷 [runway_east](#)

📍 [runway-east](#)

RUNWAY
EAST

runwayea.st