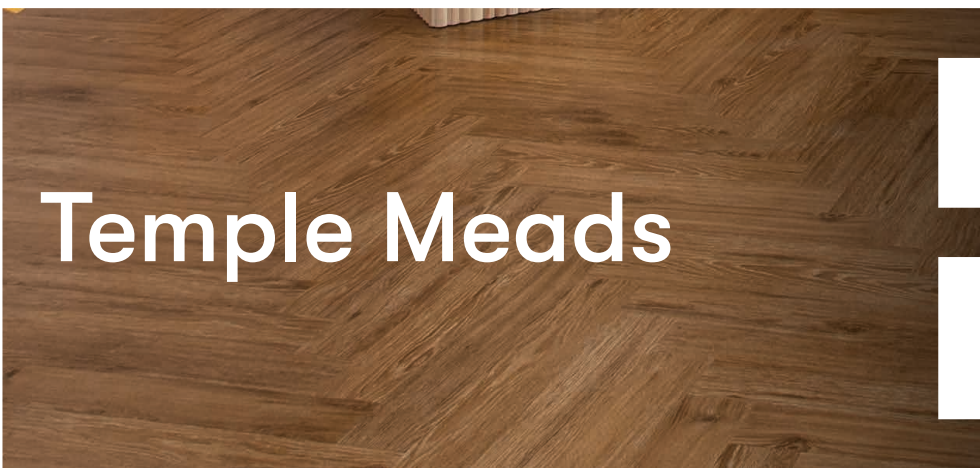
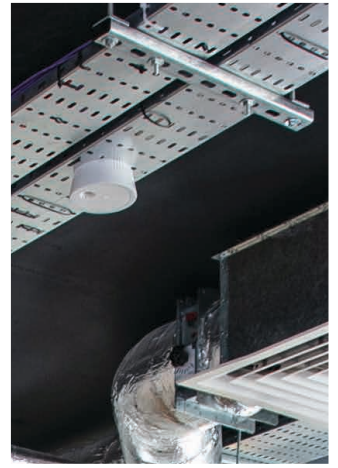


# RUNWAY



Temple Meads

# EAST

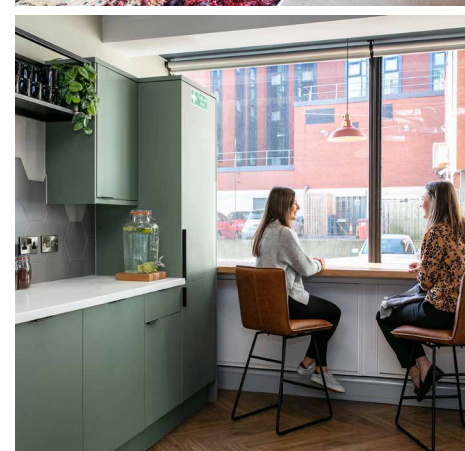
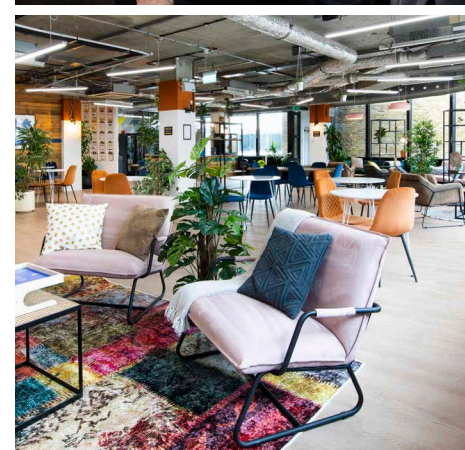
# HITHERE.

## Great teams deserve a happy home.

We create standout spaces for outstanding companies.

We change the way you work into a joyful experience. Leaders grow their companies at Runway East because their employees come to work happy. And happy teams work better.

Our community has grown with us, with thousands of members changing the world, scaling their businesses and raising over £1 billion. We're here to help you do good work, with good people. And to have fun.







# WHAT WE DO



## HAPPY TEAMS

It's our mantra. From relaxing in our cafe spaces to bouncing off the energy of other like-minded entrepreneurs, we're the perfect place for ambitious founders, teams and freelancers.



## SUPER-FLEXIBLE

Not sure where your business will be in 3 years time? 12 month (or less) contracts priced by the desk make it easier to scale up and down your workspace. Perfect for an uncertain future.



## NO HASSLE

We take care of the hassle so you don't have to. All our offices come fully furnished and serviced.



## TRANSPARENCY

As a member, you get everything from great coffee, drinks and cake to networking and famous events hosted by our community team.





# WHERE WE ARE



Our second site in Bristol is – as you’d expect – minutes away from the station, which makes it a perfect space for teams that need great transport links.

With thoughtful design touches throughout, our Temple Meads location is home to rapidly scaling businesses from across Bristol and beyond.

# WHAT'S HERE



**On-site community team**  
To take care of any hassles and to organise amazing events and fun



**Fully-serviced**  
Including cleaning, printing and all other utilities



**Fully-furnished**  
Fully furnished with industry standard desks and ergonomic chairs



**On-site showers**  
Ideal for commuters (and people that like showering)



**Bike storage**  
Have a bike? You'll love being able to put it somewhere



**Access meeting rooms**  
Access 24 communal meeting rooms of any size



**Great breakout space**  
Take advantage of relaxing and inspiring breakout space



**24/7 Access and Security**  
Via a secure reception and security guards



**Super-fast WiFi**  
Blazingly fast WiFi throughout with options for dedicated lines



**Easy Transport**  
Just 10 minutes from Temple Meads Station

# MEMBERSHIPS

We offer a range of plans for teams

All memberships include:

- Access to our member-only digital community
- A member digital toolkit with offers and discounts
- Social events
- Workshops, lunch & learns, and networking events

of virtually any size.



From  
**£350.00**  
pp per month

## PRIVATE OFFICE

A lockable, private office for teams of 6-29, with customisation and branding

- 🪑 Fully-furnished with desks and ergonomic chairs
- 👤 Fully-serviced
- ★ All membership perks included
- 📄 Flexible agreements



Price dependent  
on requirements.

## PRIVATE OFFICE PLUS

A lockable, private office for 30+ teams. Fully customise your space with hundreds of options available.

- 🪑 Fully-furnished with desks and ergonomic chairs
- 👤 Fully-serviced
- ★ All membership perks included
- 📄 Flexible agreements

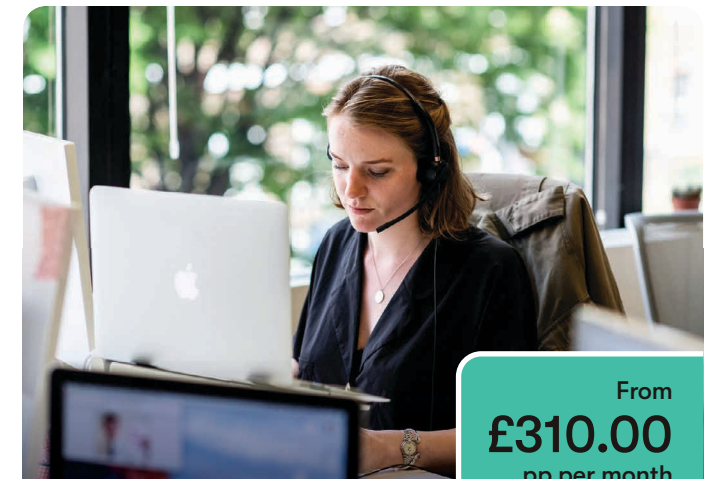


Price dependent  
on requirements.

## OFFICE SHARE

A lockable office shared on a part-time basis with another company.

- 🪑 Fully-furnished with desks and ergonomic chairs
- 👤 Fully-serviced
- ★ All membership perks included
- 📄 Flexible agreements from two months notice
- 🔒 Lockable storage for your team



From  
**£310.00**  
pp per month

## DEDICATED DESK

A fixed desk in a shared office.

- 🪑 Fully-furnished with desks and ergonomic chairs
- 👤 Fully-serviced
- ★ All membership perks included
- 📄 Flexible agreements from only 30 days' notice



# HIGHLIGHTS



## STRIKING DESIGN

Temple Meads has thoughtful, high-quality design throughout.

## GREAT TRANSPORT

Just seven minutes walk from Bristol Temple Meads and express services to London and beyond.





# WHAT'S AVAILABLE

Customise your office however you want.

## Happiness is making a home.

Every one of our offices comes fully furnished with desks and ergonomic chairs. But most of our members want to make their place feel like home.

We can help that happen.

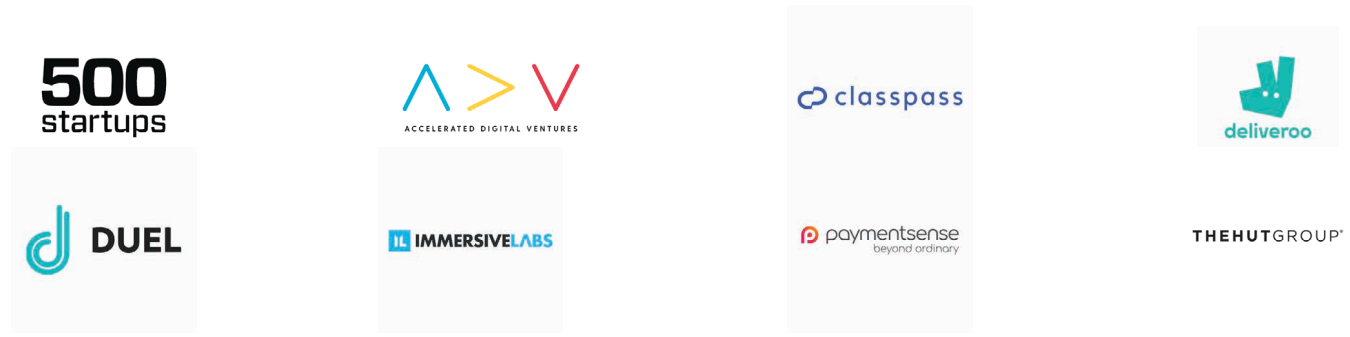
- Lockers
- Plants
- Tech
- Branding
- Fridges
- Painting
- Furniture
- Tea Points
- Meeting Rooms
- Call Booths

Want to get started?  
Just talk to our membership team about customisation options for your space.

# ABOUT OUR MEMBERS



We've been trusted as a home to thousands of incredible members over the last 7 years.



**ff** We couldn't recommend Runway East more.

Michael Langguth  
Co-Founder and COO  
POQ



**ff** Runway massively amplifies your company culture.

Tom Woollard  
CEO & Co-Founder  
Bunk



**ff** We couldn't be happier with our choice.

Marcus Exall  
Director  
Monese



**ff** Really pleased that we moved here. Highly recommended.

Kate Boulton  
General Manager  
Unbound



...and here's what they say.

**ff** Runway East is the best place to scale a business.

Gareth Williams  
Founder  
YellowDog



**ff** The most social place I've ever worked.

Paul Wiseall  
Co-Founder  
Death.io



**ff** There's just something about the place that just feels right.

Duncan Cheatle  
CEO & Co-Founder  
Learn AMP



**ff** Runway East is our spiritual (and actual) home.

Joe Cripps  
Managing Director  
Trail



...and here's some of our Google Reviews



**ff** A really lovely place to work with a great atmosphere and friendly staff.



**ff** A perfect location just a minute's walk away from the best lunch breaks in London and the best commuting connections available in this part of town.



**ff** Great atmosphere, fantastic team... it's been a real pleasure joining the community and I highly recommend!



**ff** Fantastic shared workspace...so many lovely added extras and special touches to make your working day easier.



# FAQS

## The Building

### What are the opening hours?

The building is open 24 hours a day, with secure access control and security are on site Monday - Friday 7-7.

### Can Runway East accommodate technical requests like on-site servers?

Yes, Runway East can accommodate a wide variety of technical requests including secure on-site servers, though there may be additional fees.

### How many other people will be in the building?

There's over 800 members on site across 4 floors.

### Do you host events?

Yes we host regular professional and social events. All members also get full access to the events down the road at our Bristol Bridge building, where members drinks take place every Thursday evening.

### Am I allowed as many people as I want in my office?

Each office comes with a capacity restriction, sadly. But you're welcome to have as many guests in as you like.

## Your Membership

### How flexible are the length of the agreements and notice periods?

Standard pricing for private offices is based on 12-month fixed terms, with an option to extend the contract at the end. However, we know startups need flexibility. We also offer rolling 2, 6 or 9 month notice periods on slightly different pricing - ask us for more details.

### Are there any hidden fees we should be aware of?

All options come fully furnished with desks and chairs and fully serviced; all broadband, utilities, printing, tea, coffee, water etc are included in your price. The only additional fees would be if you requested that we customised your office with break out furniture, branding etc, or if you went over the very generous meeting room coins.

### What are the membership criteria?

Any business can join, but we do make sure that they're aligned with the casual and relaxed atmosphere of our sites. Very formal, quiet businesses may not find us best suited to their needs!

### How does the meeting room system work?

Teams are assigned monthly credits for meeting rooms that are relative to their size. If you go over your allotted credits (which is rare), we charge the following: for small meeting rooms (up to 7 people) = £10/hour, and large meeting rooms (7+ people) = £20/hour.

## The Area

### How easy will it be for my team to get to work?

We're 500 metres from Bristol Temple Meads station or there are a number of buses that all stop nearby.

### Where can I keep fit?

There are gyms and yoga studios galore, all within 10-mins of our building. Starks Fitness is an 8-minute walk away, Workout Harbourside and Synergi Training Centre are a 10-minute walk away and Pacific Yoga and WildWolfsYoga offer classes like Hot Yoga and Candlelit Restorative sessions.

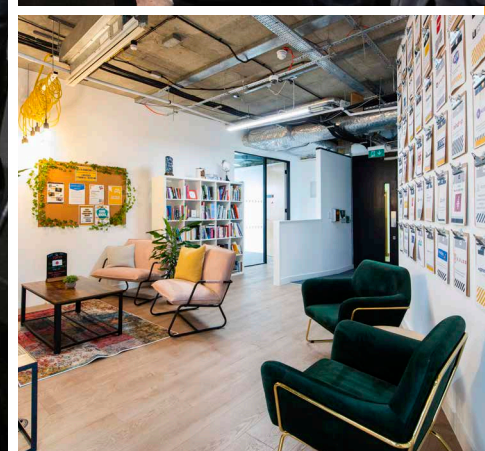
### And how about places nearby for team outings?

Well that depends what you're after. If you're in need of a fun team event, we love pizza and bowling at The Lanes, while Brewdog, The Apple and the Left-handed Giant are always good options for a drink. For an extra-special lunch, Three Brothers Burgers is a must visit, and of course Finzels Reach Market and Temple Quay Market are always a good shout.

### Any recommendations for client meetings?

Sure, did we mention we have 3000sqft of breakout space and 7 meeting rooms? Or if it's a client dinner that you had in mind, we recommend the Glassboat or Adelina Yard.



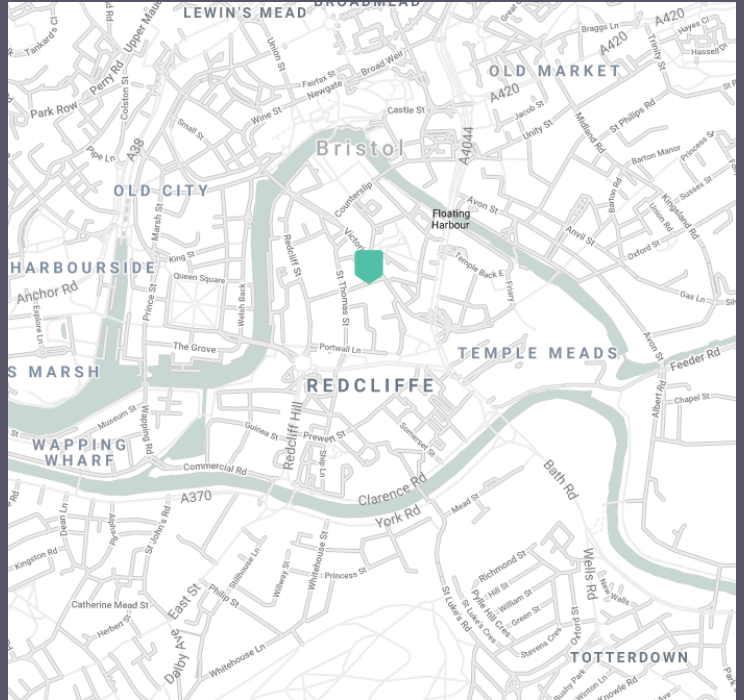


**THANKS  
FOR  
READING.**



# WE'RE HERE

101 Victoria St  
Redcliffe  
Bristol  
BS1 6PU



✉ [membership@runwayea.st](mailto:membership@runwayea.st)

☎ 020 3137 9953

📷 [runway\\_east](#)

📌 [runway-east](#)

**RUNWAY**  
**EAST**  
runwayea.st