

RUNWAY



Soho

EAST

HI THERE.

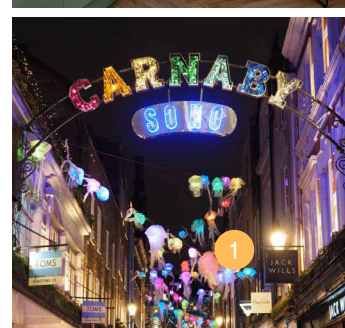
Great teams deserve a happy home.

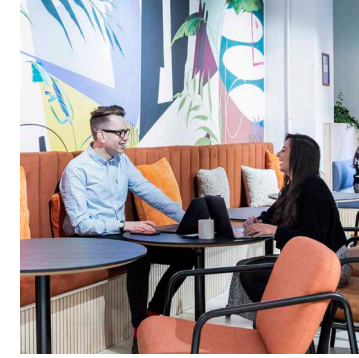
We create standout spaces for outstanding companies.

We change the way you work into a joyful experience. Leaders grow their companies at Runway East because their employees come to work happy. And happy teams work better.

Our community has grown with us, with thousands of members changing the world, scaling their businesses and raising over £1 billion. We're here to help you do good work, with good people. And to have fun.

Runway East Soho - 66 Old Compton St, London W1D 4UH





WHAT WE DO



Happy teams

It's our mantra. From relaxing in our cafe spaces to bouncing off the energy of other like-minded entrepreneurs, we're the perfect place for ambitious founders and teams.



Super-flexible

Not sure where your business will be in 3 years time? 12 month (or less) contracts priced by the desk make it easier to scale up your workspace. Perfect for an uncertain future.



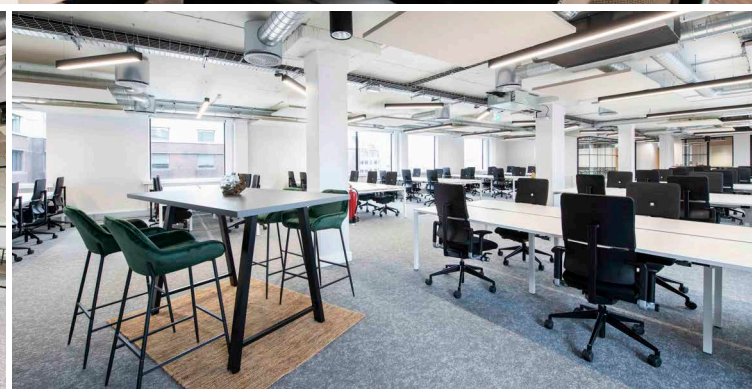
No hassle

We take care of the hassle so you don't have to. All our offices come fully furnished and serviced. Printer not working? Don't worry, that's our problem.



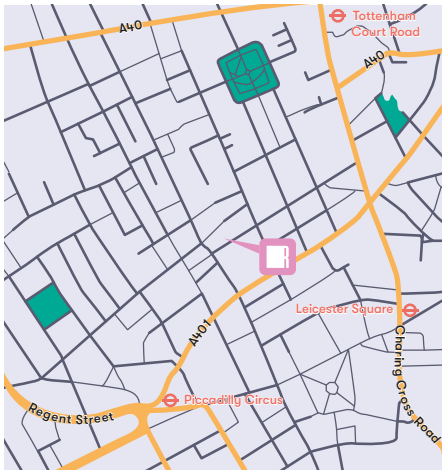
Sustainable

From energy and waste to suppliers and construction, we're determined to play our part in making our buildings as planet-friendly as possible.





WHERE WE ARE



Smack bang in the middle of Old Compton Street, our Soho location offers the space, support and connections that high-growth companies need to succeed.

WHAT'S HERE



On-site cafe and bar
Perfect for relaxing, networking and collaboration



Roof terrace
A secret roof garden in the middle of Soho



Easy transport
Just minutes for three tube stations



On-site showers
Ideal for commuters (and people that like showering)



Podcast studio
Take advantage of a high-spec podcast studio on site



Fully furnished
Fully furnished with industry standard desks and ergonomic chairs



Fully serviced
Including cleaning, printing and all other utilities



Super-fast WiFi
Blazingly fast WiFi throughout with options for dedicated lines



Meeting rooms
Access communal meeting rooms of any size



On-site community team
To take care of any hassles and to organise amazing events and fun



Bike storage
Have a bike? You'll love being able to put it somewhere



24/7 access and security
Via a secure reception and security guards



MEMBERSHIPS

We offer a range of plans for teams of virtually any size.



From
£700
pp per month

Private Office

A lockable, private office

- 👤 Suitable for teams of up to 29
- 🛠 Fully serviced
- 🪑 Fully furnished with desks and chairs
- 🎁 All membership perks included
- 📄 Flexible agreements
- ⚙ Customisation available



Price dependant
on requirements

Private Office Plus

Enhanced customisation available

- 👤 Suitable for larger teams
- 🛠 Fully serviced
- 🪑 Fully furnished with desks and chairs
- 🎁 All membership perks included
- 📄 Flexible agreements
- ⚙ Advanced customisation options



From
£400
pp per month

Dedicated Desk

A fixed desk in a shared office

- 👤 Individuals and small teams
- 🛠 Fully serviced
- 🪑 Fully furnished with desks and chairs
- 🎁 All membership perks included
- 📄 Flexible agreements

All memberships include:

- Access to our member-only digital community
- A member digital toolkit with offers and discounts
- Social events
- Workshops, lunch & learns, and networking events



HIGHLIGHTS



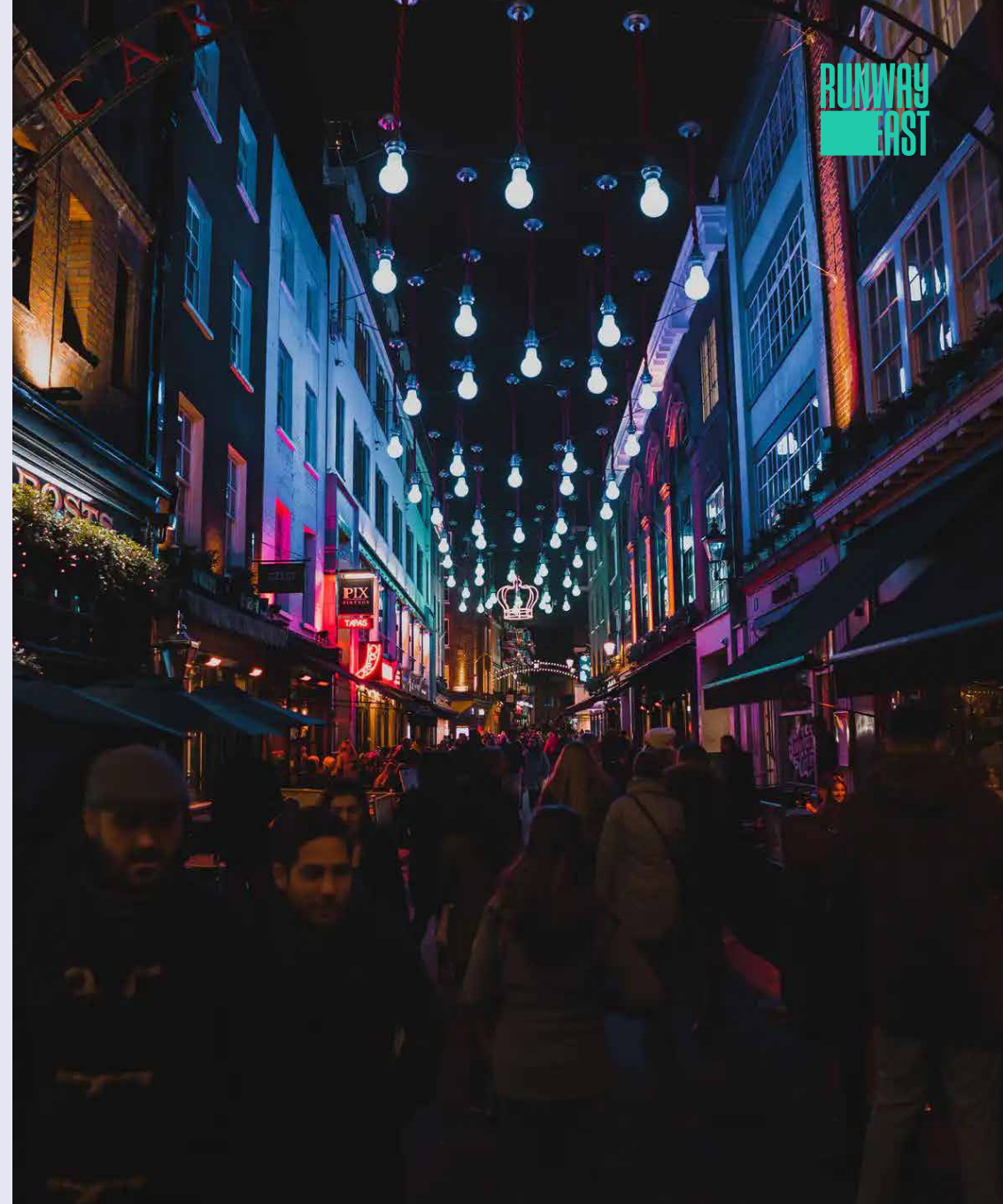
PODCAST STUDIO

A fully-functional podcast studio on site. Perfect for budding content producers.



BEAUTIFUL TERRACE

A hidden gem – a beautiful rooftop terrace right in the middle of Soho.





CUSTOMISE YOUR OFFICE

From simple logos to custom murals, we've seen – and done – it all. We want your office to feel like your home.

- Lockers
- Plants
- Tech
- Branding
- Fridges
- Painting
- Furniture
- Tea Points
- Meeting Rooms
- Call Booths



Talk to our membership team about customisation options for your space.

WORD ON THE STREET

We've been trusted as a home to thousands of incredible members over the last 7 years.

...and here's what they say:

500 startups



"There's just something about the place that just feels right."

Duncan Cheatle
CEO & Co-Founder
Learn AMP



"It generally makes coming into work that little bit more fun."

SR2



"The staff are incredibly supportive, they're so friendly."

PerformanceIN



"Really pleased that we moved here. Highly recommended."

Kate Boulton
General Manager
Unbound



"We couldn't be happier with our choice."

Marcus Exall
Director
Monese



"The most social place I've ever worked."

Paul Wiseall
Co-Founder
Death.io



"Runway massively amplifies your company culture."

Tom Woollard
CEO & Co-Founder
Bunk



"Runway East is our spiritual (and actual) home."

Joe Cripps
Managing Director
Trail



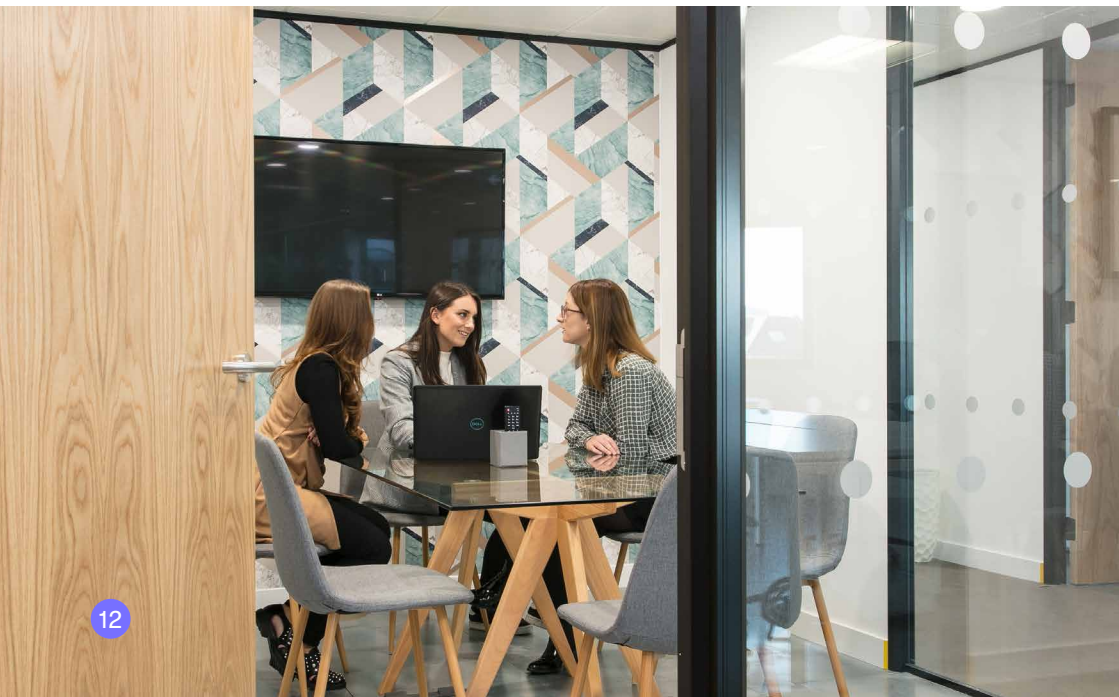
"It's completely revolutionised our business. It's given us the room to grow. It's all been such an incredible experience."

Tom
Director
Lumenate



"Runway East is the best place to scale a business."

Gareth Williams
Founder
YellowDog



FAQS

The Building

What are the opening hours?

The building is open 24 hours a day, 7 days a week.

Can Runway East accommodate technical requests like on-site servers?

Yes, Runway East can accommodate a wide variety of technical requests including secure on-site servers, though there may be additional fees.

How many other people will be in the building?

There are 250 members across the whole building.

Do you host events?

Yes, we host a wide variety of regular professional and social events.

Am I allowed as many people as I want in my office?

Each office comes with a capacity restriction, sadly. But you're welcome to have as many guests in as you like.

Your Membership

How flexible are the length of the agreements and notice periods?

Standard pricing for private offices is based on 12-month minimum term. We offer lots of flexible options on longer terms, too.

Are there any hidden fees we should be aware of?

All options come fully furnished with desks and chairs and fully serviced; all broadband, utilities, printing, tea, coffee, water etc are included in your price. The only additional fees would be if you requested that we customised your office with break out furniture, branding etc, or if you went over the very generous meeting room coins.

What are the membership criteria?

Any business can join, but we do make sure that they're aligned with the casual and relaxed atmosphere of our sites. Very formal, quiet businesses may not find us best suited to their needs!

The Area

How easy will it be for my team to get to work?

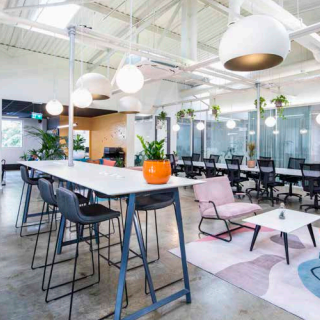
We're a mere 5-minutes walk from Picadilly Circus and Leicester Square tube stations and no more than 12 mins from major train stations (Kings Cross, Waterloo, Liverpool Street). So very easy we would say.

Where can I keep fit?

There are gyms and yoga studios galore, all within 10-mins of our building. The Third Space is a 3-minute walk away, PureGym offers you bargain memberships and HighTimes Yoga offers yoga, meditation and sounds baths. Just ask us for our full list of recommendations.

And how about places nearby for team outings?

Where to begin? It would take us pages to list the number of food and drink places nearby, but for fun events with your team, trying the Crystal Maze experience is always fun, as is Lucky Voice Karaoke. If you're looking for something a bit more cultured, we recommend 1940's cocktail bar Cahoots, or catching a play at one of many nearby theatres.



**THANKS
FOR
READING.**

WE'RE

66 Old Compton St
London
W1D 4UH



HERE

✉ membership@runwayea.st

☎ 020 3137 9953

📷 [runway_east](#)

🌐 [runway-east](#)

RUNWAY
EAST

runwayea.st