

# Hammonds



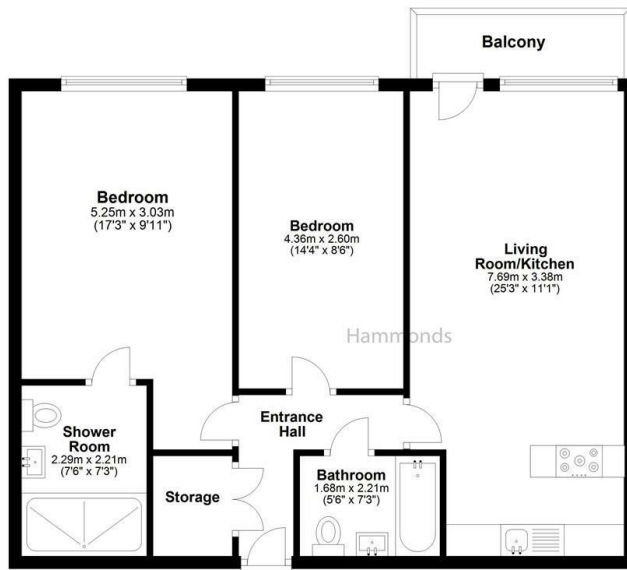
17 George Hudson Tower, High Street, London, E15 2PL

£450,000

- Lease: 984 years
- Modern Finish
- Concierge
- Service Charge: £5299.86 pa
- En-Suite Bathroom
- Gated Development
- Ground Rent: £300 pa
- Open Plan
- Gated Parking Space

57 Bow Rd, London, E3 2AD  
02089802226

sales@hammonds-estates.co.uk  
www.hammonds-estates.co.uk



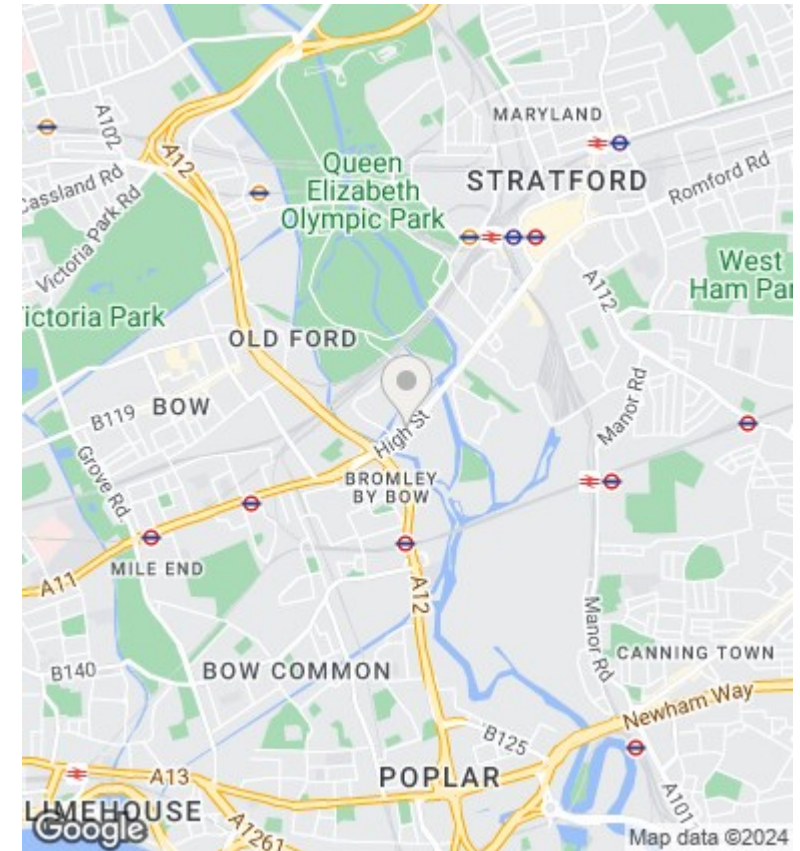
**Hammonds**

Plan produce for HAMMONDS Estate Agent

**Evolve**  
www.evolve-uk.co.uk

This floor plan is for illustrative purposes only.  
Floor areas (including total floor area) openings are approximate.

TOTAL FLOOR AREA	Sq. meters	66.0
	Sq. feet	710.6



## Directions

## Viewings

Viewings by arrangement only. Call 02089802226 to make an appointment.

## Council Tax Band

D

## EPC Rating:

B

## Energy Efficiency Rating

	Current	Potential
Very energy efficient - lower running costs		
(92 plus) <b>A</b>		
(81-91) <b>B</b>	86	87
(69-80) <b>C</b>		
(55-68) <b>D</b>		
(39-54) <b>E</b>		
(21-38) <b>F</b>		
(1-20) <b>G</b>		
Not energy efficient - higher running costs		
<b>England &amp; Wales</b>	EU Directive 2002/91/EC	