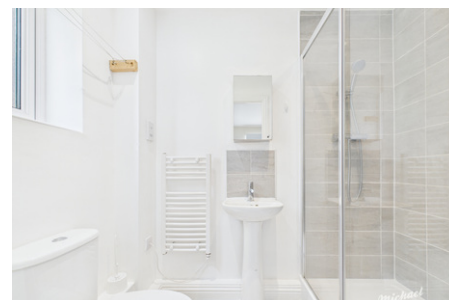
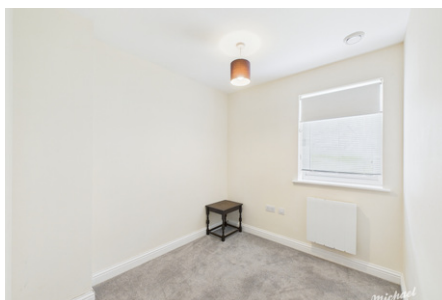


**26 Quercetum Close,
Aylesbury, Buckinghamshire**

£1,350 PCM



Michael Anthony Aylesbury Lettings are delighted to offer this well presented two bedroom ground floor flat ideally situated within walking distance to Aylesbury town centre. The accommodation comprises: Entrance hall, family bathroom, two bedrooms with en-suite to master, spacious open plan lounge / kitchen, with a parking space.



- UNFURNISHED
- GROUND FLOOR
- TOWN CENTRE LOCATION
- WALK TO LOCAL SHOPS
- OPEN PLAN LIVING SPACE
- EN-SUITE TO MASTER