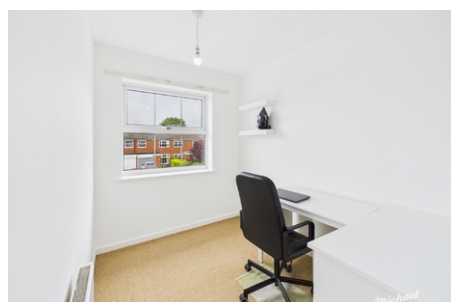


**14 Ashford Close,
Aylesbury, Buckinghamshire**

£1,750 PCM



Michael Anthony Aylesbury Lettings are pleased to present this three bedroom semi detached home in a cul-de-sac location on the sought after south side of Aylesbury. The accommodation comprises: entrance porch, living room, kitchen with a walk in pantry, dining area, three bedrooms, family bathroom, driveway parking, garage and a good size rear garden. Highly desirable school catchment area, walking distance to shops and local amenities.



- PART FURNISHED
- SEMI DETACHED
- KITCHEN & DINING AREA
- THREE BEDROOMS
- GARAGE
- PARKING