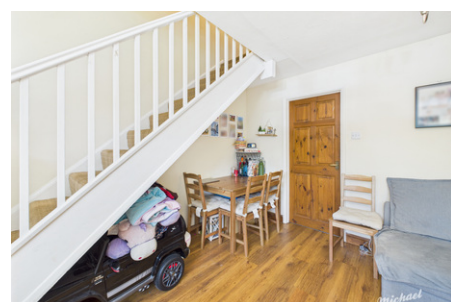


**35 Sharp Close, Aylesbury,
Buckinghamshire HP21 8RR**

£1,300 PCM



Michael Anthony Letting Aylesbury are please to present to the market this two bedroom terraced home situated on the popular Lavender Grange development. The accommodation briefly comprises a living room, a refitted kitchen, two bedrooms and a family bathroom. The property also benefits from a spacious garden, allocated parking and is conveniently located within a short walking distance of Stoke Mandeville Hospital.



- **AVAILABLE WITH ZERO DEPOSIT GUARANTEE**
- UNFURNISHED
- TWO ALLOCATED PARKING SPACES
- FRONT & REAR GARDENS
- TWO BEDROOMS