

**30 Masters House,
AYLESBURY, HP21 8FJ**

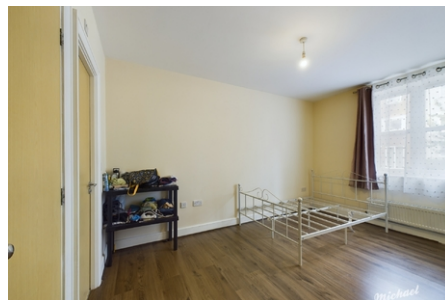
£1,450 PCM



A two bedroom ground floor apartment located within walking distance to Aylesbury town centre, railway and bus stations. The property briefly comprises two bedrooms, lounge/diner, fitted kitchen, main bathroom and en-suite to main bedroom. There is a private patio area with doors opening from the lounge and allocated parking.



Aylesbury Town Centre - A central location within easy reach of local amenities including shopping, sports facilities, eateries, bars and for commuters a mainline rail service which reaches London Marylebone in about 55 minutes. The A41



- *Available with Zero Deposit Guarantee*
- EN-SUITE
- ALLOCATED PARKING
- GROUND FLOOR
- CLOSE TO TOWN CENTRE
- CLOSE TO TRAIN STATION