

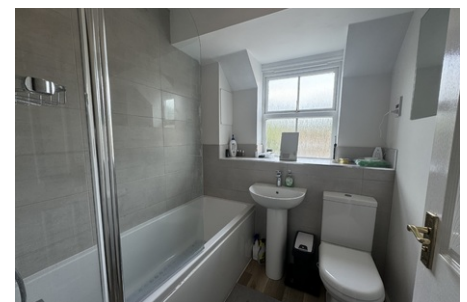
**8 Hudson Mews, Aylesbury,  
Buckinghamshire HP19 7BL**

**£1,350 PCM**



A well presented two bedroom end of terrace house situated in a cul-de-sac location on the popular Fairford Leys development. The property boasts entrance hall, guest cloakroom, kitchen, lounge, conservatory, two bedrooms, refitted bathroom, garage and parking.

Fairford Leys is a popular modern development set on the western side of Aylesbury. It is home to many shops and amenities, including a pub, restaurants, post office, vets, dentist, and a pharmacy, as well as a gym with swimming pool. There is a primary school in the development, St Marys C of E, and it is within walking distance to the Sir Henry Floyd Grammar School. There is also a regular bus service which links to the town centre and Aylesbury Train Station.



- CLOAKROOM
- KITCHEN
- CONSERVATORY

- TWO BEDROOMS
- REFITTED BATHROOM
- GARAGE