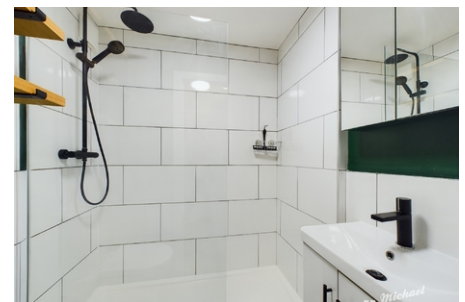
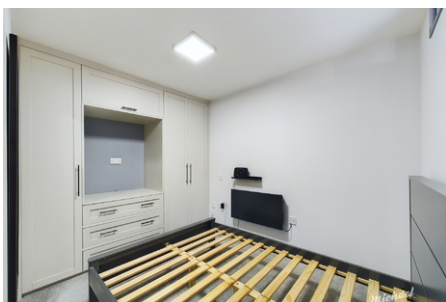


**32 Selwyn Court Long  
Meadow, Aylesbury,**

**£895 PCM**



This first floor apartment is situated in a popular residential area and is within walking distance of local amenities such as shops and restaurants. The entrance lobby leads to the refitted shower room that has been finished to a beautiful standard. The bedroom benefits from fitted storage, lastly with the main living space is an open plan lounge/kitchen, with the refitted kitchen including an oven, fridge/freezer, washing machine & tumble dryer. The property is offered to the market fully furnished and also benefits from allocated parking and security entrance.



- FULLY FURNISHED
- ALLOCATED PARKING
- REFITTED SHOWER ROOM
- REFITTED KITCHEN
- APPLIANCES INCLUDED
- NEARBY AMENITIES