



Montpellier House, Cheltenham **GL50**

Montpellier House

Cheltenham GL50

An exclusive collection of thirty, one and two bedroom apartments, perfectly positioned in Montpellier, with a lift, parking and far reaching views from the upper floors.

The location of Montpellier House is second to none. Both Montpellier Gardens and Imperial Gardens are 0.1 miles away and the development is positioned equidistance from the shops and restaurants along the Bath Road and all that Cheltenham town has to offer. Cheltenham Spa Train station is 1.4 miles away with direct trains to London Paddington.



Prices from: £200,000

Tenure: Leasehold: approximately 999 years remaining

Local authority: Cheltenham Borough Council

Council tax band: TBC

Description

Montpellier House is the regeneration of a mid-century building which has been carefully converted into a collection of apartments, offering town centre living right in the heart of Montpellier.

Comprising of thirty, one and two bedroom apartments arranged over four floors, the development offers the advantage of lift access, secure parcel delivery and parking for the two bedroom apartments with the opportunity to purchase a parking space for the one bedroom apartments (residents permit parking is also available).

All apartments benefit from fabulous ceiling heights with large windows providing far reaching views of Cleeve Hill from the upper floors. The specification is contemporary cool with wood style flooring throughout the open plan kitchen living spaces and hallway, with carpets included in the bedrooms. Tastefully designed kitchens come with a single oven, hob and fridge freezer included as well as a dishwasher included in most apartments. The shower rooms have been thoughtfully designed with black crittall glass shower screens, under sink storage and backlite mirrors.

The apartments are leasehold with a 999 year lease and will be subject to a yearly service charge.

Viewing

By prior appointment only with the agents





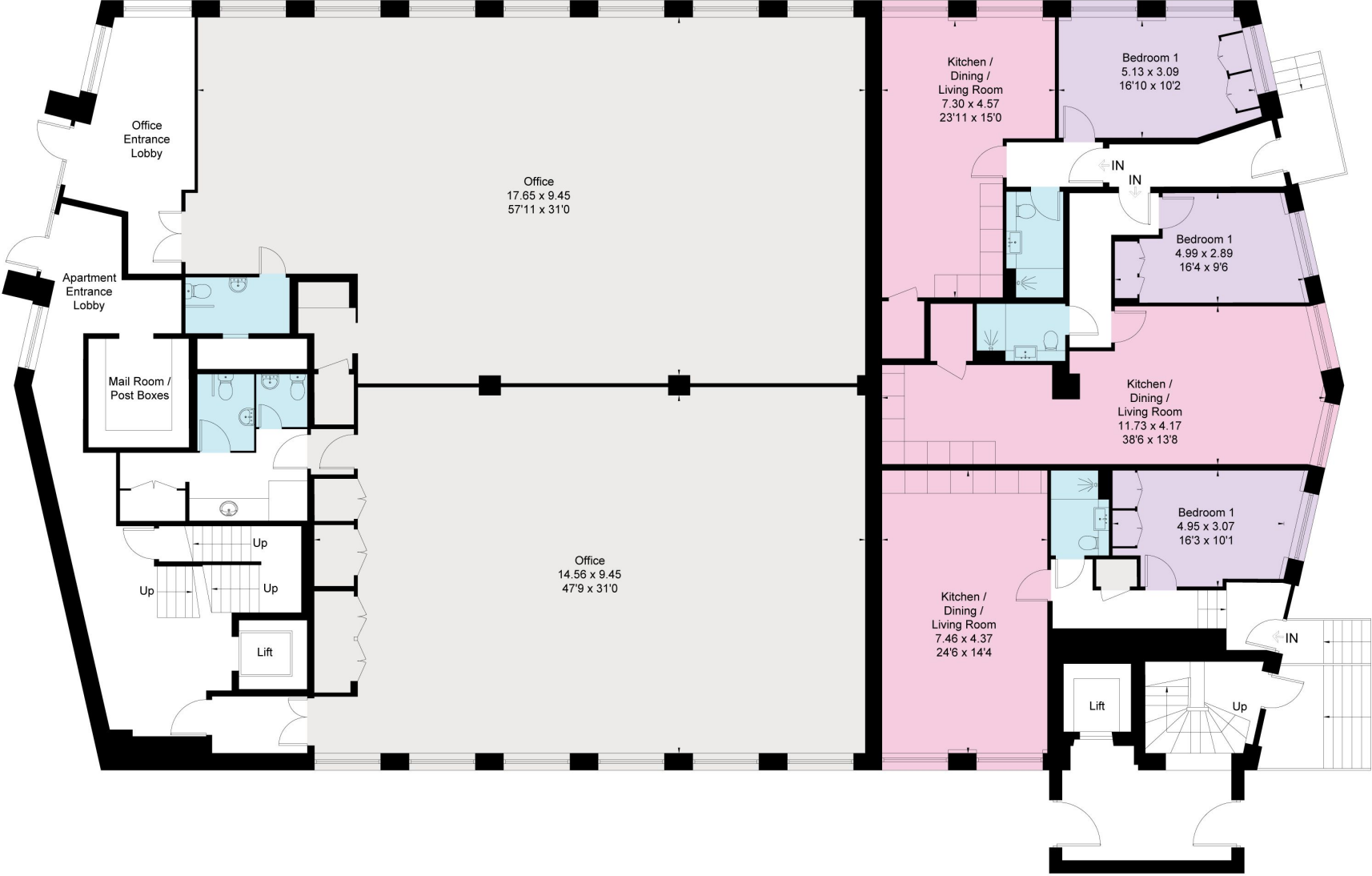
Location

A number of world class festivals are held in Cheltenham during the year including the Literature Festival, Jazz Festival, Science, Cricket and the world renowned Gold Cup horse racing at Cheltenham racecourse.

Cheltenham is called the 'Capital of the Cotswolds' and the most complete Regency town in England. The Cotswold hills and beautiful Cotswold villages are easily explored from Cheltenham and the Cities of Bristol and Birmingham are within an approximate 45 minute to 1 hours drive or train ride away.



Approximate Floor Area = 582.4 sq m / 6269 sq ft



Drawn for illustration and identification purposes only by @fourwalls-group.com #74587

Approximate Floor Area = 480.2 sq m / 5169 sq ft



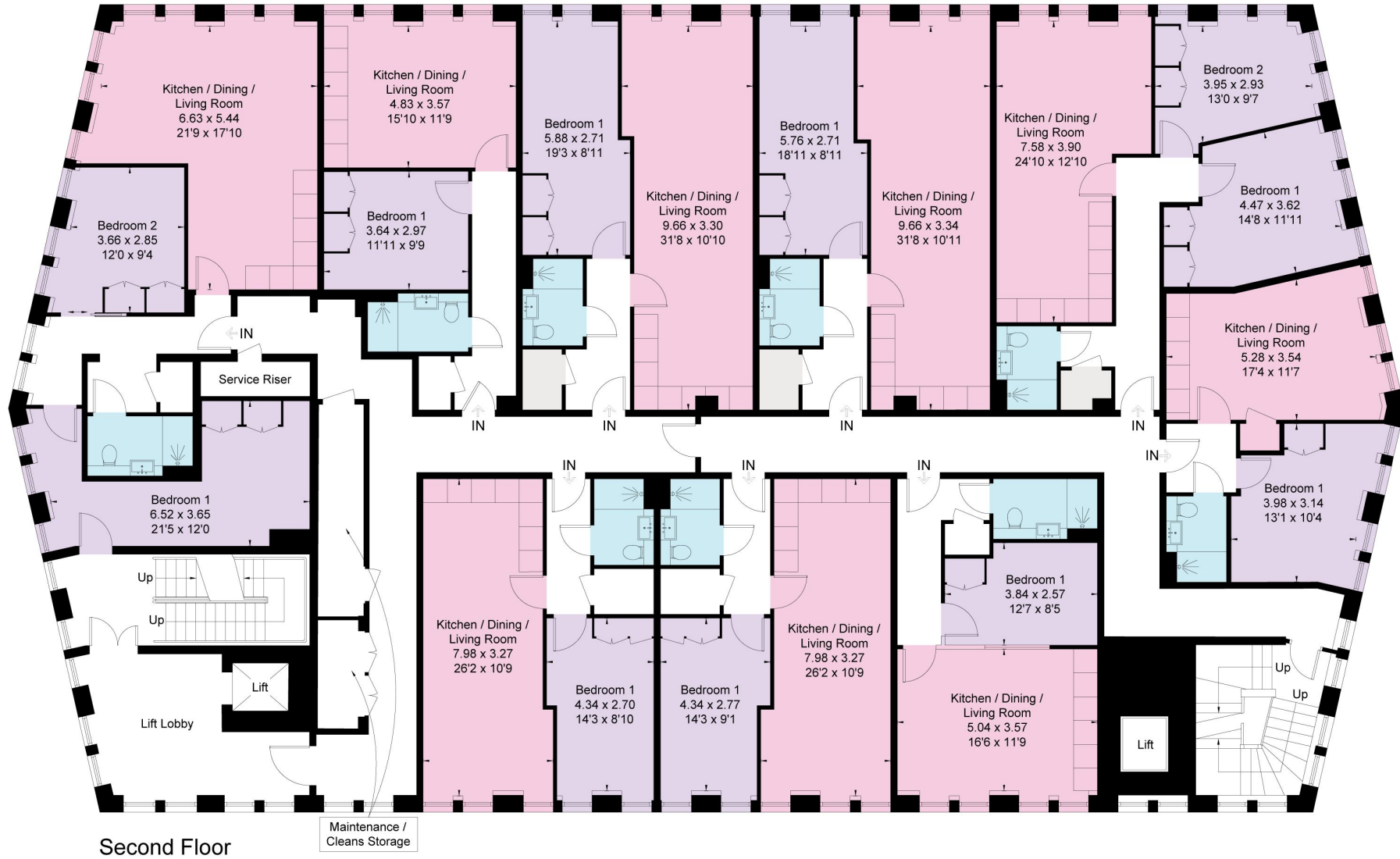
First Floor

Maintenance / Cleans Storage



Drawn for illustration and identification purposes only by @fourwalls-group.com #74587

Approximate Floor Area = 480.2 sq m / 5169 sq ft



Second Floor



Drawn for illustration and identification purposes only by @fourwalls-group.com #74587

Approximate Floor Area = 480.2 sq m / 5169 sq ft



Third Floor



Drawn for illustration and identification purposes only by @fourwalls-group.com #74587

Knight Frank

123 Promenade
Cheltenham
GL50 1NW
[knightfrank.co.uk](https://www.knightfrank.co.uk)

I would be delighted to tell you more
Katy Reynolds
+44 1242 246 957
katy.reynolds@knightfrank.com



Fixtures and fittings: A list of the fitted carpets, curtains, light fittings and other items fixed to the property which are included in the sale (or may be available by separate negotiation) will be provided by the Seller's Solicitors.

Important Notice: 1. Particulars: These particulars are not an offer or contract, nor part of one. You should not rely on statements by Knight Frank LLP in the particulars or by word of mouth or in writing ("information") as being factually accurate about the property, its condition or its value. Neither Knight Frank LLP nor any joint agent has any authority to make any representations about the property, and accordingly any information given is entirely without responsibility on the part of the agents, seller(s) or lessor(s). 2. Photos, Videos etc: The photographs, property videos and virtual viewings etc. show only certain parts of the property as they appeared at the time they were taken. Areas, measurements and distances given are approximate only. 3. Regulations etc: Any reference to alterations to, or use of, any part of the property does not mean that any necessary planning, building regulations or other consent has been obtained. A buyer or lessee must find out by inspection or in other ways that these matters have been properly dealt with and that all information is correct. 4. VAT: The VAT position relating to the property may change without notice. 5. To find out how we process Personal Data, please refer to our Group Privacy Statement and other notices at <https://www.knightfrank.com/legals/privacy-statement>.

Particulars dated September 2024. Photographs and videos dated September 2024.

All information is correct at the time of going to print. Knight Frank is the trading name of Knight Frank LLP. Knight Frank LLP is a limited liability partnership registered in England and Wales with registered number OC305934. Our registered office is at 55 Baker Street, London W1U 8AN. We use the term 'partner' to refer to a member of Knight Frank LLP or an employee or consultant. A list of members names of Knight Frank LLP may be inspected at our registered office. If you do not want us to contact you further about our services then please contact us by either calling 020 3544 0692, email to marketing.help@knightfrank.com or post to our UK Residential Marketing Manager at our registered office (above) providing your name and address.