

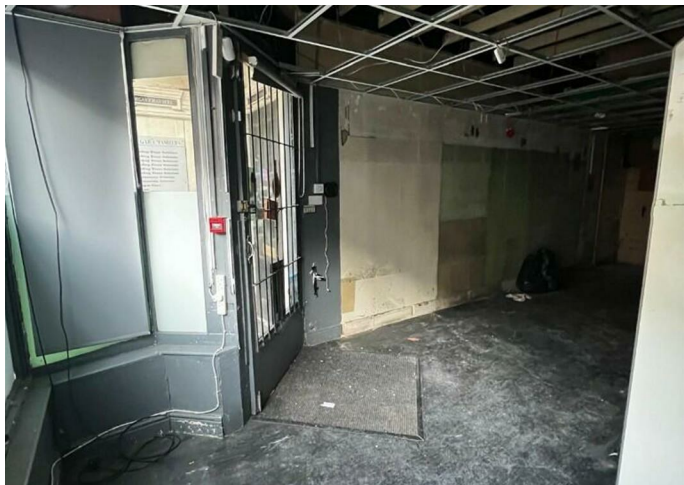


Commercial

**78 BRIDGE STREET,
NEWPORT, NP20
4AL**

£600

FEATURES



Harvey Bowes
— REAL ESTATE —

0 Bedroom Commercial located in Newport

Location: Bridge Street, Newport - in the heart of the city center!
Rent: Only £600 per month

Key Features:

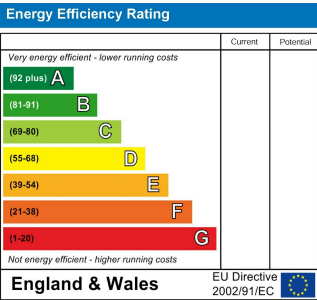
Perfect for small retail shops or takeaway ready meals businesses.
High footfall area with excellent visibility.
Convenient central location, ideal for attracting local customers and visitors.
This unit offers the ideal opportunity to kickstart or grow your business in a bustling commercial hub.

Enquire today! Don't miss out - contact us now to arrange a viewing.

Make your business the next big thing on Bridge Street!

Call us on
01633 740990

Council Tax Band



Agents Note: Whilst every care has been taken to prepare these particulars, they are for guidance purposes only. All measurements are approximate and are for general guidance purposes only and whilst every care has been taken to ensure their accuracy, they should not be relied upon and potential buyers are advised to recheck the measurements.

