



**PEGASUS
WOOBURN BALES**



WELCOME TO PEGASUS WOOBURN BALES

Wooburn Bales is in the heart of Wooburn Green on the River Wye in Buckinghamshire. This scenic and historic village nestles among the Chiltern Hills, offering a social lifestyle centered on The Green with charming pubs, restaurants, cafés and shops.

Truly offering the best of both worlds, the village's proximity to towns including Henley and Marlow – not to mention its fast and easy access to London and Oxford – means you are perfectly placed to enjoy rural life and the cultural riches of the city.

Pegasus Wooburn Bales honours the area's heritage as an ancient centre of paper milling and makes the most of views across the stunning Chiltern Hills.

We are proud to introduce these beautiful homes with their enriching communal facilities and friendly community. Come and discover the fulfilling lifestyle awaiting you at Wooburn Bales.



OUR COMMUNITY

A PLACE FOR YOU

With wellbeing at the heart of everything we do, Pegasus Wooburn Bales has been expertly crafted to nurture your comfort, contentment and wellness.

Spacious 1, 2 and 3 bedroom homes make the most of scenic views, allowing you to start the day with fresh air and natural beauty. Floor-to-ceiling windows allow daylight to flood in, while generous private balconies and a communal terrace overlooking the stunning Chilterns invite you to relax outdoors with a coffee.

Wooburn Bales is more than a beautiful home in a lovely setting. Created with the understanding that relationships are key to wellbeing, Wooburn Bales will help you make new friendships and deepen existing connections. Convivial shared spaces encourage togetherness, from the well-equipped social kitchen to the

generous communal lounge where you'll find a cosy spot for a chat, a game and a glass of wine. On warm days, take your drinks out onto the terrace where relaxing surroundings encourage great conversation.

When you're hosting, there's no need for friends and family to go home at the end of a wonderful day. The guest suite is bookable through the dedicated Lifehost. The on-site Lifehost is here to help you get the most out of your home and become part of a flourishing community that nurtures everyone.

Feeling safe and secure is a vital component of wellbeing. Wooburn Bales features an advanced security system with gated parking, video door entry and Tunstall support service, bringing you peace of mind so that you can focus on the important things in life.

LOCATION

GREEN AND EASY

Wooburn Green is a traditional English village, sociably arranged around a village green. Compact and convenient to walk around, it offers excellent access to shops, pubs, restaurants, cafés, sports clubs and a medical centre.

The Chilterns curve protectively around the village, creating lovely views of hills, woods and water meadows that beckon you to explore.

And when you wish to travel further afield, proximity to Bourne End train station and other great travel links to London and Oxford make Wooburn Green a fantastic jumping-off point.

SURROUNDING AREA

01	THE GREEN
02	BUS STOP
03	M40

EATING AND DRINKING

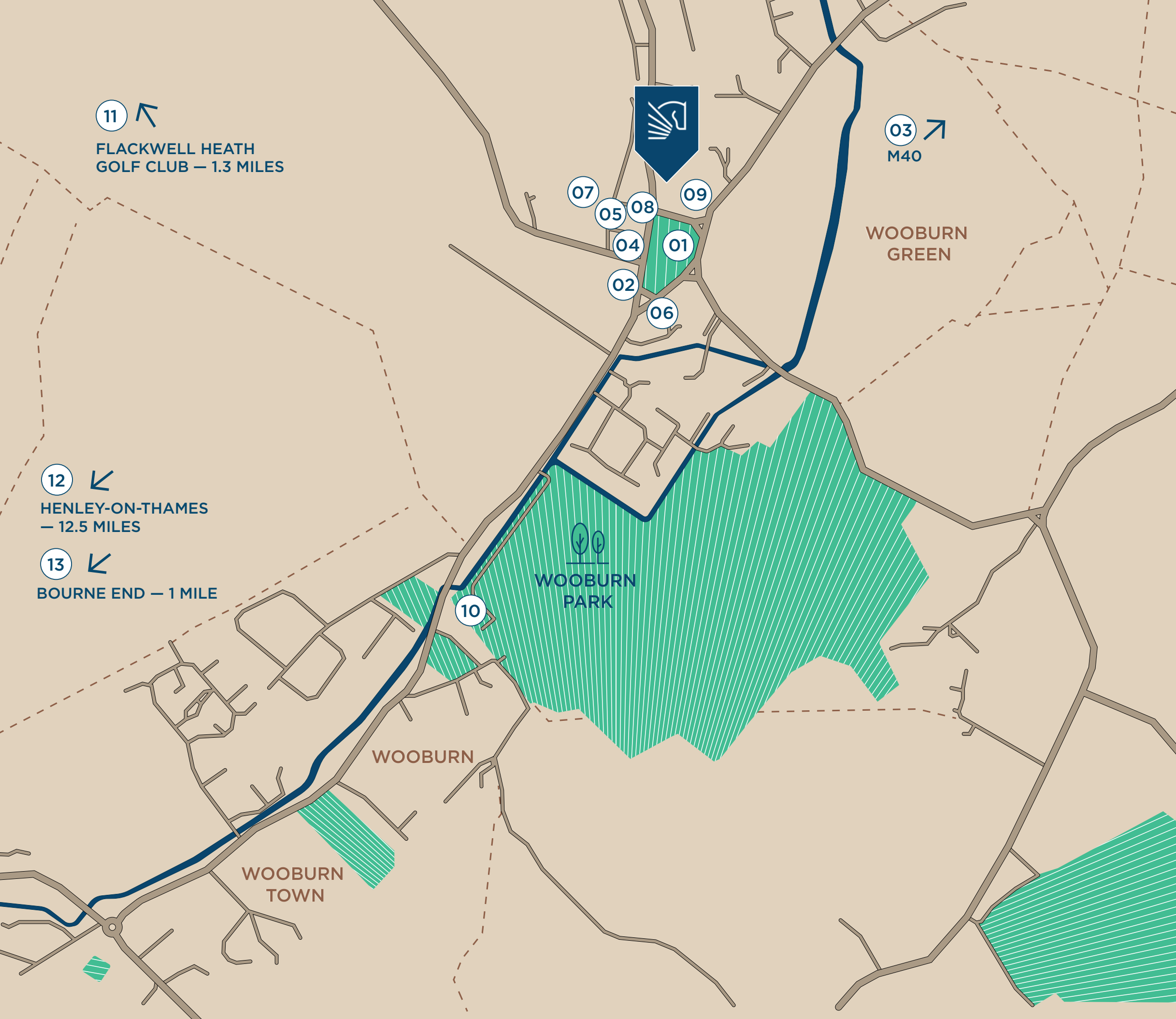
04	DOLCE VITA (ITALIAN)
05	GREEN DELIGHT
06	GRAY'S INN

LOCAL AMENITIES

07	WOOBURN GREEN TESCO
08	WOOBURN GREEN POST OFFICE
09	BOURNE END & WOOBURN GREEN MEDICAL CENTRE

PLACES TO GO

10	WOOBURN PARK LAWN TENNIS CLUB
11	FLACKWELL HEATH GOLF CLUB
12	HENLEY-ON-THAMES
13	BOURNE END



“Heritage, history
and community
are at the heart
of Wooburn Green.”

ANCIENT HISTORY

Wooburn Green is a place where history has left its mark. From St Paul's Church, dating back to the 12th century, to the gorgeous cottages clustered around the village green, and a paper manufacturing heritage stretching back many hundreds of years, today's thriving community rests on a long and fascinating history.



EATING & DRINKING

If you appreciate an exposed beam, you'll love the watering holes and eateries in and around Wooburn Green. Here, 18th century pubs serve up roaring fires, real ales and great British food. The area's charming local restaurants bring tastes of continental Europe to the Chilterns, while its coffee shops have you covered for tea and cake.



DOLCE VITA

A summer evening under the arbour at Dolce Vita with friends and a bottle of Chianti and a bowl of fresh pasta and you could almost be in Tuscany. Set on The Green, with lovely views, Dolce Vita's intimate atmosphere and personal and attentive service can elevate a delicious meal into a memorable experience, tempting you back for seconds.

THE WALNUT TREE

Follow the Wye downstream for a mile or so, and you'll meet the River Thames. Near this confluence, The Walnut Tree pub announces that "muddy boots are welcome here" which is fortunate because the hostelry is a favourite for walkers looking for good grub and real ales in front of a roaring fire.



LOCAL CLUBS

Whether you want to get fit, join a mindfulness class, perfect your swing or learn a new sport, Wooburn Bales offers plenty of health facilities that welcome new members. A 10-minute stroll will take you to a heated outdoor pool, and the village also has its own tennis club. Several nearby golf courses feature top-notch tuition, great views and tempting 19th holes.



DAVID LLOYD BEACONSFIELD

Minutes from Wooburn Bales, this friendly and inclusive health and fitness destination offers extensive facilities. There are two pools (including a heated outdoor pool) plus a spa retreat and spa garden, new gym equipment and a purpose-built Mind and Body studio.

WOOBURN PARK LAWN TENNIS CLUB

This popular tennis club is a past winner of the LTA East Regional Community Club of the Year, and for good reason. It boasts four courts with floodlights, a mini-court, practice wall, a well-appointed clubhouse and coaching for players of all ages.



HEDSOR GOLF COURSE

On a plateau surrounded by mature trees, Hedsor's compact course offers players a comfortable stroll with the promise of what it calls "fascinating hazards". The club offers a pay-and-play option and monthly membership with unlimited play.

FLACKWELL HEATH GOLF CLUB

Welcoming visitors and new members, Flackwell offers superb well-crafted greens. The par 71 course is built on wooded undulating heathland and maintained in excellent condition. A bar and lounge afford lovely views over the Wye Valley, with Sunday roasts, quiz nights and open competitions to keep you entertained all year round.

ARTS & CULTURE



TREASURE HOUSES

Buckinghamshire’s rolling hills are studded with some of England’s finest and most famous historic houses, including Bletchley Park and Cliveden. Many of these precious buildings and gardens are in the care of the National Trust and are open to the public.

HUGHENDEN MANOR

Once home to Queen Victoria’s favourite Prime Minister, Benjamin Disraeli, during the Second World War Hughenden Manor housed a top-secret map-making operation. Today, visitors are welcome to explore the mansion’s well-preserved interiors and 680 acres of parkland, including some of the best of the Chilterns countryside.

DORNEYWOOD GARDEN

The house at Dorneywood is a grace-and-favour home for the Secretary of State and out of bounds to the public, but on certain days visitors are welcome to enter the exquisite 1930s-style cottage and kitchen gardens with their magnificent herbaceous borders and rose displays.

CLIVEDEN

This illustrious country house and estate near Taplow have been home to a Prince, two Dukes and the well-connected Astor family. Today, Cliveden is one of the National Trust’s most popular attractions. Tour the house, wander its extensive grounds, or spoil yourself with a spa day and high tea at the luxury hotel.

CHILTERN HILLS

A designated Area of Outstanding Natural Beauty (AONB), the rolling Chilterns reward walkers with far-reaching views. Admire the panoramas from vantage points at Coombe Hill, Pulpit Hill and Watlington Hill, or roam the woodland at Low Scrubs. The chalk hills of the Chilterns are a Site of Special Scientific Interest (SSSI), offering a rare habitat for flora and fauna and great spotting opportunities for wildlife lovers.



“Almost every part of the village enjoys lovely views of hills, woods and water meadows that beckon you to explore. Take a friend and picnic on the banks of the River Wye, or strike out for a ramble in the Chilterns.”



QUINTESSENTIAL VILLAGE LIFE

At the heart of Wooburn Green is its picturesque village green, around which cluster vine-covered cottages, pubs and restaurants, shops and friendly cafés. Wooburn Bales places you at the heart of village life and promises a sense of each day being well spent.

Stylish and contemporary,
yet warm and welcoming,
Wooburn Bales offers a rural
lifestyle in a village with a
750 year-old industrial heritage.



Like other settlements along the River Wye, Wooburn Green is an ancient centre of milling. From 1235 to 1999, Glory Mill produced corn and paper, using the river's current to power its machinery. Wooburn Bales honours this history in its name, for the mill produced 'bales', or stacks, of paper. The building's industrial-era-inspired architecture also nods to the village's manufacturing heritage.

Step through the brick portico into a stylish reception area. An inviting, contemporary feel extends through the welcoming communal lounge, where stylish furniture and a relaxing colour scheme creates a sophisticated and cosy place to settle in and socialise.





“A beautiful place
with an enriching
lifestyle.”



FEELS LIKE HOME

—
Wooburn Bales is ready to welcome you to your wonderful new home – a place to meet and make new friends, deepen relationships and enjoy a fun and enriching lifestyle. All in the comfort of a community designed with you in mind.



DISCERNING DESIGN

We've paid great consideration to all aspects of the apartments' design, from planning comfortable layouts to specifying stylish fixtures and fittings.

Wooburn Bales' architecture and interiors take inspiration from the industrial age, made modern for a contemporary audience. The resulting light, clean spaces feature well-crafted design details like chrome hardware.

Shared areas are thoughtfully designed for group socialisation and cosy conversation, making them delightful places to connect with others. From your morning coffee in the lounge to a sundowner with friends on the terrace, every day at Wooburn Bales helps you share more and feel better.

KITCHEN

Food preparation becomes a pleasure when your kitchen features flawless materials like solid stone worktops, upstands and hob panels. Top-quality appliances include a NEFF stainless steel slide-and-hide oven, NEFF ceramic hob and NEFF stainless steel microwave.



BEDROOMS

Each one, two and three bedroom home feels well-connected to the outdoors, whether through terraces, balconies or large windows. These flood the apartments with light and offer verdant views, bringing a real sense of wellbeing.



BATHROOM

The bathrooms are equally well-thought-out and appointed, with shower rooms and ensuites fitted with anti-slip stone resin shower trays, low surface-temperature towel radiators and custom-built vanity units.

HOME SPECIFICATIONS

HALLWAY

FLOOR FINISHES

- Deep pile carpet, maple

SKIRTING

- Satin white skirting

FRONT DOOR

- White cottage style front door

INTERNAL DOORS

- White cottage door

IRONMONGERY

- Lever handle on round rose, polished chrome finish

WALL/CEILING FINISHES

- Matte emulsion walls, light grey
- Matte emulsion ceilings, white

SOCKETS/SWITCHES

- Plastic switches and plastic double sockets, white

LIGHT FITTINGS

- Downlights

LIVING ROOM

FLOOR FINISHES

- Deep pile carpet, maple

SKIRTING

- Satin white skirting and window cills

INTERNAL DOORS

- White cottage door

IRONMONGERY

- Lever handle on round rose, polished chrome finish

WALL/CEILING FINISHES

- Matte emulsion walls, light grey
- Matte emulsion ceilings, white

SOCKETS/SWITCHES

- Plastic switches and plastic double sockets, one with double USB charging point, white
- Plastic dimmer switch, white

LIGHT FITTINGS

- Pendants and downlights

KITCHEN

SOCKETS/SWITCHES

- Plastic switches and plastic double sockets, one with double USB charging point, white

LIGHT FITTINGS

- Downlights
- Under cupboard luminaires

BASE & WALL UNITS

- Shaker style doors, matte cashmere grey
- Cashmere carcass
- Brushed nickel handles

WORKTOPS & SPLASHBACK

- 20mm thick silestone worktops, upstands and splashback, white

SINK

- Stainless steel undermount sink (bowl and a half where space allows)

TAPS

- Chrome 2 handle mixer tap

APPLIANCES

- NEFF Slide & Hide single oven
- NEFF microwave with grill
- NEFF ceramic hob with knob controls
- NEFF canopy cooker hood
- AEG integrated dishwasher
- AEG integrated fridge freezer

UTILITY CUPBOARD

APPLIANCES

- AEG combined washer dryer

BEDROOM

FLOOR FINISHES

- Deep pile carpet, maple

SKIRTING

- Satin white skirting

INTERNAL DOORS

- White cottage door

IRONMONGERY

- Lever handle on round rose, polished chrome finish

WALL/CEILING FINISHES

- Matte emulsion walls, light grey
- Matte emulsion ceilings, white

SOCKETS/SWITCHES

- Plastic switches and plastic double sockets, one with double USB charging point, white

LIGHT FITTINGS

- Pendants and downlights

WARDROBES

- Sliding door or walk-in wardrobe in master bedrooms

SHOWER ROOMS & ENSUITES

FLOOR FINISHES/SKIRTING

- Anti-slip grey wood effect tiles

WALL FINISHES

- Marble-effect glazed porcelain tiles in shower
- Glazed porcelain wood texture wall tiles, sequoia smoke grey effect
- Matte emulsion walls (white)

CEILING FINISHES

- Matte emulsion ceilings, (white)

INTERNAL DOORS

- White cottage door

IRONMONGERY

- Lever handle on round rose, polished chrome
- Turn and release door lock, polished chrome

LIGHTING

- Downlights

WC

- White porcelain wall hung pan (comfort height)
- White soft closing toilet seat and cover, chrome flush plate

SHOWER

- Anti-slip stone resin shower tray, white
- Thermostatic shower mixer valve, chrome
- Fixed rain head shower head, chrome
- Hand shower, chrome
- Polished stainless steel rail

CABINET

- Mirror cabinet, including lighting and shaver point

HEATED TOWEL RAIL

- Towel radiator, 1200mm x 450mm, chrome



DEVELOPMENT MAP

- COMMUNAL TERRACE

COMMUNAL AREA

1 BED APARTMENT

ENTRANCE POINT
- LIFEHOST OFFICE

HALLWAYS/FACILITIES

2 BED APARTMENT

DISABLED PARKING
- BUGGY STORE

BOUNDARY

PLANT ROOM

LIFTS
- BIN STORE

ELECTRIC CAR CHARGERS

STAIRS

FIRE EXIT



DEVELOPMENT LAYOUT

- A. ENTRANCE LOBBY

D. CLOAKROOM

G. PLANT ROOM

I. GUEST SUITE
- B. FOYER

E. REFUSE STORE

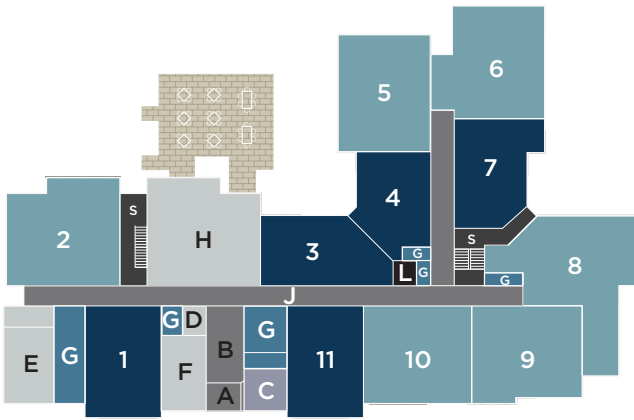
H. COMMUNAL LOUNGE

J. CORRIDORS
- C. LIFEHOST OFFICE

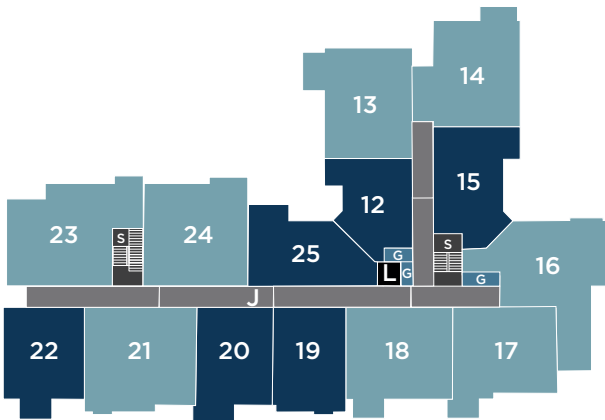
F. BUGGY STORE

- 1 BED APARTMENT
- 2 BED APARTMENT
- 3 BED APARTMENT

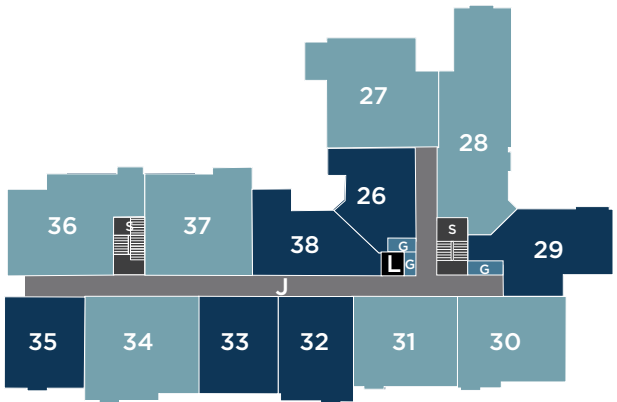
GROUND FLOOR



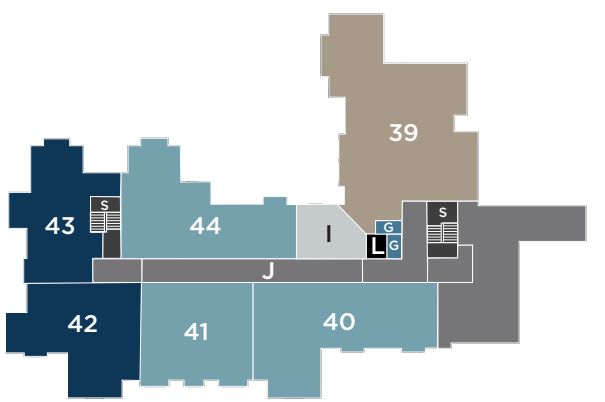
FIRST FLOOR



SECOND FLOOR

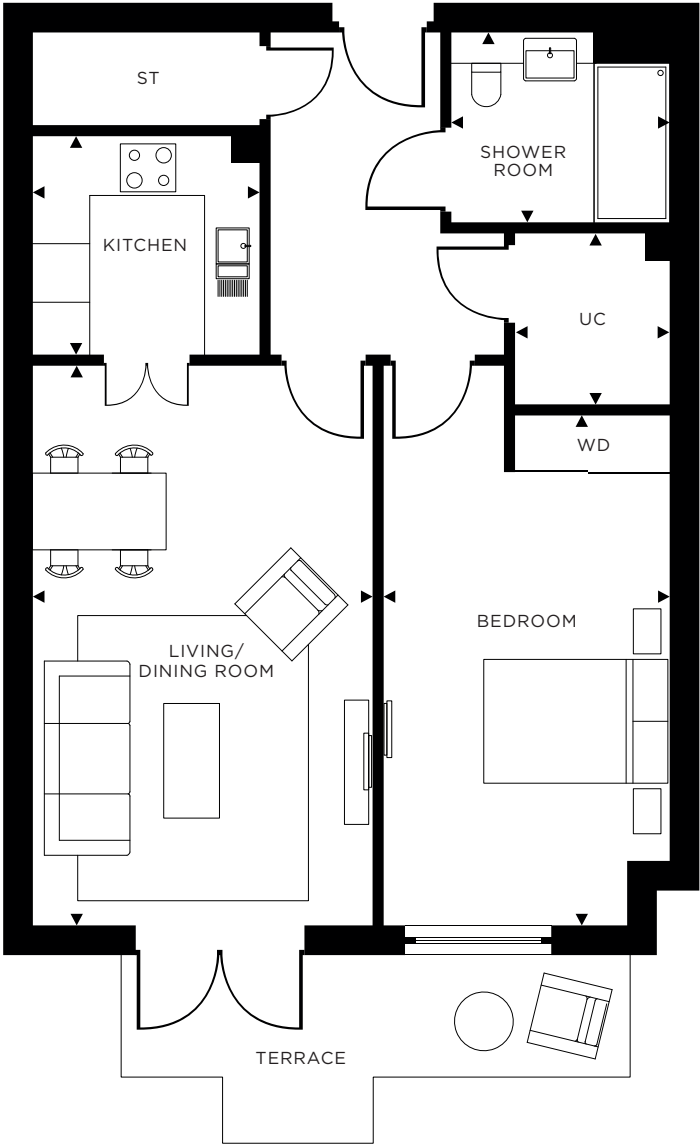


THIRD FLOOR



APARTMENT 1 GROUND FLOOR

1 BEDROOM HOME



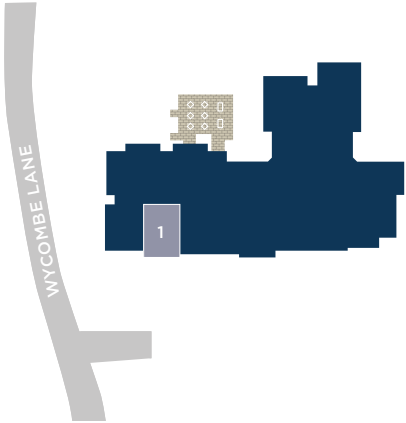
DIMENSIONS

KITCHEN		UTILITY CUPBOARD	
2.40M X 2.29M	7'10" X 7'6"	1.63M X 1.80M	5'4" X 5'10"
LIVING/DINING ROOM		SHOWER ROOM	
3.56M X 5.87M	11'8" X 19'3"	2.28M X 2.00M	7'5" X 6'6"
BEDROOM			
5.35M X 3.00M	17'7" X 9'10"		

KEY

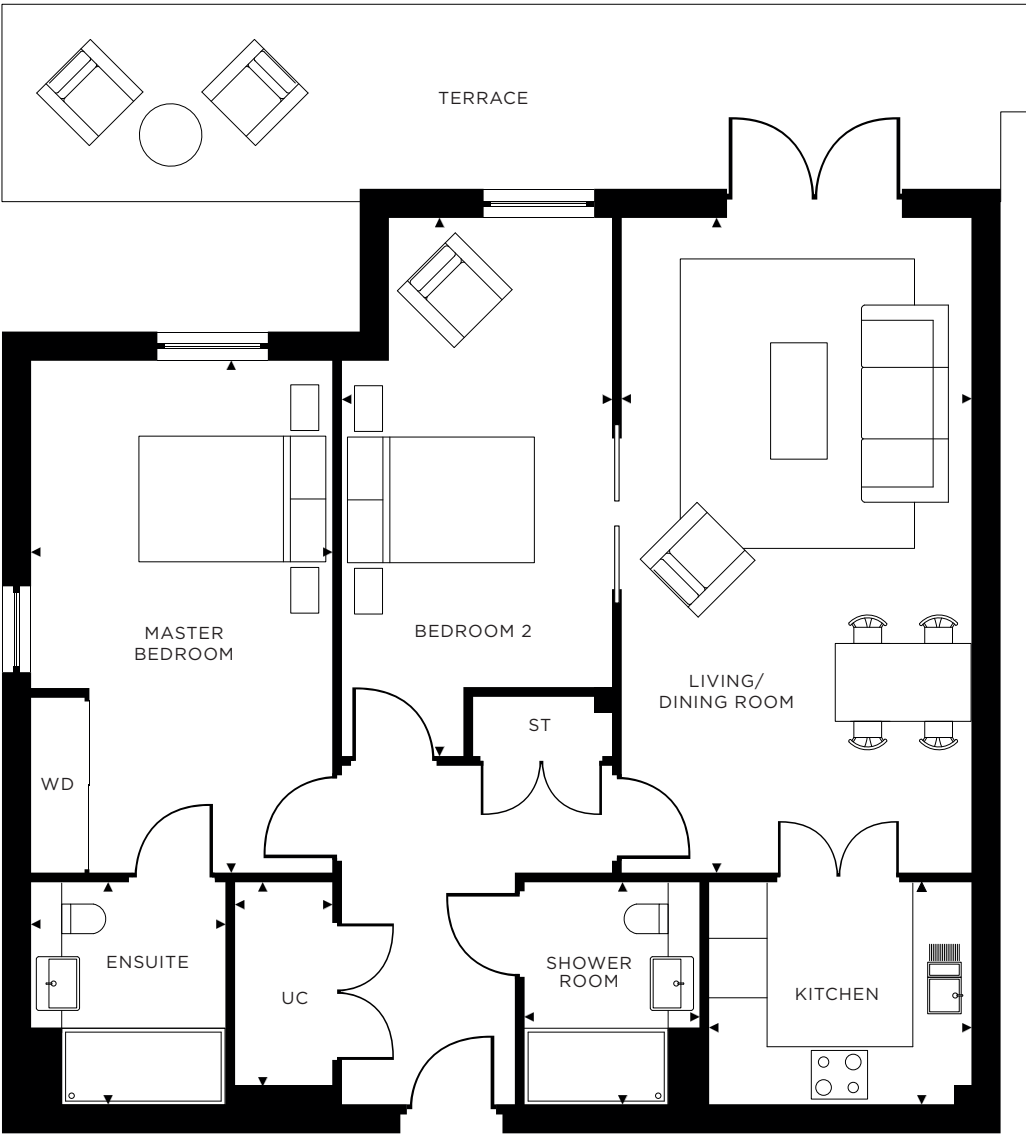
ST	STORE
WD	WARDROBE
UC	UTILITY CUPBOARD

TOTAL AREA 61.94 M² 666.7 FT²



APARTMENT 2 GROUND FLOOR

2 BEDROOM HOME



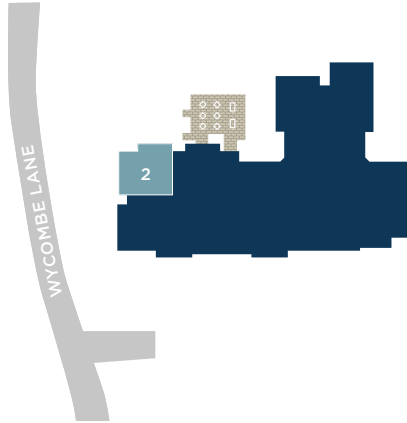
DIMENSIONS

KITCHEN		UTILITY CUPBOARD	
2.29M X 2.71M	7'6" X 8'10"	1.00M X 2.28M	3'3" X 7'5"
LIVING/DINING ROOM		SHOWER ROOM	
3.60M X 6.74M	11'10" X 22'1"	1.80M X 2.28M	5'10" X 7'5"
MASTER BEDROOM		ENSUITE	
3.10M X 5.28M	10'2" X 17'4"	2.00M X 2.28M	6'6" X 7'5"
BEDROOM 2			
2.79M X 4.83M	9'2" X 15'10"		

KEY

ST	STORE
WD	WARDROBE
UC	UTILITY CUPBOARD

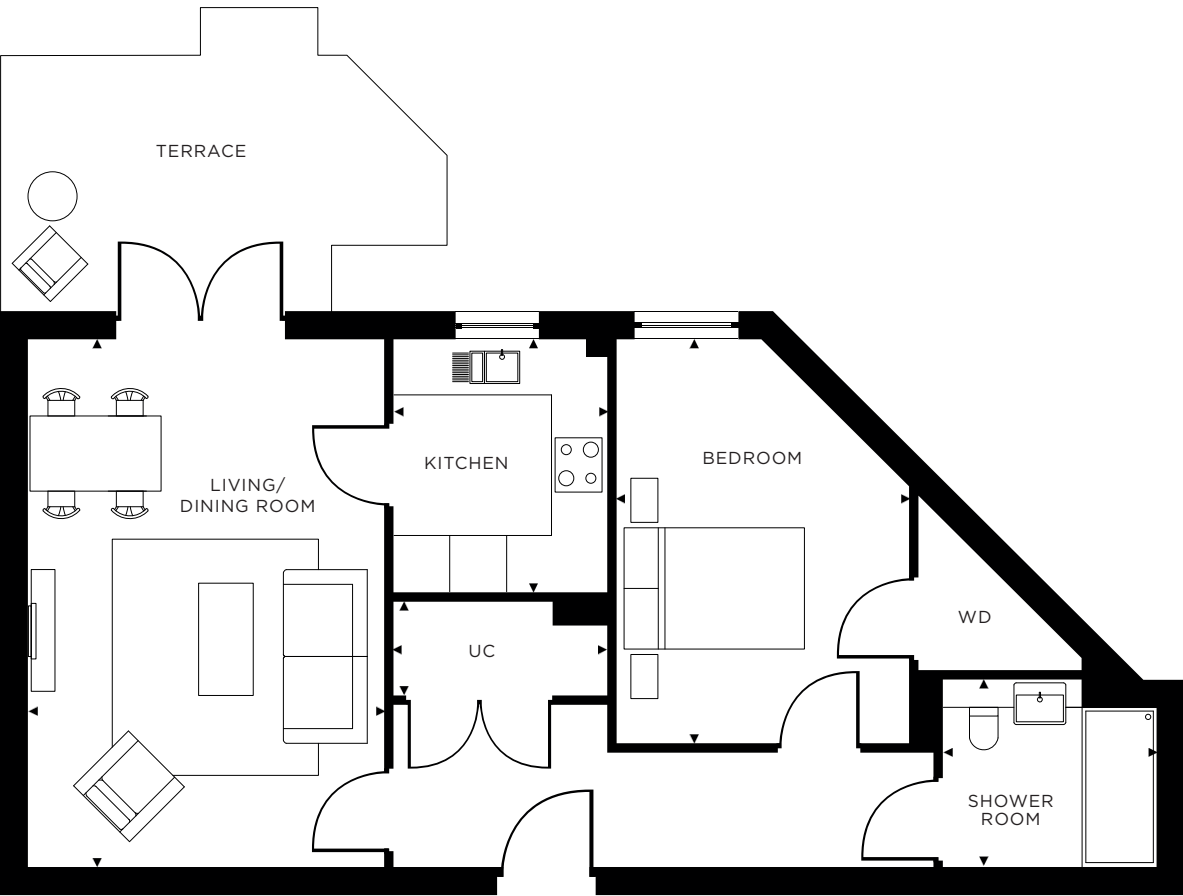
TOTAL AREA 82.88 M² 892.1 FT²



APARTMENT 3 GROUND FLOOR



1 BEDROOM HOME



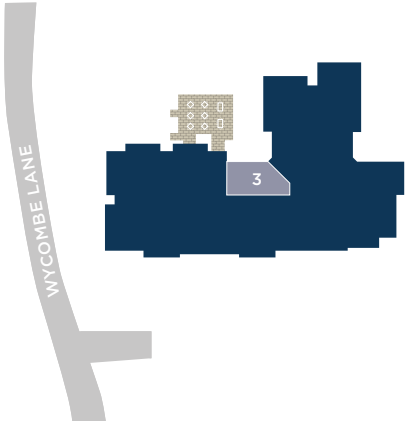
DIMENSIONS

KITCHEN		UTILITY CUPBOARD	
2.29M X 2.71M	7'6" X 8'11"	2.28M X 1.00M	7'5" X 3'3"
LIVING/DINING ROOM		SHOWER ROOM	
3.80M X 5.64M	12'6" X 18'6"	2.28M X 2.00M	7'5" X 6'6"
BEDROOM			
4.31M X 3.12M	14'2" X 10'3"		

KEY

WD	WARDROBE
UC	UTILITY CUPBOARD

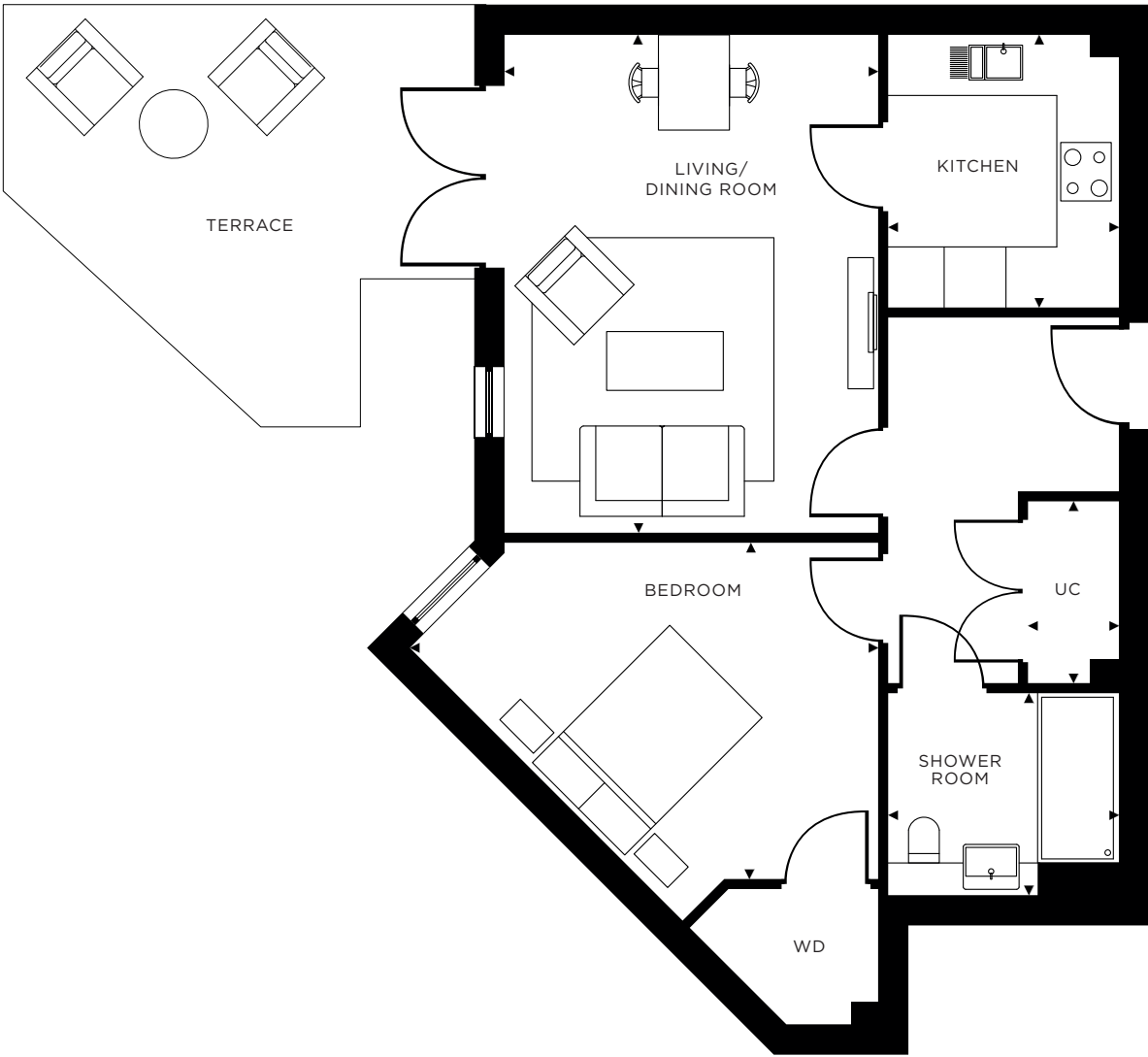
TOTAL AREA 59.08 M² 635.9 FT²



APARTMENT 4 GROUND FLOOR



1 BEDROOM HOME



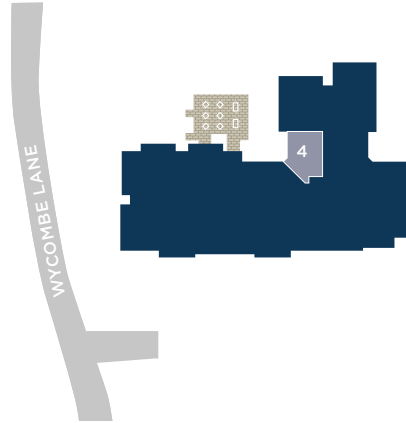
DIMENSIONS

KITCHEN		UTILITY CUPBOARD	
2.29M X 2.71M	7'6" X 8'11"	0.90M X 1.80M	2'11" X 5'10"
LIVING/DINING ROOM		SHOWER ROOM	
3.70M X 4.93M	12'2" X 16'2"	2.28M X 2.00M	7'5" X 6'6"
BEDROOM			
3.70M X 3.33M	12'2" X 10'11"		

KEY

WD	WARDROBE
UC	UTILITY CUPBOARD

TOTAL AREA 53.59 M² 576.8 FT²



APARTMENT 5
GROUND FLOOR

2 BEDROOM HOME



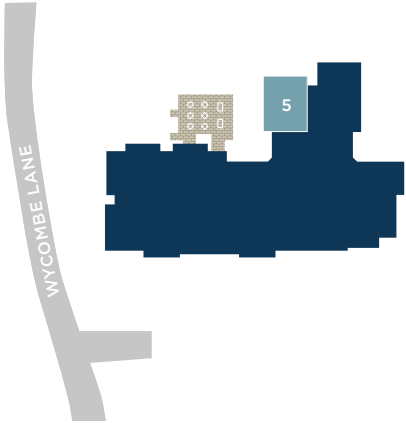
DIMENSIONS

KITCHEN		UTILITY CUPBOARD	
2.29M X 2.71M	7'6" X 8'11"	1.00M X 1.80M	3'3" X 5'10"
LIVING/DINING ROOM		SHOWER ROOM	
3.72M X 5.39M	12'2" X 17'8"	1.61M X 2.28M	5'3" X 7'5"
MASTER BEDROOM		ENSUITE	
3.16M X 5.39M	10'4" X 17'8"	2.00M X 2.28M	6'6" X 7'5"
BEDROOM 2			
2.79M X 3.52M	9'2" X 11'7"		

TOTAL AREA 77.05 M² 829.4 FT²

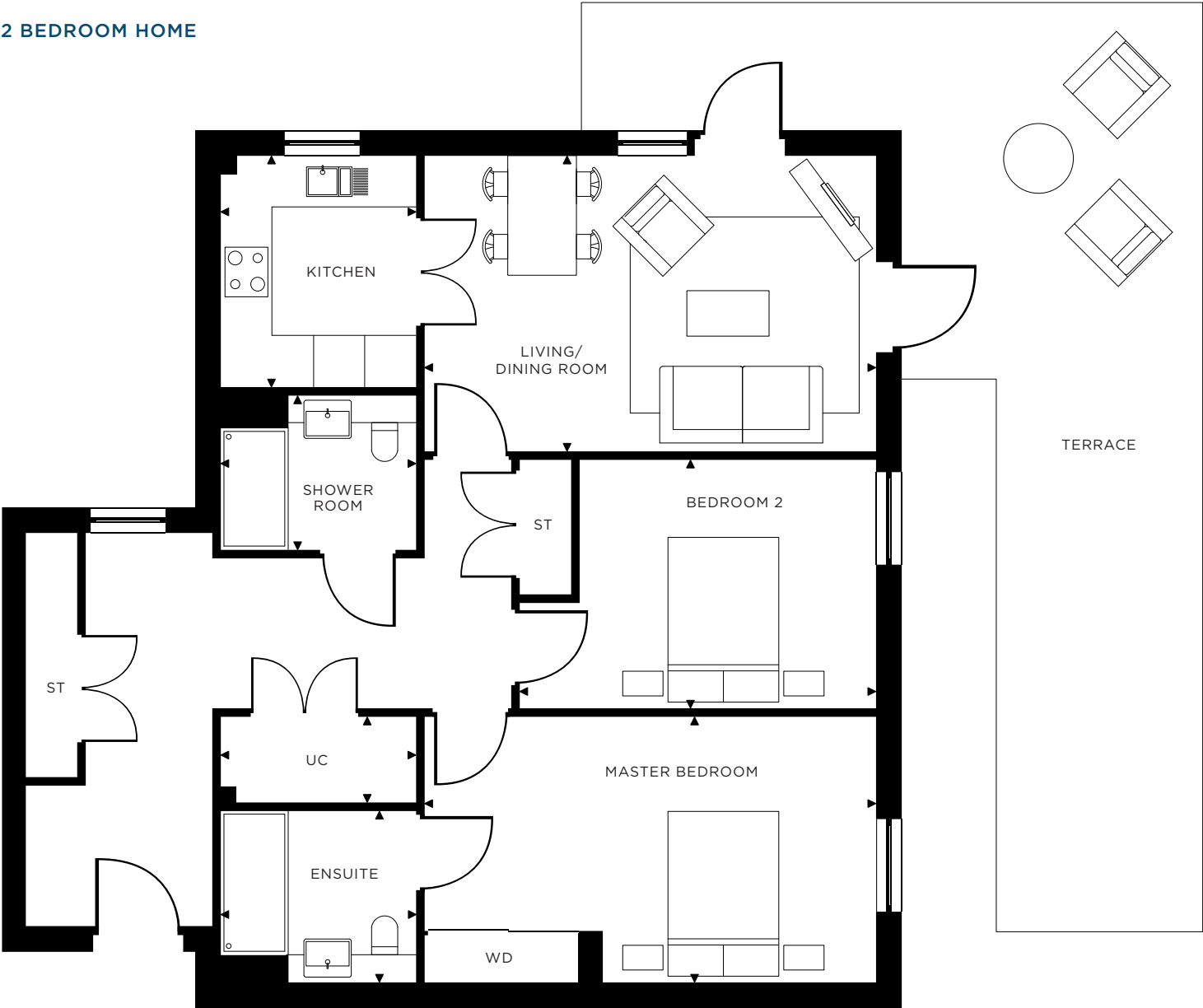
KEY

ST	STORE
WD	WARDROBE
UC	UTILITY CUPBOARD



APARTMENT 6
GROUND FLOOR

2 BEDROOM HOME



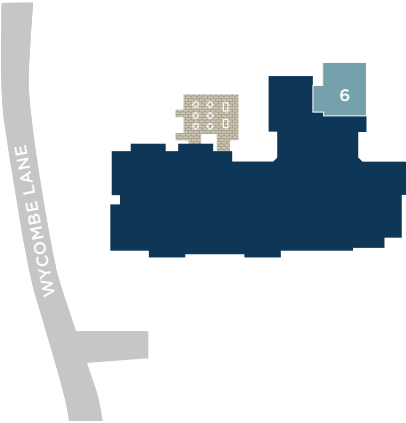
DIMENSIONS

KITCHEN		UTILITY CUPBOARD	
2.29M X 2.71M	7'6" X 8'11"	2.28M X 1.00M	7'6" X 3'3"
LIVING/DINING ROOM		SHOWER ROOM	
3.46M X 5.28M	11'4" X 17'4"	2.28M X 1.80M	7'6" X 5'10"
MASTER BEDROOM		ENSUITE	
3.10M X 5.28M	10'2" X 17'4"	2.28M X 2.00M	7'5" X 6'6"
BEDROOM 2			
2.91M X 3.47M	9'7" X 11'4"		

TOTAL AREA 84.50 M² 909.6 FT²

KEY

ST	STORE
WD	WARDROBE
UC	UTILITY CUPBOARD



APARTMENT 7
GROUND FLOOR



1 BEDROOM HOME



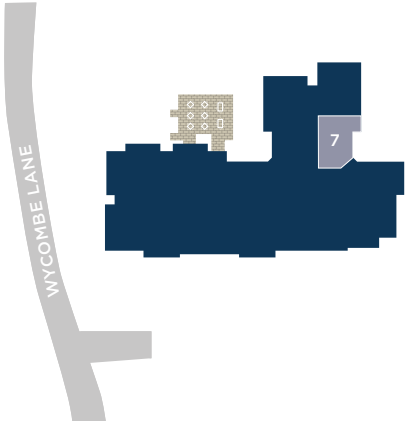
DIMENSIONS

KITCHEN		UTILITY CUPBOARD	
2.29M X 2.71M	7'6" X 8'11"	2.28M X 1.10M	7'5" X 3'7"
LIVING/DINING ROOM		SHOWER ROOM	
5.28M X 5.46M	17'4" X 17'11"	2.28M X 2.00M	7'5" X 6'6"
BEDROOM			
3.25M X 3.70M	10'8" X 12'2"		

KEY

ST	STORE
WD	WARDROBE
UC	UTILITY CUPBOARD

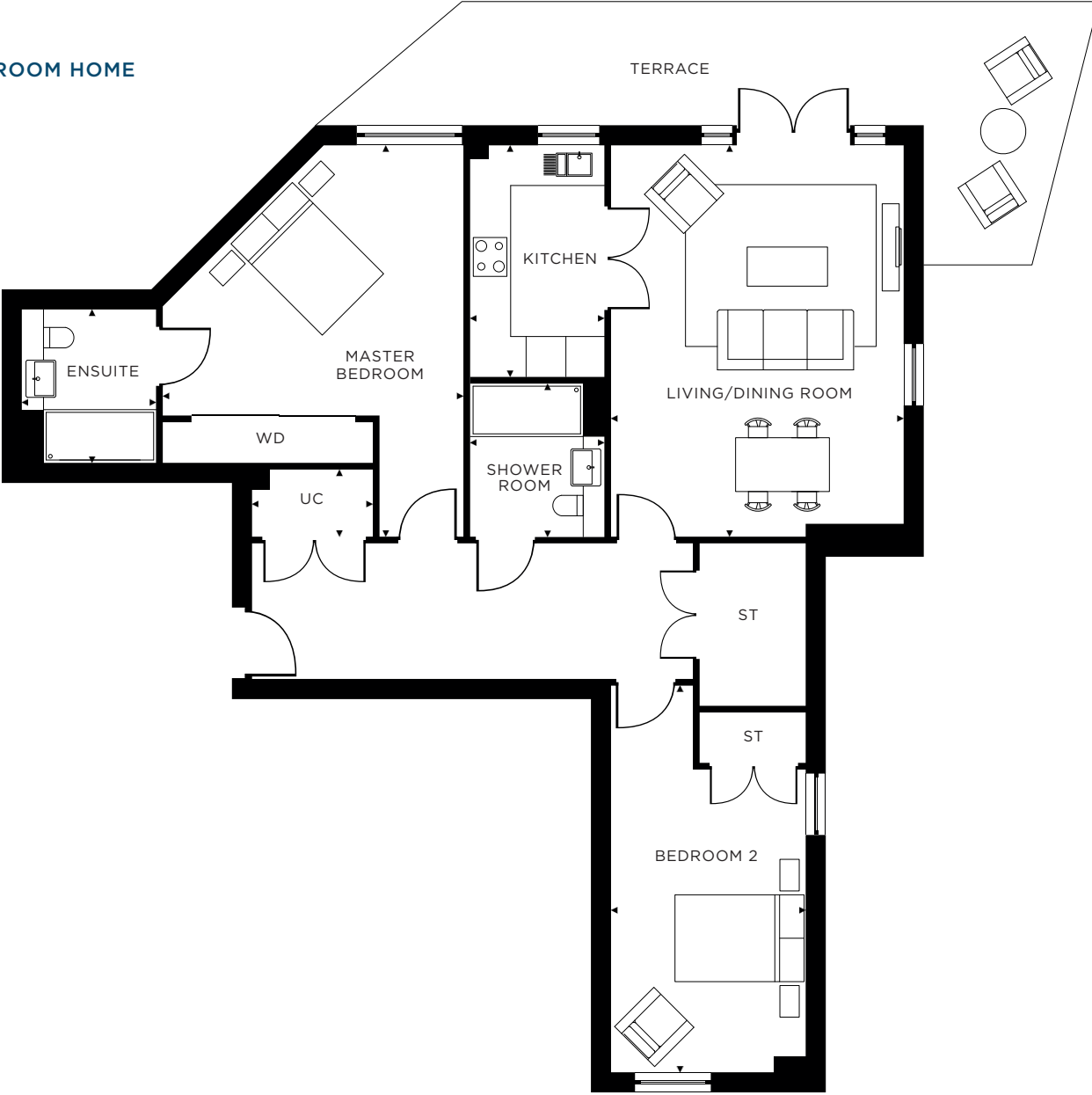
TOTAL AREA 61.38 M² 660.7 FT²



APARTMENT 8
GROUND FLOOR



2 BEDROOM HOME



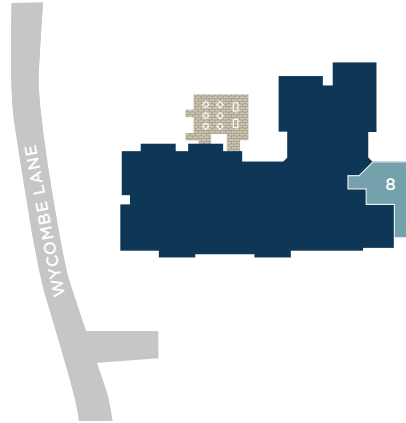
DIMENSIONS

KITCHEN		UTILITY CUPBOARD	
2.00M X 3.45M	6'7" X 11'4"	1.80M X 1.00M	5'10" X 3'3"
LIVING/DINING ROOM		SHOWER ROOM	
4.36M X 5.84M	14'4" X 19'2"	2.28M X 2.00M	7'5" X 6'6"
MASTER BEDROOM		ENSUITE	
4.48M X 4.07M	14'8" X 13'4"	2.85M X 2.00M	9'4" X 6'6"
BEDROOM 2			
2.93M X 4.51M	9'7" X 14'10"		

KEY

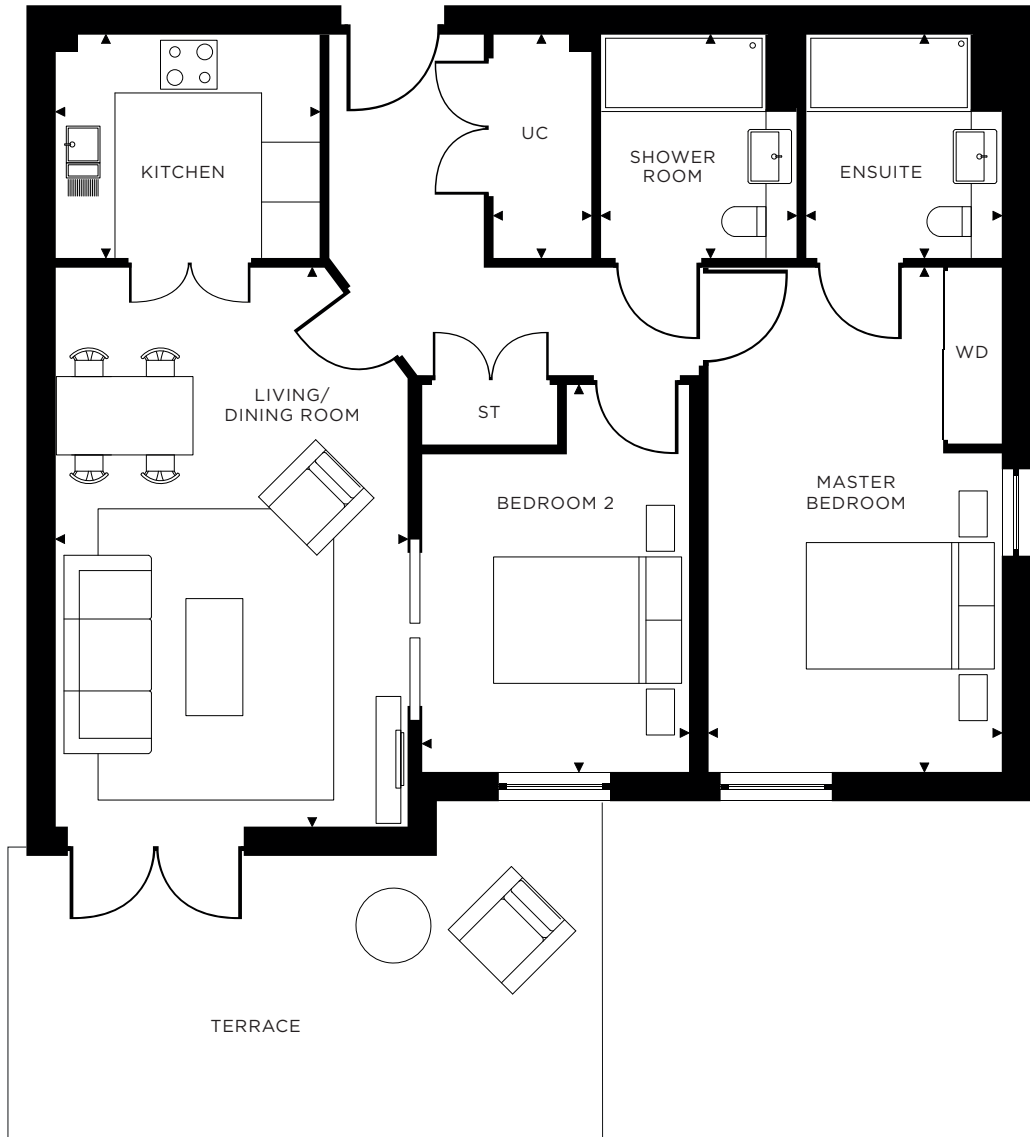
ST	STORE
WD	WARDROBE
UC	UTILITY CUPBOARD

TOTAL AREA 99.49 M² 1070.9 FT²



APARTMENT 9
GROUND FLOOR

2 BEDROOM HOME



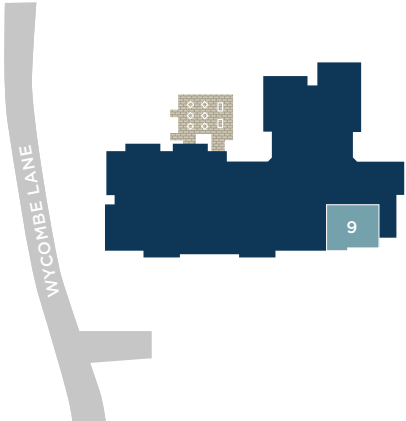
DIMENSIONS

KITCHEN		UTILITY CUPBOARD	
2.29M X 2.71M	7'6" X 8'11"	1.00M X 2.38M	3'3" X 7'9"
LIVING/DINING ROOM		SHOWER ROOM	
3.62M X 5.73M	11'11" X 18'9"	2.00M X 2.28M	6'10" X 7'9"
MASTER BEDROOM		ENSUITE	
3.00M X 5.17M	9'10" X 16'11"	2.00M X 2.38M	6'10" X 7'9"
BEDROOM 2			
2.73M X 3.30M	8'11" X 10'10"		

KEY

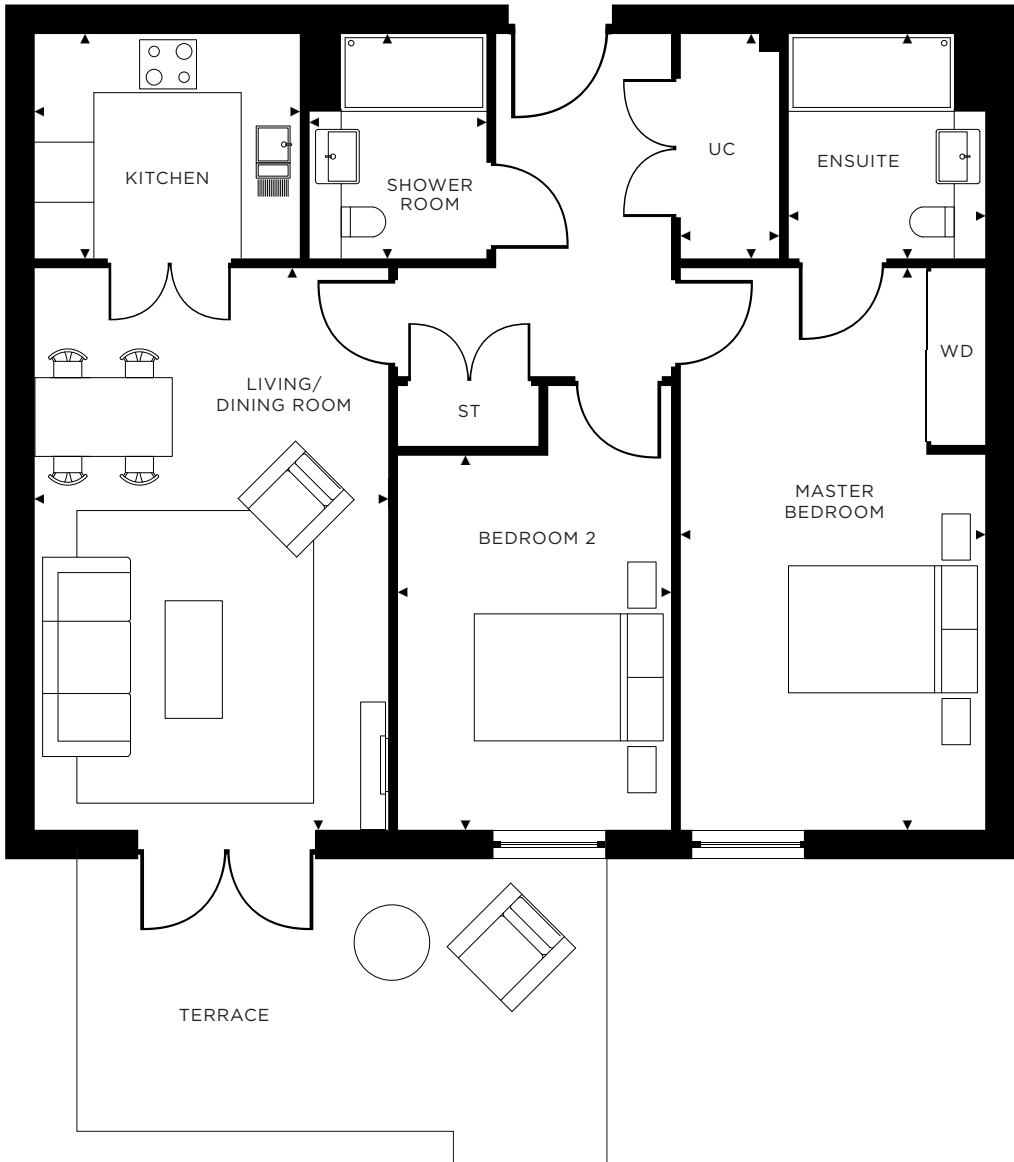
ST	STORE
WD	WARDROBE
UC	UTILITY CUPBOARD

TOTAL AREA 74.62 M² 803.2 FT²



APARTMENT 10
GROUND FLOOR

2 BEDROOM HOME



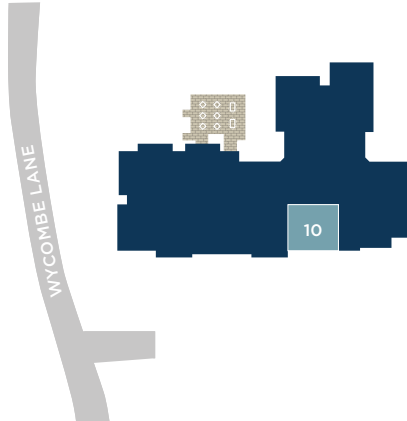
DIMENSIONS

KITCHEN		UTILITY CUPBOARD	
2.29M X 2.71M	7'6" X 8'11"	2.28M X 1.00M	7'6" X 3'3"
LIVING/DINING ROOM		SHOWER ROOM	
3.56M X 5.73M	11'8" X 18'9"	2.28M X 1.80M	7'6" X 5'10"
MASTER BEDROOM		ENSUITE	
3.01M X 5.73M	9'10" X 18'10"	2.28M X 2.00M	7'5" X 6'6"
BEDROOM 2			
2.74M X 3.88M	8'12" X 12'9"		

KEY

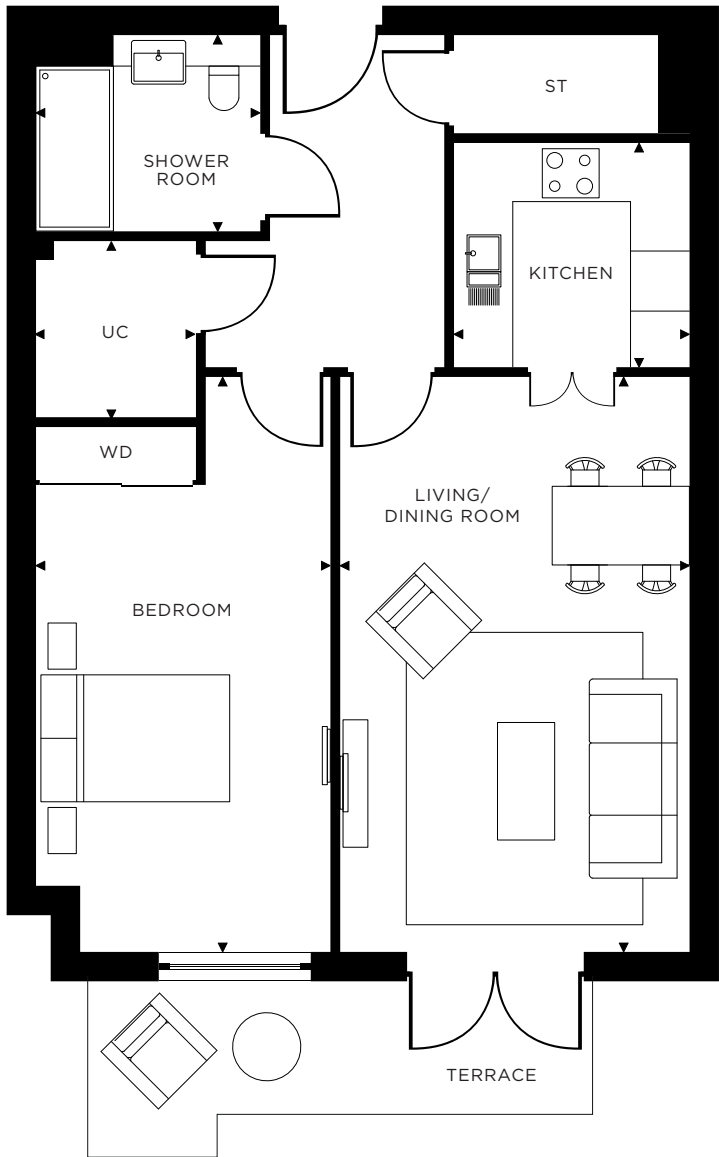
ST	STORE
WD	WARDROBE
UC	UTILITY CUPBOARD

TOTAL AREA 78.32 M² 843.0 FT²



APARTMENT 11
GROUND FLOOR

1 BEDROOM HOME



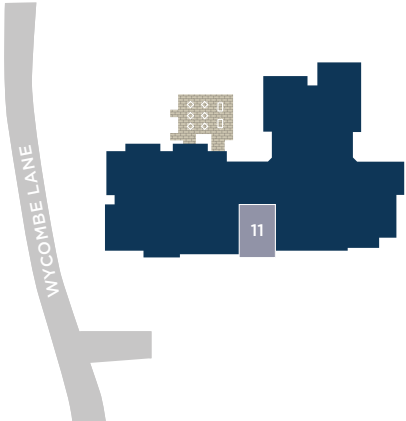
DIMENSIONS

KITCHEN		UTILITY CUPBOARD	
2.40M X 2.29M	7'10" X 7'6"	1.63M X 1.80M	5'4" X 5'10"
LIVING/DINING ROOM		SHOWER ROOM	
3.51M X 5.91M	11'6" X 19'5"	2.28M X 2.00M	7'5" X 6'6"
BEDROOM			
2.90M X 5.35M	9'6" X 17'7"		

KEY

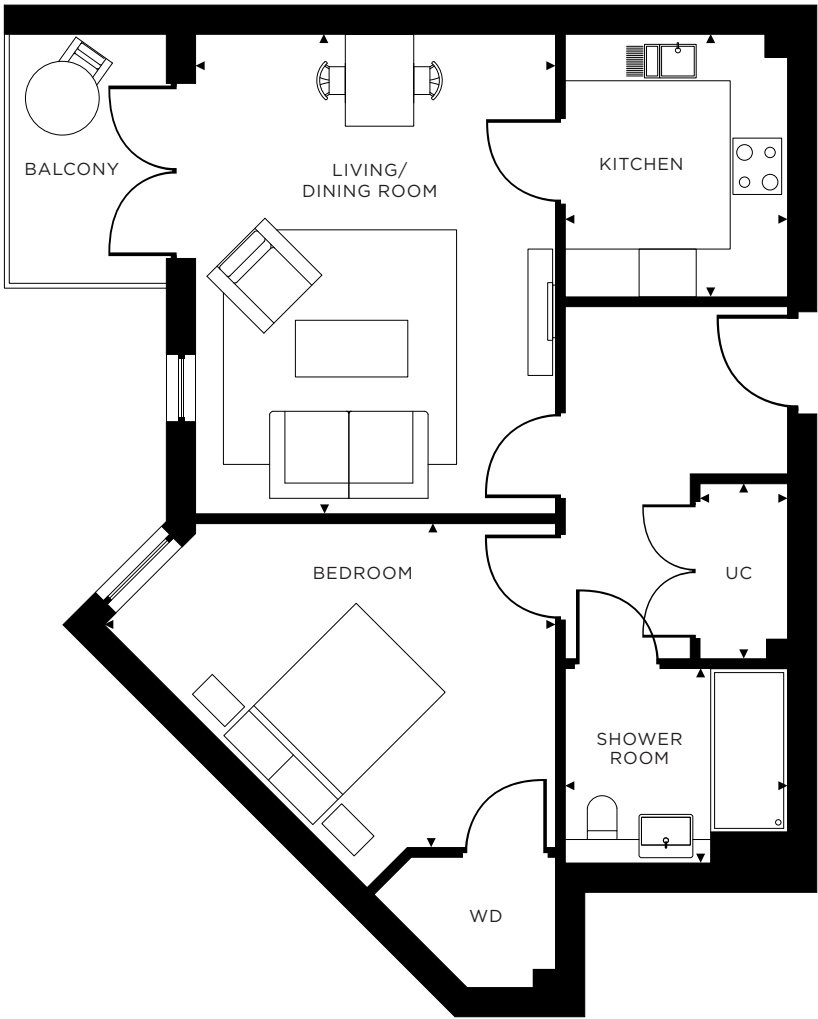
ST	STORE
WD	WARDROBE
UC	UTILITY CUPBOARD

TOTAL AREA 60.68 M² 653.2 FT²



APARTMENT 12
FIRST FLOOR

1 BEDROOM HOME



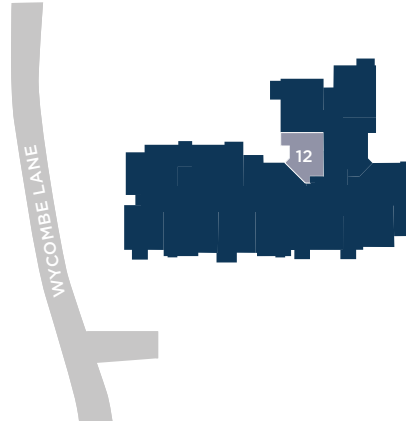
DIMENSIONS

KITCHEN		UTILITY CUPBOARD	
2.29M X 2.71M	7'6" X 8'11"	0.90M X 1.80M	2'11" X 5'10"
LIVING/DINING ROOM		SHOWER ROOM	
3.70M X 4.93M	12'2" X 16'2"	2.28M X 2.00M	7'5" X 6'6"
BEDROOM			
3.70M X 3.33M	12'2" X 10'11"		

KEY

ST	STORE
WD	WARDROBE
UC	UTILITY CUPBOARD

TOTAL AREA 53.59 M² 576.8 FT²



APARTMENT 13
FIRST FLOOR

2 BEDROOM HOME



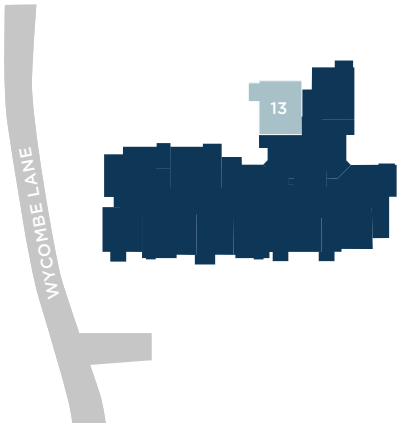
DIMENSIONS

KITCHEN		UTILITY CUPBOARD	
2.29M X 2.71M	7'6" X 8'11"	1.00M X 1.80M	3'3" X 5'10"
LIVING/DINING ROOM		SHOWER ROOM	
3.72M X 5.39M	12'2" X 17'8"	1.61M X 2.28M	5'3" X 7'5"
MASTER BEDROOM		ENSUITE	
3.16M X 5.39M	10'4" X 17'8"	2.00M X 2.28M	6'6" X 7'5"
BEDROOM 2			
2.79M X 3.52M	9'2" X 11'7"		

KEY

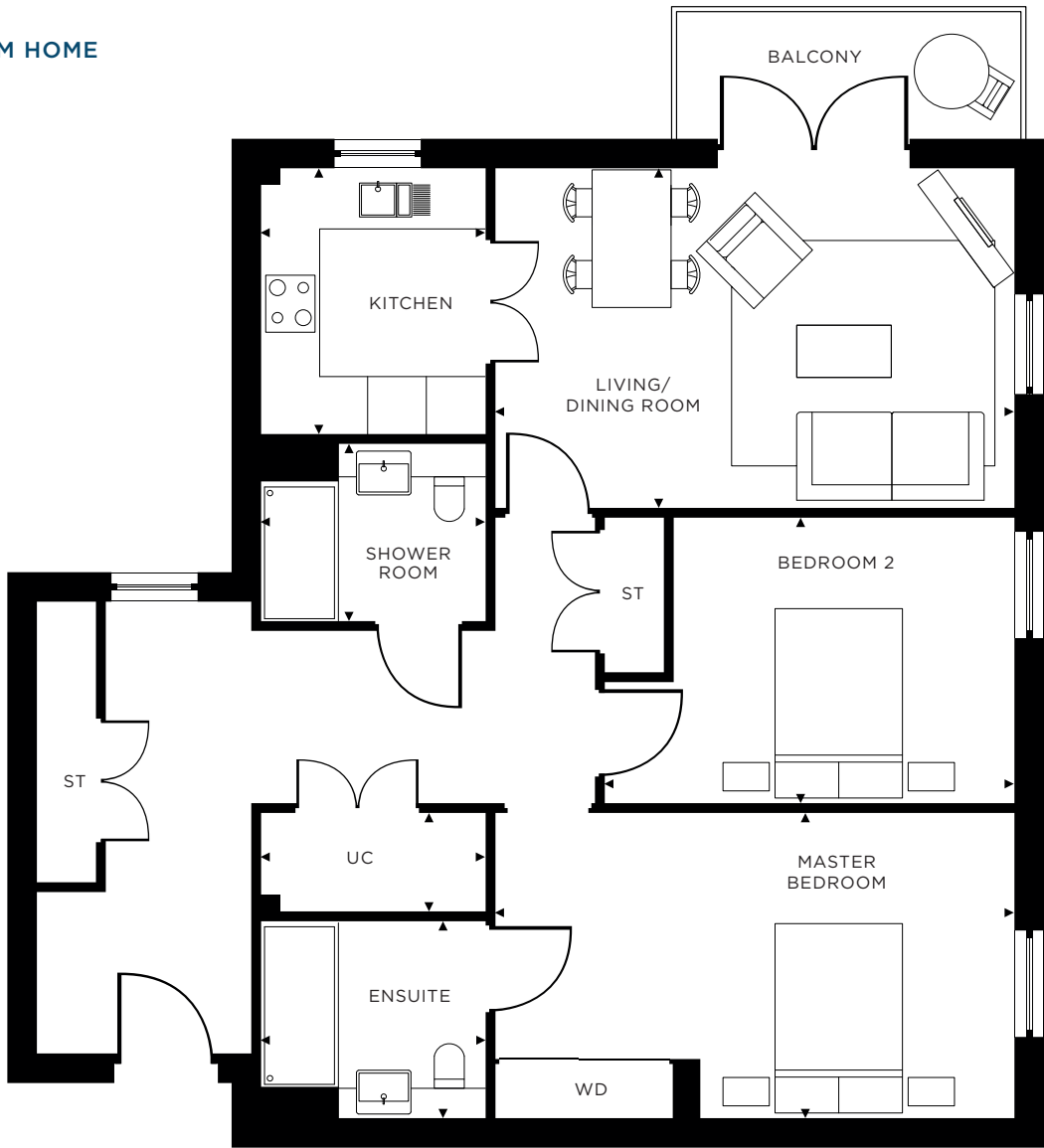
ST	STORE
WD	WARDROBE
UC	UTILITY CUPBOARD

TOTAL AREA 77.07 M² 829.6 FT²



APARTMENT 14
FIRST FLOOR

2 BEDROOM HOME



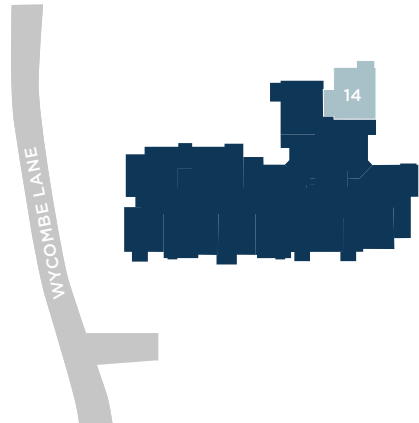
DIMENSIONS

KITCHEN		UTILITY CUPBOARD	
2.29M X 2.71M	7'6" X 8'11"	2.28M X 1.00M	7'6" X 3'3"
LIVING/DINING ROOM		SHOWER ROOM	
3.46M X 5.28M	11'4" X 17'4"	2.28M X 1.80M	7'6" X 5'10"
MASTER BEDROOM		ENSUITE	
3.10M X 5.28M	10'2" X 17'4"	2.28M X 2.00M	7'5" X 6'6"
BEDROOM 2			
2.91M X 3.47M	9'7" X 11'4"		

KEY

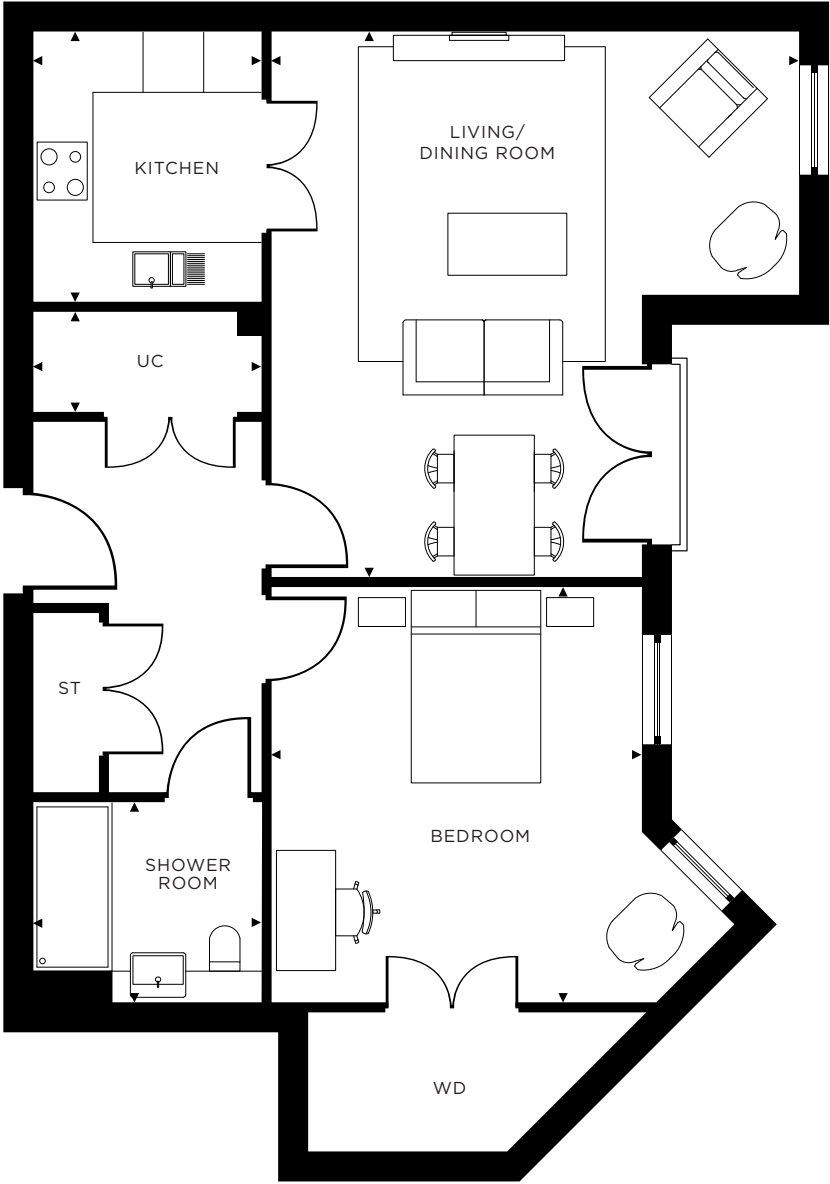
ST	STORE
WD	WARDROBE
UC	UTILITY CUPBOARD

TOTAL AREA 84.53 M² 909.9 FT²



APARTMENT 15
FIRST FLOOR

1 BEDROOM HOME



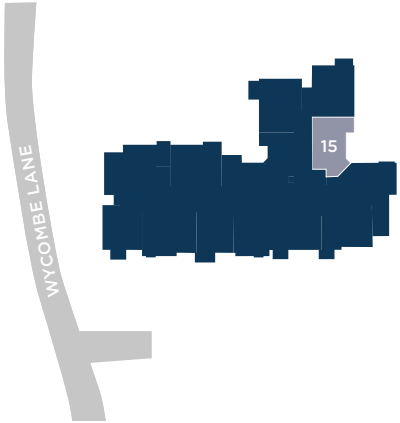
DIMENSIONS

KITCHEN		UTILITY CUPBOARD	
2.29M X 2.71M	7'6" X 8'11"	2.28M X 1.00M	7'5" X 3'3"
LIVING/DINING ROOM		SHOWER ROOM	
5.28M X 5.46M	17'4" X 17'11"	2.28M X 2.00M	7'5" X 6'6"
BEDROOM			
3.70M X 4.15M	12'2" X 13'7"		

KEY

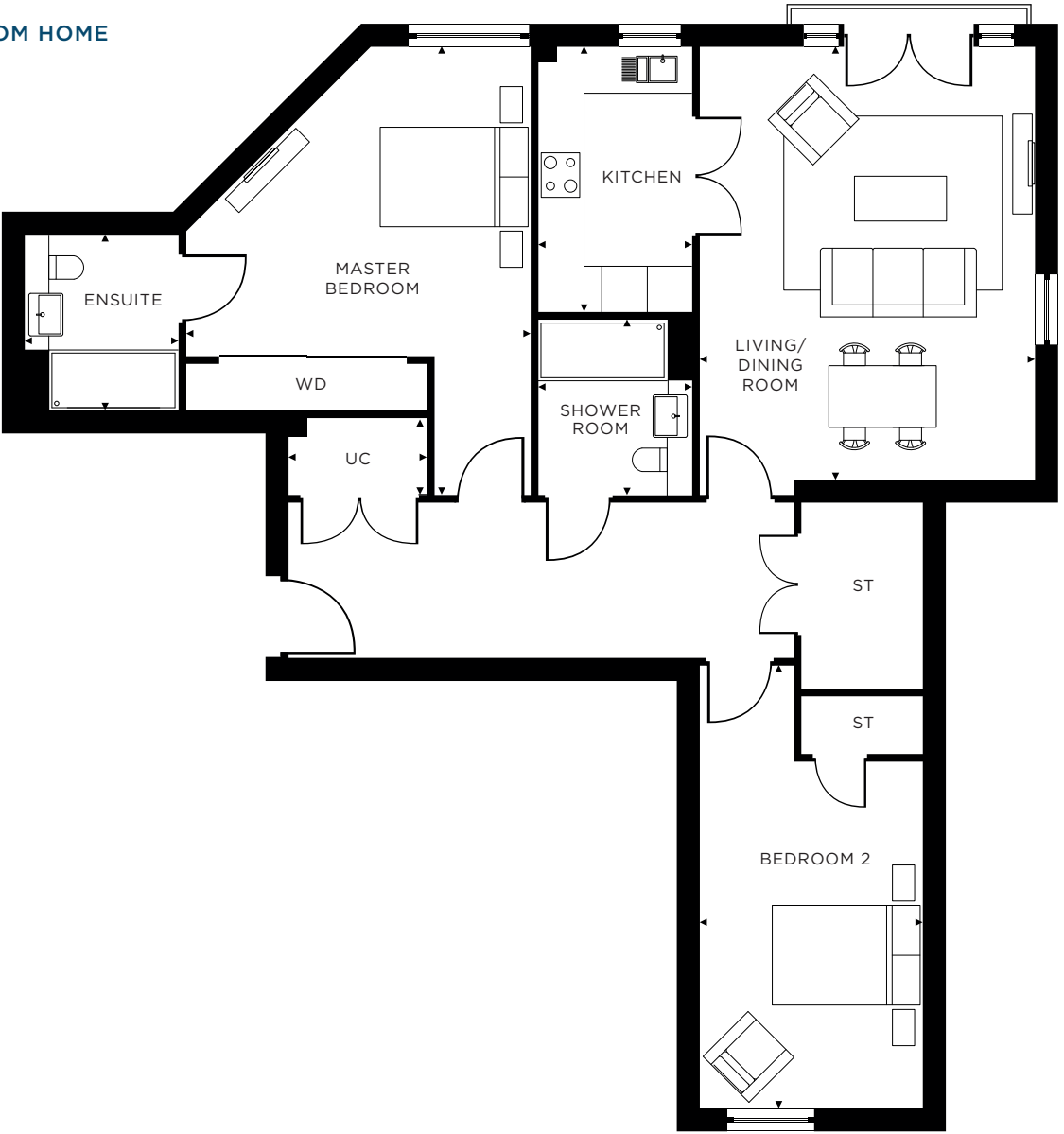
ST	STORE
WD	WARDROBE
UC	UTILITY CUPBOARD

TOTAL AREA 67.97 M² 731.6 FT²



APARTMENT 16
FIRST FLOOR

2 BEDROOM HOME



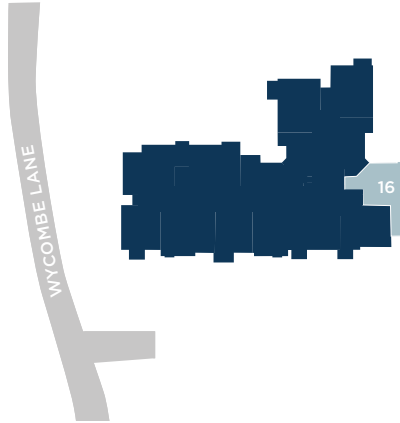
DIMENSIONS

KITCHEN		UTILITY CUPBOARD	
2.00M X 3.45M	6'7" X 11'4"	1.80M X 1.00M	5'10" X 3'3"
LIVING/DINING ROOM		SHOWER ROOM	
4.36M X 5.64M	14'4" X 18'6"	2.28M X 2.00M	7'5" X 6'6"
MASTER BEDROOM		ENSUITE	
4.03M X 4.48M	13'3" X 14'8"	2.85M X 2.00M	9'4" X 6'6"
BEDROOM 2			
2.93M X 4.51M	9'7" X 14'10"		

KEY

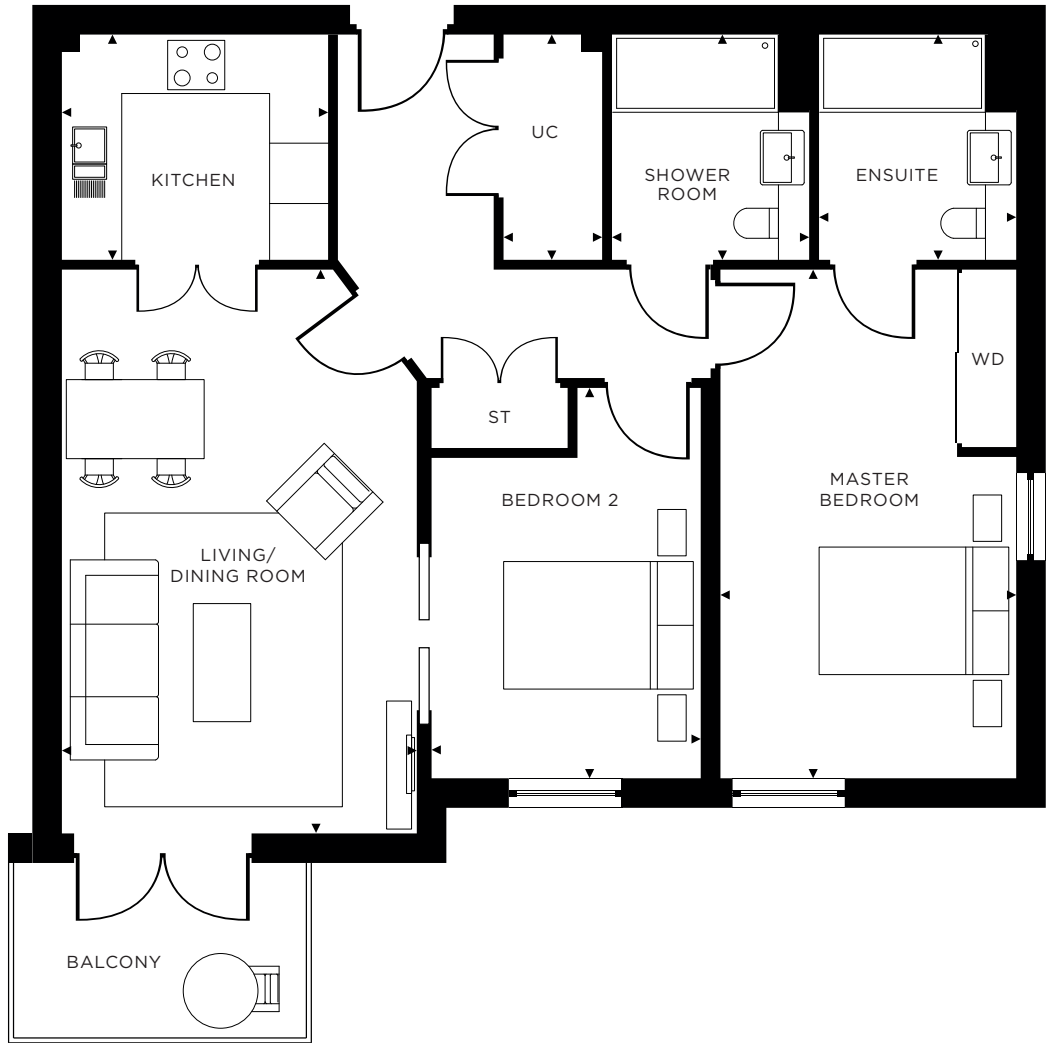
ST	STORE
WD	WARDROBE
UC	UTILITY CUPBOARD

TOTAL AREA 99.50 M² 1071 FT²



APARTMENT 17
FIRST FLOOR

2 BEDROOM HOME



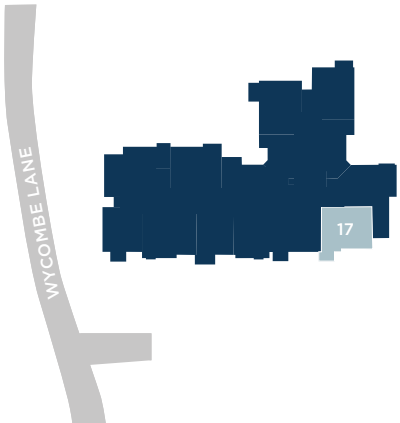
DIMENSIONS

KITCHEN		UTILITY CUPBOARD	
2.29M X 2.71M	7'6" X 8'11"	1.00M X 2.38M	3'3" X 7'9"
LIVING/DINING ROOM		SHOWER ROOM	
3.62M X 5.73M	11'11" X 18'9"	2.00M X 2.28M	6'10" X 7'9"
MASTER BEDROOM		ENSUITE	
3.00M X 5.17M	9'10" X 16'11"	2.00M X 2.38M	6'10" X 7'9"
BEDROOM 2			
2.73M X 3.30M	8'11" X 10'10"		

KEY

ST	STORE
WD	WARDROBE
UC	UTILITY CUPBOARD

TOTAL AREA 75.25 M² 810.0 FT²



APARTMENT 18
FIRST FLOOR

2 BEDROOM HOME



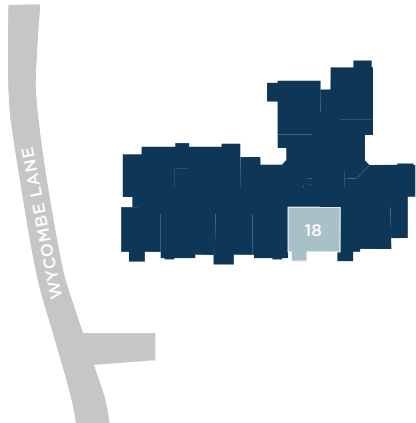
DIMENSIONS

KITCHEN		UTILITY CUPBOARD	
2.29M X 2.71M	7'6" X 8'11"	2.28M X 1.00M	7'6" X 3'3"
LIVING/DINING ROOM		SHOWER ROOM	
3.56M X 5.73M	11'8" X 18'9"	2.28M X 1.80M	7'6" X 5'10"
MASTER BEDROOM		ENSUITE	
3.01M X 5.73M	9'10" X 18'10"	2.28M X 2.00M	7'5" X 6'6"
BEDROOM 2			
2.74M X 3.88M	8'12" X 12'9"		

KEY

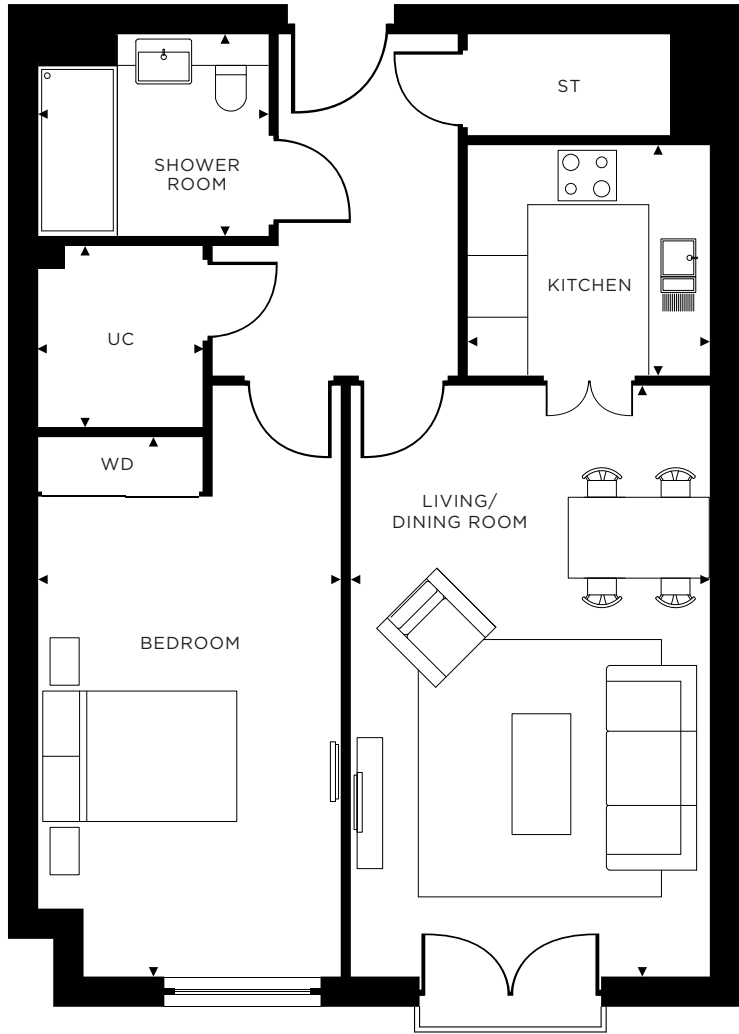
ST	STORE
WD	WARDROBE
UC	UTILITY CUPBOARD

TOTAL AREA 78.35 M² 843.4 FT²



APARTMENT 19
FIRST FLOOR

1 BEDROOM HOME



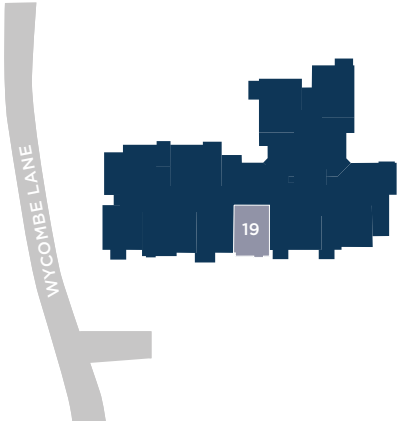
DIMENSIONS

KITCHEN		UTILITY CUPBOARD	
2.40M X 2.29M	7'10" X 7'6"	1.63M X 1.80M	5'4" X 5'10"
LIVING/DINING ROOM		SHOWER ROOM	
3.51M X 5.91M	11'6" X 19'5"	2.28M X 2.00M	7'5" X 6'6"
BEDROOM			
2.90M X 5.35M	9'6" X 17'7"		

KEY

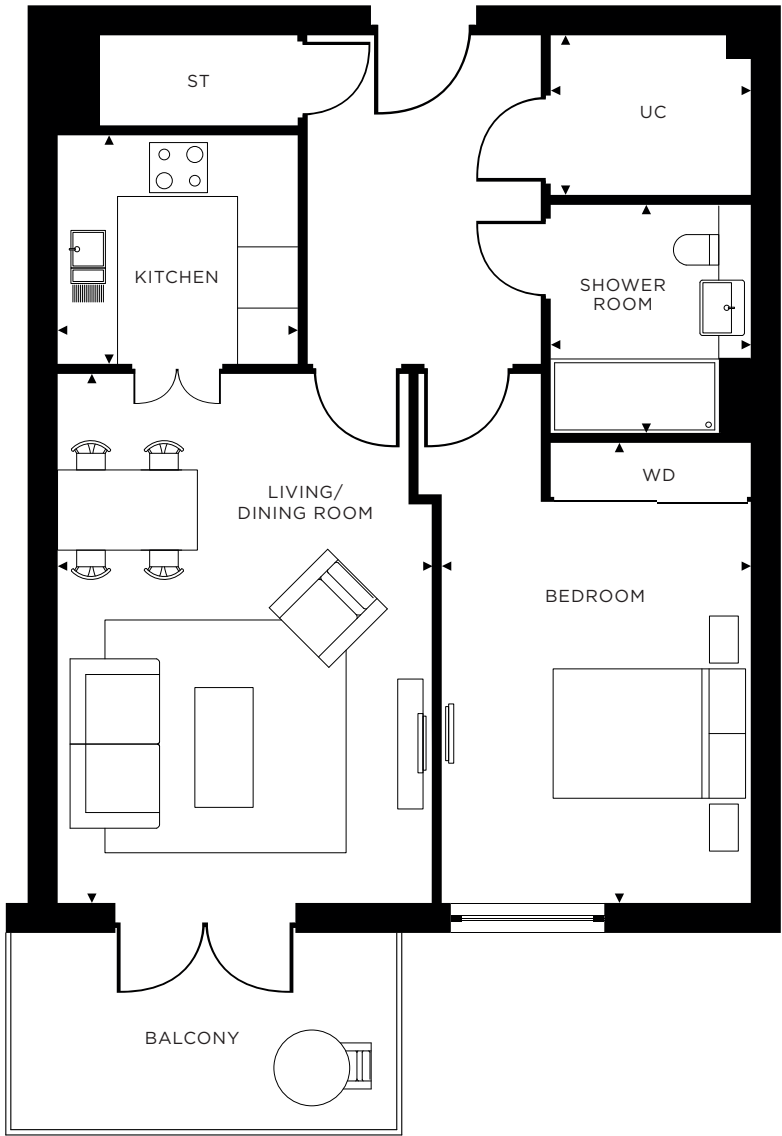
ST	STORE
WD	WARDROBE
UC	UTILITY CUPBOARD

TOTAL AREA 60.68 M² 653.2 FT²



APARTMENT 20
FIRST FLOOR

1 BEDROOM HOME



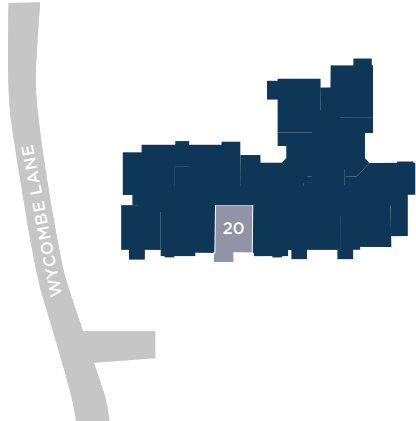
DIMENSIONS

KITCHEN		UTILITY CUPBOARD	
2.40M X 2.29M	7'10" X 7'6"	2.00M X 1.59M	6'6" X 5'2"
LIVING/DINING ROOM		SHOWER ROOM	
3.75M X 5.29M	12'3" X 17'4"	2.00M X 2.28M	6'6" X 7'5"
BEDROOM			
3.10M X 4.60M	10'2" X 15'1"		

KEY

ST	STORE
WD	WARDROBE
UC	UTILITY CUPBOARD

TOTAL AREA 60.20 M² 648.0 FT²



APARTMENT 21
FIRST FLOOR

2 BEDROOM HOME



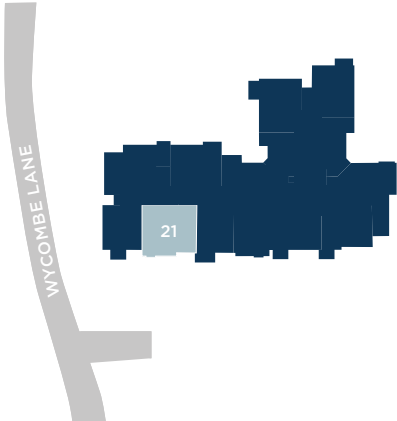
DIMENSIONS

KITCHEN		UTILITY CUPBOARD	
2.29M X 2.71M	7'6" X 8'11"	1.00M X 2.28M	3'3" X 7'5"
LIVING/DINING ROOM		SHOWER ROOM	
3.79M X 6.97M	12'5" X 22'10"	1.80M X 2.28M	5'10" X 7'5"
MASTER BEDROOM		ENSUITE	
2.95M X 5.06M	9'8" X 16'7"	2.00M X 2.28M	6'6" X 7'5"
BEDROOM 2			
3.49M X 6.29M	11'5" X 20'8"		

KEY

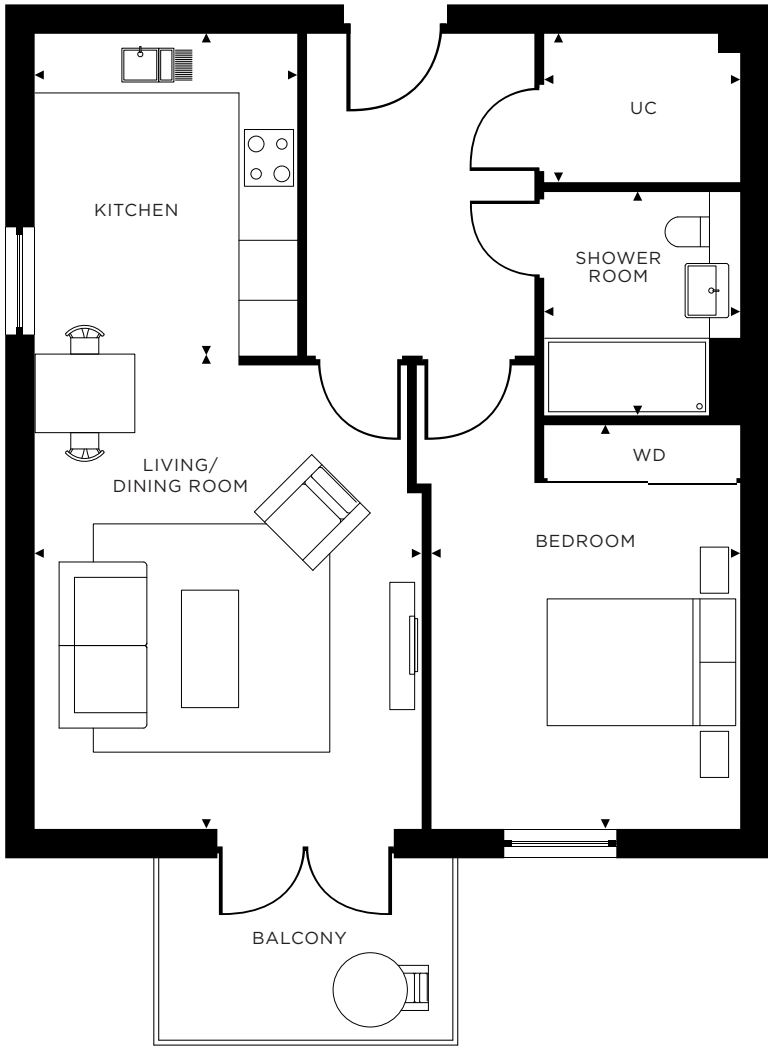
ST	STORE
WD	WARDROBE
UC	UTILITY CUPBOARD

TOTAL AREA 95.51 M² 1028.1 FT²



APARTMENT 22
FIRST FLOOR

1 BEDROOM HOME



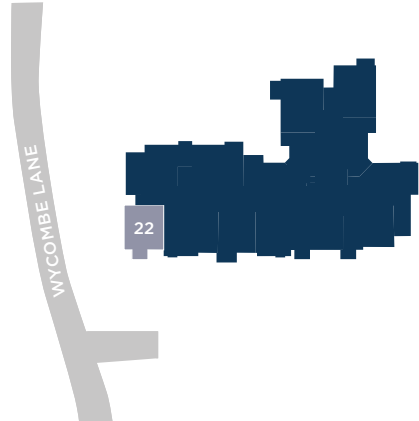
DIMENSIONS

KITCHEN		UTILITY CUPBOARD	
2.69M X 3.30M	8'10" X 10'10"	2.00M X 1.50M	6'6" X 4'11"
LIVING/DINING ROOM		SHOWER ROOM	
3.95M X 4.73M	12'12" X 15'6"	2.00M X 2.28M	6'6" X 7'5"
BEDROOM			
3.15M X 4.13M	10'4" X 13'6"		

KEY

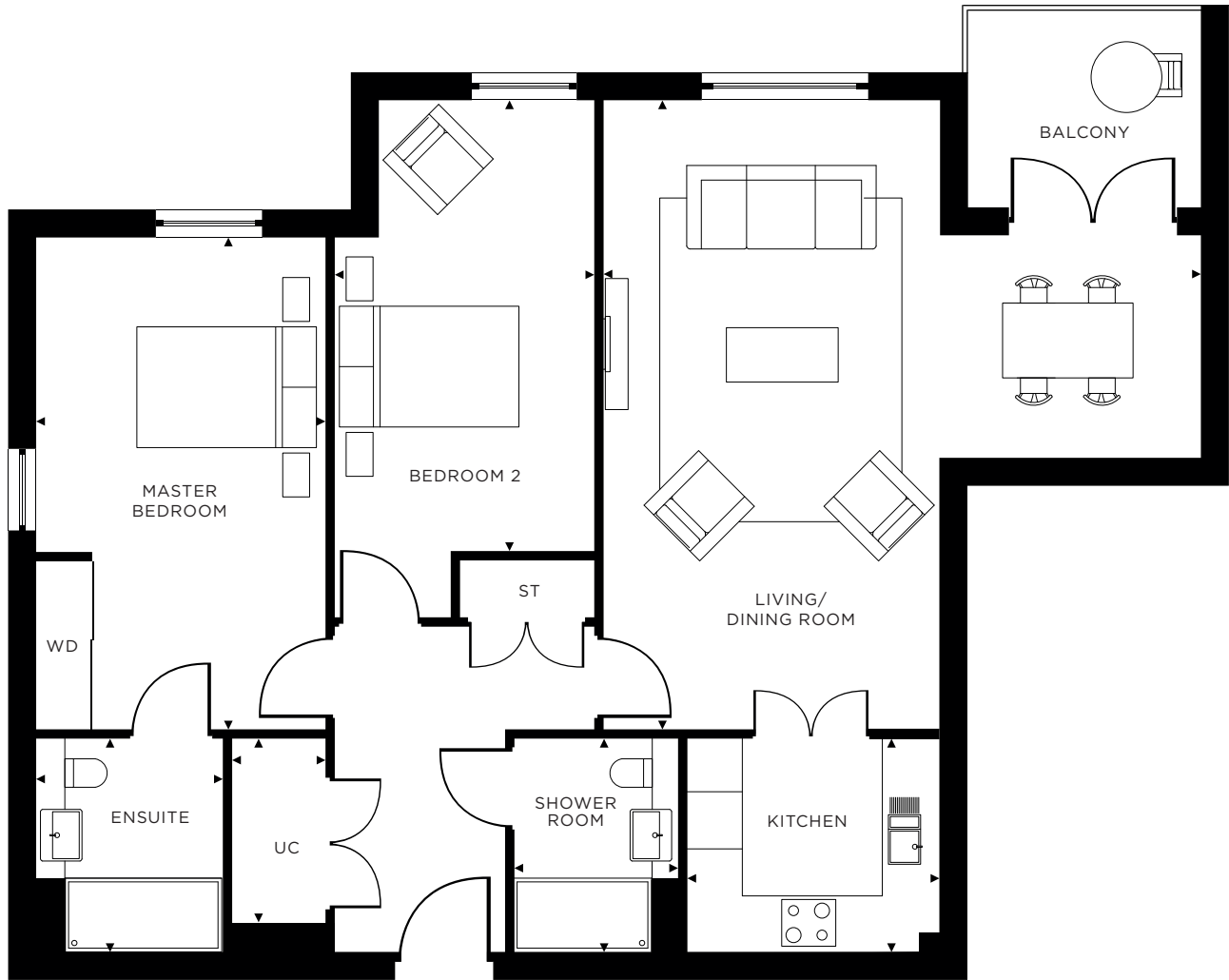
WD	WARDROBE
UC	UTILITY CUPBOARD

TOTAL AREA 58.43 M² 628.9 FT²



APARTMENT 23
FIRST FLOOR

2 BEDROOM HOME



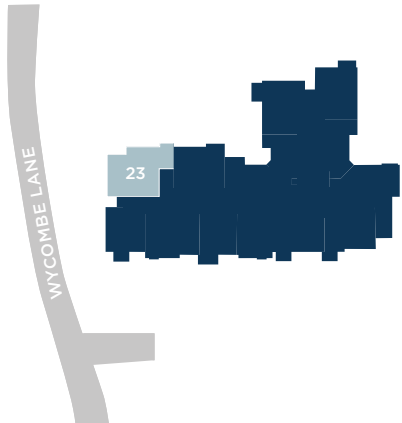
DIMENSIONS

KITCHEN		UTILITY CUPBOARD	
2.29M X 2.71M	7'6" X 8'11"	1.00M X 2.38M	3'3" X 7'9"
LIVING/DINING ROOM		SHOWER ROOM	
3.60M X 6.74M	11'10" X 22'1"	1.80M X 2.28M	5'10" X 7'6"
MASTER BEDROOM		ENSUITE	
3.10M X 5.28M	10'2" X 17'4"	2.00M X 2.38M	6'6" X 7'9"
BEDROOM 2			
2.79M X 4.83M	9'2" X 15'10"		

KEY

ST	STORE
WD	WARDROBE
UC	UTILITY CUPBOARD

TOTAL AREA 89.67 M² 965.2 FT²



APARTMENT 24
FIRST FLOOR

2 BEDROOM HOME



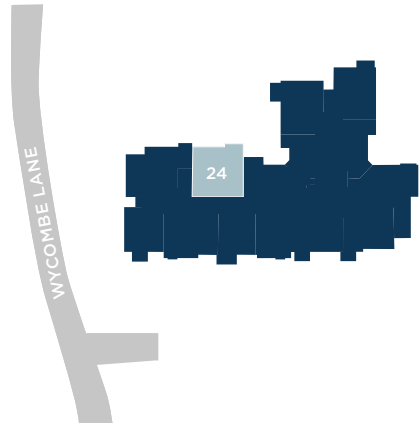
DIMENSIONS

KITCHEN		UTILITY CUPBOARD	
2.29M X 2.71M	7'6" X 8'11"	1.00M X 2.28M	3'3" X 7'5"
LIVING/DINING ROOM		SHOWER ROOM	
3.71M X 5.28M	12'2" X 17'4"	1.80M X 2.28M	5'10" X 7'5"
MASTER BEDROOM		ENSUITE	
3.01M X 6.74M	9'11" X 22'1"	2.00M X 2.28M	6'6" X 7'5"
BEDROOM 2			
2.77M X 4.84M	9'1" X 15'11"		

KEY

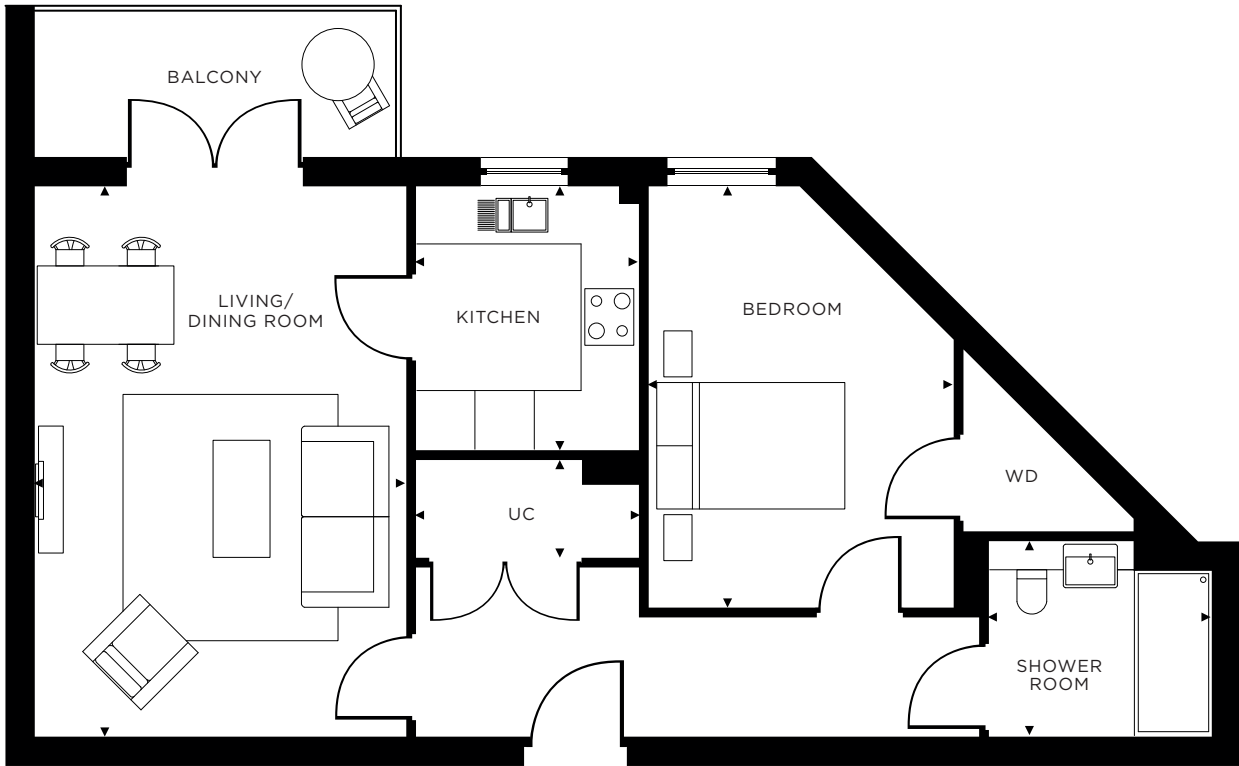
ST	STORE
WD	WARDROBE
UC	UTILITY CUPBOARD

TOTAL AREA 82.97 M² 893.1 FT²



APARTMENT 25
FIRST FLOOR

1 BEDROOM HOME



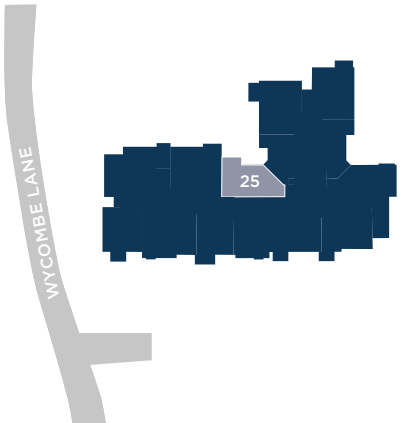
DIMENSIONS

KITCHEN		UTILITY CUPBOARD	
2.29M X 2.71M	7'6" X 8'11"	2.28M X 1.00M	7'5" X 3'3"
LIVING/DINING ROOM		SHOWER ROOM	
3.80M X 5.64M	12'6" X 18'6"	2.28M X 2.00M	7'5" X 6'6"
BEDROOM			
3.12M X 4.31M	10'3" X 14'2"		

KEY

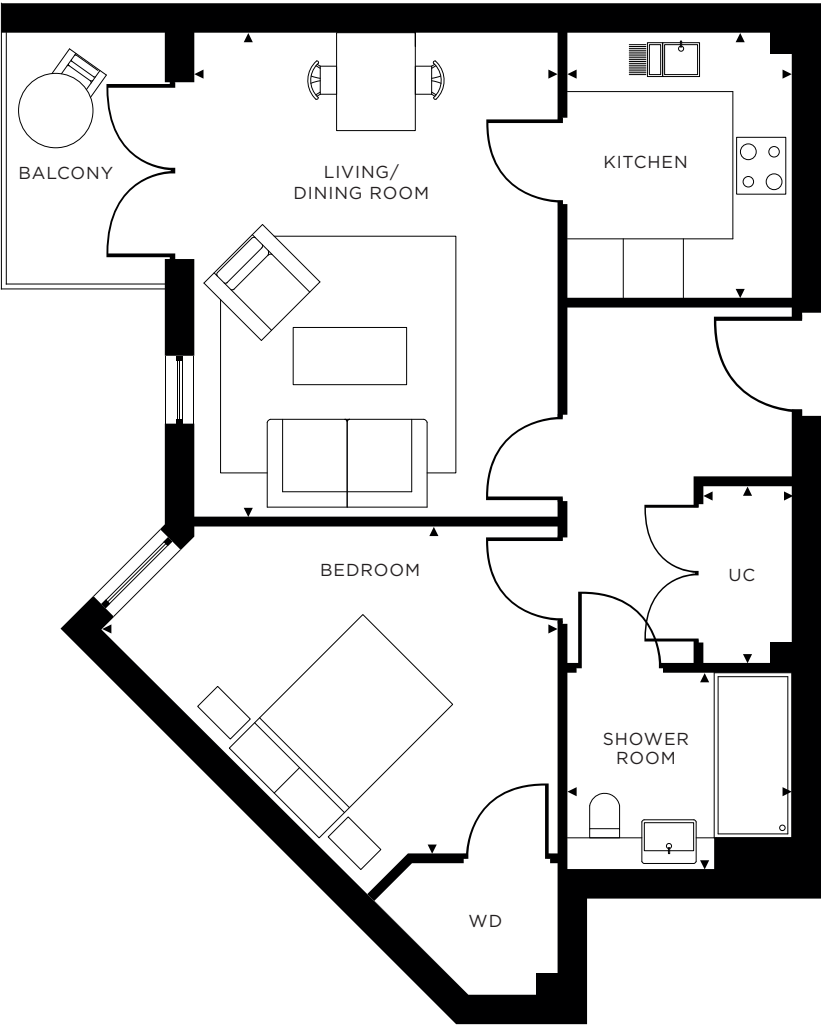
WD	WARDROBE
UC	UTILITY CUPBOARD

TOTAL AREA 59.08 M² 635.9 FT²



APARTMENT 26
SECOND FLOOR

1 BEDROOM HOME



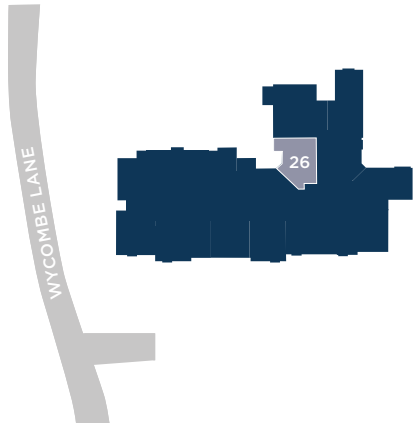
DIMENSIONS

KITCHEN		UTILITY CUPBOARD	
2.29M X 2.71M	7'6" X 8'11"	0.90M X 1.80M	2'11" X 5'10"
LIVING/DINING ROOM		SHOWER ROOM	
3.70M X 4.93M	12'2" X 16'2"	2.28M X 2.00M	7'5" X 6'6"
BEDROOM			
3.70M X 3.33M	12'2" X 10'11"		

KEY

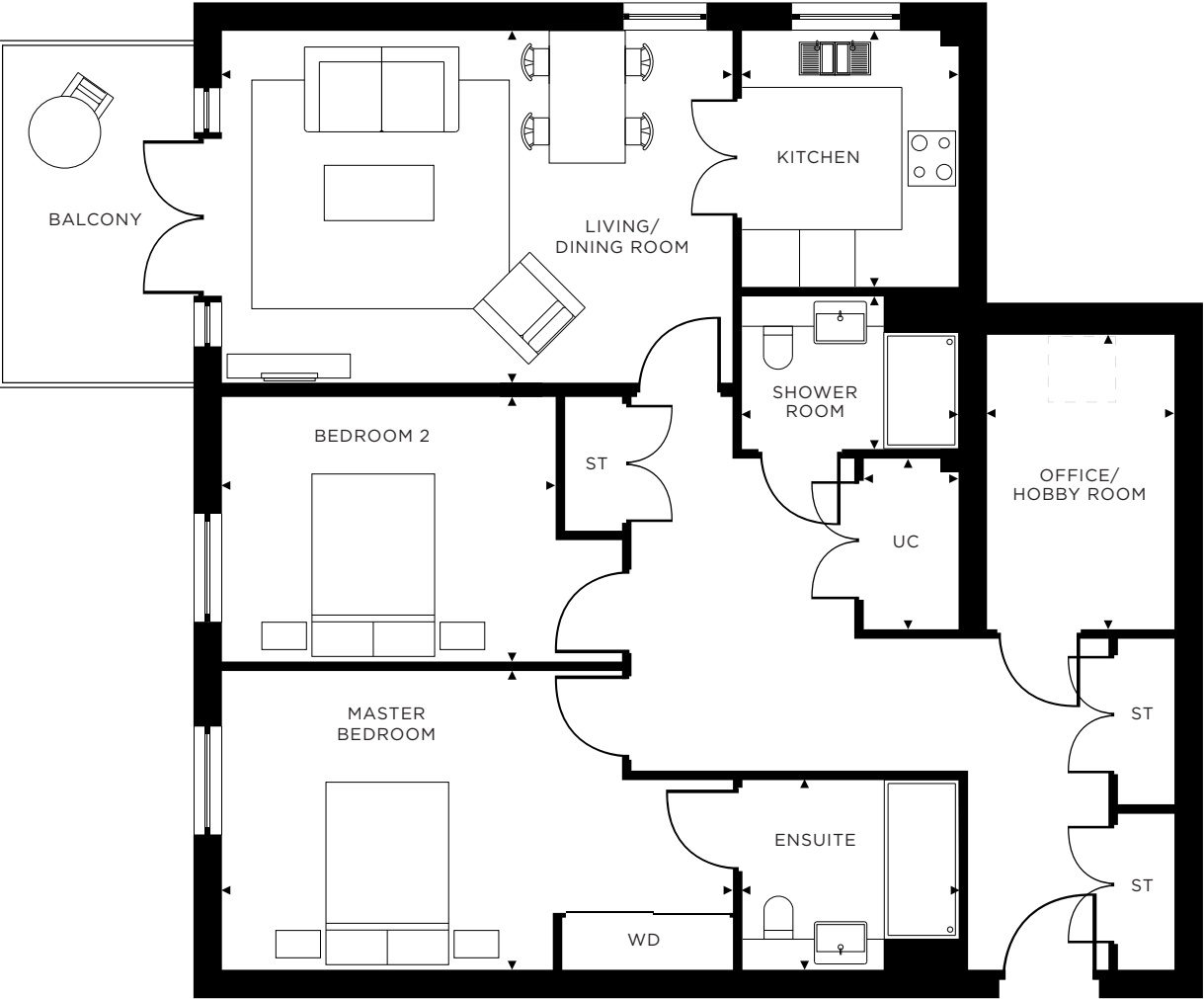
WD	WARDROBE
UC	UTILITY CUPBOARD

TOTAL AREA 53.59 M² 576.8 FT²



APARTMENT 27
SECOND FLOOR

2 BEDROOM HOME



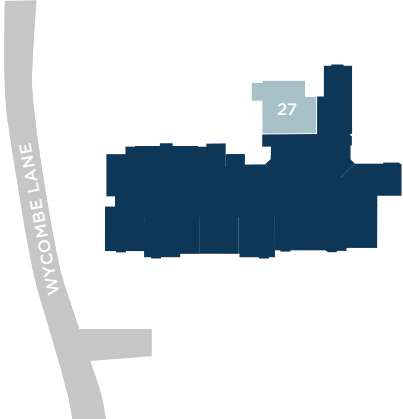
DIMENSIONS

KITCHEN		OFFICE/HOBBY ROOM	
2.29M X 2.71M	7'6" X 8'11"	1.94M X 2.94M	6'4" X 9'7"
LIVING/DINING ROOM		UTILITY CUPBOARD	
3.72M X 5.39M	12'2" X 17'8"	1.00M X 1.80M	3'3" X 5'10"
MASTER BEDROOM		SHOWER ROOM	
3.16M X 5.39M	10'4" X 17'8"	2.28M X 1.61M	7'5" X 5'3"
BEDROOM 2		ENSUITE	
2.79M X 3.52M	9'2" X 11'7"	2.28M X 2.00M	7'5" X 6'6"

KEY

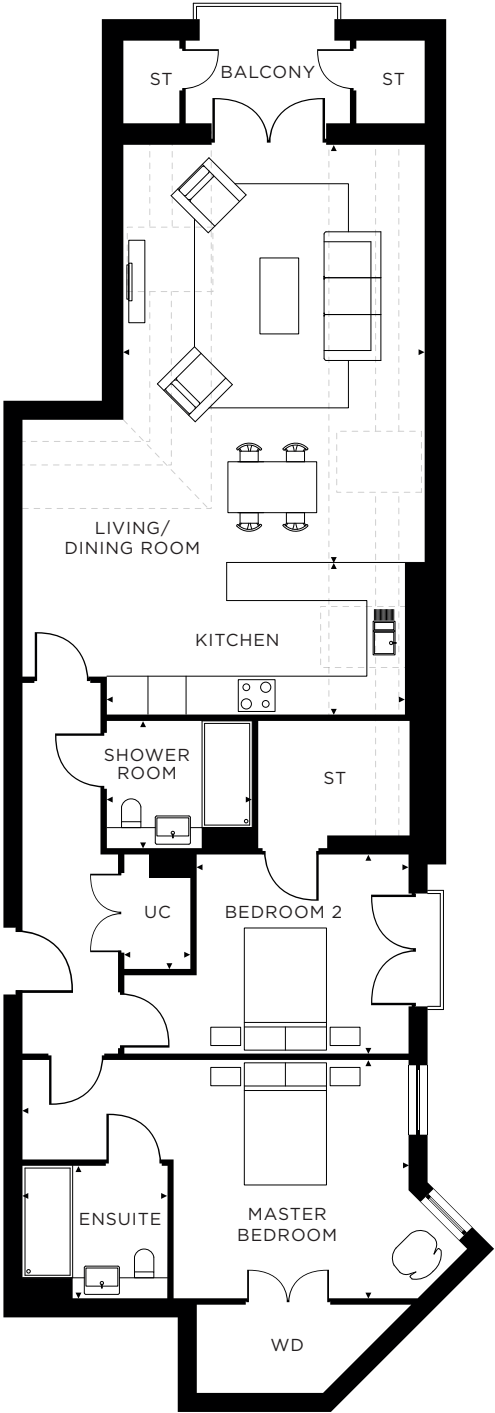
ST	STORE
WD	WARDROBE
	SKYLIGHT
UC	UTILITY CUPBOARD

TOTAL AREA 90.51 M² 974.2 FT²



APARTMENT 28
SECOND FLOOR

2 BEDROOM HOME



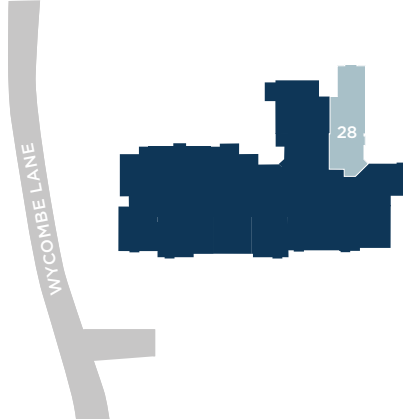
DIMENSIONS

KITCHEN		UTILITY CUPBOARD	
2.40M X 4.61M	7'10" X 15'1"	1.00M X 1.48M	3'3" X 4'10"
LIVING/DINING ROOM		SHOWER ROOM	
4.51M X 6.56M	14'10" X 21'6"	2.28M X 2.00M	7'5" X 6'6"
MASTER BEDROOM		ENSUITE	
3.66M X 6.09M	11'12" X 19'12"	2.28M X 2.00M	7'5" X 6'6"
BEDROOM 2			
3.14M X 3.39M	10'4" X 11'1"		

KEY

	REDUCED CEILING HEIGHT
ST	STORE
WD	WARDROBE
	SKYLIGHT
UC	UTILITY CUPBOARD

TOTAL AREA 101.30 M² 1090.4 FT²



APARTMENT 29
SECOND FLOOR

1 BEDROOM HOME



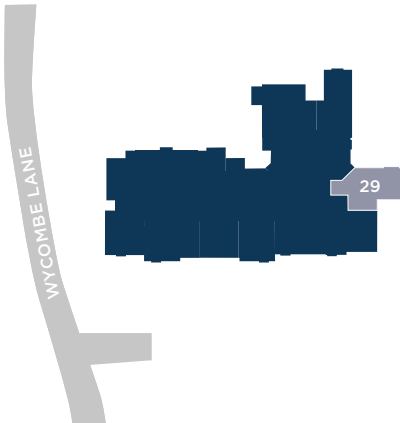
DIMENSIONS

KITCHEN		UTILITY CUPBOARD	
2.00M X 3.45M	6'7" X 11'4"	1.00M X 1.80M	3'3" X 5'10"
LIVING/DINING ROOM		WC	
4.36M X 5.64M	14'4" X 18'6"	1.64M X 1.94M	5'4" X 6'4"
BEDROOM		ENSUITE	
4.14M X 4.48M	13'7" X 14'8"	2.00M X 2.28M	6'6" X 7'5"

KEY

ST	STORE
WD	WARDROBE
UC	UTILITY CUPBOARD

TOTAL AREA 74.42 M² 801.1 FT²



APARTMENT 30
SECOND FLOOR

2 BEDROOM HOME



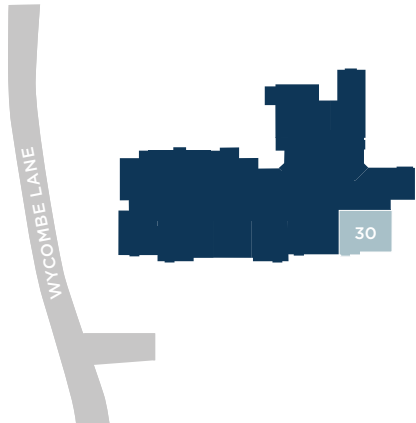
DIMENSIONS

KITCHEN		UTILITY CUPBOARD	
2.29M X 2.71M	7'6" X 8'11"	1.00M X 2.38M	3'3" X 7'9"
LIVING/DINING ROOM		SHOWER ROOM	
3.62M X 5.73M	11'11" X 18'9"	2.00M X 2.28M	6'10" X 7'9"
MASTER BEDROOM		ENSUITE	
2.78M X 3.27M	9'1" X 10'9"	2.00M X 2.38M	6'10" X 7'9"
BEDROOM 2			
3.00M X 5.17M	9'10" X 16'11"		

KEY

.....	REDUCED CEILING HEIGHT
ST	STORE
WD	WARDROBE
UC	UTILITY CUPBOARD

TOTAL AREA 73.94 M² 795.9 FT²



APARTMENT 31
SECOND FLOOR

2 BEDROOM HOME



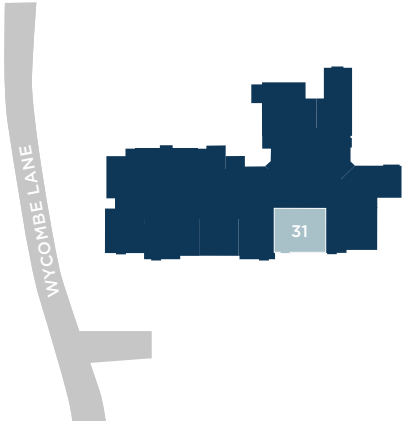
DIMENSIONS

KITCHEN		UTILITY CUPBOARD	
2.29M X 2.71M	7'6" X 8'11"	2.28M X 1.00M	7'6" X 3'3"
LIVING/DINING ROOM		SHOWER ROOM	
3.60M X 5.73M	11'10" X 18'9"	2.28M X 1.80M	7'6" X 5'10"
MASTER BEDROOM		ENSUITE	
3.01M X 5.73M	9'10" X 18'9"	2.28M X 2.00M	7'5" X 6'6"
BEDROOM 2			
2.75M X 3.88M	9'0" X 12'9"		

TOTAL AREA 77.90 M² 838.5 FT²

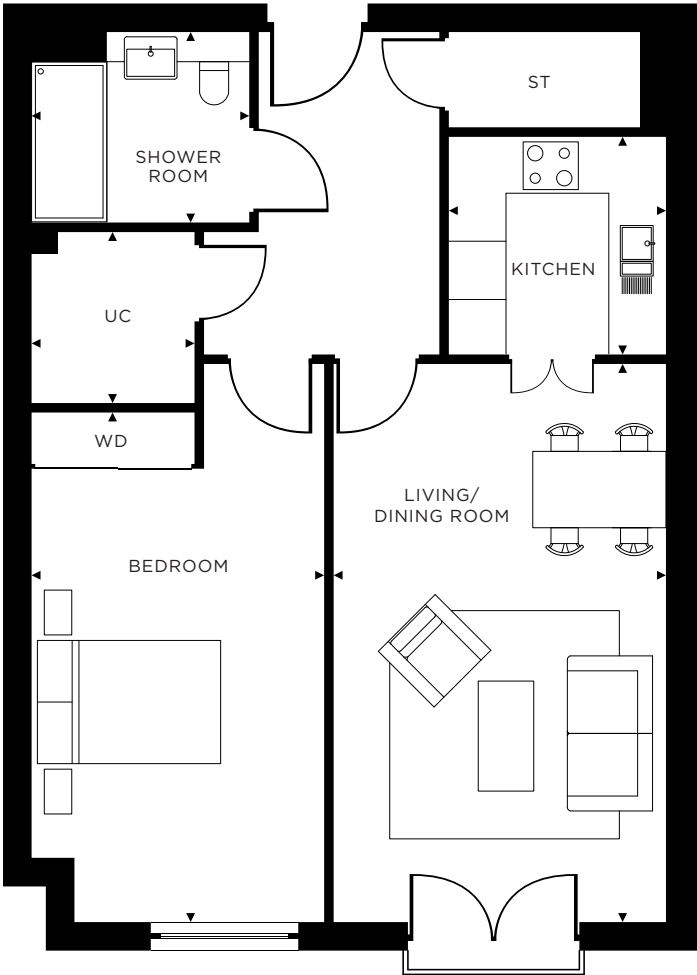
KEY

.....	REDUCED CEILING HEIGHT
ST	STORE
WD	WARDROBE
UC	UTILITY CUPBOARD



APARTMENT 32
SECOND FLOOR

1 BEDROOM HOME



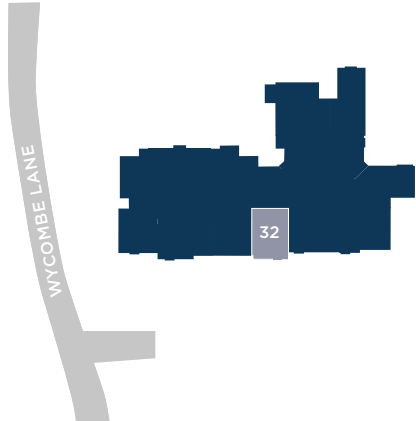
DIMENSIONS

KITCHEN		UTILITY CUPBOARD	
2.40M X 2.29M	7'10" X 7'6"	1.63M X 1.80M	5'4" X 5'10"
LIVING/DINING ROOM		SHOWER ROOM	
3.51M X 5.91M	11'6" X 19'5"	2.28M X 2.00M	7'5" X 6'6"
BEDROOM			
2.90M X 5.35M	9'6" X 17'7"		

TOTAL AREA 60.68 M² 653.2 FT²

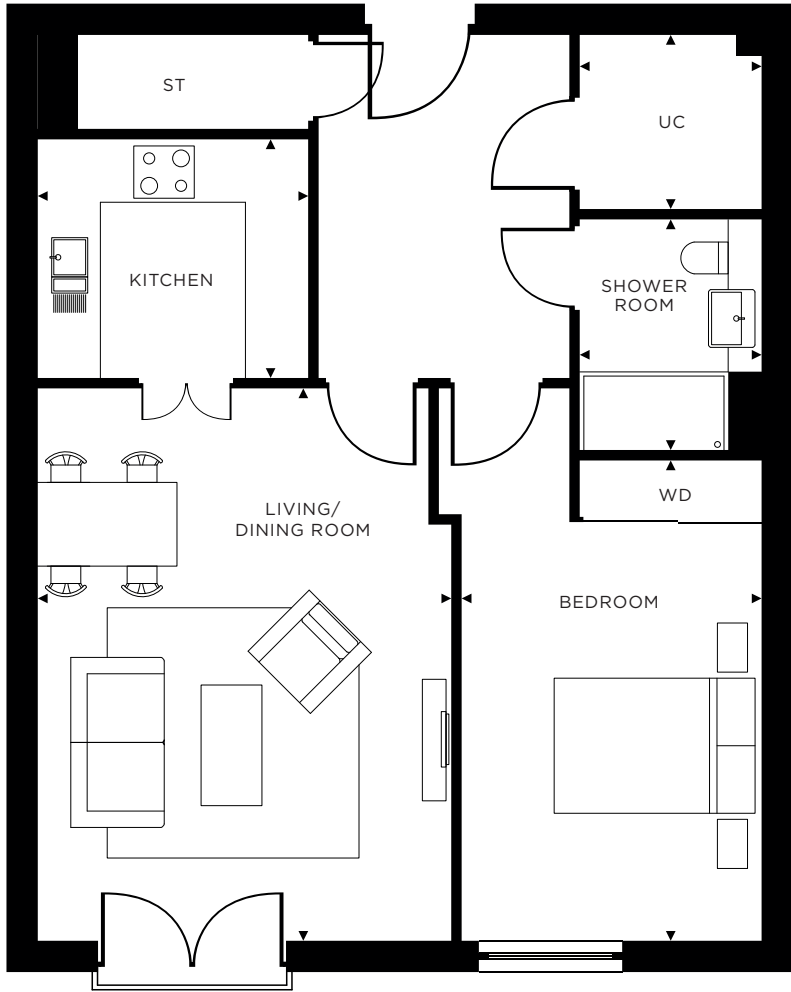
KEY

ST	STORE
WD	WARDROBE
UC	UTILITY CUPBOARD



APARTMENT 33
SECOND FLOOR

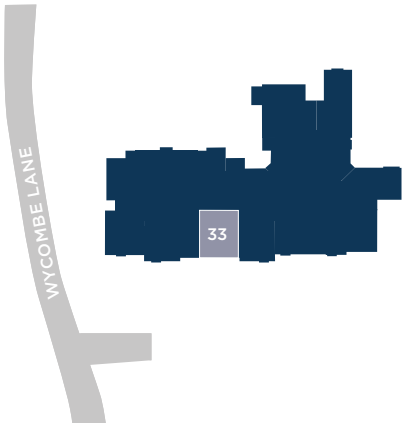
1 BEDROOM HOME



DIMENSIONS			
KITCHEN		UTILITY CUPBOARD	
2.40M X 2.29M	7'10" X 7'6"	2.00M X 1.59M	6'6" X 5'2"
LIVING/DINING ROOM		SHOWER ROOM	
3.75M X 5.29M	12'3" X 17'4"	2.00M X 2.28M	6'6" X 7'5"
BEDROOM			
3.10M X 4.60M	10'2" X 15'1"		

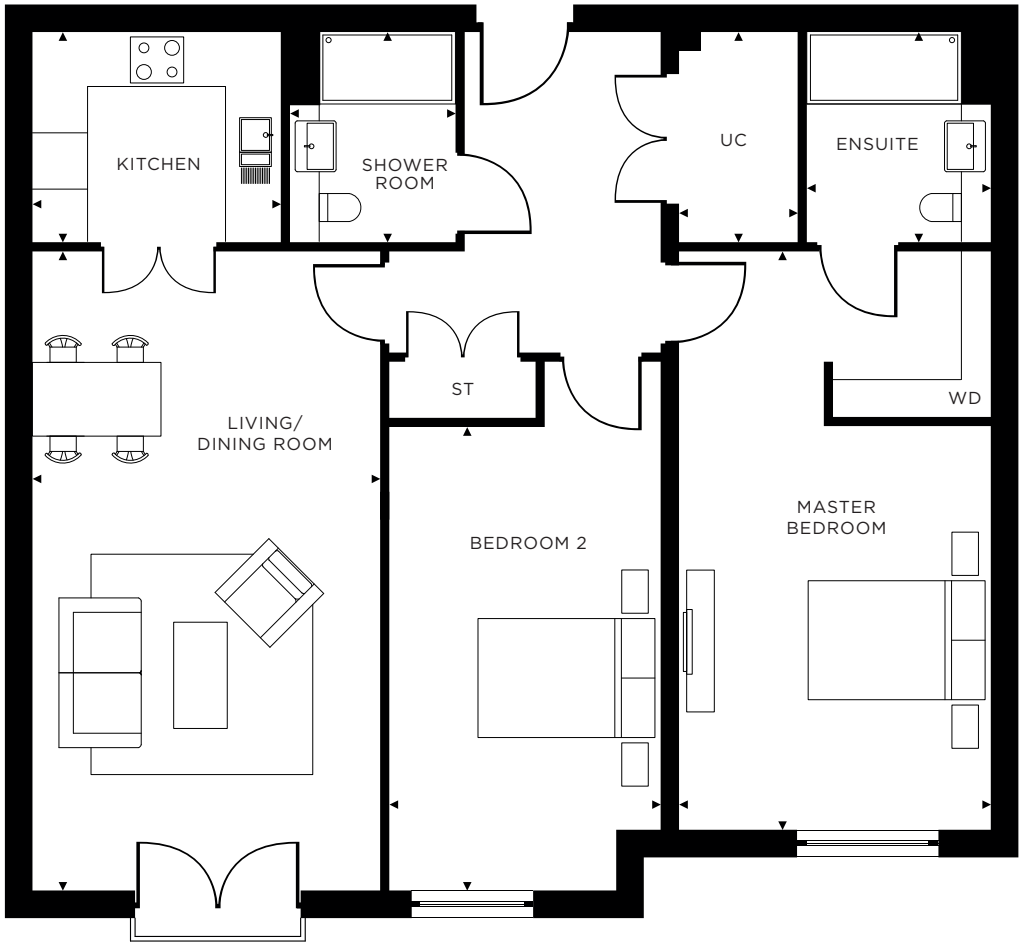
KEY	
ST	STORE
WD	WARDROBE
UC	UTILITY CUPBOARD

TOTAL AREA 60.20 M² 648.0 FT²



APARTMENT 34
SECOND FLOOR

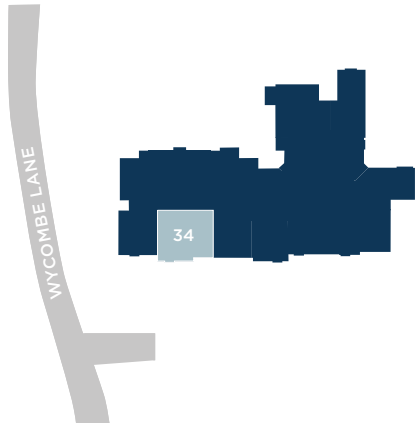
2 BEDROOM HOME



DIMENSIONS			
KITCHEN		UTILITY CUPBOARD	
2.29M X 2.71M	7'6" X 8'11"	1.00M X 2.28M	3'3" X 7'5"
LIVING/DINING ROOM		SHOWER ROOM	
3.79M X 6.97M	12'5" X 22'10"	1.80M X 2.28M	5'10" X 7'5"
MASTER BEDROOM		ENSUITE	
3.49M X 6.29M	11'5" X 20'8"	2.00M X 2.28M	6'6" X 7'5"
BEDROOM 2			
2.95M X 5.06M	9'8" X 16'7"		

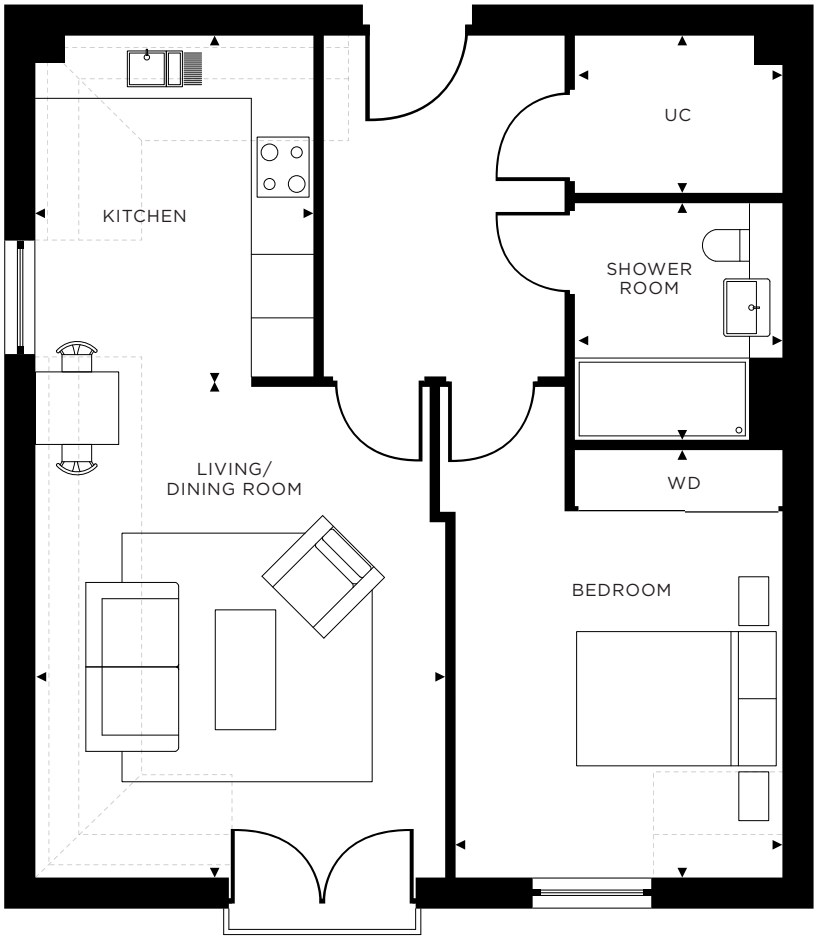
KEY	
ST	STORE
WD	WARDROBE
UC	UTILITY CUPBOARD

TOTAL AREA 95.51 M² 1028.1 FT²



APARTMENT 35
SECOND FLOOR

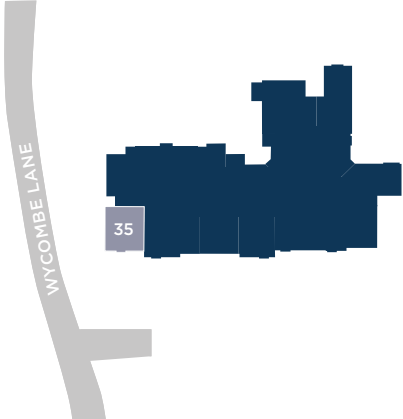
1 BEDROOM HOME



DIMENSIONS			
KITCHEN		UTILITY CUPBOARD	
2.65M X 3.30M	8'8" X 10'10"	2.00M X 1.50M	6'6" X 4'11"
LIVING/DINING ROOM		SHOWER ROOM	
3.90M X 4.73M	12'9" X 15'6"	2.00M X 2.28M	6'6" X 7'5"
BEDROOM			
3.14M X 4.13M	10'3" X 13'6"		

KEY	
.....	REDUCED CEILING HEIGHT
ST	STORE
WD	WARDROBE
UC	UTILITY CUPBOARD

TOTAL AREA 57.55 M² 619.5 FT²



APARTMENT 36
SECOND FLOOR

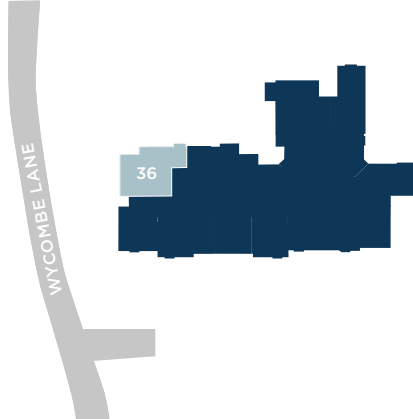
2 BEDROOM HOME



DIMENSIONS			
KITCHEN		UTILITY CUPBOARD	
2.29M X 2.71M	7'6" X 8'11"	1.00M X 1.80M	3'3" X 5'10"
LIVING/DINING ROOM		SHOWER ROOM	
3.23M X 6.74M	10'7" X 22'1"	2.28M X 1.80M	7'5" X 5'9"
MASTER BEDROOM		ENSUITE	
2.67M X 4.54M	8'9" X 14'11"	2.28M X 2.00M	7'5" X 6'6"
BEDROOM 2			
3.66M X 4.91M	12'0" X 16'1"		

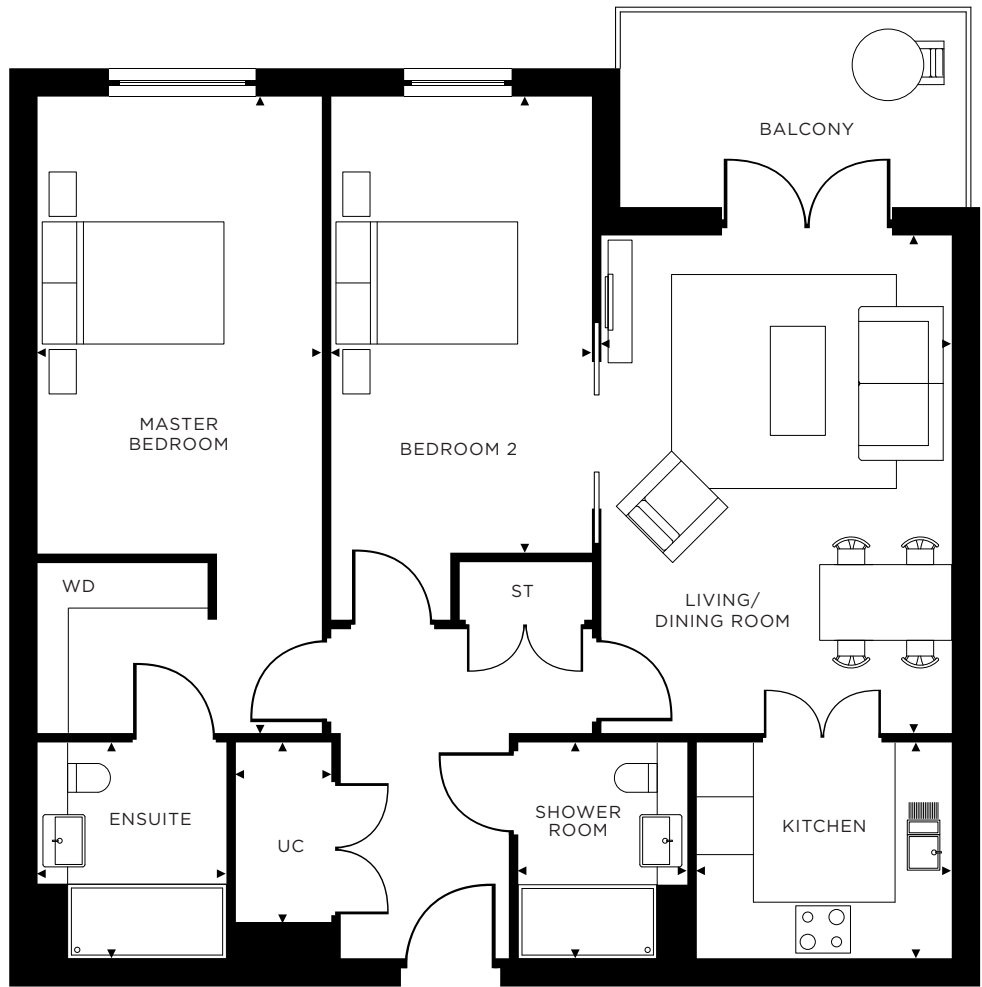
KEY	
.....	REDUCED CEILING HEIGHT
WD	WARDROBE
UC	UTILITY CUPBOARD

TOTAL AREA 88.91 M² 957.0 FT²



APARTMENT 37
SECOND FLOOR

2 BEDROOM HOME



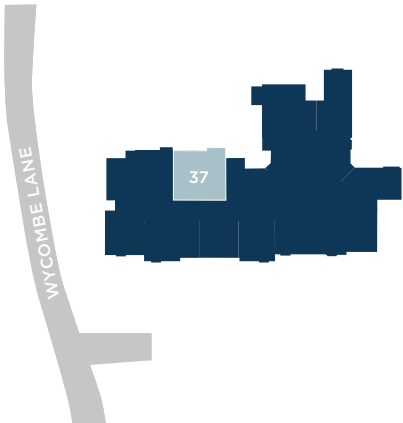
DIMENSIONS

KITCHEN		UTILITY CUPBOARD	
2.29M X 2.71M	7'6" X 8'11"	1.00M X 2.28M	3'3" X 7'5"
LIVING/DINING ROOM		SHOWER ROOM	
3.71M X 5.28M	12'2" X 17'4"	1.80M X 2.28M	5'10" X 7'5"
MASTER BEDROOM		ENSUITE	
3.01M X 6.74M	9'11" X 22'1"	2.00M X 2.28M	6'6" X 7'5"
BEDROOM 2			
2.77M X 4.84M	9'1" X 15'11"		

KEY

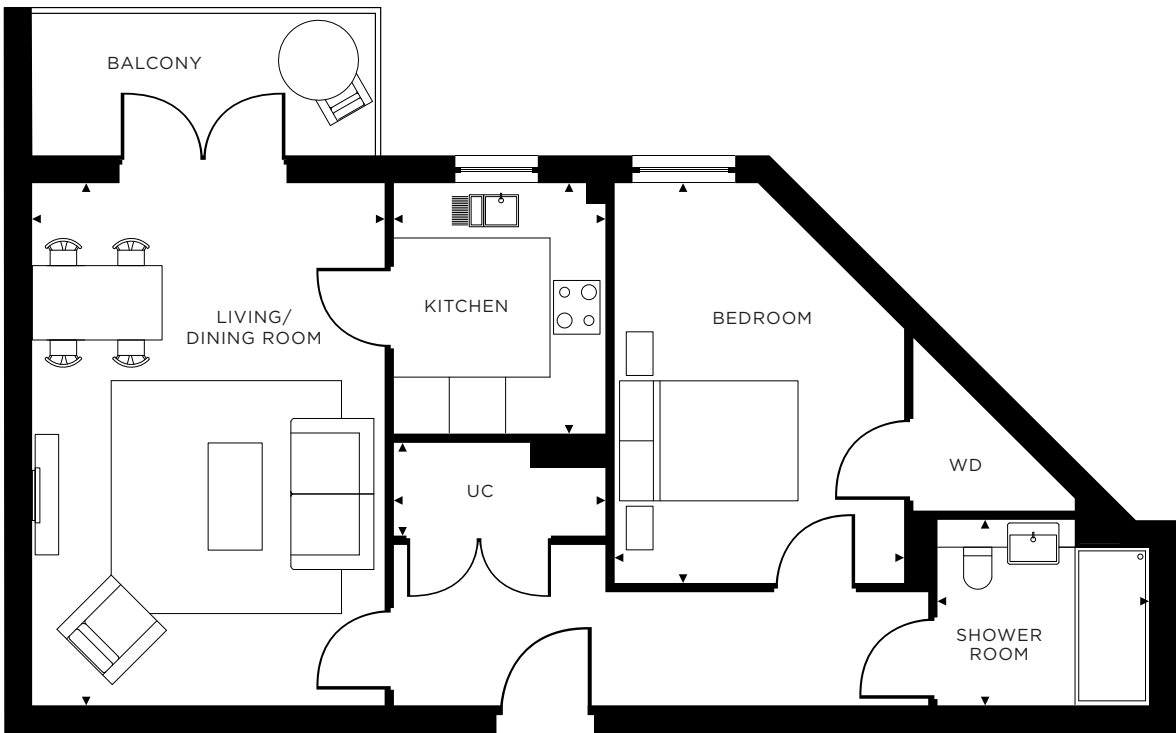
ST	STORE
WD	WARDROBE
UC	UTILITY CUPBOARD

TOTAL AREA 82.97 M² 893.1 FT²



APARTMENT 38
SECOND FLOOR

1 BEDROOM HOME



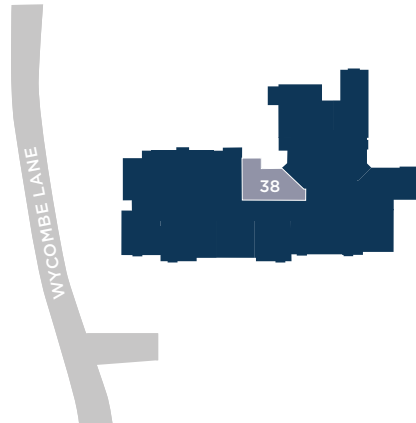
DIMENSIONS

KITCHEN		UTILITY CUPBOARD	
2.29M X 2.71M	7'6" X 8'11"	2.28M X 1.00M	7'5" X 3'3"
LIVING/DINING ROOM		SHOWER ROOM	
3.80M X 5.64M	12'6" X 18'6"	2.28M X 2.00M	7'5" X 6'6"
BEDROOM			
3.12M X 4.31M	10'3" X 14'2"		

KEY

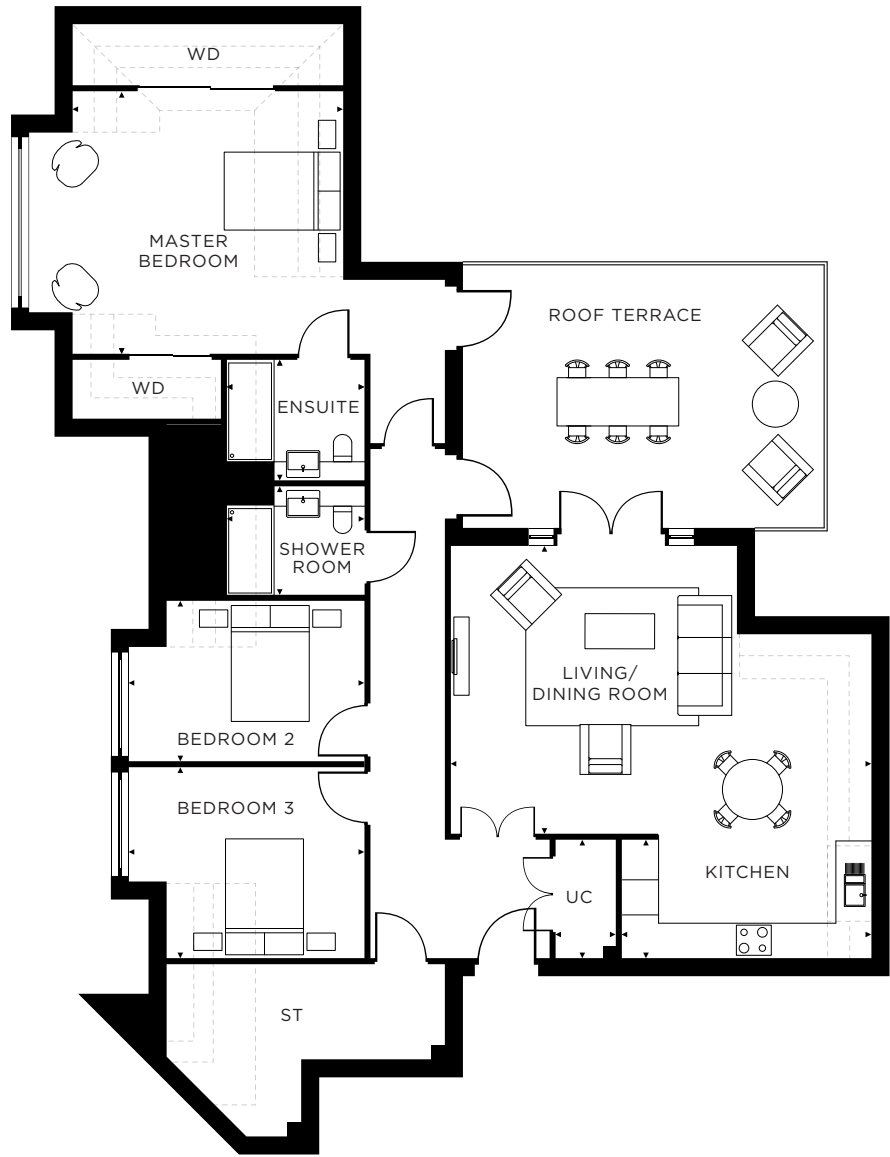
WD	WARDROBE
UC	UTILITY CUPBOARD

TOTAL AREA 59.08 M² 635.9 FT²



APARTMENT 39
THIRD FLOOR

3 BEDROOM HOME



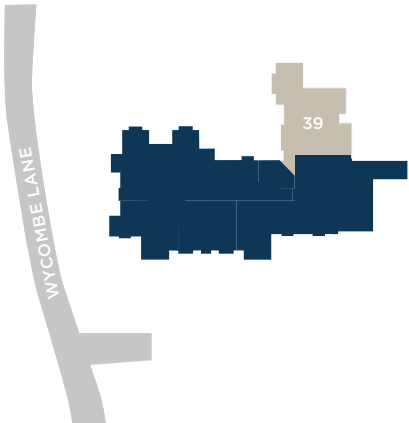
DIMENSIONS

KITCHEN	2.20M X 4.06M	7'3" X 13'4"	BEDROOM 3	3.10M X 3.86M	10'2" X 12'8"
LIVING/DINING ROOM	4.80M X 6.89M	15'9" X 22'7"	UTILITY CUPBOARD	1.00M X 1.90M	3'3" X 6'2"
MASTER BEDROOM	4.33M X 5.09M	14'2" X 16'8"	SHOWER ROOM	2.28M X 1.80M	7'5" X 5'10"
BEDROOM 2	2.67M X 3.86M	8'9" X 12'8"	ENSUITE	2.28M X 2.00M	7'5" X 6'6"

TOTAL AREA 121.37 M² 1306.4 FT²

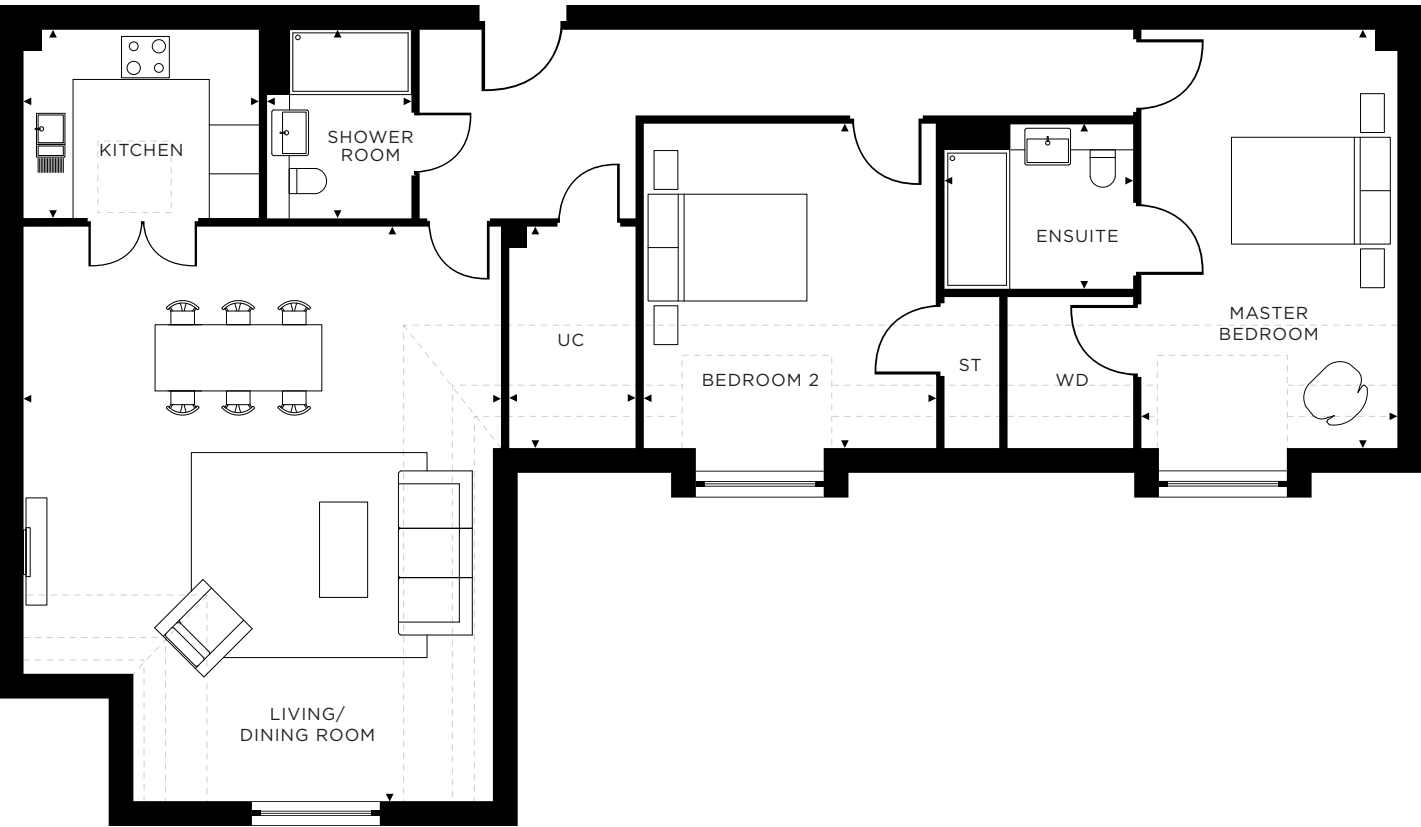
KEY

.....	REDUCED CEILING HEIGHT
ST	STORE
WD	WARDROBE
⌈ ⌋	SKYLIGHT
UC	UTILITY CUPBOARD



APARTMENT 40
THIRD FLOOR

2 BEDROOM HOME



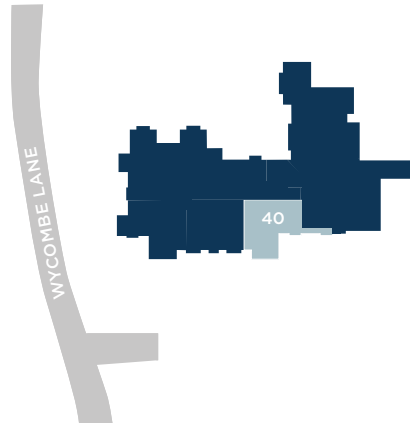
DIMENSIONS

KITCHEN	2.29M X 2.71M	7'6" X 8'11"	UTILITY CUPBOARD	1.62M X 2.58M	5'3" X 8'5"
LIVING/DINING ROOM	5.70M X 6.96M	18'8" X 22'10"	SHOWER ROOM	1.80M X 2.28M	5'10" X 7'5"
MASTER BEDROOM	3.00M X 4.97M	9'10" X 16'4"	ENSUITE	2.28M X 2.00M	7'5" X 6'6"
BEDROOM 2	3.50M X 3.87M	11'6" X 12'8"			

TOTAL AREA 98.69 M² 1062.3 FT²

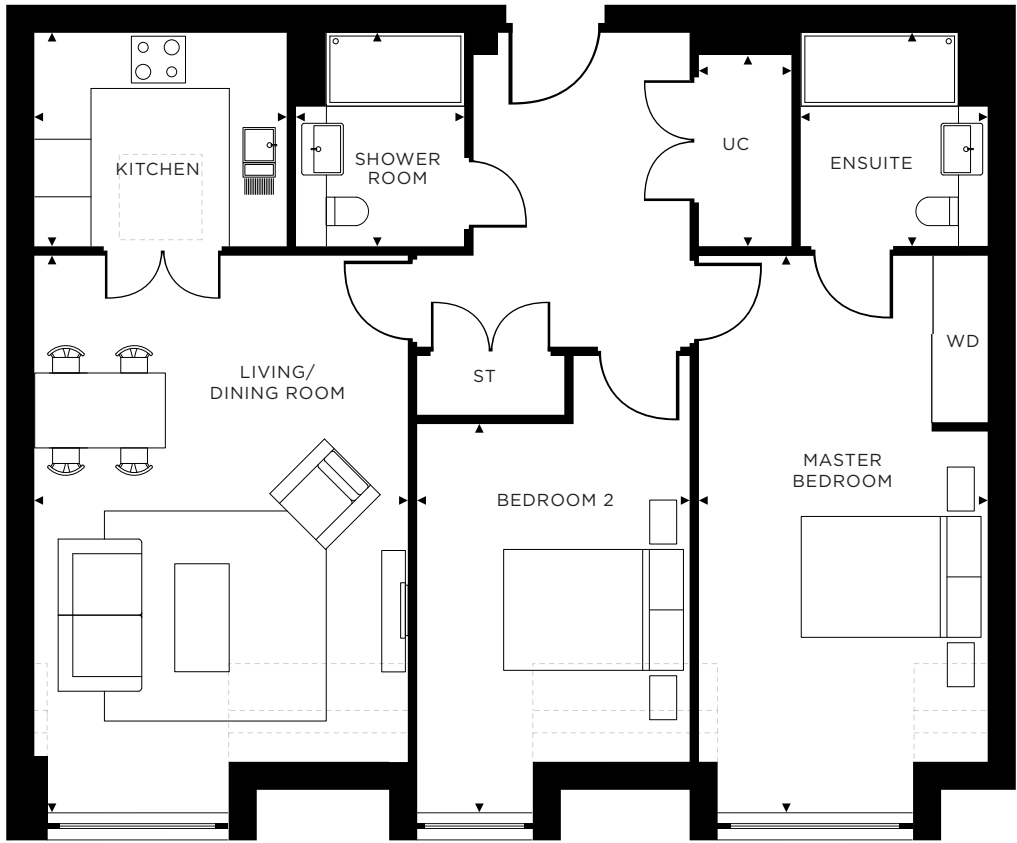
KEY

.....	REDUCED CEILING HEIGHT
ST	STORE
WD	WARDROBE
⌈ ⌋	SKYLIGHT
UC	UTILITY CUPBOARD



APARTMENT 41
THIRD FLOOR

2 BEDROOM HOME



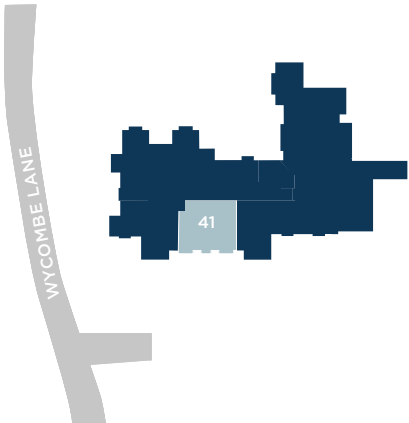
DIMENSIONS

KITCHEN		UTILITY CUPBOARD	
2.29M X 2.71M	7'6" X 8'11"	1.00M X 2.28M	3'3" X 7'5"
LIVING/DINING ROOM		SHOWER ROOM	
3.97M X 5.37M	13'0" X 17'7"	1.80M X 2.28M	5'10" X 7'5"
MASTER BEDROOM		ENSUITE	
3.08M X 5.37M	10'1" X 17'7"	2.00M X 2.28M	6'6" X 7'5"
BEDROOM 2			
2.88M X 3.57M	9'5" X 11'9"		

KEY

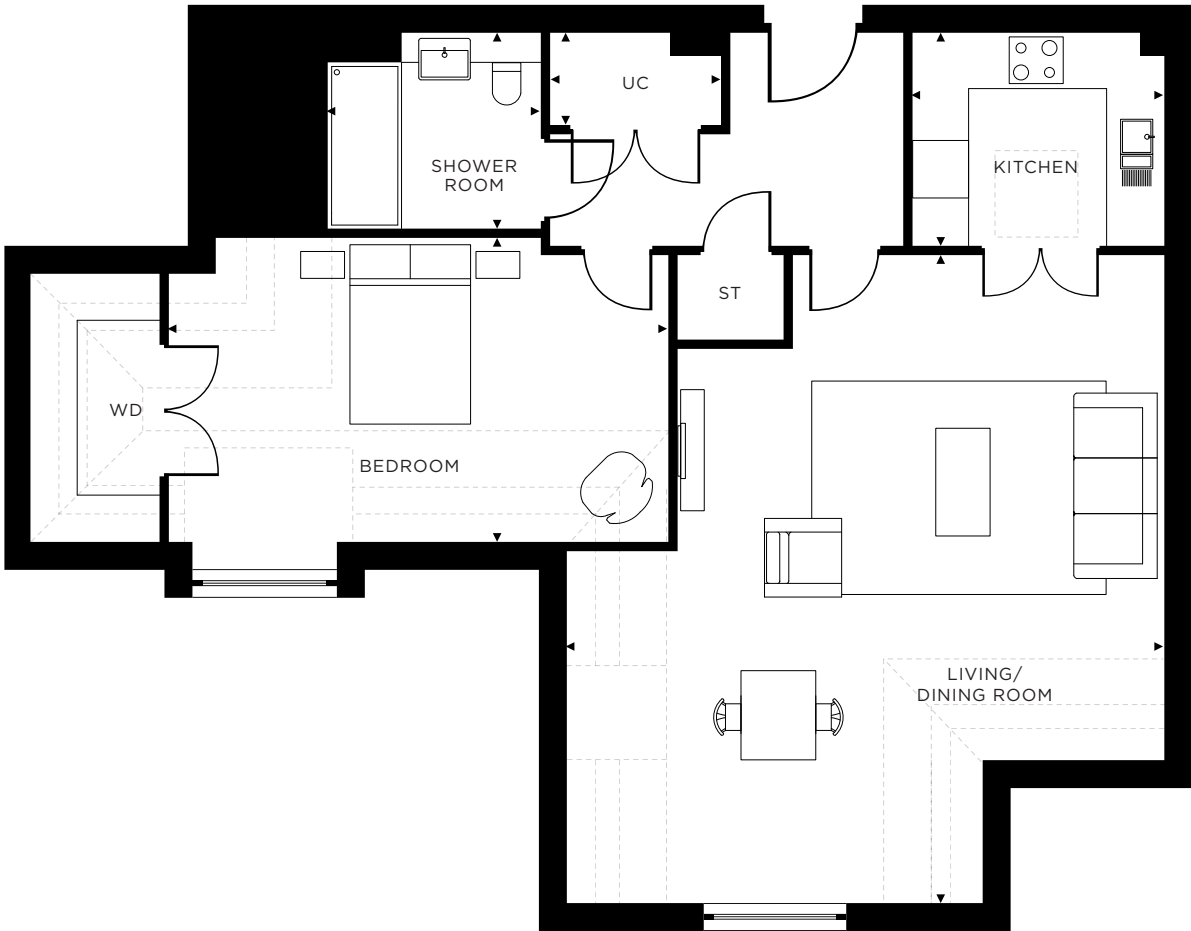
.....	REDUCED CEILING HEIGHT
ST	STORE
WD	WARDROBE
---	SKYLIGHT
UC	UTILITY CUPBOARD

TOTAL AREA 80.38 M² 865.2 FT²



APARTMENT 42
THIRD FLOOR

1 BEDROOM HOME



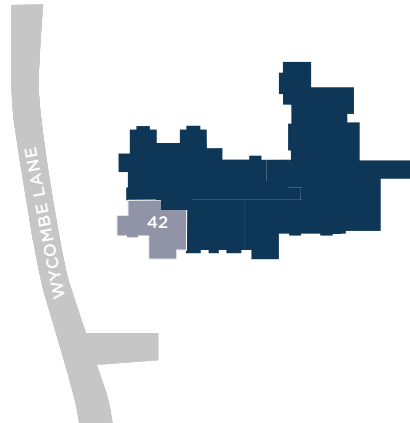
DIMENSIONS

KITCHEN		UTILITY CUPBOARD	
2.29M X 2.71M	7'6" X 8'11"	1.80M X 1.00M	5'10" X 3'3"
LIVING/DINING ROOM		SHOWER ROOM	
5.21M X 6.93M	17'1" X 22'9"	2.28M X 2.10M	7'5" X 6'10"
BEDROOM			
3.39M X 5.38M	11'2" X 17'8"		

KEY

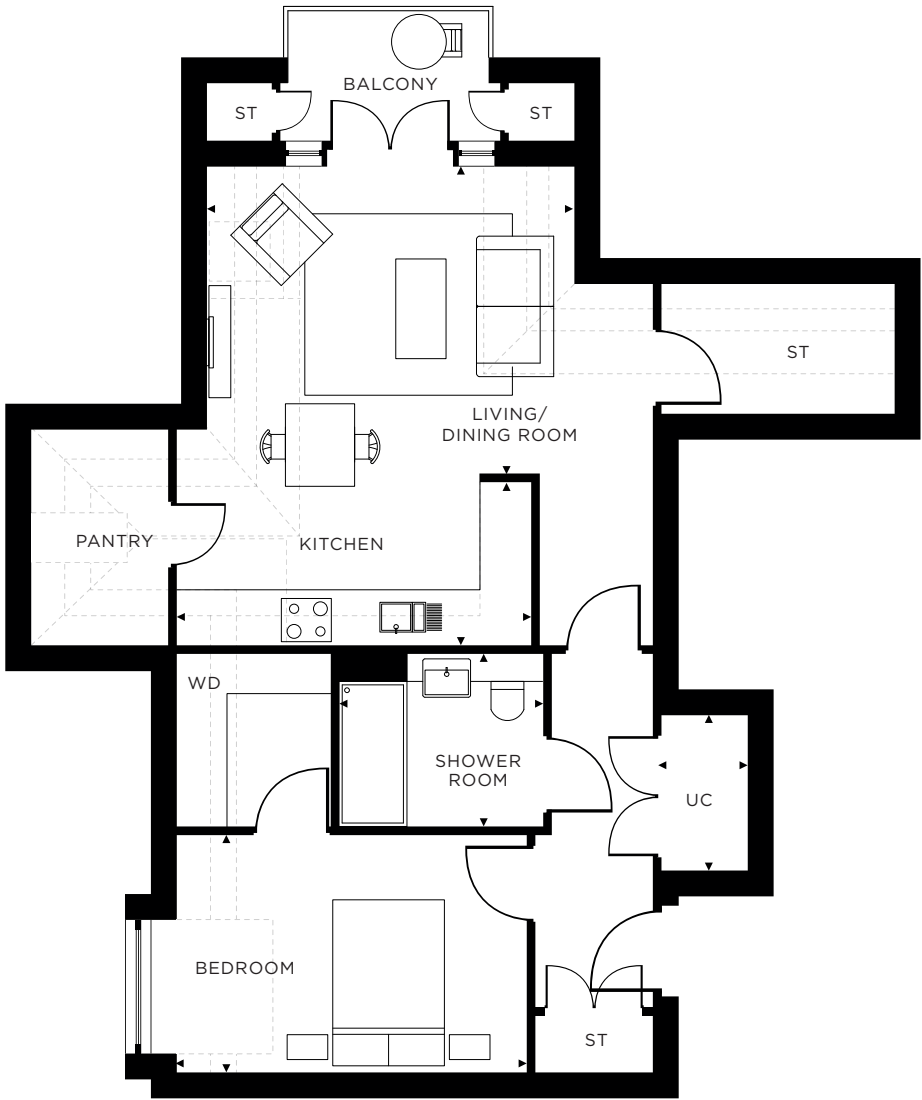
.....	REDUCED CEILING HEIGHT
ST	STORE
WD	WARDROBE
---	SKYLIGHT
UC	UTILITY CUPBOARD

TOTAL AREA 77.02 M² 829.0 FT²



APARTMENT 43
THIRD FLOOR

1 BEDROOM HOME



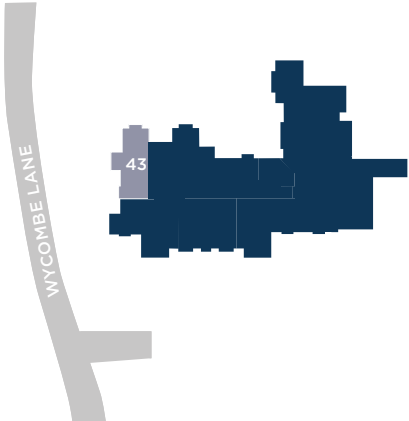
DIMENSIONS

KITCHEN		UTILITY CUPBOARD	
1.90M X 4.04M	6'3" X 13'3"	1.00M X 1.80M	3'3" X 5'10"
LIVING/DINING ROOM		SHOWER ROOM	
5.06M X 3.61M	16'7" X 11'10"	2.28M X 2.00M	7'5" X 6'6"
BEDROOM			
2.77M X 3.98M	9'1" X 13'1"		

KEY

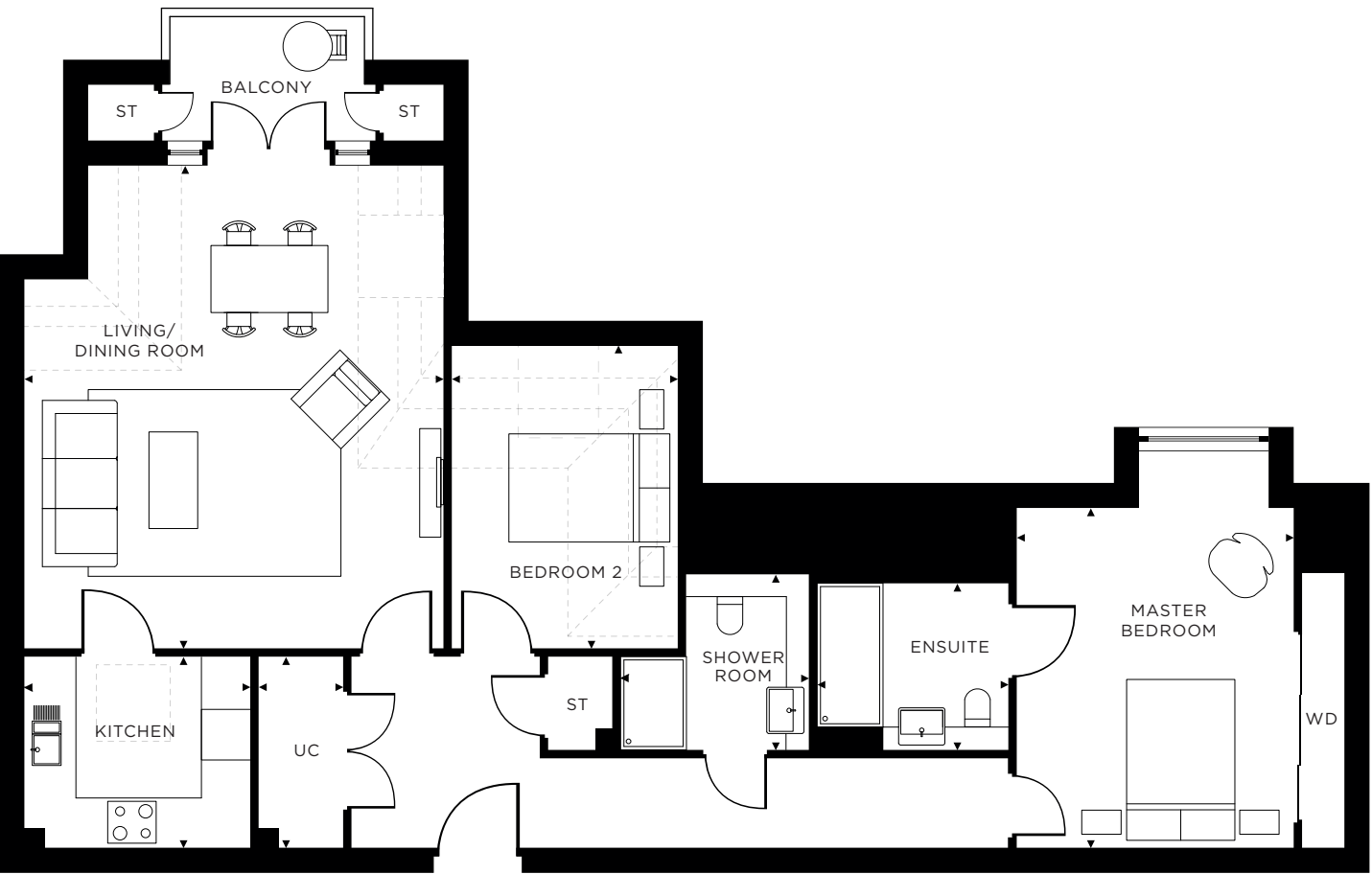
.....	REDUCED CEILING HEIGHT
ST	STORE
WD	WARDROBE
---	SKYLIGHT
UC	UTILITY CUPBOARD

TOTAL AREA 58.92 M² 634.2 FT²



APARTMENT 44
THIRD FLOOR

2 BEDROOM HOME



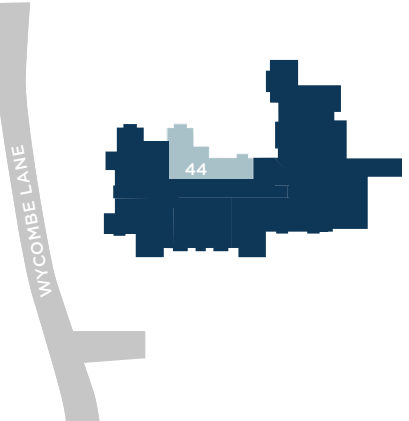
DIMENSIONS

KITCHEN		UTILITY CUPBOARD	
2.29M X 2.71M	7'6" X 8'11"	1.00M X 2.28M	3'3" X 7'5"
LIVING/DINING ROOM		SHOWER ROOM	
5.02M X 5.75M	16'6" X 18'10"	2.26M X 2.14M	7'4" X 7'0"
MASTER BEDROOM		ENSUITE	
3.36M X 3.96M	11'0" X 12'12"	2.28M X 2.00M	7'5" X 6'6"
BEDROOM 2			
2.74M X 3.58M	8'12" X 11'9"		

KEY

.....	REDUCED CEILING HEIGHT
ST	STORE
WD	WARDROBE
---	SKYLIGHT
UC	UTILITY CUPBOARD

TOTAL AREA 84.12 M² 905.5 FT²



OUR ASSURANCE TO YOU

We at Pegasus take care of the external building maintenance, building’s insurance and communal utility bills, all covered by your service charge. We also ensure the shared areas are meticulously cleaned and maintained.

Our dedicated friendly and approachable on-site teams work to ensure the support provided is always tailored to customers’ needs.

The Communities Management team makes regular visits to our communities and conducts annual service-charge meetings – all with complete transparency.

We strive to deliver the highest standard of service, and passionately believe that transparency is fundamental to maintaining our customers’ peace of mind.

CONTACT INFORMATION

If you’d like to find out more about Pegasus Wooburn Bales and keep up with the latest news, please contact:

01628 918 062
wooburnbales@lifestory.group

10 Wycombe Lane,
Wooburn Green,
High Wycombe,
HP10 0EZ

pegasushomes.co.uk/wooburn-bales



IMPORTANT NOTICE:

These details are intended to give a general indication of the proposed development and floor layouts and are believed to be correct at the time of printing. Pegasus Homes and its subsidiary companies reserves the right to make any changes thought necessary to the development, individual specifications or floor layouts at any time. The content of this brochure does not constitute an offer or form any contract or an inducement of any such contract. All dimensions are scaled from the architect’s drawings. Final dimensions may vary slightly. Floorplans are for illustrative purposes only. Room measurements are taken from the floor plans and are to be used as a guide only.

