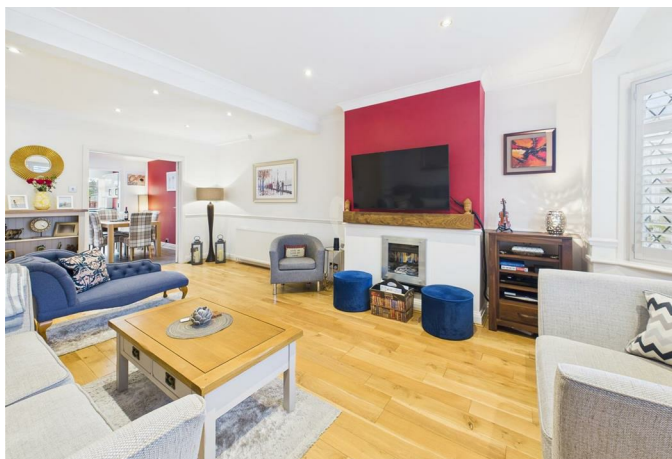




Barnstaple Road, Ruislip, HA4 0UP

An exceptionally well-presented and skilfully extended three-bedroom, two-bathroom home, situated in a peaceful and highly convenient location. This versatile residence offers an open-plan extended living/dining area, a beautifully appointed fitted kitchen, a separate utility room, and a downstairs bathroom, providing excellent space for modern family living. The first floor comprises a master bedroom, a further double bedroom, and a modern family bathroom. The property also benefits from its own private drive, a good-sized rear garden, and a garden shed.

Ideally positioned close to both South Ruislip and Ruislip Manor amenities, the property offers excellent transport links including the Chiltern, Central, Metropolitan, and Piccadilly lines, as well as highly regarded local schools such as Ruislip High and Deanesfield. It is also conveniently located for the popular Old Dairy development, offering an Asda supermarket, restaurants, and a cinema. The A40 is within easy reach, providing swift access to London and the Home Counties, and several family-friendly parks are only a short walk away.



ENTRANCE HALL

Front aspect double glazed door, door to:

LIVING ROOM

Front aspect double glazed leaded light bay window, downlighting, double radiator, coved ceiling, storage cupboard, french doors to:

DINING ROOM

Sky light, tiled flooring, double radiator, downlighting.

KITCHEN

Rear aspect double glazed window, tiled flooring, a range of base and eye level units, integrated stainless steel sink and drainer, oven, electric stove unit with 4 hobs, microwave, space for washing machine.

UTILITY ROOM

Rear aspect double glazed window, wall mounted boiler, space for fridge/freezer, tumble dryer.

BATHROOM

Fully tiled walls and flooring, panel enclosed bathtub with mixer taps and shower attachment, wash hand basin, low level w/c, downlighting, heated towel rail, extractor fan.

FIRST FLOOR LANDING

Loft hatch, downlighting, doors to:

BEDROOM ONE

Front aspect double glazed leaded light bay window, radiator, fitted wardrobes.

BEDROOM TWO

Rear aspect double glazed window, radiator.

BEDROOM THREE

Dual aspect double glazed window, downlighting, radiator.

BATHROOM

Tiled flooring and walls, shower cubicle, wash hand basin, low level w/c.

REAR GARDEN

Mainly laid to lawn, patio area, shed.

COUNCIL TAX

London Borough of Hillingdon - Band D - £1,952.38

N.B. WE RECOMMEND YOUR SOLICITOR VERIFIES THIS BEFORE EXCHANGE OF CONTRACTS.

DISTANCE TO STATIONS

South Ruislip (0.5 Miles) - Central and Overground
Eastcote (0.9 Miles) - Metropolitan/Piccadilly
Ruislip Manor (0.9 Miles) - Metropolitan/Piccadilly
Ruislip (0.9 Miles) - Metropolitan/Piccadilly



73 Victoria Road, Ruislip Manor, Middlesex, HA4 9BH

T: 01895 699077

ruislipmanor@gibsonhoney.co.uk

www.gibsonhoney.co.uk

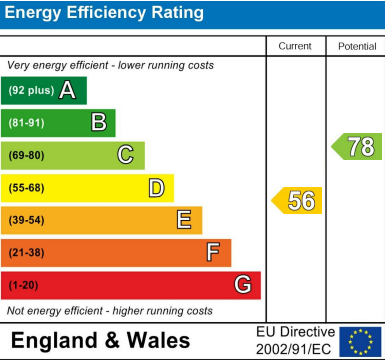


Approximate total area*
1084 ft²

(1) Excluding balconies and terraces

Calculations reference the BICS IPMS
3C standard. Measurements are
approximate and not to scale. This
floor plan is intended for illustration
only.

GIRAFFE360



You may download, store and use the material for your own personal use and research. You may not republish, retransmit, redistribute or otherwise make the material available to any party or make the same available on any website. These particulars, whilst believed to be accurate are set out as a general outline only for guidance and do not constitute any part of an offer or contract. Intending purchasers should not rely on them as statements or representation of fact, but must satisfy themselves by inspection or otherwise as to their accuracy. No person in this firms employment has the authority to make or give any representation or warranty in respect of the property.