



# Nene Drive

Kings Heath, Northampton

oriordanbond  
SALES & LETTINGS





## Nene Drive

Kings Heath

NN5 7NQ

PRICE £240,000

**Making an ideal purchase for first time buyers and presented to an immaculate standard throughout is this two bedroom semi-detached house. Located on the outskirts of Kings Heath, set within close proximity to local schools and parks.**

The accommodation comprises entrance hall, cloakroom/WC, kitchen and a sitting/dining room to the rear with patio doors leading to the well maintained rear garden. Upstairs you will find two double size bedrooms both with fitted wardrobes and a re-fitted family bathroom. The property also benefits from gas central heating, uPVC double glazing and off road parking for two cars to the front. (B/637/M)

### Additional information

- Council Tax Band: B
- Energy Efficiency Rating:

### Viewing

Viewing strictly by appointment – details below

### Disclaimer

O'Riordan Bond Estate Agents Limited has not tested apparatus, equipment, fittings or services and so cannot verify they are in working order. The buyer is advised to obtain verification from their solicitor or surveyor.

O'Riordan Bond Duston Sales

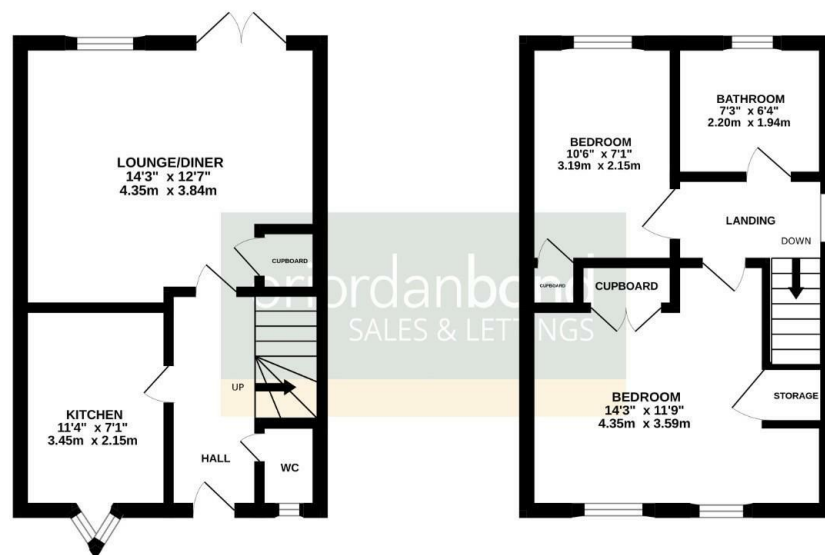
01604 589007

duston@oriordanbond.co.uk



GROUND FLOOR  
319 sq.ft. (29.7 sq.m.) approx.

1ST FLOOR  
317 sq.ft. (29.5 sq.m.) approx.



TOTAL FLOOR AREA : 637 sq.ft. (59.2 sq.m.) approx.

Whilst every attempt has been made to ensure the accuracy of the floorplan contained here, measurements of doors, windows, stairs and any other items are approximate and no responsibility is taken for any error, omission or mis-statement. This plan is for illustrative purposes only and should be used as such by any prospective purchaser. The services, systems and appliances shown have not been tested and no guarantee as to their operability or efficiency can be given.  
Made with Metropix 02020