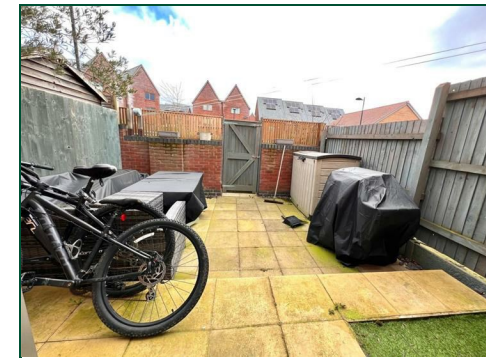




Rounding Mews

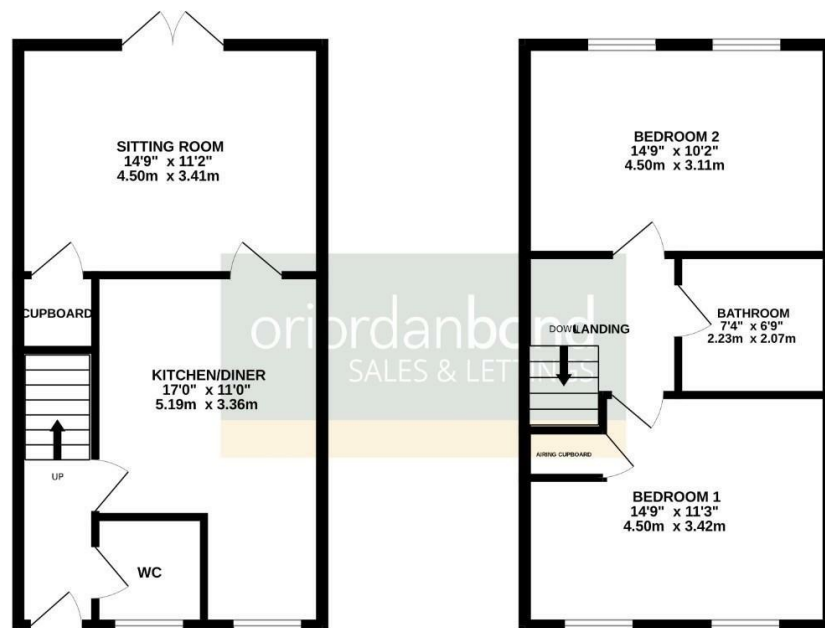
Upton, Northampton

oriordanbond
SALES & LETTINGS



GROUND FLOOR
416 sq.ft. (38.7 sq.m.) approx.

1ST FLOOR
416 sq.ft. (38.7 sq.m.) approx.



While every attempt has been made to ensure the accuracy of the floorplan contained here, measurements of doors, windows, rooms and any other items are approximate and no responsibility is taken for any error, omission or mis-statement. This plan is for illustrative purposes only and should be used as such by any prospective purchaser. The services, systems and appliances shown have not been tested and no guarantee as to their operability or efficiency can be given.
Made with Metreplan 6.0/2025

Rounding Mews

Upton

NN5 4FE

OFFERS OVER £240,000

Offered to the market with no onward chain and making an ideal purchase for first time buyers is this recently updated two bedroom terraced house. Located in the ever popular area of Upton, set within close proximity to Sixfields Leisure Park and offering great travel links to the M1, the property offers generous living space and is presented in an immaculate condition.

Accommodation comprises entrance hall, sitting room with French doors leading to the low maintenance rear garden, kitchen/dining room with integrated appliances, cloakroom/WC, two first floor double bedrooms and a family bathroom. The property also benefits from gas radiator heating with a new combi boiler recently installed, solar panels, double glazing and one allocated parking space in a secure car park (B/833/S)

Additional information

- Council Tax Band: C
- Energy Efficiency Rating: B

Viewing

Viewing strictly by appointment – details below

Disclaimer

O'Riordan Bond Estate Agents Limited has not tested apparatus, equipment, fittings or services and so cannot verify they are in working order. The buyer is advised to obtain verification from their solicitor or surveyor.

O'Riordan Bond Duston Sales

01604 589007

duston@oriordanbond.co.uk

