



Forest View, Chingford, E4

BUTLER  STAG



An immaculate penthouse apartment situated in a prime North Chingford with uninterrupted views of Chingford Golf Course and Epping Forest.



Leasehold

- Penthouse Apartment Overlooking Epping Forest
- Urban Myth Kitchen
- Floor-To - Ceiling Windows In The Lounge
- 3 Balconies
- Lift Access To All Floors With Entry Phone System
- Principal Bedroom With South Facing Balcony & En - Suite

Welcome to Montgomerie Court, a stunning two-bedroom penthouse apartment offering contemporary living with breathtaking outdoor spaces. Spanning approximately 93.4 sq. metres (1005.1 sq. feet), this beautifully designed home is the epitome of modern elegance.

At the heart of the apartment is a spacious open-plan kitchen, living, and dining area, designed for both relaxation and entertaining. The high-end Urban Myth kitchen is a true highlight, featuring sleek cabinetry and premium appliances, perfect for culinary enthusiasts. The expansive living area seamlessly extends to a large private balcony, creating an inviting indoor-outdoor flow with two sets of floor-to-ceiling sliding doors giving a real airy feel to the balcony.

The master bedroom is a serene retreat, complete with a stylish en-suite bathroom and access to a private south-facing balcony, offering the perfect place to unwind. The second bedroom features a built-in wardrobe and its own private balcony, making it an ideal guest room or home office. A contemporary shower room completes this well-appointed penthouse.

With its three balconies, generous proportions, and high-quality finishes, this exceptional penthouse provides a rare opportunity for sophisticated urban living.

Life in North Chingford offers the perfect balance between city convenience and suburban tranquility. On the doorstep on the edge of Epping Forest, this sought-after area boasts scenic green spaces, making it a haven for outdoor enthusiasts who enjoy walking, cycling, and nature. The high street is lined with independent boutiques, cosy cafés, restaurants, and traditional pubs, creating a friendly village-like atmosphere.

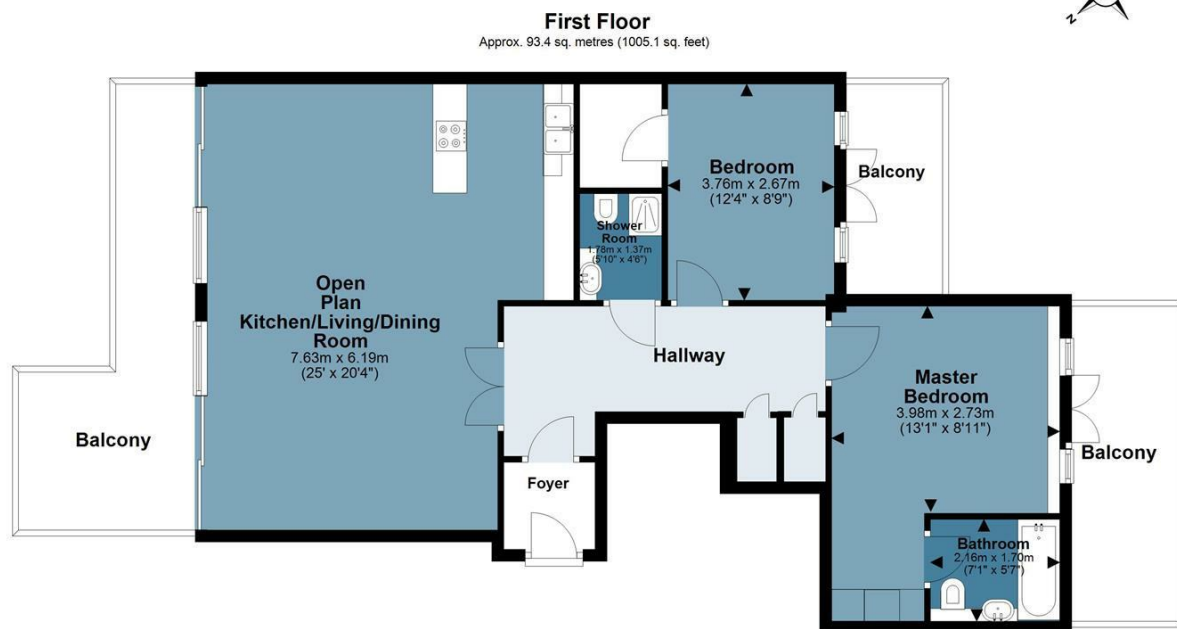




Montgomery Court

Approx. Gross Internal Area 93.4 Sq M (1005.1 Sq Ft)

BUTLER & STAG



Measurements are approximate and for illustration purposes only. While we do not doubt the accuracy and completeness, we advise you conduct a careful independent assessment of the property to determine monetary value.
© @modephotouk www.modephoto.co.uk

IMPORTANT NOTICE - These particulars have been prepared in good faith and they are not intended to constitute part of an offer or contract. We have not performed a structural survey on this property and the services, appliances and specific fittings have not been tested. All photographs, measurements, floor plans and distances referred to are given as a guide and should not be relied upon.

BUTLER & STAG

☎ 020 8504 9000

🏠 184 Queen's Road, Buckhurst Hill, IG9 5BD

✉ buckhursthill@butlerandstag.com

www.butlerandstag.uk