



Ardmore Lane, Buckhurst Hill, IG9

BUTLER & STAG



Available to view now, a two double bedroom apartment in the heart of Buckhurst Hill.



- Two Bedroom Apartment
- Great Location
- Good Transport Links
- Modern
- Spacious
- Must Be Seen

Butler & Stag are delighted to offer this fantastic two double bedroom apartment.

This property offers two well proportioned double bedrooms, a family bathroom and a modern kitchen with integrated appliances.

Ardmore Lane is just a half mile from the Central Line transport of Buckhurst Hill (TFL 4) and the shops bars and independent restaurants are an absolute treat.

Council Tax Band D

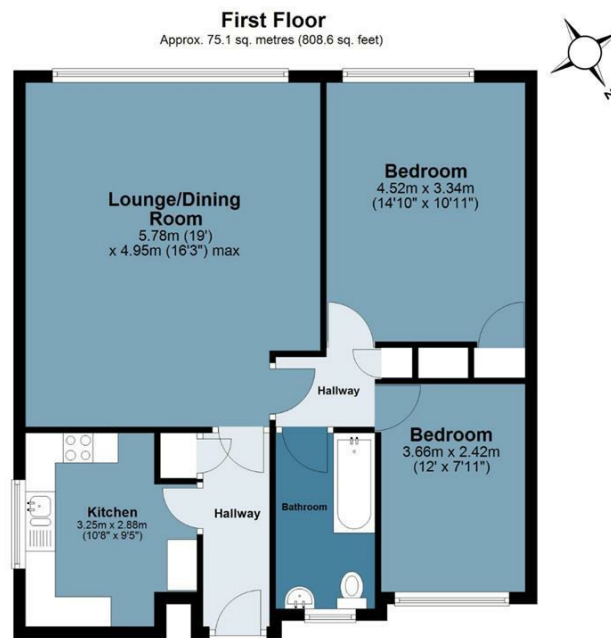




Ardmore Lane

Approx. Gross Internal Area 75.1 sq. metres (808.6 sq. feet)

BUTLER & STAG



Measurements are approximate and for illustration purposes only. While we do not doubt the accuracy and completeness, we advise you conduct a careful independent assessment of the property to determine monetary value
© @modephoto.uk www.modephoto.co.uk

IMPORTANT NOTICE - These particulars have been prepared in good faith and they are not intended to constitute part of an offer or contract. We have not performed a structural survey on this property and the services, appliances and specific fittings have not been tested. All photographs, measurements, floor plans and distances referred to are given as a guide and should not be relied upon.

BUTLER & STAG

☎ 020 8504 9000

🏠 184 Queen's Road, Buckhurst Hill, IG9 5BD

✉ buckhursthill@butlerandstag.com

www.butlerandstag.uk