



North End, Buckhurst Hill, IG9

BUTLER  STAG



GUIDE PRICE £525,000 - £550,000. Located on the door step of Epping Forest this beautifully restored two-bedroom period home perfectly blends timeless character with modern living. The property has been sympathetically renovated, retaining its original charm while offering contemporary comforts throughout.



Freehold

- Charming Period Cottage
- On The Doorstep of Epping Forest
- South Facing Garden
- Fully Integrated Shaker Kitchen
- Built in Bedroom Storage
- Short Walk to Queens Road

Located on the door step of Epping Forest this beautifully restored two-bedroom period home perfectly blends timeless character with modern living. The property has been sympathetically renovated, retaining its original charm while offering contemporary comforts throughout.

The ground floor boasts a spacious lounge with a cosy wood burner, perfect for relaxing evenings. The stylish shaker kitchen, equipped with fully integrated appliances, opens onto a delightful south-facing garden, ideal for entertaining or enjoying the sunshine in peace.

Upstairs, the first floor comprises a generously sized master bedroom with bespoke built-in wardrobes, and a versatile second bedroom, perfect as a guest room, home office, or nursery.

Situated close to Buckhurst Hill's excellent amenities, transport links, and the picturesque Epping Forest, this home offers the perfect combination of convenience and tranquillity. Don't miss this opportunity to make it yours!

Nestled in the leafy outskirts of London, Buckhurst Hill in Essex offers the perfect blend of urban sophistication and suburban tranquility, making it an ideal spot for young professional couples. With its vibrant high street filled with trendy cafes, boutique shops, and fine dining options, it's a haven for those who enjoy a lively social scene. The excellent transport links, including the Central Line, provide seamless commutes to the City, while the green open spaces of Epping Forest offer a peaceful retreat for weekend adventures. Buckhurst Hill's charming character, top-rated amenities, and thriving community create a balanced lifestyle that's both cosmopolitan and homely—perfect for couples looking to put down roots.

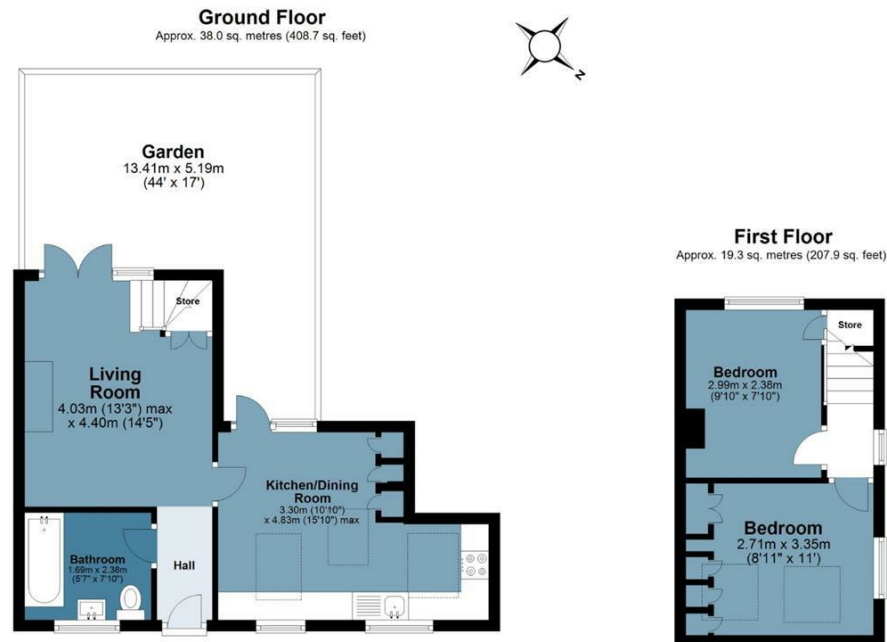




North End

BUTLER & STAG

Approx. Gross Internal Area 57.3 sq. metres (616.6 sq. feet)



Measurements are approximate and for illustration purposes only. While we do not doubt the accuracy and completeness, we advise you conduct a careful independent assessment of the property to determine monetary value
© @modephotouk www.modephoto.co.uk

IMPORTANT NOTICE - These particulars have been prepared in good faith and they are not intended to constitute part of an offer or contract. We have not performed a structural survey on this property and the services, appliances and specific fittings have not been tested. All photographs, measurements, floor plans and distances referred to are given as a guide and should not be relied upon.

BUTLER & STAG

☎ 020 8504 9000

🏠 184 Queen's Road, Buckhurst Hill, IG9 5BD

✉ buckhursthill@butlerandstag.com

www.butlerandstag.uk