



Bury Lane, Epping, CM16

BUTLER & STAG



Beautifully presented two double bedroom Grade II listed barn conversion located in Creeds Farm Yard, just off of Bury Lane.



- Two Double Bedrooms
- Modern Fitted Kitchen
- Parking
- Gas Central Heating
- Available November
- Barn Conversion

Internally, the ground floor of the property offers a spacious modern fitted kitchen with integrated appliances, lounge with french doors to the rear garden and downstairs bathroom.

On the second floor, there are two double bedrooms. One of the bedrooms benefits from fitted wardrobes and storage.

Externally the property benefits from a private rear garden that is mainly laid to lawn, with a small patio area and storage sheds.

Council Tax Band E

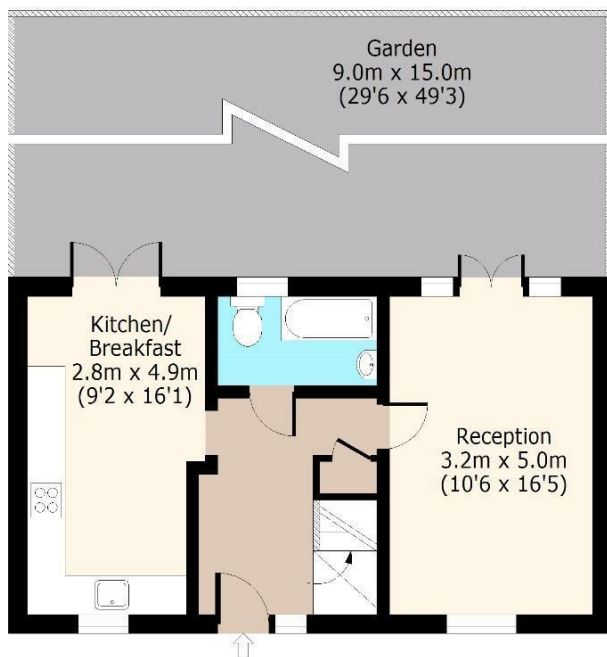




Bury Lane,

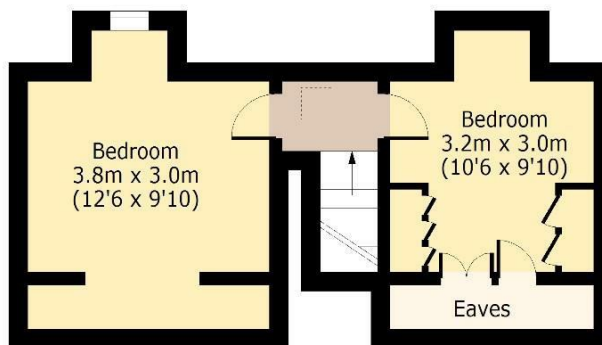
Ground Floor

Approx. 45 Sq. meters (484 Sq. feet)



First Floor

Approx. 33 Sq. meters (355 Sq. feet)



Total area: approx. 78 Sq. meters (840 Sq. feet)
For illustration purposes only - not to scale
www.lpaplus.com

BUTLER & STAG

☎ 020 8504 9000

🏠 184 Queen's Road, Buckhurst Hill, IG9 5BD

✉ buckhursthill@butlerandstag.com

www.butlerandstag.uk

IMPORTANT NOTICE - These particulars have been prepared in good faith and they are not intended to constitute part of an offer or contract. We have not performed a structural survey on this property and the services, appliances and specific fittings have not been tested. All photographs, measurements, floor plans and distances referred to are given as a guide and should not be relied upon.