



Jubilee Avenue, Highams Park, E4

BUTLER & STAG



GUIDE PRICE £500,000 - £525,000. Top floor flat with over 1,100 square feet of living accommodation in the heart of Highams Park just 0.2 miles from the overground station.



Leasehold

- Top Floor Apartment With Lift Access To All Floors
- Over 1,100 sq ft Of Living Accomodation
- Three Bedrooms
- Two Bathrooms
- Gated Parking
- 5 Mins Walk To Overground Station
- Two Balconies
- 244 Year Lease Remaining

An immaculately presented top-floor flat, located just a stone's throw away from Highams Park overground station.

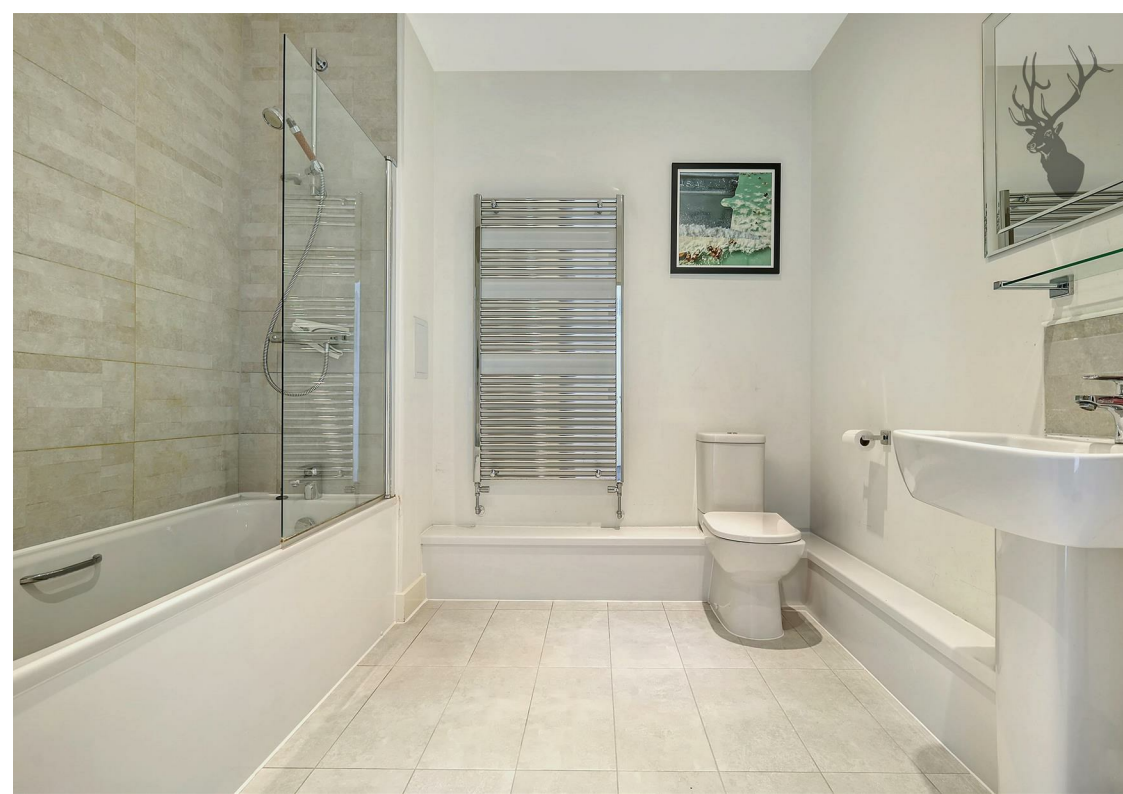
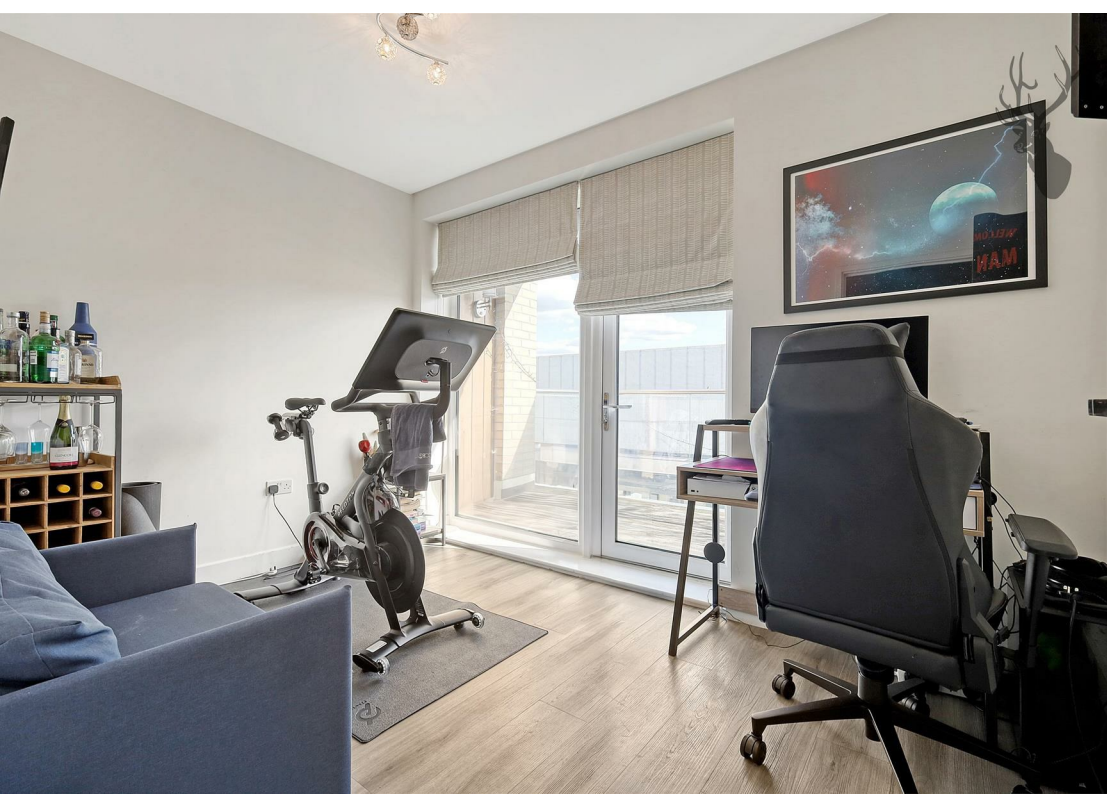
With lift access to all floors, this property offers the ultimate convenience, with an extra wide entrance hallway. Three bedrooms, two balconies and two bathrooms all presented in a turn-key condition.

Enjoy open-plan living with a 30' kitchen lounge and doors onto the southwest-facing balcony. The space is ideal for relaxing or entertaining, the current owners have used the space well and incorporated a table with 6 chairs along with a 3-seater and 2-seater sofa and they have space to spare.

Along with the generous living space, you also have three well-proportioned bedrooms served by two, full-size bathrooms. Additional benefits include plenty of built-in storage with four storage cupboards in the hallway along with a secure, designated parking space.

Highams Park, located in northeast London, offers a pleasant balance between suburban charm and city convenience. Nestled around a picturesque lake and surrounded by green spaces like Epping Forest, the area is perfect for nature lovers who enjoy scenic walks, cycling, and outdoor activities. With a strong sense of community, it has a village-like feel, with a range of independent shops, cafés, and local markets adding to its appeal. Families are drawn to its good schools and parks, while excellent transport links, including an Overground station, provide easy access to central London, making Highams Park an attractive spot for those seeking tranquility without losing urban connectivity.

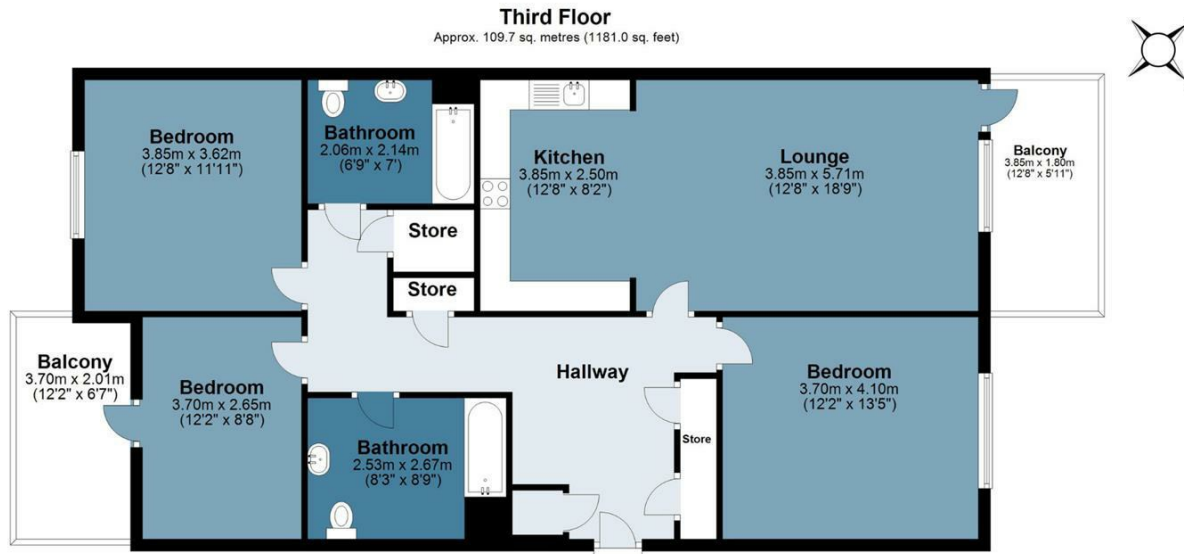




Furrow House



Approx. Gross Internal Area 109.7 sq. metres (1181.0 sq. feet)



Measurements are approximate and for illustration purposes only. While we do not doubt the accuracy and completeness, we advise you conduct a careful independent assessment of the property to determine monetary value
© @modephotouk www.modephoto.co.uk



☎ 020 8504 9000

🏠 184 Queen's Road, Buckhurst Hill, IG9 5BD

✉ buckhursthill@butlerandstag.com

IMPORTANT NOTICE - These particulars have been prepared in good faith and they are not intended to constitute part of an offer or contract. We have not performed a structural survey on this property and the services, appliances and specific fittings have not been tested. All photographs, measurements, floor plans and distances referred to are given as a guide and should not be relied upon.

www.butlerandstag.uk