



Larkshall Road, London, E4

BUTLER & STAG



This charming 1930s semi-detached home is on a private slip road off Larkshall Road. The property is well presented throughout. With good local schooling nearby and greenspaces such as The Ridgeway, this home is perfect for the growing family.



Freehold

- Guide Price £700,000 - £725,000
- Off Street Parking For 2 Cars
- 60' West Face Garden
- Potential To Extend (SSTP)
- Close To Amenities And Local Schooling
- Over 1,300 Of Living Accommodation

This superbly spacious and extended four-bedroom semi-detached house is situated on a quiet slip road, conveniently close to the mainline station. The property features off-street parking at the front, large side access, an extended kitchen, a large through lounge, a first-floor bathroom, and a generous rear garden approximately 60 feet in length that even includes a sauna!

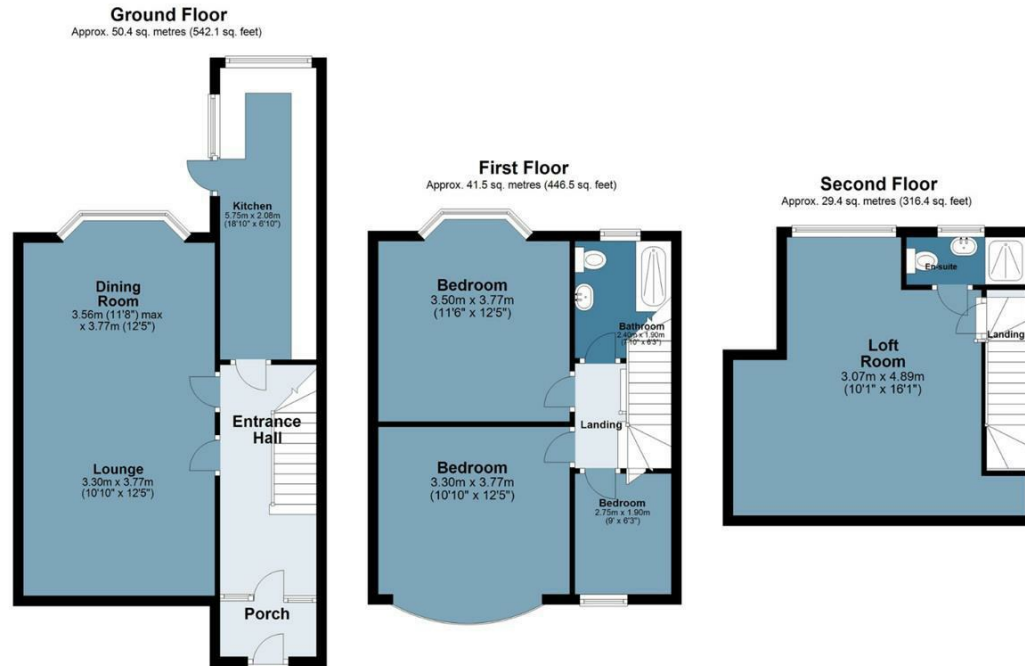
This family home is ideally situated just a short walk from Station Road, which offers a variety of bars, restaurants, coffee shops, and local bus routes. Chingford Overground Station is also nearby, providing direct access to Liverpool Street and Walthamstow Central, where you can connect to the Victoria Line. The house is close to Epping Forest and Bluebell Forest, perfect for leisurely walks. Several primary and secondary schools are within walking distance, making this an excellent family home. Viewings are highly recommended to fully appreciate all it has to offer.





Larkshall Road

Approx. Gross Internal Area 121.2 sq. metres 1305.1 sq. feet)



Measurements are approximate and for illustration purposes only. While we do not doubt the accuracy and completeness, we advise you conduct a careful independent assessment of the property to determine monetary value
© @modephotouk www.modephoto.co.uk



☎ 020 8504 9000

🏠 184 Queen's Road, Buckhurst Hill, IG9 5BD

✉ buckhursthill@butlerandstag.com

IMPORTANT NOTICE - These particulars have been prepared in good faith and they are not intended to constitute part of an offer or contract. We have not performed a structural survey on this property and the services, appliances and specific fittings have not been tested. All photographs, measurements, floor plans and distances referred to are given as a guide and should not be relied upon.

www.butlerandstag.uk