



Mount Echo Drive, Chingford, E4

BUTLER & STAG



**GUIDE PRICE £850,000
- £900,000**
**Outstanding four
double bedroom family
home in a desirable
North Chingford
location.**



Freehold

- Four Bedroom Family Home
- Two Well Proportioned Reception Rooms + Kitchen/Breakfast Room
- Storage Room + Guest Facilities
- Hugely Popular North Chingford Location
- Rear Garden In Excess of 100' With A Broadly Southerly Aspect
- Drive Parking + Garage

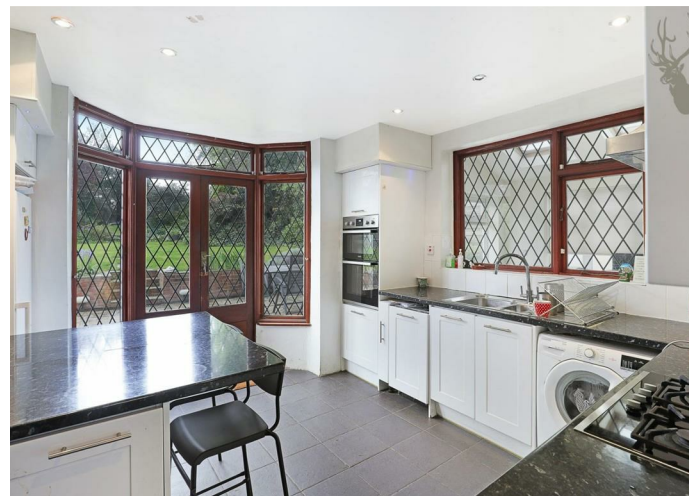
Nestled in the sought-after Mount Echo Drive in London, this charming four-bedroom mock Tudor family home is a true gem. Boasting a property age from the 1930s/1950s, this house exudes character and warmth.

As you step inside, you are greeted by two inviting reception rooms, perfect for entertaining guests or simply relaxing with your loved ones. The property offers ample space with its four bedrooms and two bathrooms, providing comfort and privacy for the whole family.

One of the standout features of this delightful home is the rear garden, stretching over 100 feet with a broadly southerly aspect. Imagine enjoying sunny afternoons in this expansive outdoor space, creating memories that will last a lifetime.

Conveniently, this property also offers parking for two vehicles, a rare find in London, ensuring you never have to worry about parking again. Additionally, its proximity to excellent local schooling and the stunning Epping Forest makes it an ideal location for families.

Don't miss the opportunity to own a piece of history in this outstanding North Chingford location. This house is more than just a property; it's a place where you can truly call home.





Mount Echo Drive, E4

Approx. Gross Internal Area 1475 Sq Ft - 137.03 Sq M

BUTLER & STAG



Measured according to RICS IPMS2. Floor plan is for illustrative purposes only and is not to scale. Every attempt has been made to ensure the accuracy of the floor plan shown, however all measurements, fixtures, fittings and data shown are an approximate interpretation for illustrative purposes only. 1 sq m = 10.76 sq feet.

lpaplus.com

Date: 24/4/2024

IMPORTANT NOTICE - These particulars have been prepared in good faith and they are not intended to constitute part of an offer or contract. We have not performed a structural survey on this property and the services, appliances and specific fittings have not been tested. All photographs, measurements, floor plans and distances referred to are given as a guide and should not be relied upon.

BUTLER & STAG

☎ 020 8504 9000

🏠 184 Queen's Road, Buckhurst Hill, IG9 5BD

✉ buckhursthill@butlerandstag.com

www.butlerandstag.uk