



Chigwell Road, Woodford Green, IG8

BUTLER & STAG



A smart and well-presented two bedroom ground floor flat, located in the heart of Woodford Green.



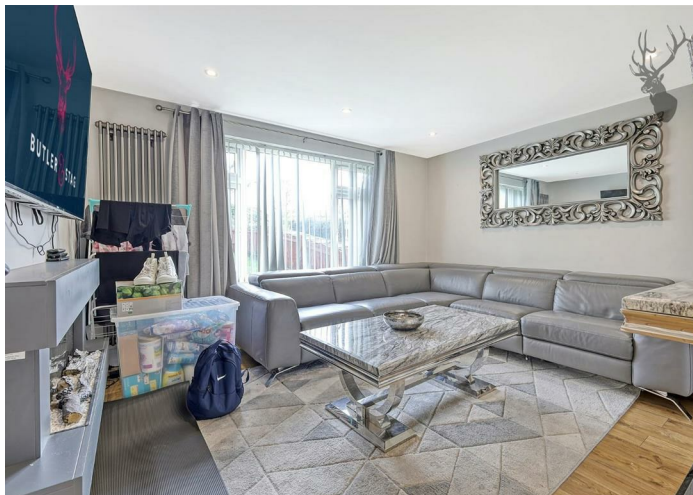
Leasehold

- Ground Floor Flat
- Two Bedrooms
- Great Buy To Let Opportunity
- Garage/Off Street Parking
- CHAIN FREE
- Spacious Lounge

Accommodation comprises of a bright and airy living room, fully fitted kitchen with sleek units, two double bedrooms and a smart bathroom.

Externally, there is a secluded communal rear garden, and your own garage.

Chigwell Road is located within easy reach of Chigwell and Woodford Central Line Train Station which offers easy access into London. Also within close proximity is the ever popular parade of shops on Chigwell Road, boutiques, eateries and restaurants. Further local amenities include Ashton Playing Fields, Virgin Active Repton Park and Tesco Superstore. The area offers a range of access to primary and secondary schools, both private and state.





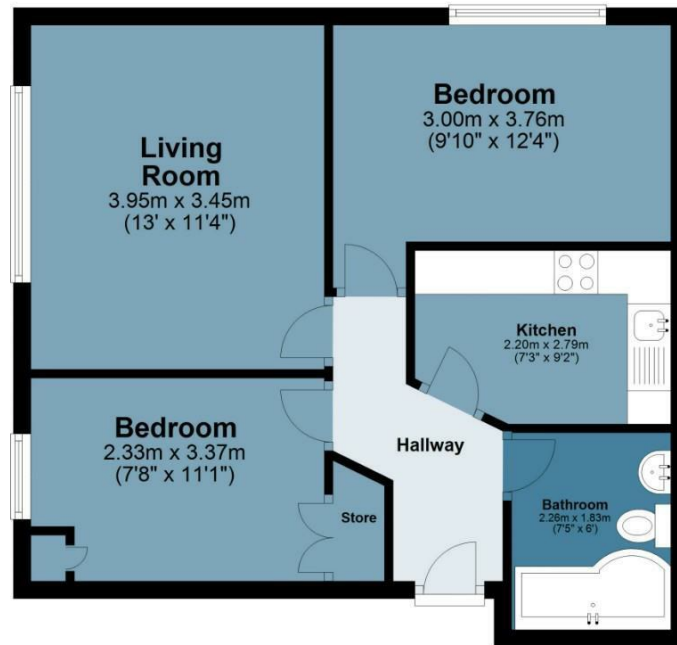
High Road

Approx. Gross Internal Area 47.9 Sq M (516 Sq Ft)

BUTLER & STAG

Ground Floor

Approx. 47.9 sq. metres (516.0 sq. feet)



Measurements are approximate and for illustration purposes only. While we do not doubt the accuracy and completeness, we advise you conduct a careful independent assessment of the property to determine monetary value.
© @modephoto.uk www.modephoto.co.uk

BUTLER & STAG

☎ 020 8504 9000

🏠 184 Queen's Road, Buckhurst Hill, IG9 5BD

✉ buckhursthill@butlerandstag.com

www.butlerandstag.uk

IMPORTANT NOTICE - These particulars have been prepared in good faith and they are not intended to constitute part of an offer or contract. We have not performed a structural survey on this property and the services, appliances and specific fittings have not been tested. All photographs, measurements, floor plans and distances referred to are given as a guide and should not be relied upon.