

# Emma Terry Homes

*moving made personal*



30 Godfrey Street

Netherfield, Nottingham, NG4 2JG

Asking price £155,000





# 30 Godfrey Street, Netherfield, Nottingham NG4 2JG

Asking price £155,000

**\*\*NO UPWARD CHAIN\*\***

Located in Netherfield, Nottingham, this two-bedroom house on Godfrey Street would benefit from a full modernisation. This property is full of potential and ready for someone to transform it to their own taste.

A superb opportunity for buyers with vision, the property provides ample scope to create stylish new interiors throughout—ideal for anyone looking to put their personal stamp on a home and maximise its future value or a great investment opportunity.

Situated close to local amenities, schools and transport links, the property will suit a buyer looking for a renovation project or an investor prepared to carry out essential repairs.



Entrance door to property leads into...

## LOUNGE

A central heating radiator, electric fire and UPVC double glazed window to front.

## LIVING ROOM

A central heating radiator, gas fire, UPVC double glazed window to rear and doors through to kitchen and stairs to first floor.

## KITCHEN

A variety of wall and base units, 1 1/2 bowl sink with mixer tap and drainer, space for cooker, fridge and washing machine, a central heating radiator, two UPVC double glazed windows to side and side entrance door.

## LANDING

Doors through to Bedroom 1, 2 and bathroom and loft hatch with pull down ladder.

## BEDROOM 1

A central heating radiator, built-in storage shelves and two UPVC double glazed windows to front.

## BEDROOM 2

A central heating radiator and UPVC double glazed window to rear.

## BATHROOM

Low level flush WC, wash hand basin with hot and cold tap, bath with hot and cold tap, separate shower enclosure, a central heating radiator and UPVC double glazed obscure window to side.

## OUTBUILDING

Power and lighting.

## OUTSIDE

Delightful rear garden with outside tap, access to outbuilding and gated access to front.

Tel: 0115 966 57 41





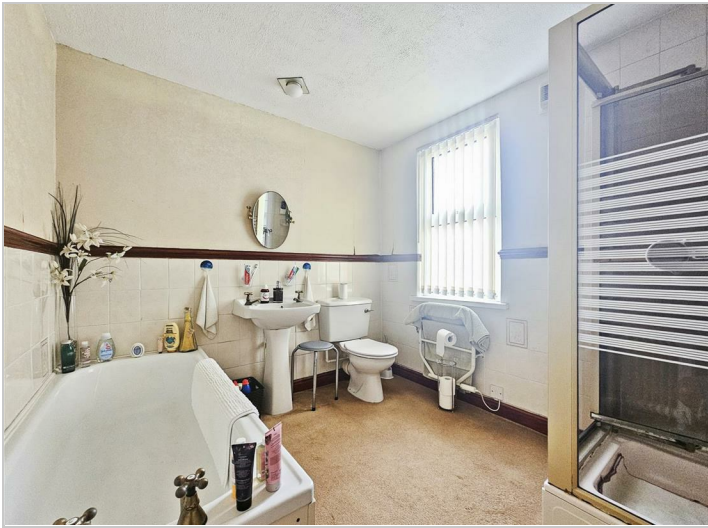














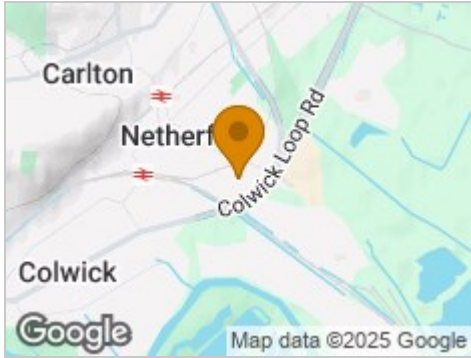
Road Map



Hybrid Map



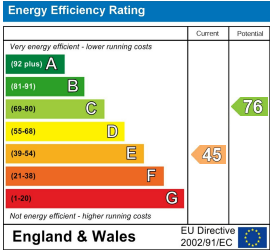
Terrain Map



Viewing

Please contact our Emma Terry Homes Office on 0115 966 57 41 if you wish to arrange a viewing appointment for this property or require further information.

Energy Efficiency Graph



These particulars, whilst believed to be accurate are set out as a general outline only for guidance and do not constitute any part of an offer or contract. Intending purchasers should not rely on them as statements of representation of fact, but must satisfy themselves by inspection or otherwise as to their accuracy. No person in this firms employment has the authority to make or give any representation or warranty in respect of the property.