

Emma Terry Homes

moving made personal



1 Brookside

Lowdham, Nottingham, NG14 7AD

Asking price £340,000



1 Brookside, Lowdham, Nottingham NG14 7AD

Asking price £340,000

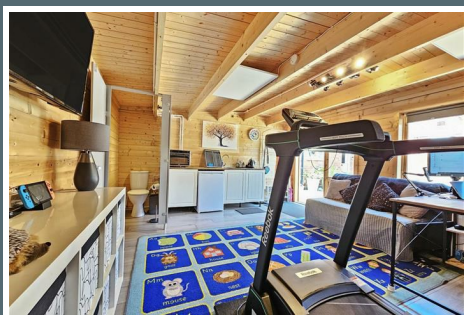
**** PRICED TO SELL ****

Positioned in the heart of Lowdham Village, this beautifully presented and extended three-bedroom semi-detached home offers spacious and versatile accommodation, perfect for modern family living.

The ground floor features a stylish kitchen and dining area, a modern bathroom, and a stunning rear sunroom with a roof lantern, wraparound windows, and side door access to the garden—creating a bright and welcoming living space. Upstairs, the property offers three well-proportioned bedrooms, perfect for family living or a home office.

Outside, the landscaped rear garden includes a lawn and a raised patio area ideal for outdoor dining and entertaining. At the front of the property is a detached, multi-use outbuilding complete with heating, electricity, a toilet, and sink—ideal for a home office, studio or gym. There's also a separate brick-built outhouse that houses a practical utility area.

Located just moments from the heart of Lowdham village, with shops, cafes, transport links and countryside walks all within easy reach, this home truly offers the best of village life in a property you can move straight into.



Entrance door to property leads in to...

KITCHEN

17'2" x 5'10" (5.24m x 1.78m)

A variety of wall and base units, sink with mixer tap and drainer, built-in oven and gas hob with extractor fan, integrated dishwasher and fridge/freezer, a central heating radiator and two UPVC double glazed windows to front.

DINING ROOM

10'10" x 14'1" (3.31m x 4.30m)

A central heating radiator.

LOUNGE/CONSERVATORY

14'0" x 8'10" (4.28m x 2.70m)

Roof lantern and door to side.

HALLWAY

A central heating radiator, UPVC double glazed window to side, doors through to dining room and bathroom and stairs to first floor.

BATHROOM

Enclosed toilet system WC, wash hand basin in vanity unit, bath with mixer tap and electric shower over, heated towel rail and UPVC double glazed obscure window to side.

LANDING

UPVC double glazed window to side and doors through to bedroom 1, 2 and 3.

BEDROOM 1

13'4" x 9'2" (4.08m x 2.80m)

A central heating radiator, built-in storage cupboard and two UPVC double glazed windows to rear.

BEDROOM 2

7'4" x 10'9" (2.26m x 3.28m)

A central heating radiator and UPVC double glazed window to front.

BEDROOM 3

9'3" xx 7'7" (2.83m xx 2.32m)

A central heating radiator and UPVC double glazed window to front.

FRONT

Large gravelled driveway providing off-street parking and gated pathway to front patio area, utility and office.

OFFICE

13'10" x 16'9" (4.22m x 5.11m)

Multi-use out house with drainage, power and heating.

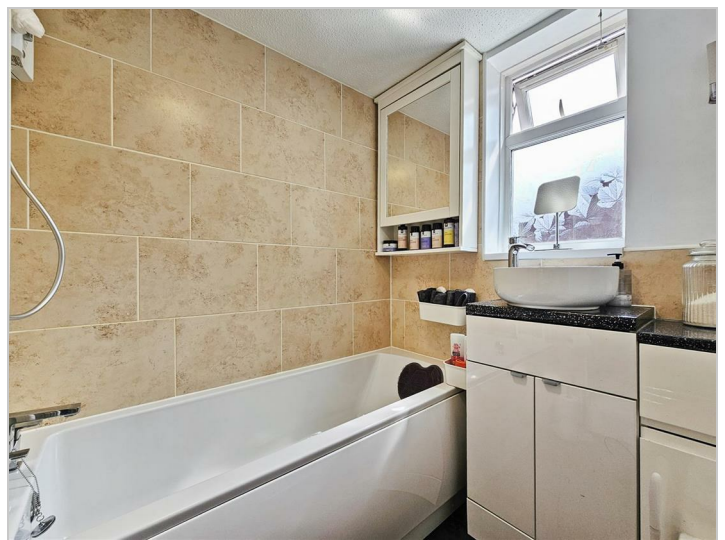
UTILITY

Space for washing machine, dryer and fridge or freezer.

REAR

Landscaped lawn area surrounded by a variety of mature trees, shrubs and bushes and a huge patio area for seating.









Road Map



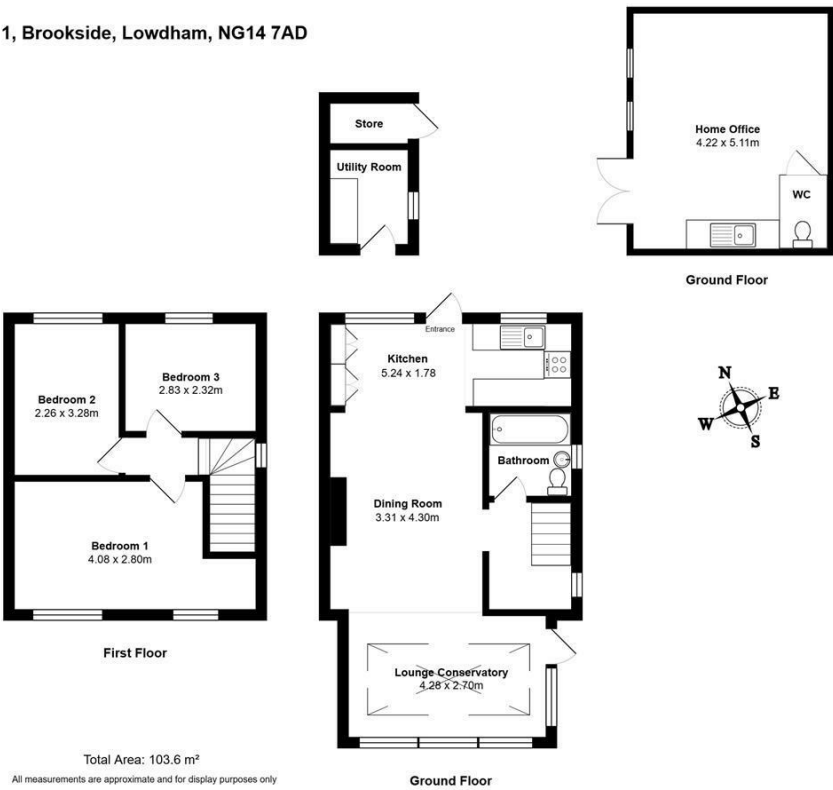
Hybrid Map



Terrain Map



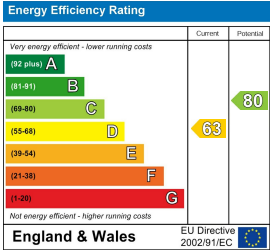
1, Brookside, Lowdham, NG14 7AD



Viewing

Please contact our Emma Terry Homes Office on 0115 966 57 41 if you wish to arrange a viewing appointment for this property or require further information.

Energy Efficiency Graph



These particulars, whilst believed to be accurate are set out as a general outline only for guidance and do not constitute any part of an offer or contract. Intending purchasers should not rely on them as statements of representation of fact, but must satisfy themselves by inspection or otherwise as to their accuracy. No person in this firm's employment has the authority to make or give any representation or warranty in respect of the property.