

Emma Terry Homes

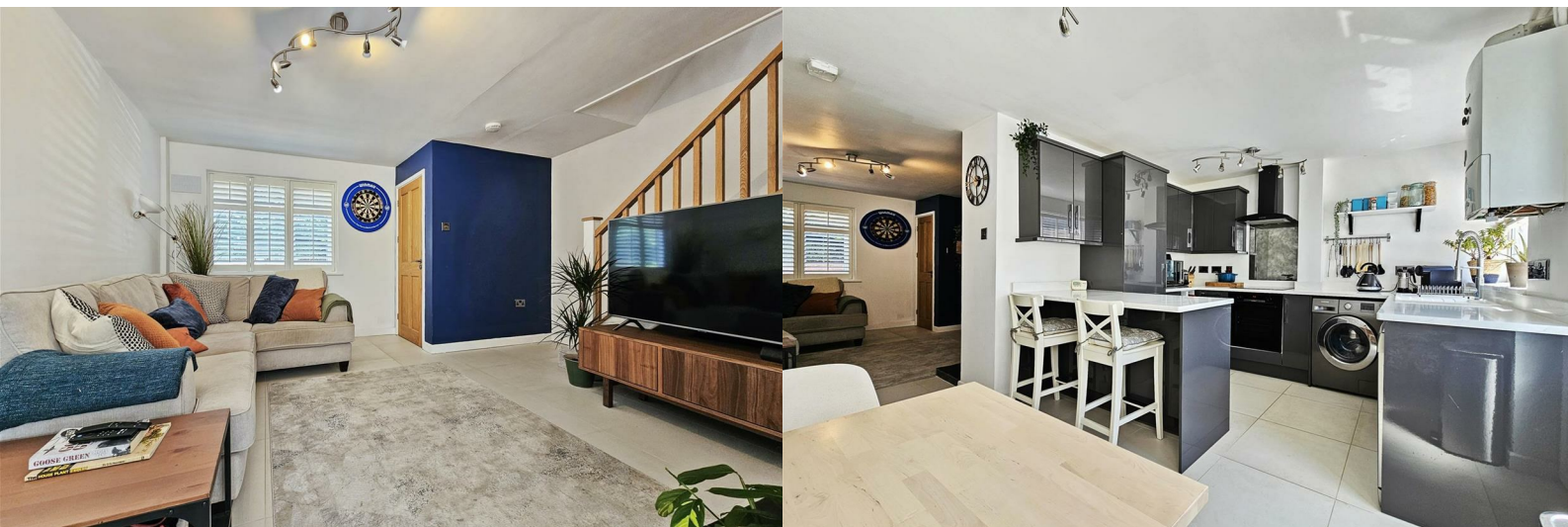
moving made personal



57D Main Street

Lowdham, Nottingham, NG14 7BD

Asking price £259,950



57D Main Street, Lowdham, Nottingham NG14 7BD

Asking price £259,950

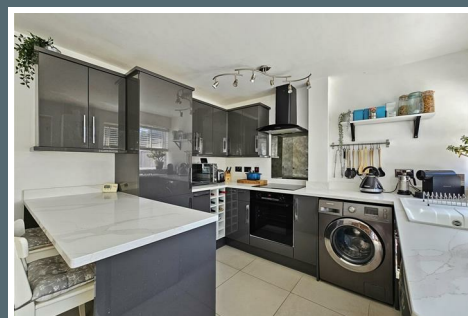
THREE BEDROOMS IN THE CENTRE OF LOWDHAM!

Welcome to this charming terraced house located on Main Street in the heart of Lowdham. This property boasts one reception room, three bedrooms and a bathroom, making it an ideal home for a small family or individuals looking for a cozy space to call their own.

This home lies at the heart of this extremely popular village with its many amenities being quite literally, on your doorstep. These local services include shops, schools, recreational facilities and regular public transport services including bus and rail, making this location both convenient and desirable.

Lowdham is known for its friendly community and picturesque surroundings, providing a peaceful retreat while still being within easy reach of Nottingham's vibrant city life.

This property presents an excellent opportunity for anyone looking to settle in a lovely area with a strong sense of community. Whether you are a first-time buyer or seeking a family home, this house on Main Street is sure to impress. Don't miss the chance to make it your own.



PORCH

Entrance door to property and door through to hall.

HALL

Storage cupboard and door to lounge.

LOUNGE

14'5" x 15'3" (4.40 x 4.66)

UPVC double glazed window to front with shutters, a central heating radiator, log burner and stairs to first floor.

KITCHEN/DINER

14'5" x 10'1" (4.40 x 3.08)

A variety of wall and base units, sink with mixer tap and drainer, integrated fridge/freezer, built-in

oven, induction hob and extractor fan, space for washing machine and dishwasher, a central heating radiator and two UPVC double glazed windows to rear.

LANDING

Doors through to bedroom 1, 2, 3 and bathroom.

BEDROOM 1

8'1" x 8'8" (2.48 x 2.66)

A central heating radiator and UPVC double glazed window to front with shutters.

BEDROOM 2

8'6" x 10'1" (2.61 x 3.08)

A central heating radiator and UPVC double glazed window to rear.

BEDROOM 3

5'9" x 10'4" (1.76 x 3.17)

A central heating radiator and UPVC double glazed window to front with shutters.

BATHROOM

Enclosed toilet system WC, wash hand basin with mixer tap, bath with mixer tap and hand-held and waterfall shower over, variety of storage cupboards, heated towel rail and UPVC double glazed obscure window to rear.

FRONT

Pebbled front garden with gated access to pathway to entrance door.

REAR

Made up of paved patio areas and decking areas providing various seating areas and gated access to storage area behind house.









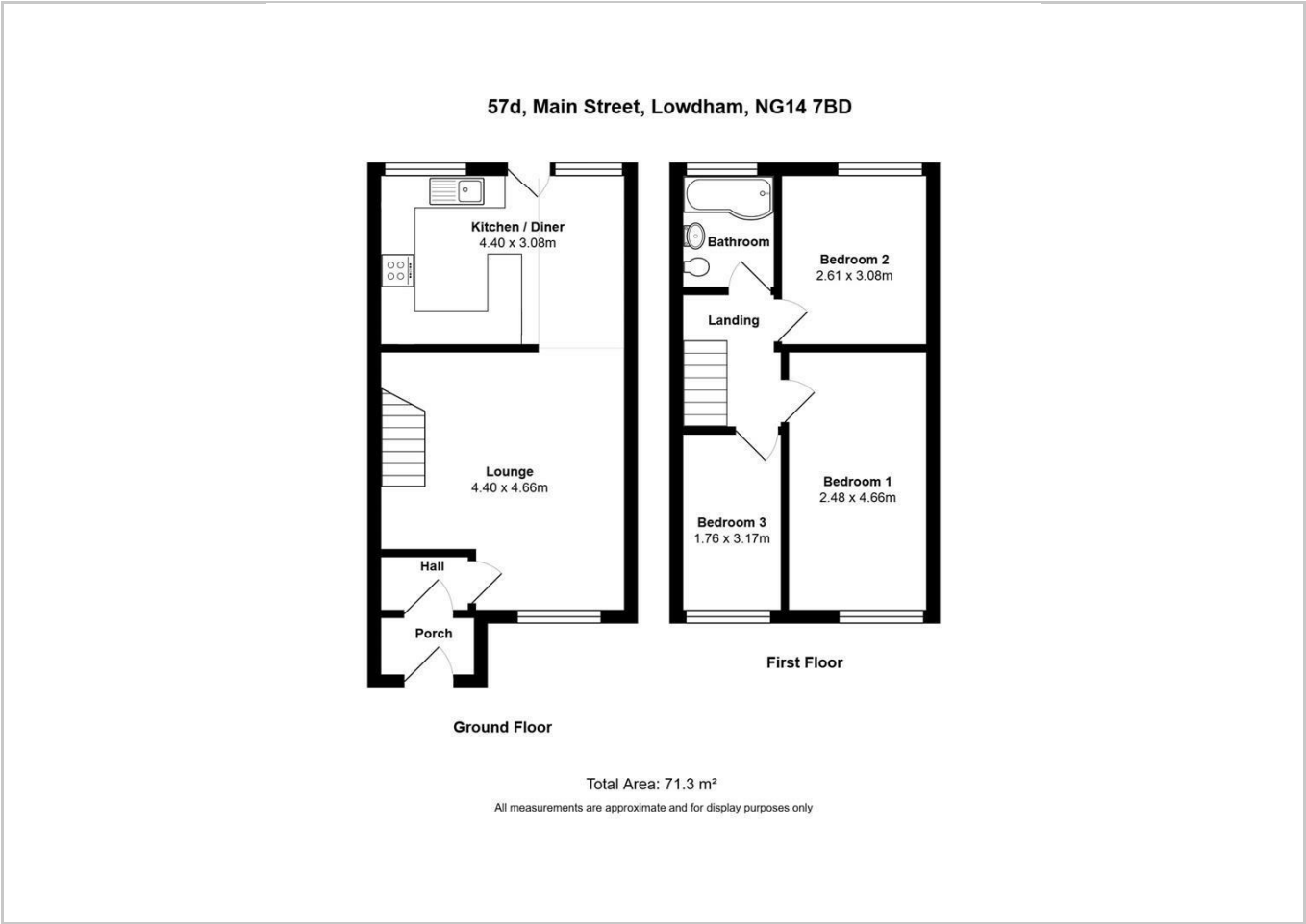
Road Map



Hybrid Map



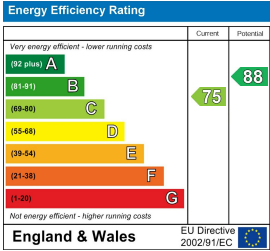
Terrain Map



Viewing

Please contact our Emma Terry Homes Office on 0115 966 57 41 if you wish to arrange a viewing appointment for this property or require further information.

Energy Efficiency Graph



These particulars, whilst believed to be accurate are set out as a general outline only for guidance and do not constitute any part of an offer or contract. Intending purchasers should not rely on them as statements of representation of fact, but must satisfy themselves by inspection or otherwise as to their accuracy. No person in this firms employment has the authority to make or give any representation or warranty in respect of the property.