

Emma Terry Homes

moving made personal



1a Brookside

Lowdham, Nottingham, NG14 7AD

Asking price £350,000



1a Brookside, Lowdham, Nottingham NG14 7AD

Asking price £350,000

This delightful detached bungalow on Brookside, Lowdham offers plenty of opportunities.

The property consists of a WC, lounge, kitchen, utility room, dining room, master suite, two other bedrooms and a family bathroom. Additionally, the property boasts a detached double garage, providing ample space for vehicles or extra storage, which is a rare find in many homes.

One of the standout features of this home is its stunning garden, which provides a beautiful outdoor space for relaxation and entertaining. The beautifully landscaped area is perfect for gardening or simply enjoying the fresh air on a sunny day.

In summary, this property in Brookside is a wonderful opportunity for anyone looking to settle in a welcoming community, with the added benefit of a stunning garden. Don't miss the chance to make this lovely bungalow your new home.



HALLWAY

Entrance door to property, central heating radiator and doors through to WC, kitchen, lounge, bedroom 1, 2, 3 and bathroom

WC

UPVC double glazed obscure window to front, a central heating radiator, low level flush WC and wash hand basin.

LIVING ROOM

13'8" x 16'4" (4.17m x 5.00m)

UPVC double glazed sliding doors to rear, a central heating radiator, a feature gas fire and door through to dining room.

KITCHEN

A variety of wall and base units, 1 1/2 bowl sink with mixer tap and drainer, dishwasher, fridge/freezer, gas cooker with an eye level grill, UPVC double glazed window to front and doors through to utility and dining room.

UTILITY ROOM

Sink with hot and cold tap, washing machine & dryer, a central heating radiator, UPVC double glazed obscure window to side and door to side.

DINING ROOM

11'5" x 12'8" (3.48m x 3.87m)

A central heating radiator, a UPVC double glazed window to rear and a door through to lounge.

BEDROOM ONE

10'10" x 11'0" (3.32m x 3.36m)

A central heating radiator, fitted wardrobes, UPVC double glazed window to rear and door to ensuite.

ENSUITE

A shower cubicle with electric shower, low level flush WC, wash hand basin, a heated towel rail and UPVC double glazed obscure window to side.

BEDROOM 2

9'5" x 13'0" (2.88m x 3.98m)

A central heating radiator and UPVC double glazed window to front.

BEDROOM 3

9'4" x 8'3" (2.87m x 2.52m)

A central heating radiator, fitted wardrobes and UPVC double glazed window to front.

BATHROOM

Bath with hot and cold tap and shower over bath, low level flush WC, bidet, wash hand basin, a heated towel rail, a central heating radiator and UPVC double glazed obscure window to front.

FRONT

Huge gated pebbled driveway, double garage with obscure windows to side and power, gated access to side and outside tap to side.

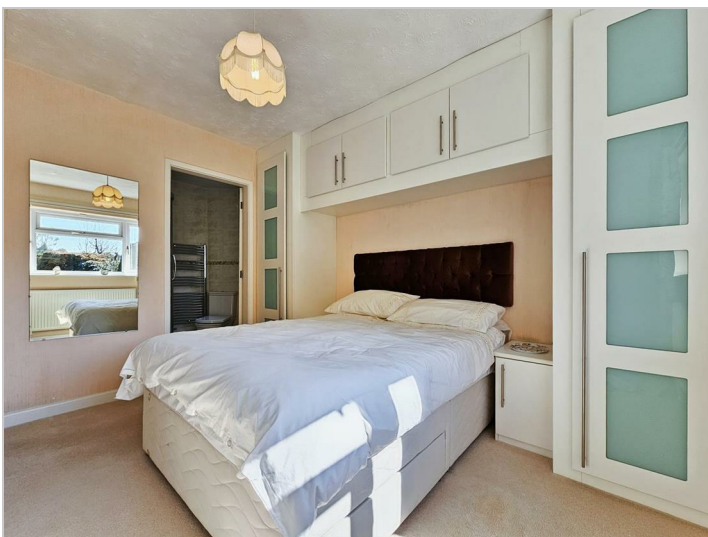
DOUBLE GARAGE

15'5" x 15'1" (4.70m x 4.60m)

REAR

Patio area around the perimeter of the property, lawn area with a variety of landscaped flowers, shrubs, trees and bushes.









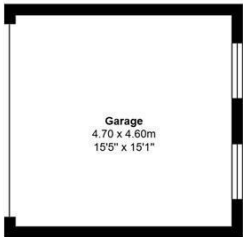
Road Map



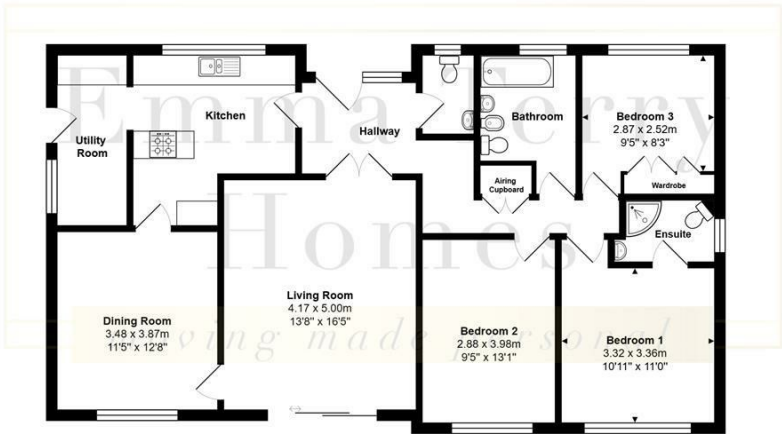
Hybrid Map



Terrain Map



1a, Brookside, Lowdham, NG14 7AD

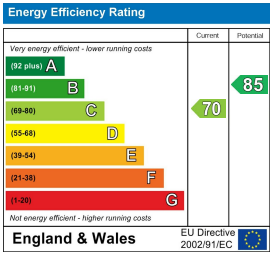


All measurements are approximate and for display purposes only

Viewing

Please contact our Emma Terry Homes Office on 0115 966 57 41 if you wish to arrange a viewing appointment for this property or require further information.

Energy Efficiency Graph



These particulars, whilst believed to be accurate are set out as a general outline only for guidance and do not constitute any part of an offer or contract. Intending purchasers should not rely on them as statements of representation of fact, but must satisfy themselves by inspection or otherwise as to their accuracy. No person in this firms employment has the authority to make or give any representation or warranty in respect of the property.