

Emma Terry Homes

moving made personal



26 Walton Avenue

Nottingham, NG3 2BS

Guide price £170,000 - £180,000



26 Walton Avenue, Nottingham NG3 2BS

**** £170,000 - £180,000 ****

Nestled on Walton Avenue in the vibrant city of Nottingham, this beautifully kept end-of-terrace house offers a delightful blend of modern living and classic charm. With two well-proportioned bedrooms, this property is perfect for small families, couples, or individuals.

Upon entering, you are welcomed into a spacious reception room that exudes warmth and character, providing an ideal space for relaxation or entertaining guests. The recently renovated kitchen boasts contemporary fixtures and fittings, making it a joy to cook and gather with loved ones. The bathroom has also been tastefully updated, ensuring a fresh and inviting atmosphere.

The gated driveway provides both security and convenience for off-street parking. The outdoor space is perfect for enjoying the fresh air, whether it be for a morning coffee or an evening gathering.

This home is not only beautifully presented but also benefits from its end-of-terrace position, offering additional privacy and a sense of space. Located in a desirable area of Nottingham, you will find yourself within easy reach of local amenities, schools, and transport links, making it an ideal choice for those looking to enjoy the best of city living.



HALL

Entrance door, stairs to first floor and door through to living room.

LIVING ROOM

13'5" x 11'7" (4.10 x 3.54)

UPVC double glazed window to front elevation, built in storage cupboards, doors through to entrance hall and kitchen and a central heating radiator.

KITCHEN

A variety of base storage units, built in sink

and drainer, integrated fridge, integrated freezer, two UPVC double glazed windows to rear, built in induction hob and oven, store cupboard and door through to rear garden.

LANDING

UPVC double glazed window to side elevation and doors through to bedroom 2, 3 and bathroom.

BEDROOM 1

13'5" x 9'10" (4.10 x 3.02)

UPVC double glazed window to front, central

heating radiator and walk in storage cupboard.

BEDROOM 2

10'5" x 8'2" (3.19 x 2.51)

UPVC double glazed window to rear, central heating radiator, a variety of storage units and cupboard containing water tank.

BATHROOM

UPVC double glazed obscure window to rear, bath with mixer tap and electric shower, low level flush W.C with enclosed toilet system, wash hand basin and vanity unit and a central heating radiator.

REAR

Enclosed by fences, lawn area, Astro turf area, paved area and path and gated access to front.

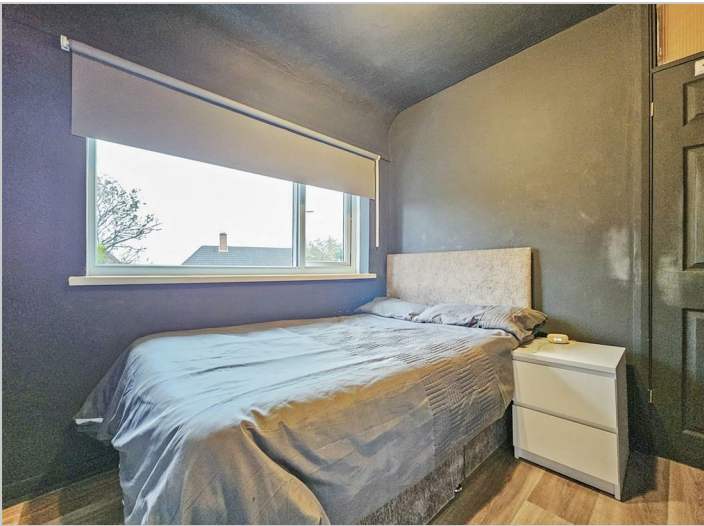
FRONT

Entrance door to side of house, paved and stones gated driveway, enclosed by a fence and gated access to front door and rear.









Road Map



Hybrid Map



Terrain Map



26, Walton Avenue, Nottingham, NG3 2BS

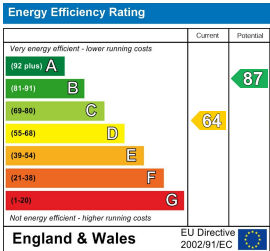


Ground Floor First Floor
All measurements are approximate and for display purposes only

Viewing

Please contact our Emma Terry Homes Office on 0115 966 57 41 if you wish to arrange a viewing appointment for this property or require further information.

Energy Efficiency Graph



These particulars, whilst believed to be accurate are set out as a general outline only for guidance and do not constitute any part of an offer or contract. Intending purchasers should not rely on them as statements of representation of fact, but must satisfy themselves by inspection or otherwise as to their accuracy. No person in this firm's employment has the authority to make or give any representation or warranty in respect of the property.