

**KILBURN
THREE
BEDROOM
HOME**

BLOOR HOMES



A three bedroom semi-detached home with spacious lounge and fantastic open plan kitchen / dining area featuring French doors leading to the garden. Upstairs the master bedroom benefits from an en suite shower room.

KILBURN

A BEAUTIFUL THREE BEDROOM
SEMI-DETACHED HOME

**KILBURN
THREE
BEDROOM
HOME**

FIRST FLOOR:

BEDROOM 1
3.10m x 3.38m
10'2" x 11'1"

EN SUITE

BEDROOM 2
2.57m x 2.94m
8'5" x 9'8"

BEDROOM 3
2.10m x 2.76m
6'11" x 9'1"

BATHROOM

GROUND FLOOR:

LOUNGE
3.75m x 4.75m
12'3" x 15'7"

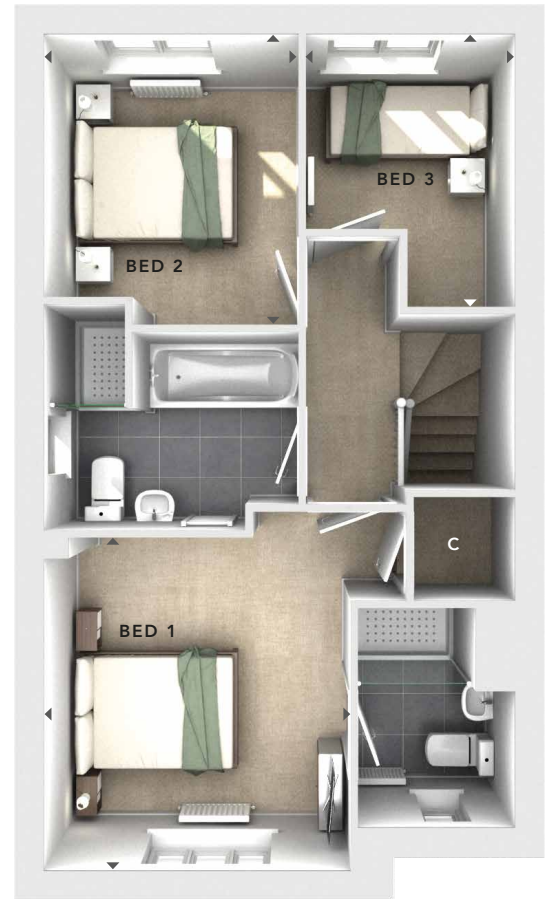
KITCHEN / DINING
3.63m x 3.69m
11'11" x 12'1"

UTILITY
1.05m x 1.70m
3'5" x 5'7"

CLOAKS



**GROUND
FLOOR**



**FIRST
FLOOR**

- C** - Storage
- △** - External Access
- ◀▶** - Measurement Points

© Bloor Homes • 386B 4.9

BLOOR HOMES

These particulars are intended as a preliminary guide for prospective purchasers and should not be relied upon. The elevational treatment for individual house types shows a typical arrangement. Details of materials and design treatments may vary. Any artist impressions shown are not intended to represent any particular plot. Purchasers are advised to inspect the layout plan to establish the arrangement of the house and surrounding property. Internal layouts show a general arrangement which may vary from plot to plot. Room sizes given are approx. overall finished room sizes and subject to normal building tolerances (i.e. ± 75mm). In all instances purchasers are advised to inspect plot specific information available from our sales team. Nothing in these particulars or verbal assurance shall form or constitute part of any contract, and are given without any responsibility on behalf of Bloor Homes.