



JASMINE HOUSE, SCOTTON, HG5

GUIDE PRICE £750,000



Stunning newly constructed detached village home with warranty.

Jasmine House is an impressive, detached stone-built property forming part of an exclusive development of just four properties by Ashfield Homes, a forward thinking, independent Yorkshire house builder that prides themselves on creating beautiful, quality homes that have been thoughtfully designed with energy efficiency in mind.

This newly constructed property, with aluminium double-glazed windows and French doors throughout, is finished to the highest standards with stylish accommodation extending to just shy of 2,000 sq ft. The fully underfloor heated ground floor offers contemporary living with a welcoming reception hall leading to a cosy snug overlooking the private front garden, spacious living room to the rear which is flooded with natural light via a full wall of glazing framing views of the enclosed back garden, adjacent dining kitchen with a range of sleek handleless cabinetry, quartz work surfaces, integrated appliances, and a central island unit with ample storage and seating - this excellent space also enjoys direct access to the west-facing rear garden.

Completing the excellent ground floor is a useful boot room/utility off the kitchen, guest w/c off the entrance hall, and an integral garage with electrically operated main door and a pedestrian door out to the gardens.



Tenure
Freehold

Local Authority
North Yorkshire Council

Council Tax Band
TBC

EPC Rating
B







Accommodation continued...

A bespoke oak and glazed staircase rises to the light and airy first floor galleried landing where there are two stunning bedroom suites. The principal bedroom is over 24 feet in length and benefits from a stylish fully tiled and underfloor heated en suite shower room. The second double bedroom with walk-in storage also has its own luxurious en suite with a shower over a bath and underfloor heating.

Outside

Jasmine House is set behind electrically operated timber gates which reveal a large, gravelled driveway and parking area for several vehicles. The generous fully enclosed plot offers large areas of lawn to the front, side and rear of the property. A west facing paved terrace spanning the full width of the rear of the house is the ideal space for entertaining and alfresco dining.

Location

Scotton is a popular village conveniently situated close to the historic market town of Knaresborough which is served with extensive shops, schools for all age groups and transport services including a railway station with main line links. The towns southern bypass is also convenient, and the A1/M link provides easy access to the commercial centres of north and west Yorkshire including Leeds, Bradford, Harrogate and York. Dales House is situated within a short walking distance of the excellent village pub - The Guy Fawkes Arms.



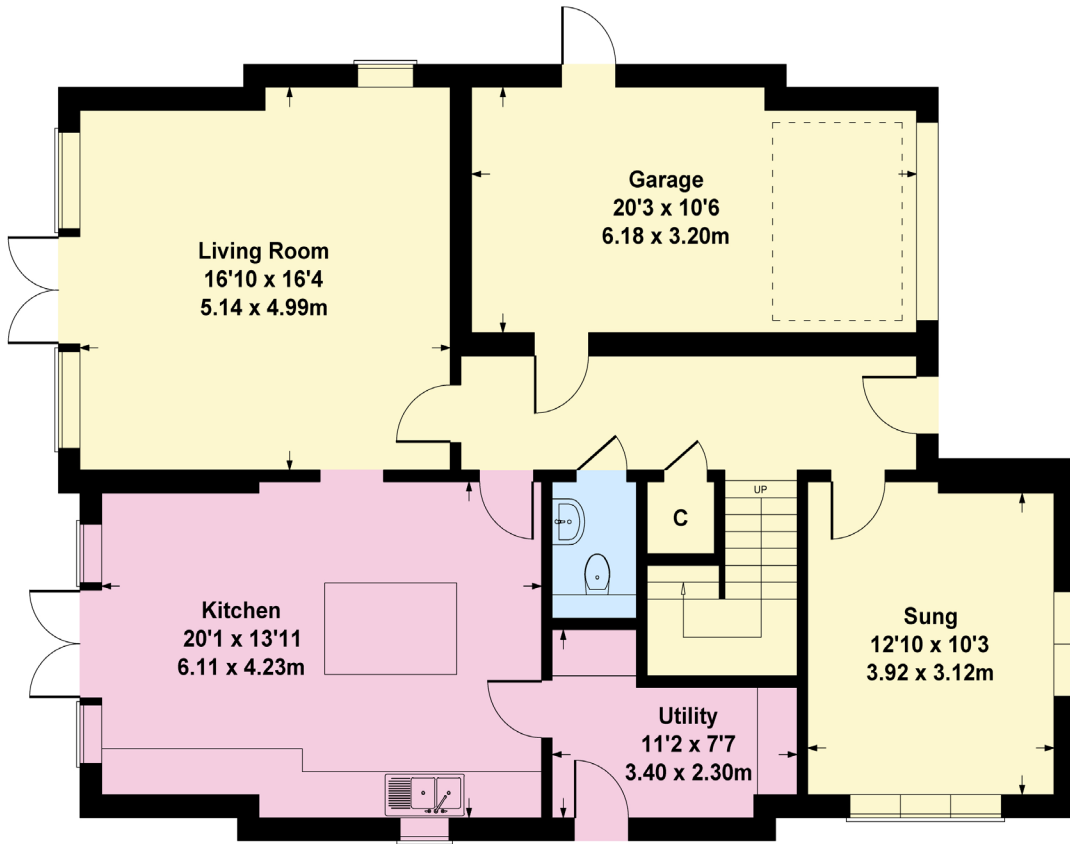
Services

We are advised that the property is connected to all mains services. An EV charge point is installed.

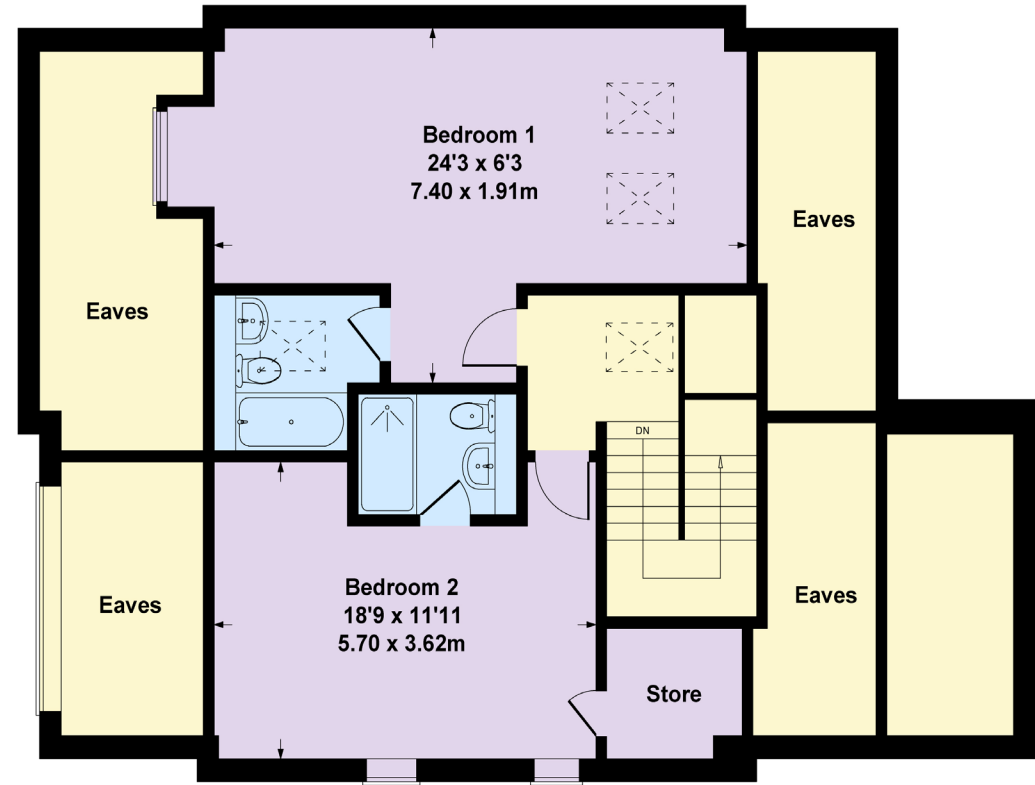
Directions - HG5 9HR

Proceed out of Knaresborough on the Ripley Road (B6165), take an eventual right turn onto New Lane heading towards the village of Scotton where Jasmine House can be found on the left hand side, identified by a North Residential sale board.





GROUND FLOOR



FIRST FLOOR

PLEASE CONTACT THE HARROGATE OFFICE - 01423 53 00 88 - 24 ALBERT STREET, HARROGATE HG1 1JT

Fixtures and fittings: A list of the fitted carpets, curtains, light fittings and other items fixed to the property which are included in the sale (or may be available by separate negotiation) will be provided by the Seller's Solicitors.

Important Notice: 1. Particulars: These particulars are not an offer or contract, nor part of one. You should not rely on statements by North Residential in the particulars or by word of mouth or in writing ("Information") as being factually accurate about the property, its condition or its value. Neither North Residential nor any joint agent has any authority to make any representations about the property, and accordingly any information given is entirely without responsibility on the part of the agents, seller(s) or lessor(s).

2. Photos, Videos etc: The photographs, property videos and virtual viewings etc. show only certain parts of the property as they appeared at the time they were taken. Areas, measurements and distances given are approximate only.

3. Regulations etc: Any reference to alterations to, or use of, any part of the property does not mean that any necessary planning, building regulations or other consent has been obtained. A buyer must find out by inspection or in other ways that these matters have been properly dealt with and that all information is correct. 4. VAT: The VAT position relating to the property may change without notice. 5. To find out how we process Personal Data, please refer to our Group Privacy Statement and other notices at www.northresidential.co.uk.

Particulars dated June 2024. Photographs and videos dated June 2024.

North Residential is the trading name of North Residential Estate Agents Limited, a company registered in England and Wales with registered number 11986429. Our registered office is at 24 Albert Street, Harrogate, North Yorkshire, HG1 1JT.





NORTH
RESIDENTIAL
FOR SALE
01423 530 088
northresidential.co.uk