



38 Greenfinch Avenue

Cottam, Preston, PR4 0PF

£210,000



Situated in a popular residential area of Cottam, this three-bedroom semi-detached home offers well-proportioned living space and a fantastic opportunity for a range of buyers. Set within a quiet and established development, the property enjoys a convenient location close to local schools, shops, and excellent transport links.

The ground floor features a spacious lounge and a separate kitchen, providing practical and comfortable living accommodation. Upstairs, there are three good-sized bedrooms and a family bathroom, making the home well-suited to families, first-time buyers, or those looking to invest in a strong rental area.

To the rear, the property enjoys a private garden space, ideal for outdoor seating or family use. On-street parking is available to the front of the property.

This is a well-located home with great potential, offered with no onward chain. Early viewing is recommended.



Ground floor

Entrance Hallway

Living Room 15'3" x 14'2" (4.65m x 4.34m)

Kitchen/Dining Room 15'3" x 8'11" (4.65m x 2.74m)

First Floor

Bedroom One 15'3" x 9'3" (4.65m x 2.82m)

Bedroom Two 11'3" x 8'5" (3.43m x 2.59m)

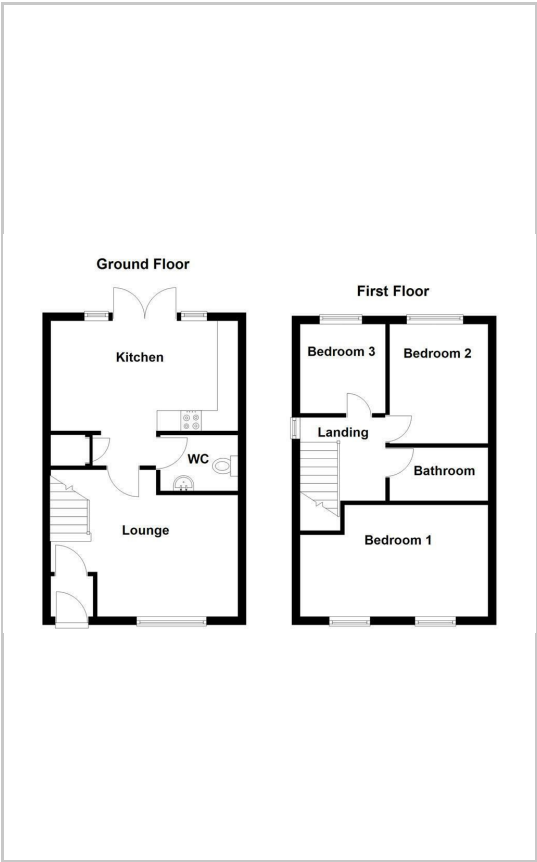
Bedroom Three 9'8" x 6'3" (2.97m x 1.91m)

Bathroom 8'2" x 5'6" (2.51m x 1.68m)

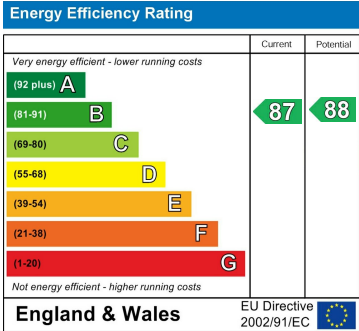
Area Map



Floor Plans



Energy Efficiency Graph



These particulars, whilst believed to be accurate are set out as a general outline only for guidance and do not constitute any part of an offer or contract. Intending purchasers should not rely on them as statements of representation of fact, but must satisfy themselves by inspection or otherwise as to their accuracy. No person in this firms employment has the authority to make or give any representation or warranty in respect of the property.