



## 69 Inkerman Street

Ashton-On-Ribble, Preston, PR2 2AQ

Offers Over £115,000

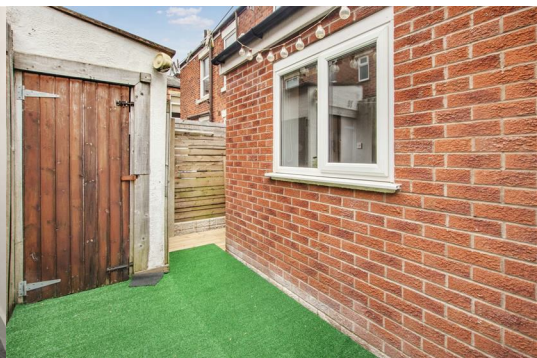


This well-presented 2-bedroom mid-terrace home is located in the heart of Ashton-On-Ribble, offering a stylish and comfortable living space ideal for first-time buyers, professionals, or investors.

The ground floor boasts a spacious open-plan kitchen and dining area, perfect for modern living and entertaining, complemented by a cosy lounge. Upstairs, you'll find two good-sized bedrooms and a contemporary bathroom finished to a high standard.

Outside, the property benefits from a private rear yard, ideal for low-maintenance outdoor space or storage.

Ready to move straight into, this home offers great value in a convenient and sought-after location.



Ground Floor

- Kitchen 13'4" x 7'8" (4.07m x 2.34m )
- Dining Room 8'10" x 6'3" (2.7m x 1.91m)
- Lounge 13'1" x 13'5" (4.01m x 4.09m )

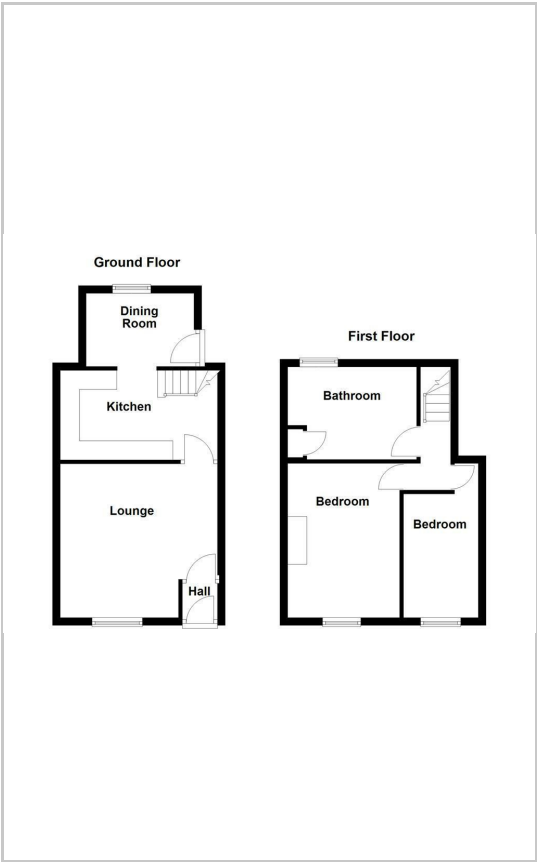
First Floor

- Bedroom One 10'5" x 7'11" (3.18m x 2.42m)
- Bedroom Two 13'2" x 9'6" (4.03m x 2.92m )
- Bathroom 11'3" x 6'4" (3.45m x 1.95m )

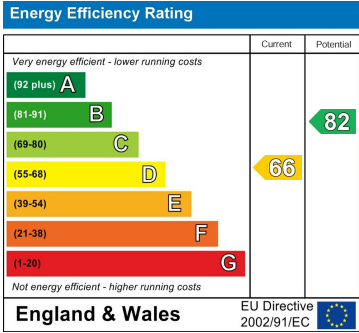
Area Map



Floor Plans



Energy Efficiency Graph



These particulars, whilst believed to be accurate are set out as a general outline only for guidance and do not constitute any part of an offer or contract. Intending purchasers should not rely on them as statements of representation of fact, but must satisfy themselves by inspection or otherwise as to their accuracy. No person in this firms employment has the authority to make or give any representation or warranty in respect of the property.