

GUILDHALL

SALES & LETTINGS



26 Hesketh Street

Ashton-On-Ribble, Preston, PR2 2RY

Offers Over £125,000



****TWO BEDROOMED MID-TERRACED PROPERTY WITH NO CHAIN DELAY****

Situated in the ever-popular area of Ashton-On-Ribble, this beautifully presented two-bedroom terraced property blends period charm with modern comfort. Perfect for first-time buyers, young professionals, or investors, the home offers a spacious and versatile layout ideal for contemporary living.

Upon entering through the traditional vestibule, you're welcomed into a bright and inviting living room, which flows effortlessly into a separate dining area — a perfect space for entertaining or relaxing. To the rear, a single-storey kitchen extension provides a well-equipped and functional space, with direct access to a private rear yard, ideal for enjoying a morning coffee or evening breeze.

An open-plan staircase leads to the first floor, where you'll find a generously sized master bedroom filled with natural light, a second well-proportioned bedroom, and a modern family bathroom. The layout is practical yet stylish, offering both comfort and convenience throughout.



Ground Floor

Reception Room 12'1" x 12'1" (3.7m x 3.7m)

Dining Room 12'1" x 8'10" (3.7m x 2.7m)

Kitchen 11'1" x 5'10" (3.4m x 1.8m)

First Floor

Bedroom One 12'1" x 11'1" (3.7m x 3.4m)

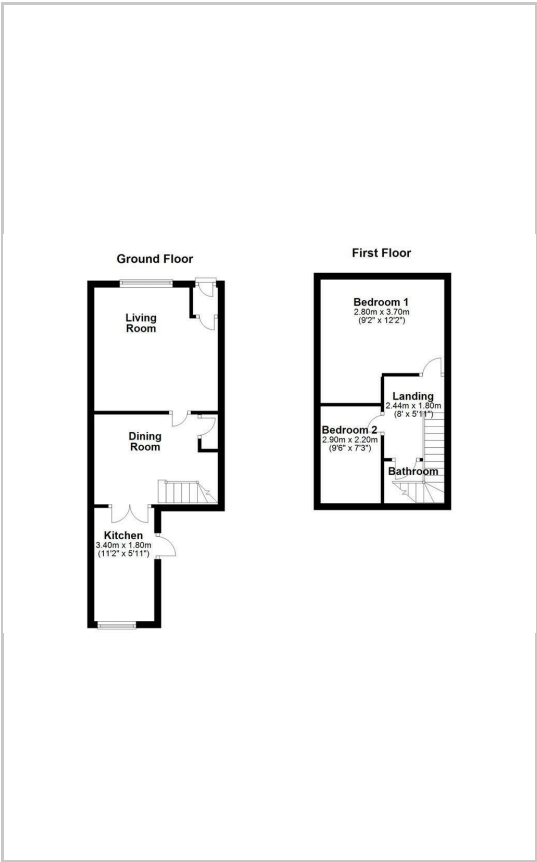
Bedroom Two 9'6" x 7'2" (2.9m x 2.2m)

Bathroom 7'6" x 5'10" (2.3m x 1.8m)

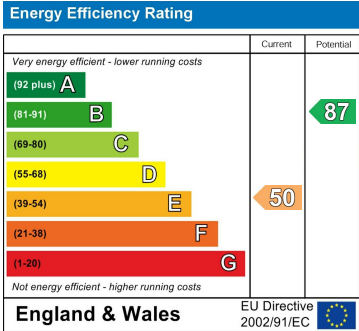
Area Map



Floor Plans



Energy Efficiency Graph



These particulars, whilst believed to be accurate are set out as a general outline only for guidance and do not constitute any part of an offer or contract. Intending purchasers should not rely on them as statements of representation of fact, but must satisfy themselves by inspection or otherwise as to their accuracy. No person in this firms employment has the authority to make or give any representation or warranty in respect of the property.