



31 Beech Grove

Ashton-On-Ribble, Preston, PR2 1DU

Offers Over £110,000



Welcome to Beech Grove, a charming two bedroom first floor apartment located in the sought after area of Ashton. Perfectly suited for investors, first time buyers or those looking to downsize, searching for a home that is ready to move into.

This beautifully maintained property features an entrance hallway with access to storage space and a wardrobe. Leading from here is access to the two bedrooms and the three piece shower room. This apartment also features a comfortable and inviting living room with access to the modern fitted kitchen.

Externally, the property includes a parking space and a garage for storage with communal gardens which are well maintained.



Hallway

Bedroom One 10'0" x 8'2" (3.06 x 2.51)

Bedroom Two 13'3" x 8'5" (4.06 x 2.57)

Shower Room

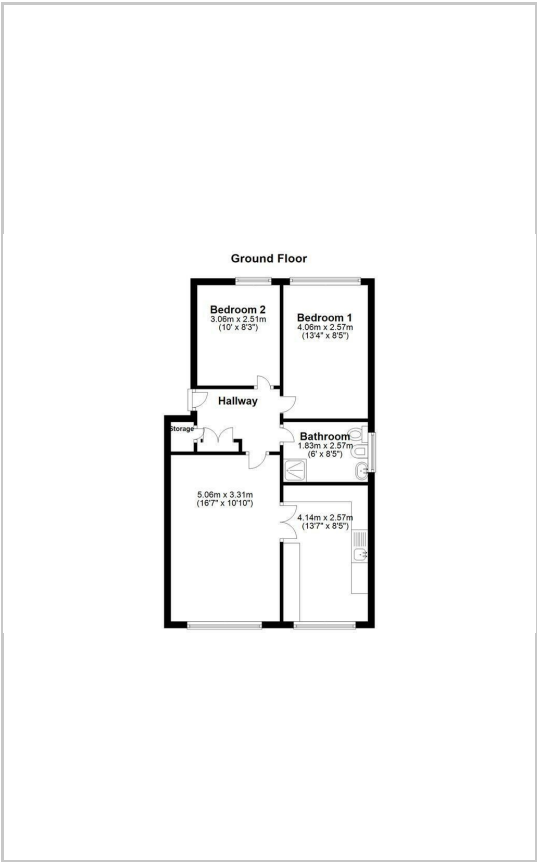
Kitchen 14'8" x 8'5" (4.48 x 2.57)

Lounge 16'7" x 10'10" (5.06 x 3.31)

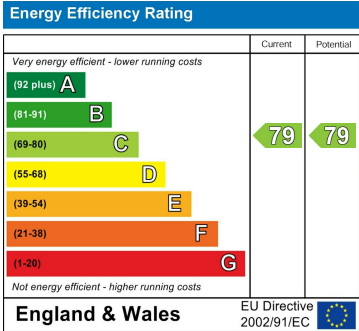
Area Map



Floor Plans



Energy Efficiency Graph



These particulars, whilst believed to be accurate are set out as a general outline only for guidance and do not constitute any part of an offer or contract. Intending purchasers should not rely on them as statements of representation of fact, but must satisfy themselves by inspection or otherwise as to their accuracy. No person in this firms employment has the authority to make or give any representation or warranty in respect of the property.