

GUILDHALL

SALES & LETTINGS



26 Bridge Road

Ashton-On-Ribble, Preston, PR2 2JU

Offers In The Region Of £170,000



Welcome to this spacious and well-maintained end-terrace property, located in the sought-after area of Ashton-On-Ribble. This home offers a fantastic opportunity for families or individuals looking for a property with room to grow.

Boasting three large double bedrooms across the first floor, this property offers generous space for a growing family or for those seeking extra room. The ground floor features two comfortable lounges, providing the perfect space for relaxation and entertaining guests. The kitchen, which has been extended to the rear, creates a bright and open area for cooking and dining, ideal for modern family living.

The attic is half-boarded and has electricity, making it a fantastic space suitable for use as a home office or for additional storage.

For outdoor enthusiasts, it's just a short walk to Haslam Park, providing a lovely green space for leisurely walks or outdoor activities.



Ground Floor

- Hallway 3'11" x 3'7" (1.2m x 1.1m)
- Reception Room One 12'1" x 11'1" (3.7m x 3.4m)
- Reception Room Two 14'5" x 12'1" (4.4m x 3.7m)
- Kitchen 8'2" x 8'2" (2.5m x 2.5m)

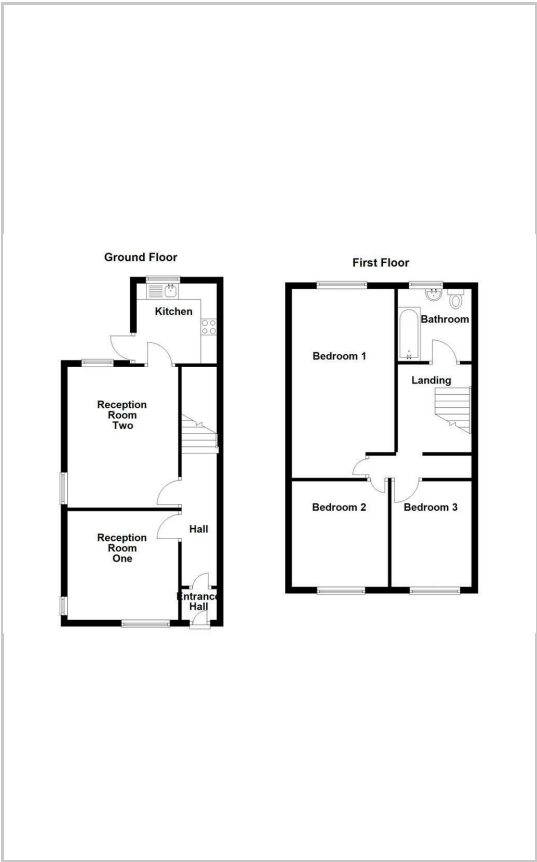
First Floor

- Bedroom One 19'4" x 10'5" (5.9m x 3.2m)
- Bedroom Two 10'9" x 9'10" (3.3m x 3m)
- Bedroom Three 10'9" x 6'6" (3.3m x 2.0m)
- Family Bathroom 8'6" x 7'6" (2.6m x 2.3m)

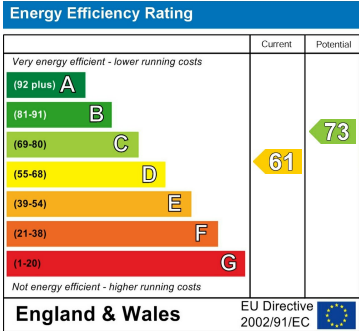
Area Map



Floor Plans



Energy Efficiency Graph



These particulars, whilst believed to be accurate are set out as a general outline only for guidance and do not constitute any part of an offer or contract. Intending purchasers should not rely on them as statements of representation of fact, but must satisfy themselves by inspection or otherwise as to their accuracy. No person in this firms employment has the authority to make or give any representation or warranty in respect of the property.