

# HADLEY HOMES



26 Myrtle Grove

Hoole, Chester, CH2 3EL

Asking price £265,000

Location Location Location! Are you looking for a family home situated within walking distance of every amenity you could possibly think of? If so this could be the property for you! Perfectly positioned on a quiet cul-de-sac the house is set back offering parking for two vehicles. A very rare find in Hoole, this home has a huge garden to the rear that boasts a completely private aspect and the property has been updated throughout to offer a ready move in finish.

- Fantastic location
- Large garden with private aspect
- Beautifully presented throughout
- Open plan living
- Modern kitchen with space for appliances
- Downstairs WC
- Three good sized bedrooms
- Newly fitted bathroom
- Walking distance to all local amenities
- Energy Performance Rating C

## Viewing

Please contact our Hadley Homes Office on 01244 445202 if you wish to arrange a viewing appointment for this property or require further information.



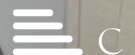
3



2

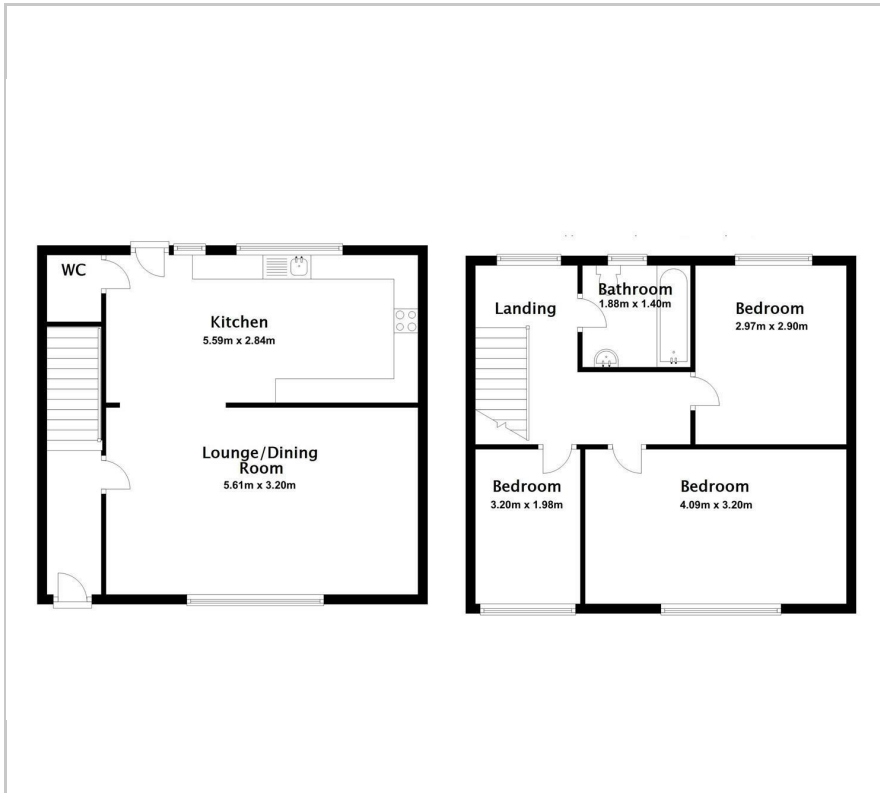


2

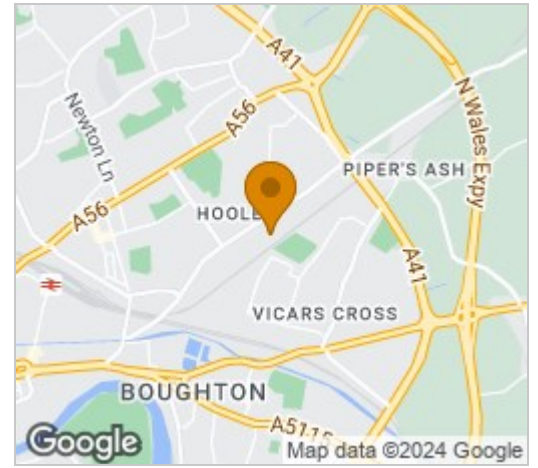


C

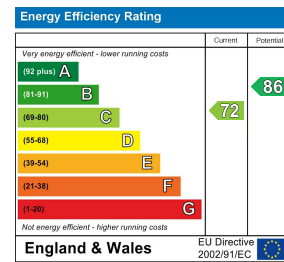
## Floor Plan



## Area Map



## Energy Efficiency Graph



These particulars, whilst believed to be accurate are set out as a general outline only for guidance and do not constitute any part of an offer or contract. Intending purchasers should not rely on them as statements of representation of fact, but must satisfy themselves by inspection or otherwise as to their accuracy. No person in this firm's employment has the authority to make or give any representation or warranty in respect of the property.

Registered Address: Hadley Homes, C/o 114 Northgate Street, Chester CH12HT

Tel: 01244 445202 | Email: sales@hadleyhomes.co.uk