

# HADLEY HOMES



## 3 Richmond Mews Hoole Lane

Hoole, Chester, CH2 3LZ

Asking price £275,000

A family home, located within walking distance of Chester city centre, offering a ready-to-move-in finish and benefiting from both a rear garden and allocated parking. The property boasts open-plan living space, modern fittings, and contemporary decor. Tucked away and forming part of a small development this property is perfect for any purchaser wanting an array of local amenities on their doorstep.

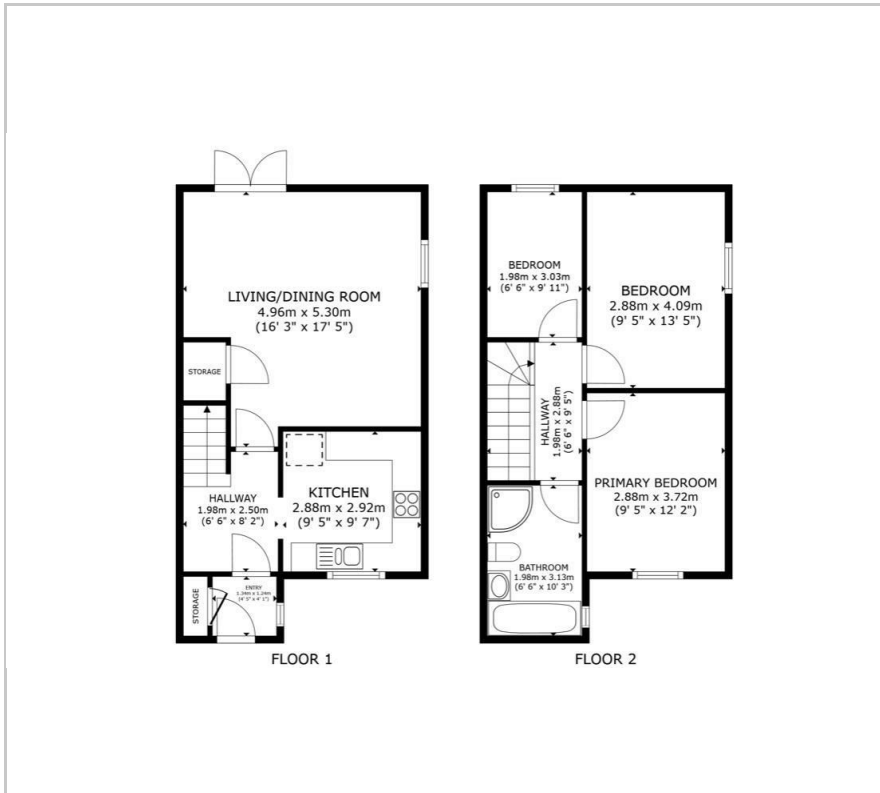
- Beautifully presented family home
- Quiet location
- Within walking distance of Chester City Centre
- Modern kitchen with space for appliances
- Open plan lounge/dining room
- Three generous sized bedrooms
- Bathroom fitted with a four piece suite
- Contemporary decor throughout
- No onward chain
- Energy Performance Certificate TBC

### Viewing

Please contact our Hadley Homes Office on 01244 445202 if you wish to arrange a viewing appointment for this property or require further information.



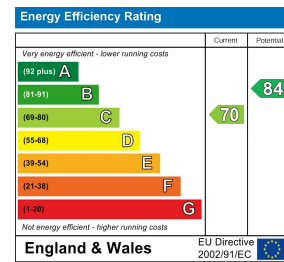
## Floor Plan



## Area Map



## Energy Efficiency Graph



These particulars, whilst believed to be accurate are set out as a general outline only for guidance and do not constitute any part of an offer or contract. Intending purchasers should not rely on them as statements of representation of fact, but must satisfy themselves by inspection or otherwise as to their accuracy. No person in this firm's employment has the authority to make or give any representation or warranty in respect of the property.

Registered Address: Hadley Homes, C/o 114 Northgate Street, Chester CH12HT

Tel: 01244 445202 | Email: sales@hadleyhomes.co.uk