

HADLEY HOMES



6 Bellard Drive

Hoole, Chester, CH2 3JP

Asking price £295,000

Are you looking for a family home that offers a fantastic open-plan living space complete with bi-fold doors? If so this will be the property for you! Perfectly positioned on a quiet road the house is set back offering parking for multiple vehicles. A very rare find in Hoole, this home has a good sized garden to the rear that boasts multiple outhouses that are great for storage. The property has been updated throughout to offer a ready move-in finish and the bathroom has been fitted with a luxurious suite.

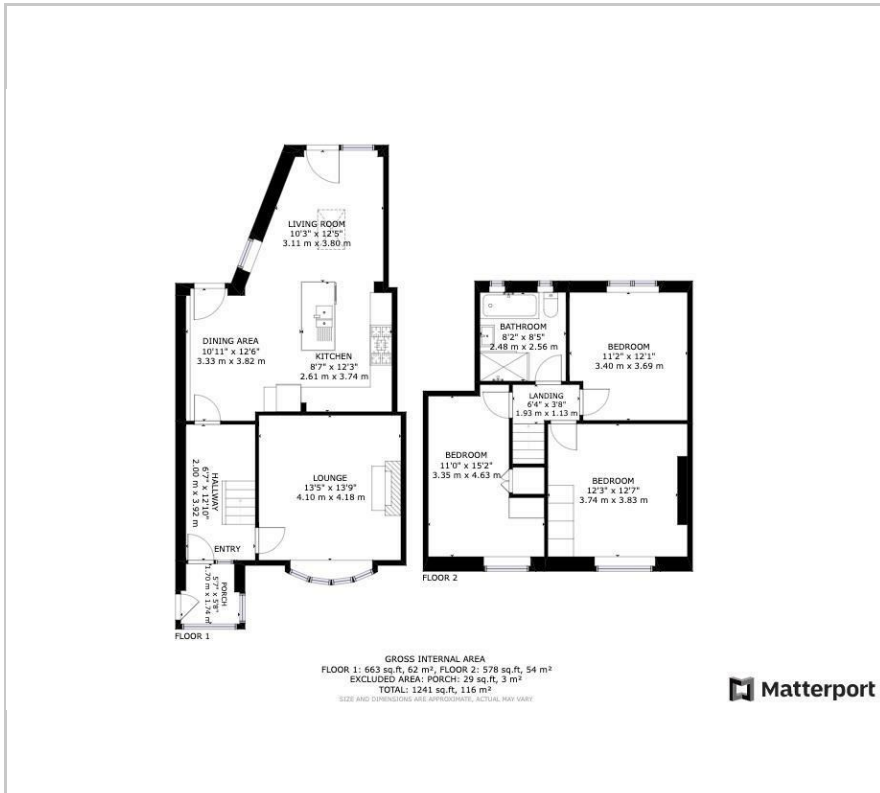
- Extended family home
- Open plan living space with bi-fold doors
- Fantastic location
- Lounge with log burner
- Three double bedrooms, two complete with fitted storage
- Modern bathroom fitted with a four-piece suite
- Large garden with paved patio seating area
- Multiple outhouses for storage
- Off road parking to the front of the property
- Energy Performance Rating C

Viewing

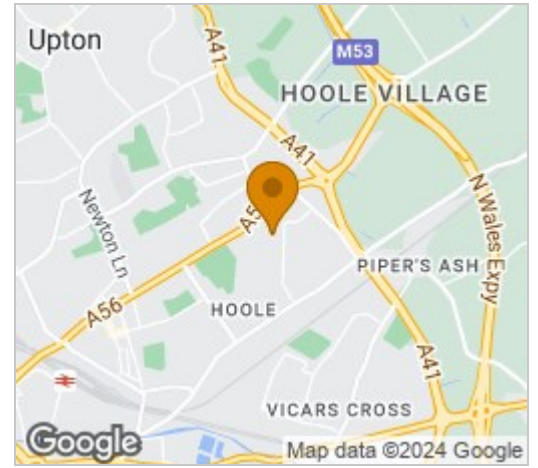
Please contact our Hadley Homes Office on 01244 445202 if you wish to arrange a viewing appointment for this property or require further information.



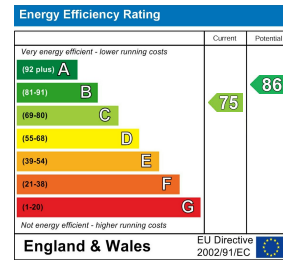
Floor Plan



Area Map



Energy Efficiency Graph



These particulars, whilst believed to be accurate are set out as a general outline only for guidance and do not constitute any part of an offer or contract. Intending purchasers should not rely on them as statements of representation of fact, but must satisfy themselves by inspection or otherwise as to their accuracy. No person in this firm's employment has the authority to make or give any representation or warranty in respect of the property.

Registered Address: Hadley Homes, C/o 114 Northgate Street, Chester CH12HT

Tel: 01244 445202 | Email: sales@hadleyhomes.co.uk