

HADLEY HOMES



25 Sydney Road

. Chester. CHI 4BN

Asking price £190,000

We have received an offer of £175,000.

Any increased offers are to be received within 5 days of this publication at the above agents.

Attention investors! A traditional terrace home currently being utilised as a house of multiple occupancy that is within walking distance of both the university and Chester City Centre. For any investor, this is an instant source of income with three double bedrooms and a single bedroom on offer along with on-street parking and a rear courtyard. The rear courtyard benefits from a fantastic view to the rear looking out onto the Shropshire Union Canal. There are a vast array of local amenities just a stone's throw away and the property boasts double glazing throughout and gas central heating.

Viewing

Please contact our Hadley Homes Office on 01244 445202 if you wish to arrange a viewing appointment for this property or require further information.

- Fantastic investment!
- Three tenanted bedrooms
- Recently re-fitted kitchen
- Open plan lounge/dining room
- Modern decor throughout
- Canal view to the rear
- On street parking
- No chain
- Bathroom fitted with a white suite
- Energy Performance Rating D



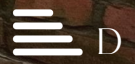
4



1

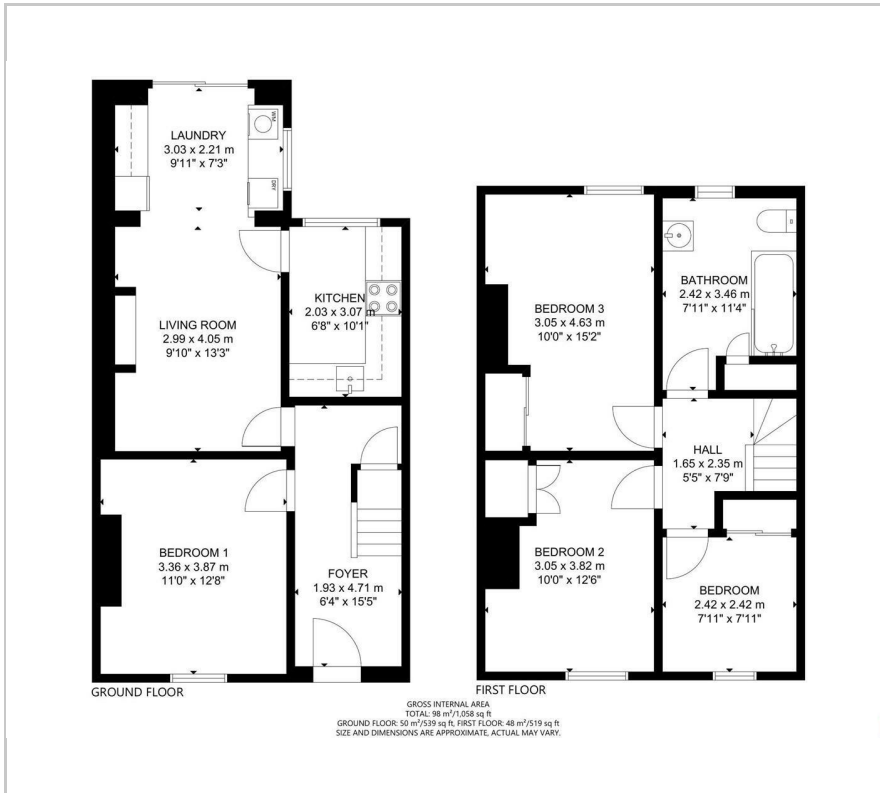


2

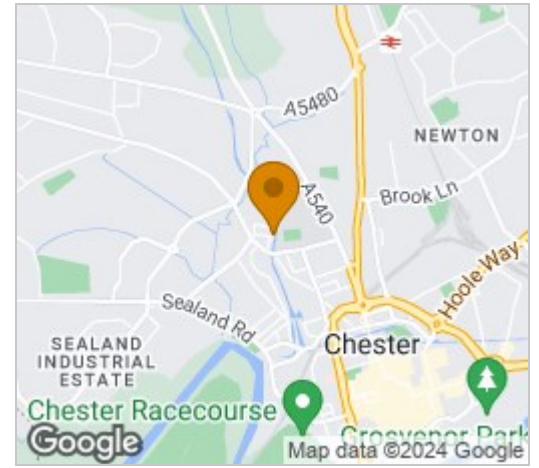


D

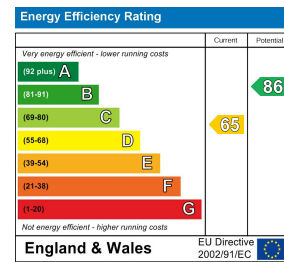
Floor Plan



Area Map



Energy Efficiency Graph



These particulars, whilst believed to be accurate are set out as a general outline only for guidance and do not constitute any part of an offer or contract. Intending purchasers should not rely on them as statements of representation of fact, but must satisfy themselves by inspection or otherwise as to their accuracy. No person in this firm's employment has the authority to make or give any representation or warranty in respect of the property.

Registered Address: Hadley Homes, C/o 114 Northgate Street, Chester CH12HT

Tel: 01244 445202 | Email: sales@hadleyhomes.co.uk