

To Let 3 bed flat



- › Three Bedrooms
- › Portered Block
- › Lift
- › Three Bathrooms
- › Furnished/Unfurnished

BrownRok are delighted to market this stunning three bedroom, three bathroom apartment situated in this portered block in St Johns Wood. Boydell Court is ideally located for the local transport and shopping facilities of the area





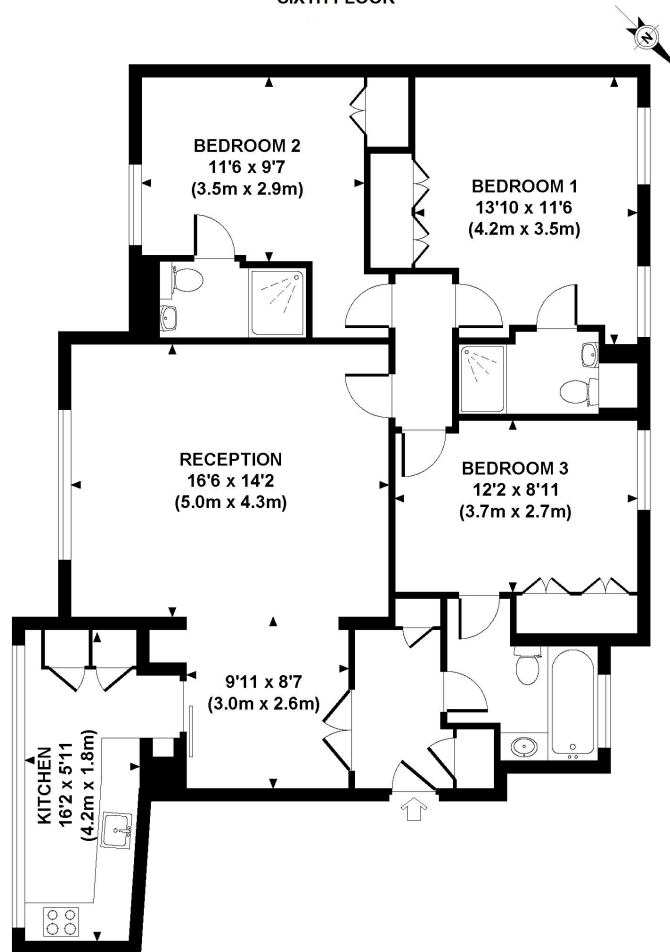
Silverstream House 45 Fitzroy Street, London W1T 6EB

[info@brownrok.com](mailto:info@brownrok.com)

02036336560



46 BOYDELL COURT  
SIXTH FLOOR



APPROXIMATE GROSS INTERNAL AREA 1062 SQ FT / 99 SQ M

Although every attempt has been made to ensure accuracy, all measurements are approximate.  
The floor plan's for illustrative purposes only and not to scale. Measured in accordance to RICS standards.  
DE-PHOTOGRAPHY.NET



Silverstream House 45 Fitzroy Street, London W1T 6EB

info@brownrok.com

02036336560

best  
agent

---

BrownRok are delighted to market this stunning three bedroom, three bathroom apartment situated in this portered block in St Johns Wood. Boydell Court is ideally located for the local transport and shopping facilities of the area



Silverstream House 45 Fitzroy Street, London W1T 6EB

[info@brownrok.com](mailto:info@brownrok.com)

02036336560

best  
agent