



High Ridge | Walsall | WS9 0DS

£230,000

 **Webbs**
estate agents

Summary

** NO UPWARD CHAIN ** SEMI DETACHED DORMER BUNGALOW ** DESIRABLE LOCATION CLOSE TO ALDRIDGE ** CLOSE TO AMENITIES AND SHOPS ** DECEPTIVELY SPACIOUS ** GROUND FLOOR BEDROOM ** TWO GOOD SIZED FIRST FLOOR BEDROOMS ** BATHROOM ** MAIN LIVING ROOM ** KITCHEN ** PRIVATE GARDENS AND PARKING TO THE FRONT ** DOUBLE GLAZING ** GAS CENTRAL HEATING ** EARLY VIEWING ADVISED **

Webbs Estate Agents have pleasure in offering this semi detached dormer bungalow, situated in a desirable and convenient location, being close to all local amenities and shops. Briefly comprising : Storm porch, reception hall, living room, bedroom, kitchen, a ground floor bathroom and two good sized first floor double bedrooms. Externally there is a private rear garden, front garden laid to lawn and parking. For a viewing please call our Aldridge branch on 01922 288800.

Key Features

- NO UPWARD CHAIN
- GROUND FLOOR BEDROOM
- LIVING ROOM
- UTILITY ROOM
- GARDENS
- SEMI DETACHED DORMER BUNGALOW
- BATHROOM
- KITCHEN
- 2 FIRST FLOOR BEDROOMS
- EARLY VIEWING ESSENTIAL

Rooms and Dimensions

STORM PORCH

HALLWAY

LIVING ROOM

14'11" x 10'1" (4.55 x 3.08)

KITCHEN

5'6" x 9'3" (1.68 x 2.84)

UTILITY ROOM

8'8" x 5'10" (2.66 x 1.78)

BEDROOM

11'10" x 10'0" (3.61 x 3.06)

BATHROOM

5'6" x 9'3" (1.68 x 2.84)

FIRST FLOOR LANDING

BEDROOM

12'4" x 10'2" (3.76 x 3.12)

BEDROOM

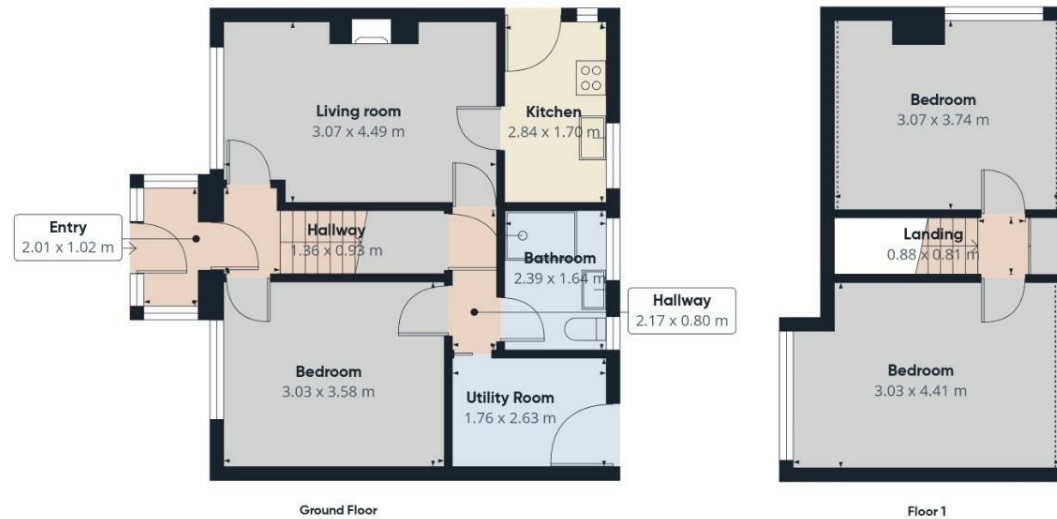
10'0" x 14'6" (3.06 x 4.43)

OUTSIDE

Identification Checks







Approximate total area⁽¹⁾
70.7 m²

Reduced headroom
0.5 m²

(1) Excluding balconies and terraces.

Reduced headroom
Below 1.5 m

Calculations reference the RICS IPMS
3C standard. Measurements are
approximate and not to scale. This
floor plan is intended for illustration
only.

GIRAFFE360

Webbs Estate Agents - endeavour to maintain accurate depictions of properties in Virtual Tours, Floor Plans and descriptions, however, these are intended only as a guide and purchasers must satisfy themselves by personal inspection.

