



Webbs

helping people move since 1994

Brook Lane | Walsall Wood | WS9 9NA

Offers In The Region Of £315,000

 **Webbs**
estate agents

Summary

**** NEW BUILD PROPERTY ** IMMACULATLY PRESENTED DEVELOPMENT OF 3/4/ 5 BEDROOM HOMES ** IN WALSALL WOOD ** QUIET LOCATION ** THREE STOREY HOME ** TWO FIRST FLOOR BEDROOMS WITH FAMILY BATHROOM ** MASTER ON SECOND FLOOR WITH EN SUITE ** SPACIOUS MAIN LIVING / DINING ROOM ** FITTED KITCHEN ** GUEST WC ** PARKING TO THE FRONT ** PRIVATE REAR GARDEN ** AIR SOURCE HEAT PUMP HEATING ** CALL TO ARRANGE A VIEWING APPOINTMENT ****

Webbs Estate Agents are pleased to present to you this NEW DEVELOPMENT of a mixture of 3/4 and 5 bedroom homes located in a quite street close to Walsall Wood offering close connections to shops, amenities , schools and transport links. In brief this home offers: Entrance hall, guest WC, kitchen, spacious main living and dining room. On the first floor there are two good sized bedrooms, modern bathroom and on the second floor the master with en suite. Externally this property has a driveway to the front and private and an enclosed rear garden. Call today on 01922 288800 to arrange your viewing appointment.

Key Features

- NEW BUILD PROPERTY
- 3 BEDROOMS, MASTER WITH EN SUITE
- GUEST CLOAKS
- FAMILY BATHROOM
- HEAT SOURCE PUMP HEATING
- 3 STOREY HOME
- FITTED KITCHEN
- OPEN PLAN LOUNGE / DINER
- PARKING & GARDENS
- CALL WEBBS TO ARRANGE AN APPOINTMENT

Rooms and Dimensions

Agents Note C

THROUGH ENTRANCE HALL

KITCHEN

11'5" x 8'2" (3.5 x 2.5)

LOUNGE AREA

14'1" x 15'1" (4.3 x 4.6)

DINING AREA

9'10" x 8'6" (3 x 2.6)

GUEST WC

FIRST FLOOR LANDING

BEDROOM TWO

13'1" x 7'10" (4 x 2.4)

BEDROOM THREE

14'9" x 11'9" (4.5 x 3.6)

SECOND FLOOR LANDING

MASTER BEDROOM

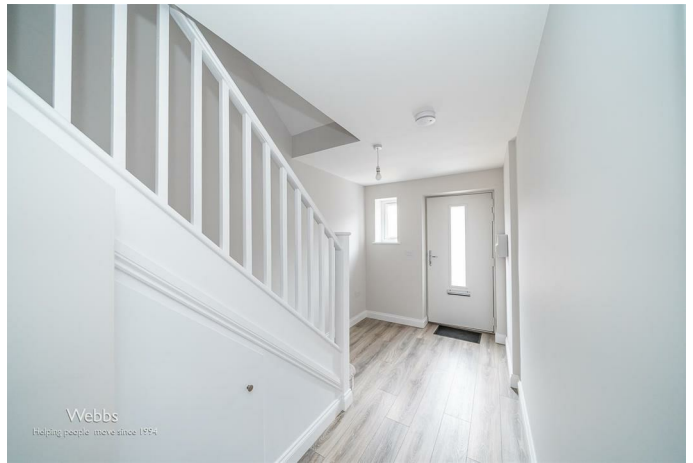
12'5" x 7'10" (3.8 x 2.4)

EN SUITE

OUTSIDE

Identification Checks





Webbs Estate Agents - endeavour to maintain accurate depictions of properties in Virtual Tours, Floor Plans and descriptions, however, these are intended only as a guide and purchasers must satisfy themselves by personal inspection.

