



Webbs

Helping people move since 1994

Berryfields | Walsall | WS9 0EE

£360,000

 Webbs
estate agents

Summary

**** VERY WELL PRESENTED & MAINTAINED ** TRADITIONAL DETACHED HOME ** THREE BEDROOMS ** OPEN PLAN LIVING / DINING ROOM ** KITCHEN ** UTILITY ROOM ** WC ** CONSERVATORY ** PORCH AND ENTRANCE HALL ** FAMILY BATHROOM ** GARAGE AND DRIVEWAY ** POTENTIAL TO EXTEND STPP ** SUPERB LOCATION ** CALL NOW FOR EARLY VIEWING ****

Webbs Estate Agents are delighted to offer for sale this family home in a very popular residential area, this beautifully maintained three-bedroom detached house offers spacious and versatile living. The ground floor features a bright and welcoming hallway, lounge / dining room, conservatory, kitchen, a utility room & WC. Upstairs, there are three bedrooms and a family bathroom. There is a private enclosed rear garden offering both a lawn and paved patio area. The property also benefits from a garage unit and driveway parking. This superbly presented home combines comfort, charm, and convenience in a highly desirable location. Call Webbs to secure your viewing today!!!!

Key Features

- DETACHED FAMILY HOME
- GREAT LOCATION
- LOUNGE / DINER
- CONSERVATORY
- GARAGE AND PARKING
- WELL MAINTAINED
- 3 BEDROOMS
- KITCHEN, UTILITY
- GUEST CLOAKS
- EARLY VIEWING ADVISED

Rooms and Dimensions

PORCH

THROUGH HALLWAY

LIVING / DINING ROOM

11'5" x 22'5" (3.49 x 6.85)

CONSERVATORY

9'11" x 11'10" (3.04 x 3.63)

KITCHEN

9'11" x 10'9" (3.03 x 3.29)

WC

5'2" x 2'8" (1.58 x 0.83)

UTILITY ROOM

3'9" x 16'9" (1.16 x 5.12)

BEDROOM ONE

10'5" x 12'2" (3.18 x 3.71)

BEDROOM TWO

11'11" x 9'8" (3.65 x 2.95)

BEDROOM THREE

9'1" x 6'10" (2.78 x 2.09)

FAMILY BATHROOM

7'10" x 6'10" (2.40 x 2.10)

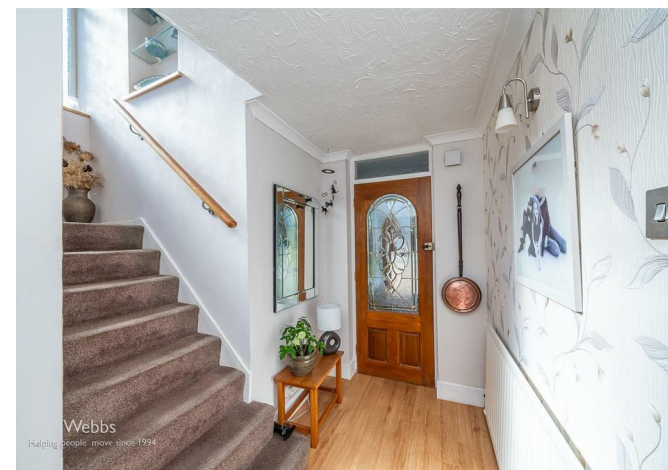
SEPARATE WC

GARAGE

9'8" x 15'10" (2.95 x 4.84)

OUTSIDE

Identification Checks





Webbs Estate Agents - endeavour to maintain accurate depictions of properties in Virtual Tours, Floor Plans and descriptions, however, these are intended only as a guide and purchasers must satisfy themselves by personal inspection.

