



**Broadway | Walsall | WS1 3HB**

**Offers In The Region Of £365,000**

 **Webbs**  
estate agents



# Summary

\*\* EXTENDED FAMILY HOME \*\* THREE BEDROOMS \*\* GROUND FLOOR WET ROOM \*\* 3 RECEPTION ROOMS \*\* LOUNGE & DINING ROOM \*\* KITCHEN \*\* UTILITY ROOM \*\* FAMILY BATHROOM \*\* REAR GARDENS \*\* PRIVATE DRIVEWAY \*\* NEW ROOF \*\* DEAL FOR LOCAL AMENITIES \*\* EARLY VIEWING ADVISED \*\*

WEBBS ESTATE AGENTS are pleased to offer for sale an extended home situated on the very popular Broadway ideal for all local amenities, school catchments and transport links, and has ample parking. In brief, consists of an entrance porch, through hallway, spacious lounge, sitting room, kitchen, dining room, wet room, utility room and games/bedroom. On the first floor, there are three bedrooms and a family bathroom, externally this property has a driveway parking and an enclosed rear garden. For a viewing contact our Aldridge branch on 01922 288800.

# Key Features

- EXTENDED 3 BEDROOM SEMI DETACHED
- 3 FIRST FLOOR BEDROOMS
- KITCHEN & DINING ROOM
- GROUND FLOOR WETROOM
- AMPLE PARKING, REAR GARDEN
- NEW ROOF
- 3 RECEPTION ROOMS
- UTILITY ROOM
- FAMILY BATHROOM
- EARLY VIEWING ESSENTIAL

# Rooms and Dimensions

## Entrance Porch

## Hallway

9'0" x 13'2" (2.764 x 4.022)

## Wetroom

5869'5" x 456'0" (1789 x 139)

## Living Room

11'10" x 13'8" inc bay (3.6176 x 4.19 inc bay)

## Sitting Room

11968'6" x 11'10" (3648 x 3.629)

## Kitchen

12'3" x 11'10" (3.745 x 3.61)

## Dining Room

7'3" x 17'3" (2.214 x 5.27)

## Utility Room

6'9" x 14'5" (2.08 x 4.396)

## Sitting Room / Bedroom

7'3" x 14'0" (2.216 x 4.29)

## First Floor Landing

## Bedroom One

11'11" x 11'10" (3.648 x 3.63)

## Bedroom Two

11'11" x 11'11" (3.64 x 3.633)

## Bedroom Three

12'4" x 11'10" (3.77 x 3.61)

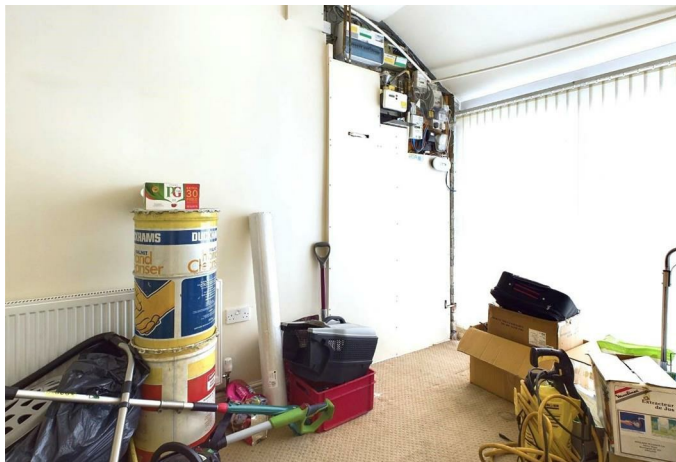
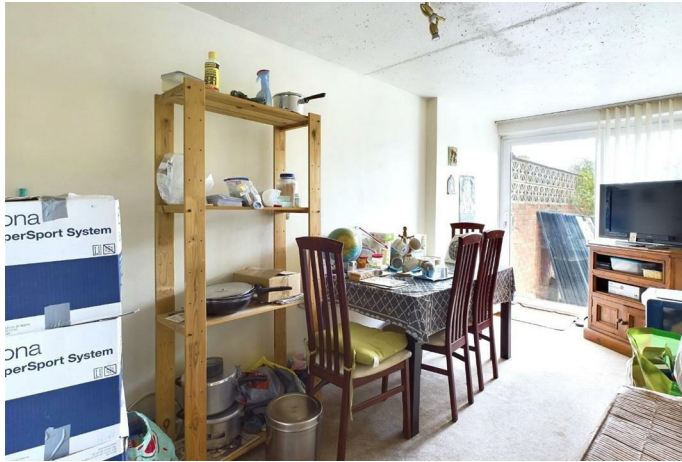
## Family Bathroom

9'1" x 7'5" (2.77 x 2.278)

## Identification Checks

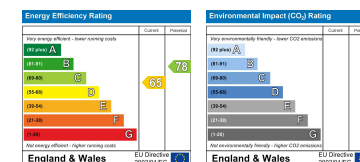








Webbs Estate Agents - endeavour to maintain accurate depictions of properties in Virtual Tours, Floor Plans and descriptions, however, these are intended only as a guide and purchasers must satisfy themselves by personal inspection.



28 High Street, Aldridge, Walsall, WS9 8LZ

Tel: 01922 288800 | Email: [aldridge@webbestateagents.co.uk](mailto:aldridge@webbestateagents.co.uk) | [www.webbestateagents.co.uk](http://www.webbestateagents.co.uk)