



Westbrook Avenue | Walsall | WS9 0BU

Offers In Excess Of £210,000





## Summary

**\*\*TWO BEDROOM TERRACE HOME\*\* TWO RECEPTION ROOMS\*\* CONSERVATORY\*\* REFITTED KITCHEN\*\* GUEST WC AND UTILITY\*\* PORCH AND HALLWAY\*\*TWO DOUBLE BEDROOMS\*\* FITTED KITCHEN\*\* LARGE REAR GARDEN\*\* DRIVEWAY\*\* POPULAR LOCATION\*\* CLOSE TO ALL LOCAL AMENITIES\*\***

Webbs Estate Agents are pleased to bring to market this much improved two bedroom terrace family home, situated in a popular location close to all local amenities. In brief this home comprises of: Porch, entrance hall, lounge, conservatory, dining room, refitted kitchen, lobby and guest WC/ utility area.

On the first floor there are two double bedrooms and fitted bathroom.

To the front of the home is a driveway and to the rear is a private and enclosed landscaped rear garden,

Call Webbs to secure your viewing today!!

## Key Features

- TWO BEDROOM TERRACE HOME
- REFITTED KITCHEN
- CONSERVATORY TO THE REAR
- DRIVEWAY TO THE FRONT
- POPULAR LOCATION
- TWO RECEPTION ROOMS
- GUEST WC AND UTILITY
- LANDSCAPED REAR GARDEN
- PORCH AND HALL
- CALL WEBBS TO SECURE YOUR VIEWING

## Rooms and Dimensions

### Porch

### Entrance Hall

### Lounge

11'10m x 12'2 (3.61m x 3.71m)

### Consevatory

9'5" x 8'9" (2.87m" x 2.67m")

### Dining Room

11'9"m x 9'8" (3.58m"m x 2.95m")

### Kitchen

8'2" x 9'6" (2.49m" x 2.90m")

### Lobby

### Guest WC and Utility

5'5"m x 4'9" (1.65m"m x 1.45m")

### Bedroom One

12'2 x 9'10 (3.71m x 3.00m)

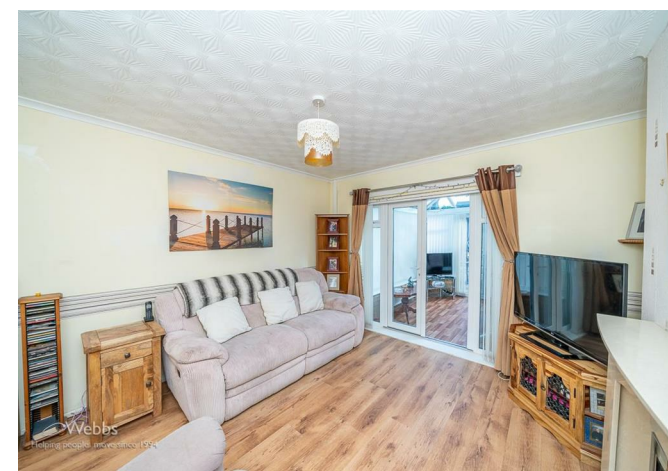
### Bedroom Two

15'0 x 8'10 (4.57m x 2.69m)

### Bathroom

5'8" x 9'8" (1.73m" x 2.95m")

### Identification Checks

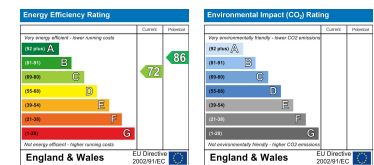








Webbs Estate Agents - endeavour to maintain accurate depictions of properties in Virtual Tours, Floor Plans and descriptions, however, these are intended only as a guide and purchasers must satisfy themselves by personal inspection.



28 High Street, Aldridge, Walsall, WS9 8LZ

Tel: 01922 288800 | Email: [aldridge@webbestateagents.co.uk](mailto:aldridge@webbestateagents.co.uk) | [www.webbestateagents.co.uk](http://www.webbestateagents.co.uk)

