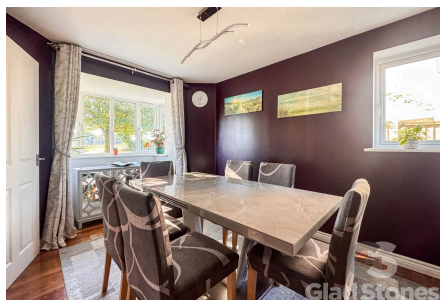


Lulworth Drive, Widewell, Plymouth, PL6 FANTASTIC FAMILY HOME

£370,000

🛏 4 🚿 3 🛋 3



Welcome to Widewell! Where you will fall in love with this luxurious, detached family home conveniently located on Lulworth Drive. Boasting three reception rooms, four double bedrooms, modern fitted kitchen, family bathroom and cloakroom, along with an enclosed rear garden, parking, and garage. Beautifully presented throughout, this is the perfect property for any growing family looking for a home in the North of the City.

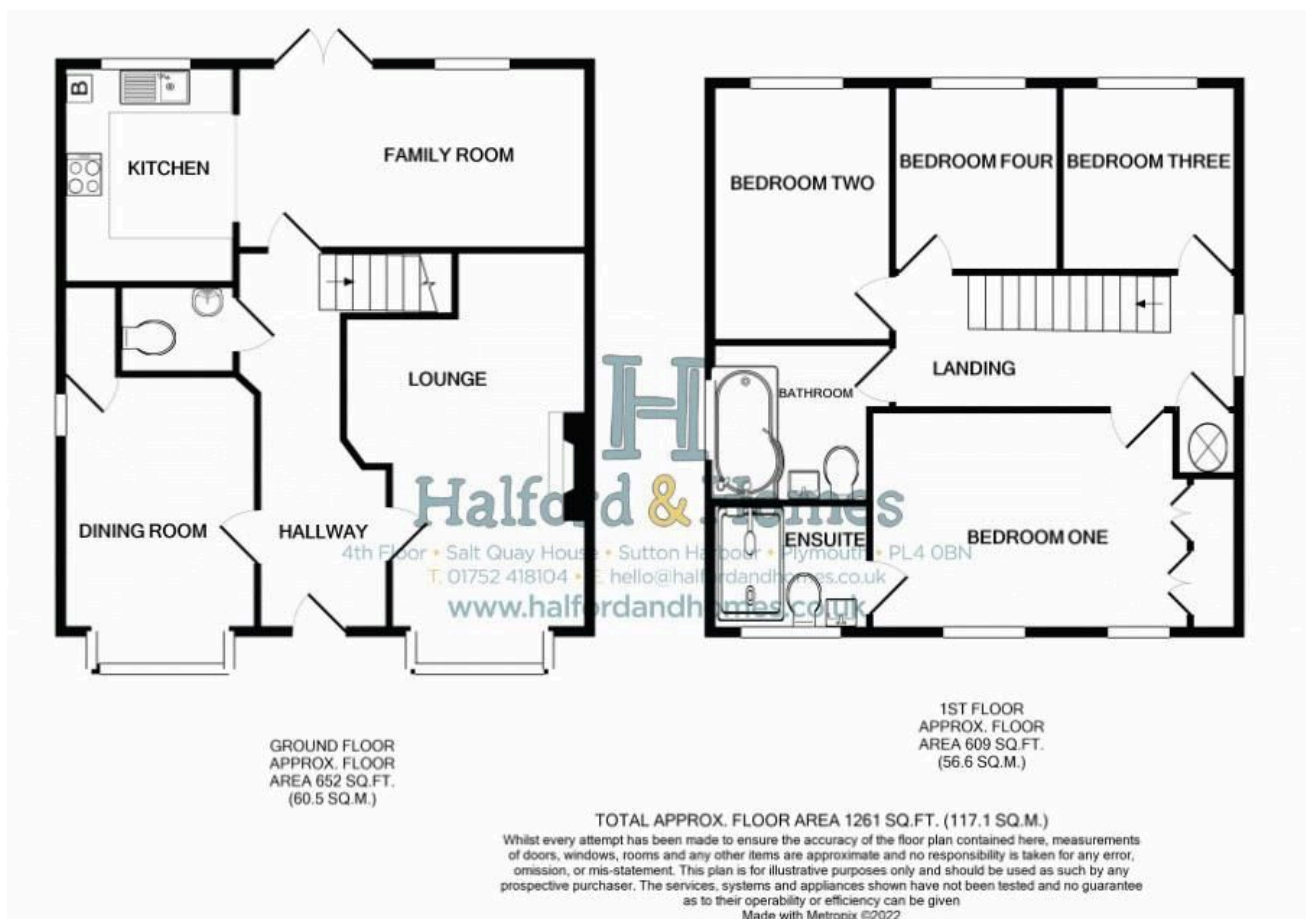
DISCLAIMER:

Whilst Glad Stones Estates strive to ensure the accuracy of all details displayed in the marketing of all properties, we must point out that information has been provided verbally by the current vendor and therefore any potential buyer must make their own investigations prior to committing to purchase the property. A conveyancer must be appointed to conduct legal investigations and the details provided in the marketing material does not form any part of the contract. Glad Stones Estates have not tested any equipment, fixtures, fittings or services within the property.



Key Features

- Spacious Detached Home in Widewell
- Four Bedrooms
- Garage & Parking
- Very Well Presented Throughout
- EPC Grade C Council Tax Band E
- Three Reception Rooms
- En-Suite, Family Bathroom & Cloakroom
- Highly Sought After Location
- Modern Fitted Kitchen
- Viewing Highly Recommended



DISCLAIMER:

Whilst Glad Stones Estates strive to ensure the accuracy of all details displayed in the marketing of all properties, we must point out that information has been provided verbally by the current vendor and therefore any potential buyer must make their own investigations prior to committing to purchase the property. A conveyancer must be appointed to conduct legal investigations and the details provided in the marketing material does not form any part of the contract. Glad Stones Estates have not tested any equipment, fixtures, fittings or services within the property.