

12 Merrivale Road, Honicknowle

£270,000

3 1 1



Glad stones estates are extremely excited to showcase this exceptional property. Offering flexible accommodation set on a substantial plot with endless possibilities. This property has so much to offer a growing family, or anyone looking to embrace nature, grow crops or relax in the peaceful surroundings of the garden listening to wildlife and the bustle of the olive trees whilst enjoying the westerly sunshine.

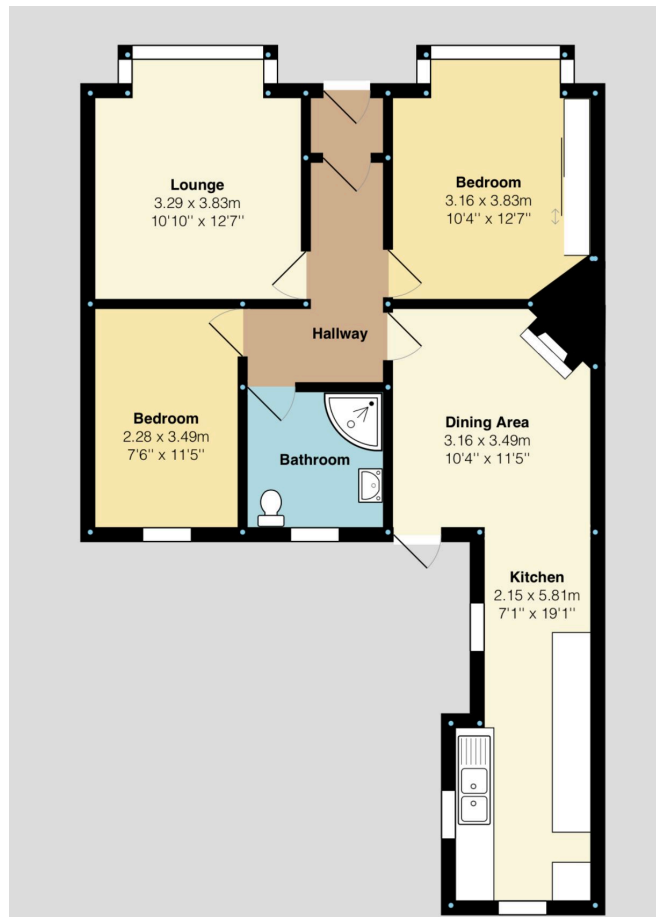
DISCLAIMER:

Whilst Glad Stones Estates strive to ensure the accuracy of all details displayed in the marketing of all properties, we must point out that information has been provided verbally by the current vendor and therefore any potential buyer must make their own investigations prior to committing to purchase the property. A conveyancer must be appointed to conduct legal investigations and the details provided in the marketing material does not form any part of the contract. Glad Stones Estates have not tested any equipment, fixtures, fittings or services within the property.



Key Features

- Semi-Detached Bungalow on Substantial Plot
- Driveway for Multiple Vehicles
- Large Westerly Facing Garden with Established Trees / Shrubs / Crops
- Cul-De-Sac Position
- Council Tax Band B EPC Grade D
- Flexible Accommodation
- Garage / Workshop / Outbuildings / Cellar
- Modern Fitted Kitchen
- Very Well Presented Throughout
- VIEWING HIGHLY RECOMMENDED



DISCLAIMER:

Whilst Glad Stones Estates strive to ensure the accuracy of all details displayed in the marketing of all properties, we must point out that information has been provided verbally by the current vendor and therefore any potential buyer must make their own investigations prior to committing to purchase the property. A conveyancer must be appointed to conduct legal investigations and the details provided in the marketing material does not form any part of the contract. Glad Stones Estates have not tested any equipment, fixtures, fittings or services within the property.